

FISHWATER — VIKING



Судостроитель: VIKING

Год постройки: 2000

Модель: Катер для спортивной рыбалки

Цена: ЦЕНА ЯХТЫ ПО ЗАПРОСУ

Местонахождение: United States

Длина общая: 47' 2" (14.38m)

Ширина: 15' 6" (4.72m)

Макс. осадка: 4' 5" (1.35m)

Крейс. скорость: 30 Kts. (35 MPH)

Макс. скорость: 33 Kts. (38 MPH)

Купить **Fishwater — VIKING** а также выбрать подходящую вам яхту из нашего каталога яхт вам поможет опытный яхтенный брокер Андрей Шестаков. На сегодняшний день компания **Shestakov Yacht Sales Inc.** имеет большое количество яхт в собственном списке продаж, а также тесно сотрудничает со всеми крупными яхтенными производителями по всему миру.

Для того чтобы купить яхту **Fishwater — VIKING** а также проконсультироваться по любому вопросу связанному с покупкой, продажей, чартером яхт позвоните по телефону **+7(918)465-66-44**.

ОГЛАВЛЕНИЕ

ОГЛАВЛЕНИЕ	2
ХАРАКТЕРИСТИКИ	4
Обзор	4
Основная информация	4
Размеры	4
Скорость, вместимость и масса	5
Размещение	5
Корпус и палуба	5
Информация о двигателе	5
ПОДРОБНОЕ ОПИСАНИЕ	6
Vessel Walkthrough	6
Notes	6
Galley/Laundry	6
Fishing Equipment	7
Engineer Room	7
Electrical Equipment	8
Fly Bridge and Deck	9
Electronics Package	9
Notable Upgrades	10
Исключения	11
Отказ от ответственности	11
ФОТОГРАФИИ	12
Starboard Profile	12
КОНТАКТЫ	16
Контактная информация	16
Телефоны	16
Время работы	16
Адрес	16

ХАРАКТЕРИСТИКИ

Обзор

Brand new to the market, "Fishwater" is an excellent example of the popular Viking 47' Convertible. She has been a well-known serious fishing contender in Virginia Beach for her entire life. She has been professionally maintained by Bluewater Yacht Sales (we are the dealer and sold her new), ACE Marine (MAN dealer with an office at our yard), and has always had a professional crew to keep her in top condition. She is powered with the MAN 800hp engines, and has a full tower which was added in 2003. Also in 2003, a custom helm pod and upgraded electronics package were added, as well as all new soft goods and countertops. The boat was completely painted from the waterline up in 2007, and the hullsides are an "ice blue". This boat is a real head-turner wherever she goes. The love and care that she has received is immediately evident from dockside as well as aboard. This is one of those special boats that has always been kept "right". The list of upgrades (see full specs) is extensive! No expense has been spared. She is beautiful to the eye, performs like no other 47' production boat, and has proven herself a fish-raiser. She must be seen by anyone looking for a quality sportfishing machine which lacks for nothing in the lower \$300K range.

Основная информация

Тип судна: Катер для спортивной рыбалки

Подкатегория: Катер для спортивной рыбалки

Модельный год: 2000

Год постройки: 2000

Страна: United States

Размеры

Длина общая: 47' 2" (14.38m)

Ширина: 15' 6" (4.72m)

Макс. осадка: 4' 5" (1.35m)

Скорость, вместимость и масса

Крейс. скорость: 30 Kts. (35 MPH)

Макс. скорость: 33 Kts. (38 MPH)

Водоизмещение: 46300 Pounds

Вместимость воды: 160 Gallons

Объем топливного бака: 700 Gallons

Размещение

Всего кают: 2

Всего ком. состава: 2

Корпус и палуба

Материал корпуса: Fiberglass

Информация о двигателе

Двигатели: 2

Производитель: MAN

Модель: 2848

Тип двигателя: Inboard

Тип топлива: Diesel

ПОДРОБНОЕ ОПИСАНИЕ

Vessel Walkthrough

"Fishwater" has the popular two-stateroom, two-head layout with galley up. The salon and galley are quite large and spacious, and all soft goods and carpeting are fresh and in very good condition. The galley is forward to port, opposite a beautiful teak dinette (custom sailfish inlay) and updated entertainment center with a Sony 46" flat-screen TV, KVH satellite TV system with two receivers, and a Sony stereo system. Aft to port is a large and comfortable L-shaped settee with storage beneath. Three steps down from the salon is the washer/dryer to port, and the guest stateroom is to starboard. The guest stateroom features wide over and under berths, large cedar-lined closet, drawer storage, and a private entrance into the day head. The day/guest head offers a full stall shower, vanity with storage, sink, and fresh-water Vacu-Flush head. The master stateroom is forward and features a centerline queen berth, cedar-lined hanging locker, drawer storage, custom rod storage, overhead hatch, JVC 13" TV with DVD player, and private ensuite head. The master head includes a large stall shower, vanity with storage, and fresh-water Vacu-Flush head system. All of the berths include a custom upgraded orthopedic mattress as well!

Notes

New bedspreads and shams in 2003

New salon carpeting in 2009

Two carpet runners for salon

Two SAT TV receivers (one for each TV)

Ultraleather settee and dinette in excellent condition

Galley/Laundry

Large galley located in the salon- forward to port.

Beautiful teak cabinetry

Corian countertops (new in 2003)

Amico teak and holly sole

Full-size upright Kenmore refrigerator and freezer

Ceran 2-burner electric stove

Sharp convection microwave over (new 2003)

Washer/dryer located in companionway

Dockside fresh water hook-up

Fishing Equipment

Bluewater tower (2003) with single-lever controls and electronics at tower station

Release Marine fighting chair with rocket launchers

4 clearing rodholders in flyridge haunch

Rupp outriggers (2003)

Large in-deck macerated fishbox with dividers

Eskimo ice maker (plumbed to fishbox)

Recessed electric teaser reels (2003)

3 built-in quartz lights

Bait freezer (new 2006)

Flush-mounted rod holders

Flybridge rocket launchers

Transom door

Raw and fresh water washdowns

Fresh water washdown on flybridge

Tackle storage and rigging station

Trolling valves

Engineer Room

Preferred MAN 2848 800hp engines with upgraded turbos, recent injectors and valves,

Sea strainers

Trolling valves

Fuel priming pumps

Delta-T airboxes (2006)

Y-valve "crash pumps" at raw water intakes

Macerated holding tank

ZF 350 transmissions (2.077:1)

Glendinning engine synchronizers

Glendinning single-lever controls

Hynautic hydraulic steering system

Oil changing system

Engine room fire suppression system

Three (3) bilge pumps

Emergency engine stop

Racor fuel filters

Blowers

Dripless shaft seals

Engine temperature alarm

Bennett dual-ram trim tabs

Raritan 20-gallon water heater

Cruise-air air conditioning system with revers-cycle heat and digital controls

Awlgripped bilges

Electrical Equipment

Onan 15KW diesel generator with soundshield

3 battery banks

Isolation transformer

Glendinning cable master

50amp/120/240 volt electrical system

Dual pole breaker for AC at main distribution panel

Sentry SM series 24 volt battery charger

Charles Marine 60 12 volt battery charger

Battery parallel switch at helm

Fly Bridge and Deck

2 Release Marine helm chairs

Fresh water washdown on bridge

Navigation lights

3-sided Strataglass enclosure with EZ2CY center panel

Custom helm station pod

Electric teaser reels

Overhead lights

Courtesy lights

Bench-style seating (2) with storage beneath

Fusion stereo w/speakers

Lewmar windlass with danforth anchor

Bow pulpit

Custom low-profile bow rail

Wide side-decks for easy bow access

Flybridge brow storage compartment

Electronics Package

FLYBRIDGE:

Northstar 957 chart plotter

Garmin GPS Map 740S chart plotter

Furuno FCV-292 bottom machine

Furuno 1942 60 mile radar

Furuno RD-30 speed/temp/depth

Robertson Simrad AP-22 autopilot

ICOM VHF (2 at flybridge, 1 in salon, and 1 on tower)

Rudder angle indicator

ACR spotlight

6" Ritchie compass

TOWER:

Furuno RD-30 speed/temp/depth

ICOM VHF

4" Ritchie compass

Notable Upgrades

This yacht has constantly been upgraded and maintained, including:

46" Sony flat screen TV

100 watt cockpit speakers

AC water pump replaced

Radar screen replaced

Bilge pumps replaced

Vacu-flush motor replaced

Engine cooling system overhauled

Icemaker compressor replaced

Countertops and soft good replaced

Injectors and valves

Drink box in cockpit

Two (2) Direct TV receivers

Исключения

При продаже яхты исключаются личные вещи владельца.

Отказ от ответственности

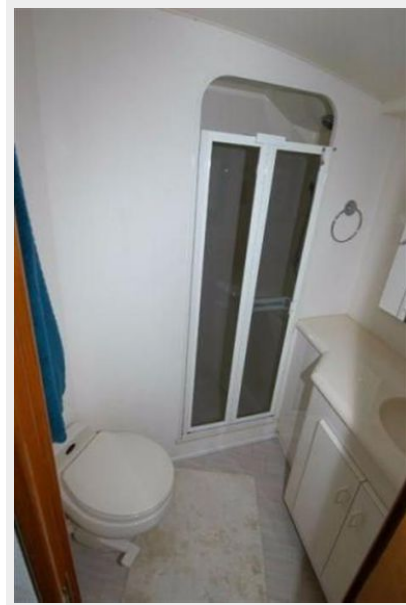
Компания предоставляет описание судна или яхты добросовестно, но не может гарантировать точность этой информации, а также не ручается за техническое состояние. Покупатель должен проинструктировать своих агентов или оценщиков исследовать представленную информацию более подробно, по собственному желанию. Продажа судна или яхты, изменение цены или снятие с продажи будет происходить без предварительного уведомления.

ФОТОГРАФИИ

Starboard Profile









КОНТАКТЫ

Андрей Шестаков (Andrey Shestakov) – ведущий яхтенный брокер отдела продаж яхт и судов компании Shestakov Yacht Sales Inc. Официальный представитель Shestakov Yacht Sales Inc. для русскоговорящих клиентов в центральном офисе компании в Майами/Форт Лодердейл/Флорида/США.

Контактная информация

Email: andrey@shestakovyachtsales.com

Web: shestakovyachtsales.com

Телефоны

Краснодарский край: **+7(918)465-66-44**

США, Майами, Флорида: **+1(954)274-4435**

Время работы

Понедельник – Суббота: **9:00 - 21:00**
EDT

Воскресенье: **Закрито**

Адрес



Harbour Towne Marina, 850 NE 3rd St,
STE 213, Dania, FL 33004