

ALGORythM — LAZZARA



Builder: LAZZARA

Year Built: 2012

Model: Flybridge

Price: PRICE ON APPLICATION

Location: United States

LOA: 92' 0" (28.04m)

Beam: 21' 1" (6.43m)

Max Draft: 4' 10" (1.47m)

Our experienced yacht broker, Andrey Shestakov, will help you choose and buy a yacht that best suits your needs **Algorythm — LAZZARA** from our catalogue. Presently, at Shestakov Yacht Sales Inc., we have a wide variety of yachts available on our sale's list. We also work in close contact with all the big yacht manufacturers from all over the world.

If you would like to buy a yacht **Algorythm — LAZZARA** or would like help answering any questions concerning purchasing, selling or chartering a yacht, please call **+1(954)274-4435**

TABLE OF CONTENTS

TABLE OF CONTENTS	2
SPECIFICATIONS	7
Overview	7
Basic Information	8
Dimensions	8
Speed, Capacities and Weight	8
Accommodations	8
Hull and Deck Information	9
Engine Information	9
DETAILED INFORMATION	10
Annual Service and Yard Maintenance July-August 2018	10
Interior Decor	10
Salon	11
Dayhead- Salon	11
Galley and Dinette	11
Master Stateroom	12
Master Balcony Room	12
Master Bathroom	13
Forward VIP Stateroom	13
Forward VIP Head	13
Port VIP Stateroom	14
Starboard VIP Stateroom	14
Port & Starboard VIP Head	14
2 Crew Staterooms	15
Crew Head	15
Laundry Room	15
AV & Entertainment	15
Mechanical	16

Electrical	18
Electronics	19
Engine Calculations	20
Main Deck	21
Main Deck & Transom Outfitting	22
Sportbridge/ Extended Custom Bridge	23
Sunbrella Package- Weather Covers	23
Water Delivery Kit	24
Factory Options	24
USCG and Boarding Equipment Package	24
Construction	25
Upgrades	25
Disclaimer	26
Exclusions	27
Disclaimer	27
PHOTOS	28
Lazzara 92 Flybridge Motor Yacht Salon Seating	28
Lazzara 92 Flybridge Motor Yacht Salon	28
Lazzara 92 Flybridge Motor Yacht Salon Wood Flooring	28
Lazzara 92 Flybridge Motor Yacht Salon TV - Upgraded	28
Lazzara 92 Flybridge Motor Yacht Salon Overview	28
Lazzara 92 Flybridge Motor Yacht Salon- HDTV	28
Lazzara 92 Flybridge Motor Yacht Salon Refrigerator	29
Lazzara 92 Flybridge Motor Yacht Salon- Custom Glass Rack	29
Lazzara 92 Flybridge Motor Yacht iPod Remote	29
Lazzara 92 Flybridge Motor Yacht Gost Security & Tracking System	29
Lazzara 92 Flybridge Motor Yacht Salon Day Head	30
Lazzara 92 Flybridge Motor Yacht Salon Dinette -Replaced Lower Helm	30
Lazzara 92 Flybridge Motor Yacht Salon Dinette Bar Stools	30

Lazzara 92 Flybridge Motor Yacht Dinette Seating	30
Lazzara 92 Flybridge Motor Yacht Galley	30
Lazzara 92 Flybridge Motor Yacht Galley	30
Lazzara 92 Flybridge Motor Yacht Wine Chiller	31
Lazzara 92 Flybridge Motor Yacht Galley- Stove Top and Oven	31
Lazzara 92 Flybridge Motor Yacht Master Stateroom	31
Lazzara 92 Flybridge Motor Yacht Master Stateroom- Settee Lounge	31
Lazzara 92 Flybridge Motor Yacht Master Balcony Room	32
Lazzara 92 Flybridge Motor Yacht Master Stateroom- Dressing Bureaus	32
Lazzara 92 Flybridge Motor Yacht Master Balcony Room	32
Lazzara 92 Flybridge Motor Yacht Master Balcony Room	32
Lazzara 92 Flybridge Motor Yacht Master Balcony Room	33
Lazzara 92 Flybridge Motor Yacht Forward Stateroom	33
Lazzara 92 Flybridge Motor Yacht Forward VIP Head	33
Lazzara 92 Flybridge Motor Yacht Forward VIP Head	33
Lazzara 92 Flybridge Motor Yacht Starboard Head	34
Lazzara 92 Flybridge Motor Yacht Starboard Stateroom	34
Lazzara 92 Flybridge Motor Yacht Starboard Head	34
Lazzara 92 Flybridge Motor Yacht Port Stateroom	34
Lazzara 92 Flybridge Motor Yacht Crew Stateroom- Portside	35
Lazzara 92 Flybridge Motor Yacht Port Stateroom- Sliding Beds	35
Lazzara 92 Flybridge Motor Yacht Crew Stateroom-Portside	35
Lazzara 92 Flybridge Motor Yacht Crew Stateroom-Portside	35
Lazzara 92 Flybridge Motor Yacht Crew Stateroom Nightstand	36
Lazzara 92 Flybridge Motor Yacht Crew Stateroom- Starboard	36
Lazzara 92 Flybridge Motor Yacht Crew Stateroom - Starboard	36
Lazzara 92 Flybridge Motor Yacht Crew Refrigerator	36
Lazzara 92 Flybridge Motor Yacht Crew Station	37
Lazzara 92 Flybridge Motor Yacht Crew Electronics Monitoring Station	37

Lazzara 92 Flybridge Motor Yacht Crew Shower	37
Lazzara 92 Flybridge Motor Yacht Crew Electronics Monitoring Station	37
Lazzara 92 Flybridge Motor Yacht Laundry Room	38
Lazzara 92 Flybridge Motor Yacht Helm with AC	38
Lazzara 92 Flybridge Motor Yacht Helm Seating	38
Lazzara 92 Flybridge Motor Yacht Electronics	38
Lazzara 92 Flybridge Motor Yacht Engine Room	38
Lazzara 92 Flybridge Motor Yacht Engine Room	38
Lazzara 92 Flybridge Motor Yacht Engine Room	39
Lazzara 92 Flybridge Motor Yacht Engine Room	39
Lazzara 92 Flybridge Motor Yacht Engine Room	39
Lazzara 92 Flybridge Motor Yacht Engine Room	39
Lazzara 92 Flybridge Motor Yacht Custom Lighting Fixtures	39
Lazzara 92 Flybridge Motor Yacht Stairway to Bridge and Aft Deck	39
Lazzara 92 Flybridge Motor Yacht Flybridge	39
Lazzara 92 Flybridge Motor Yacht Flybridge- Seating	40
Lazzara 92 Flybridge Motor Yacht Flybridge Skylight	40
Lazzara 92 Flybridge Motor Yacht Flybridge- Grill	40
Lazzara 92 Flybridge Motor Yacht Flybridge-Seating	40
Lazzara 92 Flybridge Motor Yacht Cockpit Dining	40
Lazzara 92 Flybridge Motor Yacht Hot Tub	40
Lazzara 92 Flybridge Motor Yacht Cockpit Dining	41
Lazzara 92 Flybridge Motor Yacht Cockpit Sunpad Area	41
Lazzara 92 Flybridge Motor Yacht Cockpit IPS Controls	41
Lazzara 92 Flybridge Motor Yacht Beach Lounge Area	41
Lazzara 92 Flybridge Motor Yacht Beach Area with TV	41
Lazzara 92 Flybridge Motor Yacht Beach Area with Seating & TV	41
Lazzara 92 Flybridge Motor Yacht Bow Table & Seating	42
Lazzara 92 Flybridge Motor Yacht Transom Storage for 2 Jet Ski's	42
Lazzara 92 Flybridge Motor Yacht Bow Stereo with Speakers	42

Lazzara 92 Flybridge Motor Yacht Bow Sunpad	42
Lazzara 92 Flybridge Motor Yacht Double Windlass	42
Lazzara 92 Flybridge Motor Yacht Large Side Gunnel	42
Lazzara 92 Flybridge Motor Yacht Portside Profile	43
Lazzara 92 Flybridge Motor Yacht Bow	43
Lazzara 92 Flybridge Motor Yacht Night Light Profile	43
Lazzara 92 Flybridge Motor Yacht Illuminated LED Edge Lit Name Sign	43
Lazzara 92 Flybridge Motor Yacht Aerial Profile	43
Lazzara 92 Flybridge Motor Yacht Aerial Profile	43
Lazzara 92 Flybridge Motor Yacht Aerial Profile	44
Lazzara 92 Flybridge Motor Yacht Aerial Profile	44
Lazzara 92 Flybridge Motor Yacht Aerial Profile	44
Lazzara 92 Flybridge Motor Yacht Aerial Profile	44
Lazzara 92 Flybridge Motor Yacht Aerial Profile	44
Lazzara 92 Flybridge Motor Yacht Aerial Profile	44
Lazzara 92 Flybridge Motor Yacht Aerial Profile	44
Lazzara 92 Flybridge Motor Yacht Aerial Profile	45
Lazzara 92 Flybridge Motor Yacht Aerial Profile	45
Lazzara 92 Flybridge Motor Yacht Aerial Profile	45
Lazzara 92 Flybridge Motor Yacht Aerial Profile	45
Lazzara 92 Flybridge Motor Yacht Aerial Profile	45
Lazzara 92 Flybridge Motor Yacht Aerial Profile	45
Lazzara 92 Flybridge Motor Yacht Aerial Profile	45
Lazzara 92 Flybridge Motor Yacht Aerial Profile	46
Lazzara 92 Flybridge Motor Yacht Aerial Profile	46
CONTACTS	47
Contact details	47
Telephones	47
Office hours	47
Address	47

SPECIFICATIONS

Overview

This 2012 92' Lazzara just came out of the yard for her annual service - She is turnkey ready to go!

The Algohythm is the latest in the LSX 92 series from Lazzara and accommodates eight overnight guests in four staterooms, plus four crew members. Powered by four super-efficient Volvo IPS engines, the fuel economy is unsurpassed in the industry. Algohythm is a custom designed family friendly yacht and was specifically designed with the owner and guest in mind. A special feature is the extended sundeck that creates a welcome shaded area on the aft deck. The flybridge has been extended by 300% and features a hot tub, creating an atmosphere of luxury living on all levels of the yacht. This yacht has excellent accommodations on both levels including the bow for sunbathing. The lower inside helm station was removed from the main deck which extended the main salon for more living and socializing. This boat was also upgrade and equipped with a Passarelle for easy Mediterranean style boarding.

Please provide one day's notice for all showing requests. Also available for Sunset Cruises and Charters in or around the Sarasota and Tampa Bay areas. This is a great opportunity to spend extended time on the yacht before your final purchase.

This Volvo IPS system offers easy operation with the joystick control, and can make docking a fun and relaxed experience. The integrated Volvo Dynamic Positioning System will hold the boat in place when docking, anchoring, or waiting on a bridge. The boat is equipped with zero speed stabilization to maximize your comfort while at anchor or in heavy traffic marinas, and rough sea conditions.

With a cruising speed of 25 knots thanks to the 700 horsepower Volvo engines, Algohythm glides over the water for a smooth ride. The state-of-the-art design features a hand-laid, vacuum bagged, unidirectional fiberglass hull with balsa coring and a hand laid, vacuum bagged, E-glass and graphite deck with balsa coring and one mold piece. Algohythm also features the best in electronics, including a 64-channel ISIS 500 vessel monitoring system and nine LED flatscreen televisions including a 60" LED HDTV with surround sound stereo system. All TV's have HDTV Receivers.

Four luxurious staterooms include a master with a king sized bed. Five spacious bathrooms with double sinks and all the amenities of home are located throughout the yacht. A full kitchen with ample dining space and relaxing leather furniture offers seating areas with expansive views. There are laundry facilities onboard, and completely separate quarters for crew members with two bunk rooms and full head with separate shower.

OWNER WILL CONSIDER TRADES OF LATE MODEL CONVERTIBLE OR MOTOR YACHTS.

Basic Information

Category: Flybridge

Sub Category: Motor Yacht

Model Year: 2012

Year Built: 2012

Country: United States

Coast Guard #: 1237588

Fly Bridge: Yes

Cockpit: Yes

Dimensions

LOA: 92' 0" (28.04m)

Beam: 21' 1" (6.43m)

Max Draft: 4' 10" (1.47m)

Speed, Capacities and Weight

Displacement: 136000 Pounds

Water Capacity: 350 Gallons

Holding Tank: 250 Gallons

Fuel Capacity: 1700 Gallons

Accommodations

Total Cabins: 4

Sleeps: 8

Total Heads: 5

Crew Cabin: 2

Crew Heads: 1

Hull and Deck Information

Hull Material: Fiberglass

Engine Information

Engines: 4

Manufacturer: Volvo

Model: IPS 900

Engine Type: Inboard

Fuel Type: Diesel

DETAILED INFORMATION

Annual Service and Yard Maintenance July-August 2018

Full 2000 Hour Service on all 4 Engines

Full 2000 Hour Service on all 4 Engine Drives

Bottom Paint

Propellers and Prop Speed

Exterior Paint Touchup

All New Upgraded 2018 A/C System

All New Flybridge Isinglass

Eplex Upgrades

All Exterior Tables Refinished

Prop Speed Application

Wax Hull

Spare Propellers Tuned with Prop Speed

Interior Decor

Headliner:

- Majilite Cachet

Flooring:

- Salon- hardwood flooring
- Staterooms- carpet
- Dayhead- hardwood flooring
- Helm area - hardwood flooring
- Crew station - hardwood flooring
- Master and VIP Heads - Marble Flooring- UPGRADE
- Crew Head - hardwood flooring
- Galley- Wood flooring

Wall Coverings:

- Head walls - Day Head has Leather Wallpaper - UPGRADE
- Foam backed wall fabric and/or vinyl throughout

Salon

- Overhead lighting - LED
- Warm white LED
- High gloss wood interior
- Storage cabinets
- Wood flooring
- Port and starboard custom sectional upholstered in Ultra-Leather -Ostrich -**UPGRADE (converts out to make a bed)**
- Hunter Douglas pleated shades
- Wet bar includes refrigerator with icemaker-Outside in Mezzanine Deck
- Two (2) bar stools
- Bar storage, cabinets with bottle and glass racks
- Two (2) Freezer drawer compartments with ice maker
- Coffee table
- 120V AC duplex receptacles
- Redesigned dining table-Drops down to turn into sleep area to accommodate up to two (2) adults or three (3) children
- HDMI Connection for gaming
- Pop-up 32" TV rear facing for cockpit viewing

Dayhead- Salon

- Wood vanity top and undermount sink
- Single lever faucet in polish chrome finish
- Headhunter marine toilet
- Mirror
- Wood flooring
- Storage
- Custom snake skin wall paper- UPGRADE

Galley and Dinette

- Microwave/ Convection oven
- Designer range hood
- Stainless steel appliances
- Refrigerator with icemaker
- Wine chiller

- Large separate ice maker
- Silestone countertops
- Cook-top, recessed four-burner
- Coffee maker
- Storage cabinets, upper and lower
- Settee with storage
- Custom dinette table
- Glass serving area
- Lighting, indirect
- Wood plank flooring
- Two Custom Chairs
- 120 VAC duplex receptacles (GFI protected)
- Stainless steel under mount sink with single lever faucet
- Additional storage throughout Galley: above refrigerator, behind dining table, above pantry, pull-out pantry

Master Stateroom

- Walk around Lazzara king size bed with innerspring mattress
- Settee lounge- Starboard Side
- Storage underneath, King bed- all sides
- One (1) storage cabinet
- One (1) Dressing bureaus portside with six (6) drawers
- Veneered night stand, port and starboard with wood tops and drawers/ bureaus, port and starboard
- Shades over panoramic windows
- Private access to bathroom and closet
- Two (2) Hanging closets- one (1) port, one (1) starboard both with drawers
- Carpet
- Majilite overhead panels with foam backing
- Two (2) " Horizon" panoramic windows
- Window Treatments
- Direct and indirect lighting
- Receptacles- 120V AC duplex
- Decorative sconces
- 46" HDTV with surround sound. Blu Ray DVD-HDMI Connection for gaming

Master Balcony Room

- Private master sitting area that lowers down from hull side over the water with below underwater lighting. Perfect for morning coffee or quality time away from crew or guests. this also allows for a personal morning swim.

- Teak Flooring
- Can also be used as a extra huge walk-in closet

Master Bathroom

- Oversized - largest in its class
- Wood vanity with two (2) vessel sinks-**UPGRADE**
- Single lever lavatory faucet, polish chrome finish
- Large Medicine cabinet
- Marble flooring with a six (6) inch wood border
- Marble enclosed full size shower with seamless glass enclosure and multiple shower heads with Jacuzzi tub - Perfect for ladies and small children bath time.
- Headhunter marine toilet
- Towel bars
- Exhaust fan
- Recessed warm white LED down lights
- Two (2) 120V AC duplex receptacles with ground fault breakers
- Linen closet
- Ovehead low voltage warm white LED lighting

Forward VIP Stateroom

- Full size bed with innerspring mattress
- 26" HDTV- Blu Ray DVD - HDMI Connection for gaming
- Hanging locker
- Chain locker bulkhead with access
- Storage cabinet with drawers and shelves
- 24V reading lights Halogen
- Lighting low voltage warm white LED
- Deck hatch/screen/blackout
- Carpet
- Storage under bed
- 120 VAC duplex receptacles
- Polished chrome fixtures

Forward VIP Head

- Marble flooring
- Lighting low voltage AC halogen
- Power vent fan-24 Volt
- Contemporary shower set, polished chrome

- Shower with seamless glass enclosure
- Headhunter marine toilet
- Storage, medicine cabinet
- Wood vanity with vessel sink
- Wall mounted soap dish, tumbler and tissue holder
- 120V AC duplex receptacles (GFI protected)

Port VIP Stateroom

- Lazzara sliding twin size beds with innerspring mattresses- converts into a double bed when pulled together
- 26" HDTV, Blu Ray DVD, HDMI Connection for gaming
- Glass window on inboard cabin wall
- Headboard
- Hanging locker with full length mirrored door
- Nightstand with drawers
- Storage drawers under bed
- Carpet
- Majilite overhead panels with foam backing
- Blinds over window
- "Horizon" panoramic windows
- Direct and indirect lighting
- Receptacle-120V AC duplex

Starboard VIP Stateroom

- Lazzara Queen with innerspring mattresses
- 26" HDTV, Blu Ray DVD, HDMI Connection for gaming
- Glass window on inboard cabin wall
- Headboard
- Hanging locker with full length mirrored door
- Nightstand with drawers
- Storage drawers under bed
- Carpet
- Majilite overhead panels with foam backing
- Blinds over window
- "Horizon" panoramic windows
- Direct and indirect lighting
- Receptacle-120V AC duplex

Port & Starboard VIP Head

- Headhunter marine toilet
- Power vent fan
- Glass towel shelf
- Storage, medicine cabinet
- Wood vanity top with vessel sink
- Marble flooring
- Contemporary shower set, polished chrome finish
- Single lever faucet in polished chrome
- Shower with seamless glass enclosure
- 120V AC duplex receptacles (GFI protected)

2 Crew Staterooms

- Room for 4 Crew
- Bunk, lower with storage below
- Bunk, upper
- Captain bunk with Pullman above
- Both rooms equipped with HDTV and Blu Ray DVD-HDMI Connection for gaming
- Flooring, carpet
- Lighting, low voltage warm white LED
- Outlets, 120V AC GFI protected
- Storage drawers
- Access to main deck
- Access to engine room
- Refrigerator
- Hanging lockers

Crew Head

- Headhunter marine toilet
- Separate shower and sink
- 120V AC duplex receptacles (GFI protected)
- Storage locker

Laundry Room

- Miele side by side washer/dryer
- Linen closet

AV & Entertainment

- Niles whole boat audio with six (6) zones (salon, master stateroom, bow, flybridge, aft deck and Lazzara beach lounge). This boat will ROCK you!!!
- Four (4) iPods 8GB
- Bow deck - four (4) speakers and two (2) sub-woofers
- One (1) iPad- Salon control of AV
- Main Salon- Sharp 60" HD TV. Gallo System Speaker - **UPGRADE**
- Master Stateroom- Samsung 46" HD TV with Blu Ray DVD player, Ominimount, fast mount, Sonance I port in wall docking system for iPod map 350, Sonance I port video upgrade kit, Sonance I port remote (white). Gallo speaker system
- VIP Staterooms- Sharp 26" LG HDTV with Blu Ray, Sonance I port in wall docking system for iPod map 350, Sonance I port video upgrade kit, Sonance I port remote (white)
- Beach Area- 40" Sunview LCD HD TV, Four (4) speakers and Two Sub-woofers
- Aft Deck- Samsung 30" HD TV with Blu Ray and 4 speakers and One Sub-woofer.
- Flybridge- Samsung 32" HDTV, Six (6) speakers
- Galley - LG 26" LED built-in
- KVH HD7 satellite antenna with five (5) HD receivers
- Apple TV
- Multiple JBL speakers located on the Aft Deck, Cockpit, Flybridge and Bow with separate controls

Mechanical

Air Conditioning System

- AC at Helm and Bridge Areas
- Six zone 138,000 BTU air conditioning system with air handlers and thermostats for each zone; touch pad controls
- Insulated copper piping supply and return lines
- Individual head exhaust fans

Bilge System:

- Electric bilge AC pump with manifold system
- 24 VDC automatic bilge pumps (2 aft, 1 fwd, 2 engine room)
- 24 VDC high- water alarm (2 aft, 1 fwd, 2 engine room)

Black Water System:

- 250 US gallon black water storage tank
- Headhunter toilets
- Holding tank level indicator
- Dockside and overboard pump out
- Ozone treatment machine

Grey Water System:

- Sump box w/ pump, 24V- shower/drains
- Sump box w/ pump - air conditioning condensate drains

Control & Instruments - Main Engines:

- Volvo display all engines
- Station transfer panels
- Shift & throttle controls, electronic with engine sync
- Volvo joystick control for docking and slow speed maneuverability
- Volvo electronic steering
- Key switch start/stop
- One (1) Cockpit control station - Joystick control Volvo / Station transfer panels / Start & stop Panels

Engines & Transmissions:

- Four (4) Volvo IPS 900 systems with just over 2000 Hours (Date Read 04/06/2018) - see spec details section for exact hours registered
- Nibral counter - rotating propellers
- Extra pair of props
- Upper and Lower IPS Docking Stations makes this yacht a dream to dock

Engine Room:

- Epoxy coated engine room - white
- Flooring - metal diamond plate
- Emergency panel
- Freshwater hose & spigot
- Emergency access through deck hatch
- Lazzara engineered "ultra sound" engine room
- Powered ventilation system with demisters for exhaust and supply
- Access from crew quarters

Exhaust System- Main Engines:

- Underwater, through drive units

Fire Extinguishing System:

- Fire suppression system- automatic with engine shutdown, override and manual pull
- Carbon monoxide detectors in crew cabin and balcony room
- Twelve (12) mounted fire extinguishers
- Smoke detectors

Fresh Water System:

- Water maker by Sea Recovery - 1,400 gallons per day
- 350 US gallon potable water tank- FDA approved
- Aft deck shower- hot & cold
- Pressure water - MACH 5 240V
- Water filtration system
- Water heater - 240V (30 gallon)
- Individual station water maintenance shutoff
- Anchor/foredeck wash down system- fresh water
- Aft wash down system
- Dockside water inlet-aft deck

Fuel System:

- 1700 gallon fuel tank
- Racor fuel filters - 2x30 micron (generator) Racor 500 / 4x10 micron (main engine) - dual Racor 900
- Four (4) main engine electric priming pumps
- Four (4) main engine manual priming pumps

Lube Oil System:

- Lube oil change system plumbed to both main propulsion and generator engines
- Lazzara engineered "Ultra Sound" engine room system
- Interior "Isolation Dampening" system
- Thermo barrier foil

Sea Water Cooling System:

- Four (4) sea strainers - Seacocks on all underwater fittings, Two (2) Generator, Air Conditioning, Watermaker

Steering System:

- Volvo electronic system
- Volvo joystick at upper and aft deck stations
- One (1) steering wheel at upper deck

Electrical

Exterior Lighting:

- Overhead LED lights aft deck - Navigation lights (LED)
- Exterior LED deck lights
- Aft deck LED transom stairs
- Boat deck LED lighting

- Flybridge LED lights
- Searchlight - chrome

Generator:

- Two (2) Onan 27.5kW diesel/240 VAC/ 60 HZ, single phase, with sound enclosure and control panels
- Generators Hours - Port 2950.3 and Starboard 2879 (04/06/2018)
- Engine fitted with alternator and muffler

Electrical Grounding:

- AC and DC bonding and grounding system with large zinc hull plate
- Volvo active corrosion protection grounding system

Interior Lighting:

- Overhead LED lighting (low voltage DC)
- Emergency 24 volt DEC lighting

Switchboard, Load Banks & Control Panels:

- Batteries - Northstar NSB 130 (2 for generator and house & 8 for engine)
- Two (2) battery chargers (60 amp Mastervolt chargers)
- Panel - AC main selector - 240V in Pilothouse
- Panel- Main Distribution - AC in Engine Room
- Engines DC panel in engine room
- Standard E-Plex system

Wire and Cables:

- All wire to approved specifications
- All cables marked with circuit number
- Wire chase runs throughout

Electronics

Alarms/Monitors:

- Additional ISIS Monitors Eight (8) - Flybridge and Crew Quarters
- Lazzara 64-channel ISIS 500 vessel monitoring system, including - Dynamic diagnostics, (1) 17" LCD monitor in Crew area, ECM output from engine monitor/ alarm electronics, Generator systems- Alarm/monitoring, Tank level readout and alarms, Fire Zone alarm for engine room, Bilge alarms and pump run indication, Auto fire discharge alarm
- Volvo engine alarm
- Fire & carbon monoxide smoke detectors

Navigation and Communication:

Radar:

- Furuno Navnet 3D processor (Network SAT TV to Furuno System)
- Furuno DRS12A 12KW- 72 mile radar transceiver
- Furuno 6' open array antenna

Plotter/ GPS / WAAS:

- Sounder -Furuno DFF1 digital network BBG Echosounder module
- Instruments- Furuno PB100 Ultrasonic weather station sensor
- Autopilot- Simrad AP28EVC for Volvo IPS
- Satellite TV- KVH Tracvision HD7 HDTV system
- CCTV- Gost network cameras, engine room and aft deck
- Satellite Weather - Furuno Navnet Sirius Satellite Weather
- Communication- Two (2) Icom M604 VHF, cradle mounted handset with two (2) repeaters
- Cellular/Email/Internet- Telular cell phone, Quad-Brand / Tri-Band

Engine Calculations

Assume usable 1,450 gallon in
1,700 gallon fuel tank

Engine RPM	Knots	GPH Usage	Range- hrs	Range- nm	Range/Gal	
1950	23	80	18.13	416.88	0.29	Cruise Speed of Choice
1850	22	75	19.33	425.33	0.29	
1750	20.5	67	21.64	443.66	0.31	
1650	18	59	24.58	442.37	0.31	
1550	14	56	25.89	362.5	0.25	Max Tender Tow @ Cruise
1450	13.5	49	29.59	399.49	0.28	
1350	12.5	40	36.25	453.13	0.31	
1250	12	31	46.77	561.29	0.39	Slow Speed of Choice/With or Without Tender
1150	11.5	25	58	667	0.46	
1050	10.5	18	80.56	845.83	0.58	
1000	10	16	90.63	906.25	0.63	
950	9.5	15	96.67	918.33	0.63	Optimal Low Speed
900	9	12	120.83	1087.5	0.75	Cruise for

850	8.5	11	131.82	1120.45	0.77	Most Range
800	8	9.5	152.63	1221.05	0.84	
750	7.5	7	207.14	1553.57	1.07	
700	7	6	241.67	1691.67	1.17	
650	6.5	5	290	1885	1.3	
600	6	5	290	1740	1.2	

Main Deck

Anchor and Anchor Handling:

- Two (2) anchors, 150 lbs., stainless steel polished,
- Anchor chain storage in forepeak locker; 3/8 high strength -300ft.
- Anchor pockets
- Anchor wash down spigot with hose
- 4000lb. Windlass, chain with controls
- Deck Hardware: Electric air horn, Lazzara custom 16" bow, spring and stern cleats, 316L stainless steel, 8 cleats total, 2 pop-ups , 6 hawsers, 1 1/2" stainless steel 316L, steel rails on main deck, Burgee staff, custom stainless steel, with burgee flag, Escape hatch for forward VIP and Engine Room, Acrylic panel with stainless steel edge trim, LED logo, stainless steel, port and starboard, Bulwark boarding doors port and starboard, Teak aft deck and swim, platform deck Waterlight hatch for anchor locker, Waterlight hatch for E/R escape

Door and Hatches:

- Weather-tight engine room access
- Crew access cabinet
- Foredeck access hatch
- Stainless steel aft main salon sliding door
- Electric window adjacent to main salon sliding door
- Aft garage door hydraulically actuated

Port Lights and Windows:

- Continuous panoramic window system in hull-side at horizon level
- Main deck windows are tinted glass, laminated and chemically strengthened
- Helm windshield laminated and chemically strengthened
- Composite rub rails for forward hull-side windows
- LED Lights

Rails, Ladders and Gangways:

- Stainless steel (316L) round hand rails on all exterior decks

- Boarding ladder with handrail
- Solid PVC rubrail with stainless steel insert
- Bulwark doors port and starboard

Storage, Locker Foredeck:

- Foredeck locker for line and fender storage
- Aft deck haunch lockers
- Aft sunpad lockers

Main Deck & Transom Outfitting

Aft Deck:

- Electric drop down window into salon
- Cockpit - Added pop-up TV, Ice Maker, Refrigerator and Custom Bar Cabinet
- Deck self-bailing
- Flooring - Teak
- Lighting - Indirect
- Crew access cabinet
- Teak steps - floating
- Storage- haunches
- Wooden Custom Table - Cockpit
- Speakers- overhead
- Overhead cockpit lights
- Low level courtesy lights
- Ships bell forward
- Stainless steel baby gates
- Large storage compartments under fixed seating
- Algohythm logo engraved on 1/2" abrasion resistant acrylic panel with stainless steel frame-illuminated LED edge lit technology by Yachtsign
- One (1) docking station (port) - Joystick control Volvo, Station transfer panels, Start/Stop panels- 2nd Station is wired if needed for starboard side but Joystick is NOT installed
- Waring winches, 24V electric - port and starboard

Aft Sport Deck:

- Four (4) step swim ladder, that can be used on any side of the swim platform
- Hydraulically operated garage door
- Garage to store tender and Jet Ski-"Two Toys"
- Fresh water inlet
- Cable TV/Phone connection
- Lazzara Beach Lounge - Articulating teak floor, Drop down aft wall with 42" LCD-(water proof) TV, Retractable chock system

- Retractable cleats for tender
- Shore power cord outlet
- Engine room windows with tinted glass
- Four (4) custom mesh storage hanging assemblies inside the garage for dive gear and water sports
- Fishing rod storage with custom rod holders

Bow Deck:

- Forward seating group
- Custom Wooden table
- Sunpad - **UPGRADED**
- Storage

Sportbridge/ Extended Custom Bridge

- ISIS Monitor
- AC Bridge
- Full driving console
- Three (3) 17" LCD highbridge monitors (daylight viewable)
- Map storage areas near console
- Captain's helm seat with topstitch
- Companion helm seats with topstitch
- Fixed "U" shaped seating to starboard- seats up to 10 people comfortably
- Large sun pad
- Port located activity cabinets with sink refrigerator and storage cabinet
- Hatchway leading downward to aft deck
- Carbon hardtop, mast and uprights with flat for electronics antenna
- Carbon fiber winglets
- SAT TV and companion domes mounted aft on hardtop
- Grill on Bridge
- Hot tub with custom sun pad cover

Sunbrella Package- Weather Covers

- Aft deck bar cover
- Aft deck and foredeck table covers
- Flybridge table cover
- Lounge chair covers
- Salon table cover
- Salon coffee table cover Galley table cover
- Textilene external forward windshield cover
- Fender covers

- Flybridge sunpad covers
- Flybridge Step cover
- Railing covers
- Grill cover

Water Delivery Kit

- Fuel /Oil filters for engines and genset
- Engine lube oil
- Five (5) fenders with covers and 1/2" braid line
- 3/4" dock lines with chafe guard and spliced eye, including 8 @ 40ft. ea.
- 50' Telephone connection cable
- 100' Dockside water connection hose
- Deck plate keys
- Manual crank handle for winch
- Protective interior furniture blankets
- Tackle box/miscellaneous electrical and plumbing fittings
- Toolbox with comprehensive hand tool kit
- Spare Parts on Board

Factory Options

- Custom color hull paint
- TRAC- Zero speed stabilization - **UPGRADE**
- Exterior teak rail package
- Exterior teak package- teak flybridge- bow and side decks
- Teak tables - three (2) in lieu of Corian - aft deck and foredeck
- All TV's **UPGRADED**
- Enhanced Electronics Package - Includes KVH HD7, 4 Add'l SAT HD TV receivers
- All Audio - **UPGRADED**
- Electronic Smart Glass Privacy Package - Includes Port/ Starboard VIP Staterooms, Laminated glass, Electrically dual mode
- Watermaker - Sea Recovery - 1400 gallons per day
- Brownie Hookah Diving Package B230X - Includes oil free electric compressor, powered reel, 150ft hose, 2 diver sets, 2 regulators
- Underwater lighting-Nine (9) high intensity metal halide
- Position hold from Volvo-(DPS System)
- Oil change system for engine and generators

USCG and Boarding Equipment Package

- One (1) life raft 10 people (valise type)
- Twenty (20) adult life jackets
- Two (2) children life jackets
- Complete USCG package including first aid kit
- EPIRB
- Handheld VHF
- Boarding ladder - six step, adjustable for tides

Construction

GRP Composite Construction

- Hand-laid, " vacuum bagged" triaxial unidirectional "E' fiberglass hull with balsa cored bottom and PVC foam sides
- Hand-laid, " vacuum bagged" triaxial unidirectional "E' with graphite balsa cored deck and flybridge-- one mold piece (patent pending)
- Solid fiberglass chine, centerline and all hull penetration areas
- Blister resistant gelcoat under the waterline
- Vinylester resin for hull and deck
- Bottom paint
- High performance UV resistant exterior gelcoat
- Light weight balsa cored reinforced stringer system
- Light weight balsa cored bulkhead and floors, lower sole plywood
- Solid vinyl/PVC rub rail with stainless steel insert
- Quad engine stringer system
- Numerous applications of graphite reinforcements
- Composite rub rails on hull-side to protect forward windows

Upgrades

- Swim platform **UPGRADED** and modify to accommodate the size/weight of a Boston Whaler 130 Super Sport- (**Dinghy is NOT Included with this Deal**)
- This is a real asset for people who scuba dive or watersports
- Forward VIP Increase Size of Bed
- Salon- Design, Fabricate and Install Starboard Side Cabinets
- Galley storage above Appliances
- Master Stateroom- Redesign
- Port VIP- Sliding Bunks
- Balcony Addition to Master Stateroom
- Crew - Captains Room/ One -Way Film and Pullman Birth in Captain's Room
- Flybridge- Added larger Grill Cabinet and Storage
- Cockpit - Added pop-up TV, Ice Maker, Refrigerator and Custom Bar Cabinet

- Aft Deck - Multi-Colored Lighting LED's throughout Outside of Vessel
- Bow - Added Speakers / LED Lighting / Raised Gunnel Railing on Both Sides
- Engine Room - 1,400 gpd Water Maker
- Exterior Color - Blue Hull with Silver Superstructure
- Televisions- All **UPGRADED** to HDTV's
- Aft Deck- provide and Install Passarelle
- Interior Wood - Fiddleback & Makore
- Port VIP- Install Additional Storage Space along Portside Berth
- Galley- Install Hatch Outside of Laundry Floor for Added Storage Below
- Galley - Create Storage Outboard of Galley Settee
- Galley - Settee Table to have Stainless Steel pedestal
- Lower Foyer - Install Wood / Add Access Panels in Floor
- Interior Stairs & Steps - Wooden Stairs and Steps
- Flybridge- Install Refrigerator/ Sink in Bar Area
- Safes - Install in Master and Crew
- Yacht Sign - Wired for name Plates
- Navigation/ Electronics Upgrades
- Engine Room - Additional Lighting-24VDC
- Bow - Install Stainless Steel Striker Plates. Add Top to Search Light
- Heads- Added A/C
- Rubrail- Extend Rail to Follow Style Line. Provided Black Rubrail
- **Flybridge Extended by over 300%**
- Mattress - **UPGRADED**
- Custom Coffee Table
- Full flybridge enclosure with AC
- Wave Wi-Fi antenna system
- Gost security and tracking system
- IRIS 295 thermal imaging camera - night vision
- Modification to swim platform arms to allow each to move independently
- **Total in UPGRADES \$550,000**

Disclaimer

The Company offers the details of this vessel in good faith but cannot guarantee or warrant the accuracy of this information nor warrant the condition of the vessel. A buyer should instruct his agents, or his surveyors, to investigate such details as the buyer desires validated. This vessel is offered subject to prior sale, price change, or withdrawal without notice. Mechanical Disclaimer Engine and generator hours are as of the date of the original listing and are a representation of what the listing broker is told by the owner and/or actual reading of the engine hour meters. The broker cannot guarantee the true hours. It is the responsibility of the purchaser and/or his agent to verify engine hours, warranties implied or otherwise and major overhauls as well as all other representations noted on the listing.X

Exclusions

Owner's personal belongings.

Disclaimer

The Company offers the details of this vessel or yacht in good faith but cannot guarantee or warrant the accuracy of this information nor warrant the condition of the vessel. A buyer should instruct his representatives, agents, or his surveyors, to investigate such details as the buyer desires validated. This vessel or yacht is offered subject to prior sale, price change, or withdrawal without notice.

PHOTOS

Lazzara 92 Flybridge Motor Yacht Salon



Lazzara 92 Flybridge Motor Yacht Salon Seating



Lazzara 92 Flybridge Motor Yacht Salon Wood Flooring



Lazzara 92 Flybridge Motor Yacht Salon TV - Upgraded



Lazzara 92 Flybridge Motor Yacht Salon Overview



Lazzara 92 Flybridge Motor Yacht Salon-HDTV



Lazzara 92 Flybridge Motor Yacht Salon- Custom Glass Rack



Lazzara 92 Flybridge Motor Yacht Salon Refrigerator



Lazzara 92 Flybridge Motor Yacht Gost Security & Tracking System



Lazzara 92 Flybridge Motor Yacht iPod Remote



Lazzara 92 Flybridge Motor Yacht Salon Day Head



Lazzara 92 Flybridge Motor Yacht Salon Dinette -Replaced Lower Helm



Lazzara 92 Flybridge Motor Yacht Salon Dinette Bar Stools



Lazzara 92 Flybridge Motor Yacht Dinette Seating



Lazzara 92 Flybridge Motor Yacht Galley



Lazzara 92 Flybridge Motor Yacht Galley



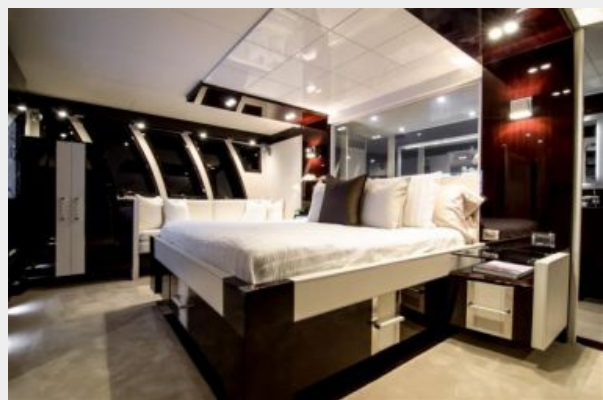
Lazzara 92 Flybridge Motor Yacht Wine Chiller



Lazzara 92 Flybridge Motor Yacht Galley- Stove Top and Oven



Lazzara 92 Flybridge Motor Yacht Master Stateroom



Lazzara 92 Flybridge Motor Yacht Master Stateroom- Settee Lounge



**Lazzara 92 Flybridge Motor Yacht Master
Balcony Room**



**Lazzara 92 Flybridge Motor Yacht Master
Stateroom- Dressing Bureaus**



**Lazzara 92 Flybridge Motor Yacht Master
Balcony Room**



**Lazzara 92 Flybridge Motor Yacht Master
Balcony Room**



**Lazzara 92 Flybridge Motor Yacht Master
Balcony Room**



**Lazzara 92 Flybridge Motor Yacht Forward
Stateroom**



**Lazzara 92 Flybridge Motor Yacht Forward
VIP Head**



**Lazzara 92 Flybridge Motor Yacht Forward
VIP Head**



Lazzara 92 Flybridge Motor Yacht Starboard Head

Lazzara 92 Flybridge Motor Yacht Starboard Stateroom



Lazzara 92 Flybridge Motor Yacht Starboard Head



Lazzara 92 Flybridge Motor Yacht Port Stateroom



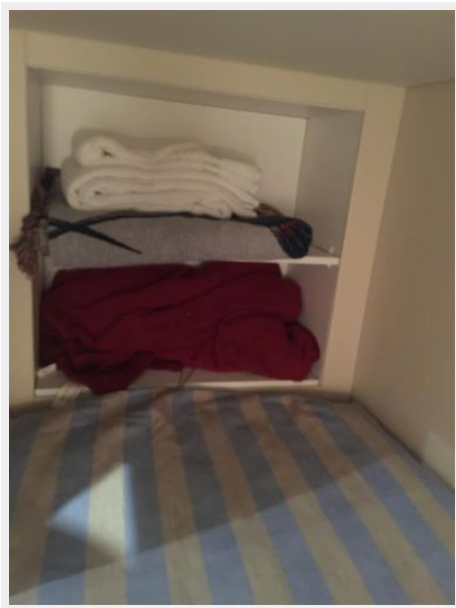
**Lazzara 92 Flybridge Motor Yacht Port
Stateroom- Sliding Beds**



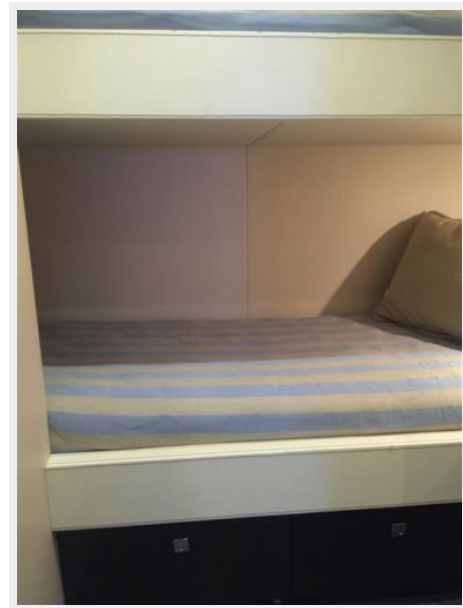
**Lazzara 92 Flybridge Motor Yacht Crew
Stateroom- Portside**



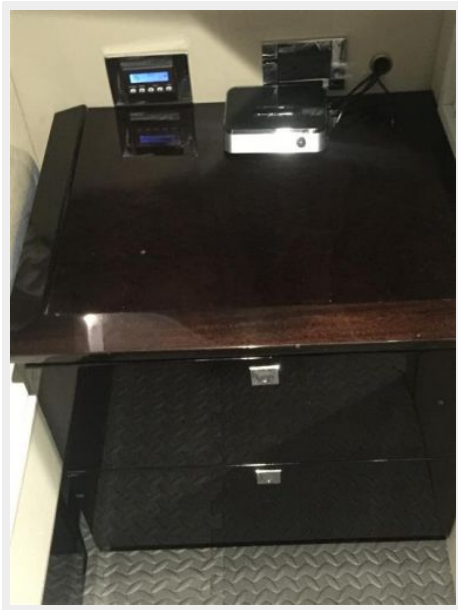
**Lazzara 92 Flybridge Motor Yacht Crew
Stateroom-Portside**



**Lazzara 92 Flybridge Motor Yacht Crew
Stateroom-Portside**



**Lazzara 92 Flybridge Motor Yacht Crew
Stateroom Nightstand**



**Lazzara 92 Flybridge Motor Yacht Crew
Stateroom- Starboard**



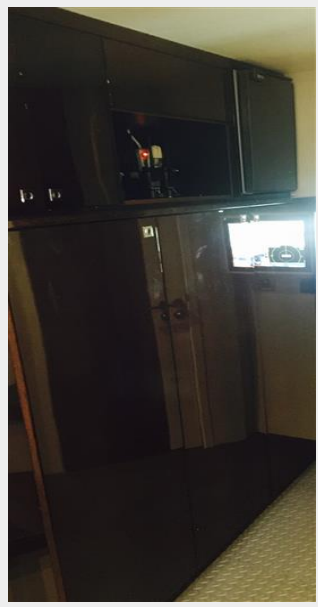
**Lazzara 92 Flybridge Motor Yacht Crew
Stateroom - Starboard**



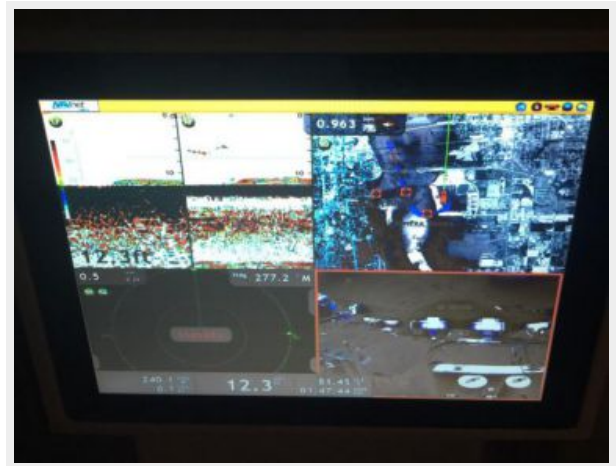
**Lazzara 92 Flybridge Motor Yacht Crew
Refrigerator**



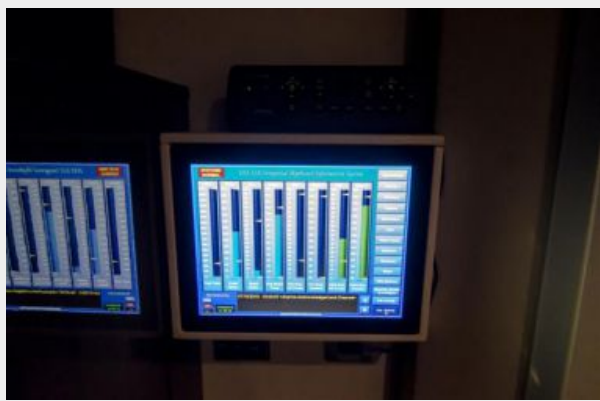
Lazzara 92 Flybridge Motor Yacht Crew Station



Lazzara 92 Flybridge Motor Yacht Crew Electronics Monitoring Station



Lazzara 92 Flybridge Motor Yacht Crew Electronics Monitoring Station



Lazzara 92 Flybridge Motor Yacht Crew Shower



Lazzara 92 Flybridge Motor Yacht Laundry Room



Lazzara 92 Flybridge Motor Yacht Helm with AC



Lazzara 92 Flybridge Motor Yacht Helm Seating



Lazzara 92 Flybridge Motor Yacht Electronics



Lazzara 92 Flybridge Motor Yacht Engine Room



Lazzara 92 Flybridge Motor Yacht Engine Room



Lazzara 92 Flybridge Motor Yacht Engine Room

Lazzara 92 Flybridge Motor Yacht Engine Room



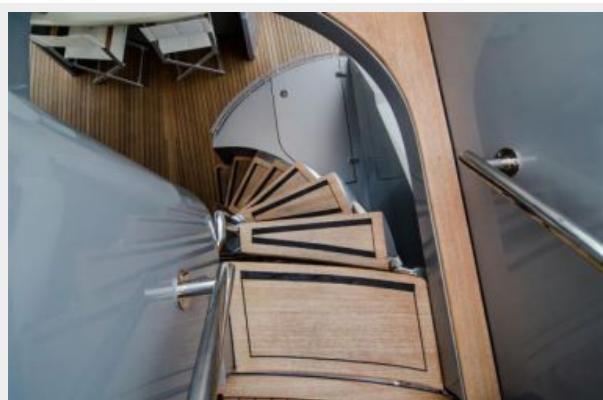
Lazzara 92 Flybridge Motor Yacht Engine Room

Lazzara 92 Flybridge Motor Yacht Custom Lighting Fixtures

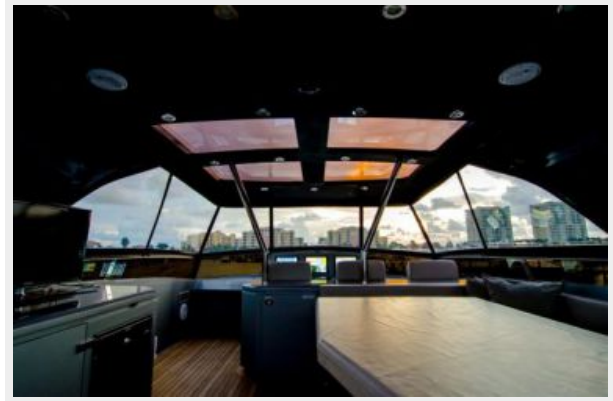


Lazzara 92 Flybridge Motor Yacht Stairway to Bridge and Aft Deck

Lazzara 92 Flybridge Motor Yacht Flybridge



Lazzara 92 Flybridge Motor Yacht Flybridge- Seating **Lazzara 92 Flybridge Motor Yacht Flybridge Skylight**



Lazzara 92 Flybridge Motor Yacht Flybridge- Seating **Lazzara 92 Flybridge Motor Yacht Flybridge- Grill**



Lazzara 92 Flybridge Motor Yacht Hot Tub



Lazzara 92 Flybridge Motor Yacht Cockpit Dining



Lazzara 92 Flybridge Motor Yacht Cockpit Dining



Lazzara 92 Flybridge Motor Yacht Cockpit Sunpad Area



Lazzara 92 Flybridge Motor Yacht Cockpit IPS Controls



Lazzara 92 Flybridge Motor Yacht Beach Lounge Area



Lazzara 92 Flybridge Motor Yacht Beach Area with TV



Lazzara 92 Flybridge Motor Yacht Beach Area with Seating & TV



Lazzara 92 Flybridge Motor Yacht Transom Storage for 2 Jet Ski's



Lazzara 92 Flybridge Motor Yacht Bow Table & Seating



Lazzara 92 Flybridge Motor Yacht Bow Stereo with Speakers



Lazzara 92 Flybridge Motor Yacht Bow Sunpad



Lazzara 92 Flybridge Motor Yacht Double Windlass



Lazzara 92 Flybridge Motor Yacht Large Side Gunnels



Lazzara 92 Flybridge Motor Yacht Bow



Lazzara 92 Flybridge Motor Yacht Portside Profile



Lazzara 92 Flybridge Motor Yacht Night Light Profile



Lazzara 92 Flybridge Motor Yacht Illuminated LED Edge Lit Name Sign



Lazzara 92 Flybridge Motor Yacht Aerial Profile



Lazzara 92 Flybridge Motor Yacht Aerial Profile



Lazzara 92 Flybridge Motor Yacht Aerial Profile



Lazzara 92 Flybridge Motor Yacht Aerial Profile



Lazzara 92 Flybridge Motor Yacht Aerial Profile



Lazzara 92 Flybridge Motor Yacht Aerial Profile



Lazzara 92 Flybridge Motor Yacht Aerial Profile



Lazzara 92 Flybridge Motor Yacht Aerial Profile



Lazzara 92 Flybridge Motor Yacht Aerial Profile



Lazzara 92 Flybridge Motor Yacht Aerial Profile



Lazzara 92 Flybridge Motor Yacht Aerial Profile



Lazzara 92 Flybridge Motor Yacht Aerial Profile



Lazzara 92 Flybridge Motor Yacht Aerial Profile



Lazzara 92 Flybridge Motor Yacht Aerial Profile



Lazzara 92 Flybridge Motor Yacht Aerial Profile



Lazzara 92 Flybridge Motor Yacht Aerial Profile



CONTACTS

Andrey Shestakov, leading yacht broker of the sales department of Shestakov Yacht Sales Inc. Shestakov Yacht Sales Inc., the official representative of the Miami/Fort Lauderdale FL headquarters.

Contact details

Email: andrey@shestakovyachtsales.com

Web: shestakovyachtsales.com/en/

Telephones

USA: +1(954)274-4435

Office hours

Monday – Saturday: **9:00 - 21:00** EDT

Sunday: **closed**

Address



Harbour Towne Marina, 850 NE 3rd St,
STE 213, Dania, FL 33004