

41 TARTAN — TARTAN



Судостроитель: TARTAN

Длина общая: 14' 0" (4.27m)

Год постройки: 2007

Модель: Cruising/Racing Sailboat

Цена: ЦЕНА ЯХТЫ ПО ЗАПРОСУ

Местонахождение: United States

Купить 41 Tartan — TARTAN а также выбрать подходящую вам яхту из нашего каталога яхт вам поможет опытный яхтенный брокер Андрей Шестаков. На сегодняшний день компания Shestakov Yacht Sales Inc. имеет большое количество яхт в собственном списке продаж, а также тесно сотрудничает со всеми крупными яхтенными производителями по всему миру.

Для того чтобы купить яхту 41 Tartan — TARTAN а также проконсультироваться по любому вопросу связанному с покупкой, продажей, чартером яхт позвоните по телефону **+7(918)465-66-44**.

ОГЛАВЛЕНИЕ

ОГЛАВЛЕНИЕ	2
ХАРАКТЕРИСТИКИ	3
Обзор	3
Основная информация	11
Размеры	11
Размещение	11
Корпус и палуба	11
Информация о двигателе	11
ФОТОГРАФИИ	12
41 Tartan	12
41 Tartan Layout	12
41 Tartan Line Drawing	12
КОНТАКТЫ	24
Контактная информация	24
Телефоны	24
Время работы	24
Адрес	24

ХАРАКТЕРИСТИКИ

Обзор

Some cruising boats are at their best in the dealer's parking lot. Not the Tartan 4100, which is at her best either romping into a stiff sou'wester or anchored sedately in your favorite harbor. In either situation you'll appreciate the mobility of the T-shaped cockpit, the clear visibility afforded from behind the 44-inch wheel, and the fact that the hefty Harken 53 self-tailing chrome primary winches are located within reach of the helm. Wide, flat sidedecks, effective nonskid surfacing, and extra-high 27-inch lifelines make working on deck safe. And traditionalists won't be disappointed with the 4100's on-deck detailing; solid teak toerails and stern taffrail, a polished stainless-steel stemhead fitting, and special mooring chocks with built-in rollers are as functional as they are beautiful. The Tartan 4100 turns 41 feet into the ultimate getaway space. The master stateroom features a queen-size berth with hanging locker, shelves, clothes stowage, and in-suite head with shower. The salon, with a varnished drop-leaf centerline dinette table that can handle eight guests for dinner or drinks, has a built-in entertainment center. The L-shaped galley features a top- and front-loading icebox, dual 9-inch-deep stainless-steel sinks, and a 3-burner gimballed stove with oven and broiler. The vessel was designed and built to be handled by a couple for extended long range cruising. Her user friendly deck layout, in boom furling, large cockpit and well planned comfortable cabin make this very desirable for those that are looking for blue water sailing or coastal cruising. Her retractable centerboard reduces the draft allowing her to get into many areas of the Bahamas and Florida Keys. With the centerboard down she sails close to the wind. With her light weight carbon fiber spar vessel performance is excellent. She is equipped with a generator, water maker and a fully air-conditioned cabin.

It is not often that you find a boat this clean and well maintained. Her engine is well maintained and spotless. Both the engine and generator are very accessible. The Reverso oil exchange pump simplifies changing oil.

Through out the boat storage is plentiful. Aft of the nav station is a locker full of shelves perfect for use as a pantry. Behind the settees there is a lot of storage as well as under most seating areas.

Deck Hardware

The deck is well laid out with many custom additions. Forward at the bow and aft near the transom extra roller chocks were added to guide dock lines. Aft is the Nova lift to handle the dinghy outboard. The outboard is easily lifted with the help of one of the primary winches just forward of the Nova lift. Dinghy davits were added aft. Attached to the davits are brackets that hold a starboard fish file table. Standing on the swim platform the table is perfect height for cleaning your day's catch. With the swim platform shower right there clean up is a breeze.

- (2) Harken 53.2 STC (self-tailing 2-speed chrome) primary genoa winches
- (1) Harken Electric 40.2 STC (self-tailing 2-speed chrome) aft house top-mounted winch for boom furl, spinnaker halyard, main sheet and main halyard.

- (1) Harken 40.2 (self-tailing 2-speed chrome) aft house top-mounted winch for topping lift, center board and boom vang
- (1) Harken 40.2 C genoa halyard winch mounted on mast
- Harken roller furling for genoa
- (6) Forespar turnbuckle covers
- Lewmar electric anchor windless
- 27" x 1 1/8" diameter, all-welded stainless steel stanchions, 4 hole mounting base with backing plate installation
- 27" x 1 1/8" diameter tube double stainless steel bow rail with rail mounted combination navigation light.
- 27" x 1 1/8" diameter tube double stainless steel split stern rail with rail mounted navigation light
- 7 x 19 double lifelines with port, starboard and stern boarding gates with pelican hooks
- Custom designed and fabricated stainless steel stem fitting with integral double bow roller
- Custom fabricated rail mount chocks for bow mooring cleats
- Stainless steel 10" bow mooring cleats with backing plate
- Custom fabricated mid mooring chocks with 10" stainless steel mooring cleats installed with backing plates.
- Custom stern stainless steel quarter caps with roller chocks
- Stainless steel 10" aft mooring cleats
- Aluminum slotted toerails through bolted to 6060 T6 aluminum bar in hull flange
- Inboard Harken adjustable lead genoa tracks with wide sheave cars
- (8) Spinlock rope clutches for aft sail control leads
- Harken turning blocks at base of mast for aft sail control leads
- Five-part Harken mainsheet system led to housetop electric self-tailing winch
- Harken traveler with six-part tagline adjustment led to aft end of house top for easy adjustment
- Custom stainless steel mast collar with multiple attachments for blocks
- Polished chrome 4" Dorades on teak Dorade caps
- (2) Stainless steel Dorade guards
- Companionway hatch sea hood with instrument pod
- 6" binnacle compass at helm
- Split anchor locker lid with latch
- CE unlimited offshore approved stainless steel deck hatches
- CE unlimited offshore approved stainless steel port lights
- Housetop teak handrails
- Manual cockpit mounted Whale MK5 bilge pump
- Drink holders in cockpit
- Gasketed cockpit seat hatches
- Retracting swim platform with swim ladder
- Hot/cold swim platform shower
- Nova lift outboard lifting davit
- Dinghy davits off stern
- Dinghy outboard bracket

- Stern mounted fish cleaning table
- 200 Ft 5/16 anchor chain & 200' 5/8" rode
- 55 Lb Rocna anchor
- 22 Lb Danforth anchor with 65' 5/16 chain and 250' rode
- Spar Fly wind vane
- Radar reflector mounted above spreader
- Pedestal cover
- (3) Hatch covers
- Dodger and Bimini new in 2013 with zip in sun screens
- Propane barbecue
- Revere 6 man life raft with fabric cover and automatic release system
- Bow awning and boom tent
- Cockpit cushions
- Cockpit table with extension

Accommodations & Storage

Both cabins have large berths. In the forward cabin in addition to the large "V" berth there is a convenient vanity with hot/cold running water and a great mirror. There is abundant storage. In the aft cabin there is a hanging locker, drawers and cabinets. There is direct access to the head from the aft cabin. The head can also be accessed from the saloon just aft of the nav station.

The saloon has two large settees, one to port and the other to starboard. In the center is a permanently mounted table with a storage bin and drawers in the base. The table has two leaves that fold away. Surrounding the saloon are storage lockers and a libation cabinet fitted with slots and shelves for bottles.

The forward facing nav station is at the base of the companionway to starboard. There is storage below the desk and drawers in the base. There is a lot of room to mount additional electronics. Currently there is an Icom VHF and radio/stereo along with electric panels.

- Forward cabin with vanity and sink, extensive lockers, hanging locker, dovetail drawers and large storage below "V" berth
- Approximately 80" x 60" "V" berth in forward cabin with quilted mattress
- Vertical built in chart storage on bulkhead in forward cabin
- All hanging lockers are cedar lined
- Furniture grade main cabin settees and seats with contoured cushions
- Main cabin fitted with cherry cabinets and ventilated raised panel doors throughout
- (6) Custom made area rugs
- Though bulkhead raised panel ventilation door to forward cabin
- Large storage out board of main cabin seat backs
- Varnished large drop leaf solid stock cherry table with center storage bin and two dovetail drawers
- Forward facing navigation station at bottom of companionway to starboard

- Navigation lockers with installation space for extensive electronics
- Aft cabin with a full width 88" x 63" double berth with hanging locker and shelves.
- Storage below berths
- Peek-A-Boo port light shades in aft cabin
- Cockpit seat locker to starboard with access to water-maker
- Cockpit lazette hatches port and starboard
- Propane gas bottle storage in cockpit for (2) 11 lb tanks

Spar & Rigging

A carbon fiber mast keeps the center of gravity as low as possible. The Forespar Liesure Furl in boom main sail furling system creates infinite reef points and allows full length battens. It also allows raising, lowering and reefing the main from the cockpit. Harken roller furling allows you to deploy the genoa from the cockpit.

Mast

- Novis Composites carbon-fiber mast
- White AwlGrip coated double spreader design
- Tapered mast section for reduced wieght aloft
- Tapered airfoil swept spreaders
- Custom designed aluminum masthead with sheaves for 2 headsail halyards, 2 main halyards and spinnaker crane
- 1 x 19 Stainless steel wire rigging with forged turnbuckles
- Internal halyards
- Mast to deck tie rod to carry running riging loads
- Custom designed stainless steel chainplate system ties to extensive internal FRP structure and hull
- Masthead anchor light (LED)
- Steaming light with foredeck illuminator
- Mast wiring conduit
- Spartite mast sealing and chock system

Boom

- Forespar Liesure Furl boom
- Forespar hard boom vang with spare spring

Running Rigging

- (1) Low stretch genoa halyard
- (1) Low stretch main halyard
- (1) spare jib halyard
- (2) Dacron genoa sheets
- (1) Dacron mainsheet
- (2) Main traveler taglines

- (2) Adjustable genoa track lead taglines led to cockpit
- Harken roller furling for Genoa

Hull

- NPG Isothalic gelcoat
- Epoxy hull laminate
- CoreCell linear polyurethane foam hull coring
- Hull built to meet ABS Plan Certification
- 15 year non-prorated hull structural and blister transferable warranty

Deck

- Deck is a balanced composite laminate utilizing vinylester resin, uni-directional "E" -glass reinforcement, and high strength/stiffness Baltek premium AL 600 balsa coring
- Deck is locally reinforced at high load areas with additional plies of bi-directional "E" glass reinforcement.
- NPG Isothalic gelcoat
- Patterned molded non-skid surface on horizontal deck areas
- Core "windows" at all deck hardware installations. Window is reinforced with solid laminate and isolates hardware installations from core laminate, reducing stress crazes around hardware often seen in laminate reinforced with plywood and eliminates rot problems associated with decks reinforced with plywood.
- Structurally loaded hardware backed with either FRP or 6061 T6 aluminum backing plates
- Deck to hull joint bonded with 3M 5200 adhesive sealant
- Deck is fastened to inward facing hull flange with integrally molded hardened 6061 T6 aluminum bar forming a sheer length backing plate.
- Stainless steel fasteners sized to meet or exceed ABS standard for offshore use, are drilled and tapped into aluminum bar, offering full serviceability from the outside of the boat

Rudder & Steering System

- Console style rack and pinion steering pedestal
- 40" leather deerskin wrapped stainless steel wheel
- Stainless steel pedestal guard
- Single lever engine control with stainless steel handle mounted on pedestal
- 6" binnacle compass with stainless steel hood
- High density, closed cell urethane foam rudder blade with modified epoxy reinforced skins
- 4' diameter 1/2" wall thickness type 304 stainless steel rudder post
- High-density, low-friction rudder bearings
- Bronze rudder stuffing box

Engine & Mechanical

The engine and generator are easily accessed from all sides. Primary access to the generator is from the aft cabin. The primary access to the engine is from the companionway steps. The Racor filters are located in the lazarette. The batteries are located under the aft cabin berth.

- 55HP Volvo diesel with pedestal mount single lever controls
- Pedestal mount engine instruments
- 60 Gallon fiberglass fuel tank with remote gauge
- Racor fuel filter water separator (one each for main engine and generator)
- Algae-X (one each for main engine and generator)
- Reverso built in oil change pump
- Lead lined engine compartment insulation
- Excellent engine service access front, sides and aft
- 3 blade Maxi Prop
- New spare 3 blade fixed prop
- New 3 blade fixed prop
- Stainless steel shaft
- Drip-less stuffing box
- Cruisair air-conditioning in all cabins with digital control

Keel Details

Keel Type: Centerboard

Ballast: 8600 lb Displacement: 21000 sq ft Draft Board Up: 4' 7" Draft Board Down 8'

Ventilation

- (5) Stainless steel unlimited offshore CE approved deck hatches
- (12) Cabin side mounted stainless steel opening port lights with fly screen
- (3) Cockpit mounted stainless steel opening port lights with fly screens
- (2) 4" Chrome Dorade vents with stainless steel guards
- Lexan sliding companionway hatch with fiberglass spray hood, solid teak hatch boards and trim and custom canvas curtain in place of hatch boards when occupying the cabin
- Many fans throughout the cabin

Electrical

- 6 KVA Nextgen generator with high flow vent system
- (2) 8D AGM house batteries (July 2012)
- (1) Size 27 AGM starting battery (2007)
- Xantrax battery monitor
- Galvanic isolator
- 105 Amp hour Charles battery charger
- Sun Force 300 watt solar panel with regulator

- Polished chrome and stainless steel interior LED lighting
- Directional spot lights above cabin table (Halogen)
- Automatic lights in hanging locker, liquor locker and refrigerator.
- Service lighting in engine compartment
- Service lighting in cockpit lockers
- Interior red courtesy lights
- Cockpit and swim platform courtesy lighting
- Dual 30 AMP shore power services
- 110 VAC distribution panel
- 110 VAC outlets in each cabin, GFI protected
- 12 VDC metered deistribution panel
- Battery selector switch
- Electrical bonding system
- Electric sump pump with automatic float switch for ice box and shower drains
- Electric bilge pump with automatic float switch with manual override
- UL approved, stranded, tinned copper wiring
- Wiring bundled in PVC conduit with additional donduit in place and available for future installations
- ABYC color coded wiring throughout
- USCG approved LED navigation lights on bow rail, stern rail and mast
- LED anchor light
- (3) Cabin fans

Galley & Plumbing

Ideally located at the bottom of the companionway the galley is laid out with great leaning spots and all areas are an easy reach making food preparation easier when at sea. The large freezer and refrigerator have additional insulation. The freezer is accessed from the top and the refrigerator can be accessed from both the top and front. The gimbaleed propane fueled stove/oven has three burners and a broiler. Conveniently located next to the sinks is a tilt out trash container. Storage in the galley is abundant.

- 3 Burner Force 10 gimbaleed LPG stove with oven and broiler
- (2) 11 Lb. LPG Tanks (located in dedicated locker outside cockpit)
- LPG sniffer with automatic shut off
- Cheery faced cabinetry with raised panels access doors
- Cherry faced, dovetailed cutlery drawers
- 9" deep stainless steel double sinks with marine grade galley faucet and manual foot pump with swivel spigot
- Granicore solid surface galley counter tops
- Storage under galley sink through ventilated raised panel cherry doors
- Hinge out galley trash bin with cherry raised panel door access
- Molded icebox with Granicore solid surface counter top and 4" foam insulation, insulated front and top load access plus additional custom hard surface insulation on the interior surfaces

- Sea Frost refrigeration/freezer with added special insulation
- Hot and cold pressure water
- Freshwater plumbing features polyethylene tubing and Whale mechanical fittings
- HRO water-maker 15 GPH (New membrane March 2013)
- 100 Gallons of freshwater tankage with distribution manifold
- Forward cabin vanity with sink, hot/cold water and Granicore solid surface counter top
- 11 Gallon water heater with engine heat exchange and 110 VAC

Head

Located aft of the nav station and adjacent to the aft cabin the large and roomy head has a nearly full length mirror. The shower stall when in use can be separated for the head with a Lexan panel that folds out from the wall. A wet locker is outboard from the shower.

- Jabsco marine head with 20 gallon holding tank with deck pump out and vent
- Y-valve with direct overboard discharge for offshore use
- Macerator pump for holding tank discharge for offshore use
- Snake river holding tank remote level indicator
- Separate stall shower with Plexiglas enclosure, molded seat and teak floor grate
- Full length mirror
- Shower drains to separate sump with automatic electric pump for overboard discharge
- Molded Granicore solid surface counter tops with integral sink
- Utility storage under sink through raised panel cherry door
- Hanging wet locker outboard of shower seat

Electronics

Navigation

- Raymarine C-120 12" Chart-plotter/Radar display
- Raymarine Tri-data
- Raymarine wind speed display
- Raymarine Autohelm autopilot
- ACR Global Fix Pro 406 MHz GPS Epirb
- Icom VHF at nav station with remote at helm

Entertainment

- JBL marine stereo radio with CD player and Sirius XM (speakers in salon and cockpit)
- Audiovox 19" Flat screen TV with built in DVD Player

Основная информация

Тип судна: Cruising/Racing Sailboat

Подкатегория: Sloop

Модельный год: 2007

Год постройки: 2007

Страна: United States

Верх: Bimini Top

Размеры

Длина общая: 14' 0" (4.27m)

Размещение

Всего кают: 2

Всего коек: 4

Спальные места: 6

Всего ком. состава: 1

Корпус и палуба

Материал корпуса: Fiberglass

Комплектация корпуса: Centerboard

Информация о двигателе

Двигатели: 1

Производитель: Volvo

Тип двигателя: Inboard

Тип топлива: Diesel

ФОТОГРАФИИ

41 Tartan



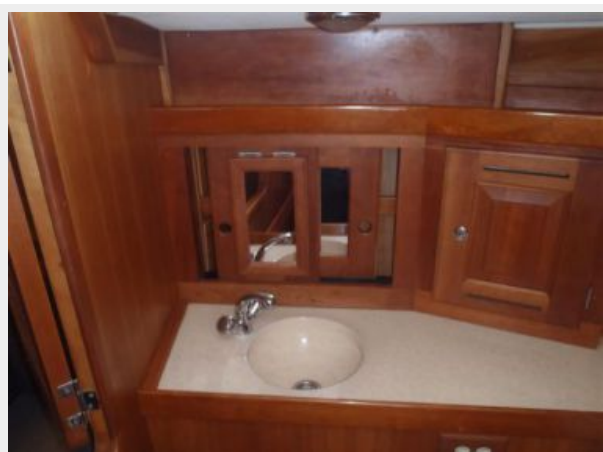
41 Tartan Layout

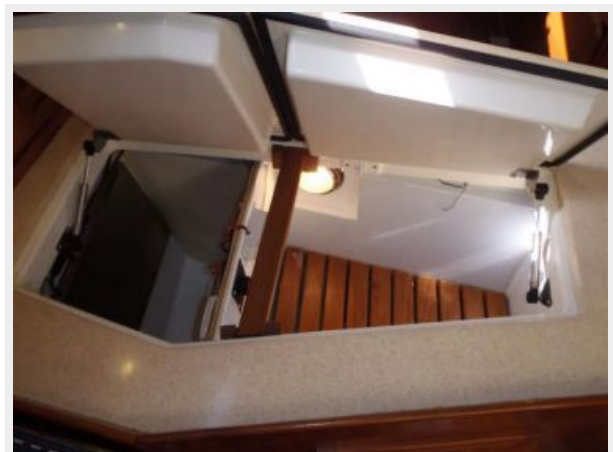
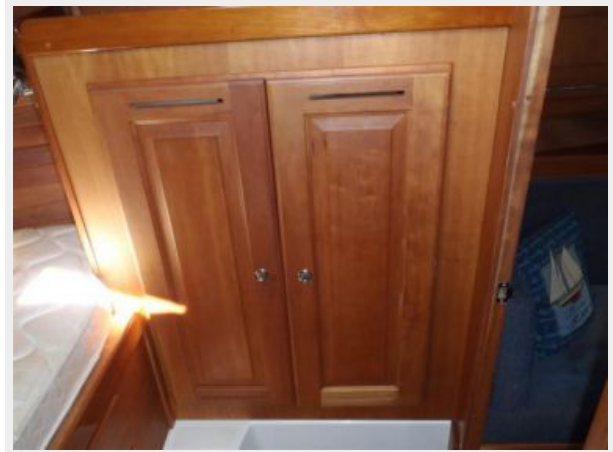


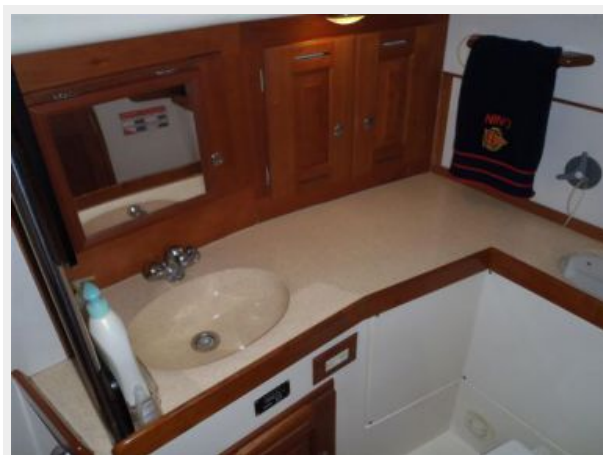
41 Tartan Line Drawing





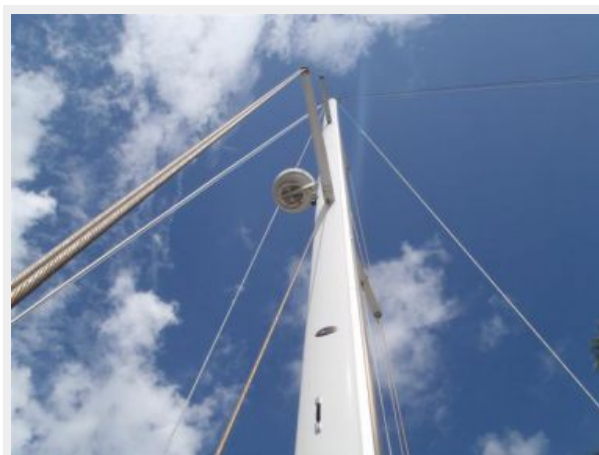
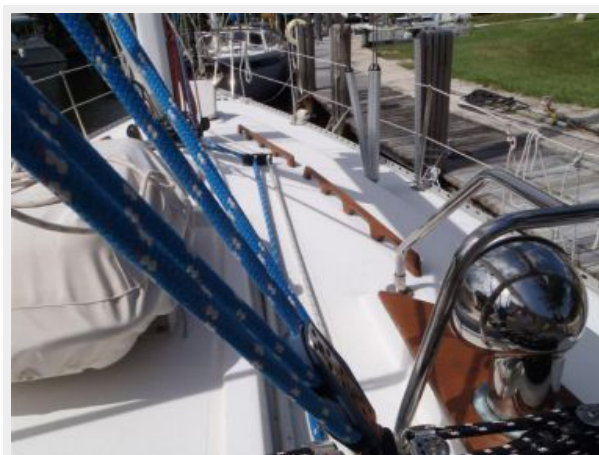


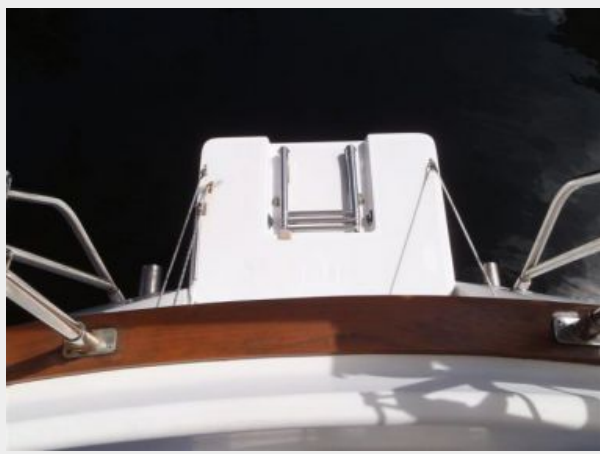


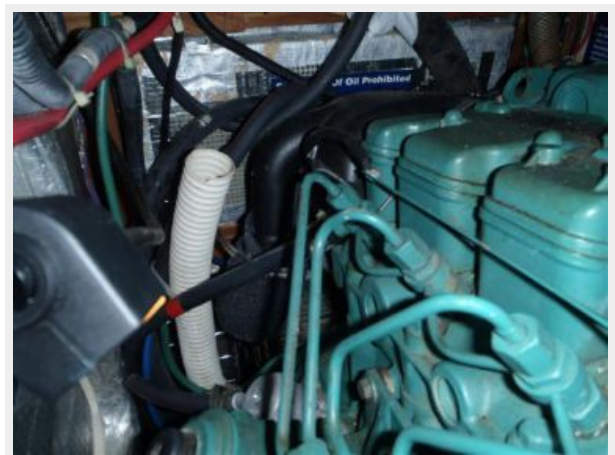
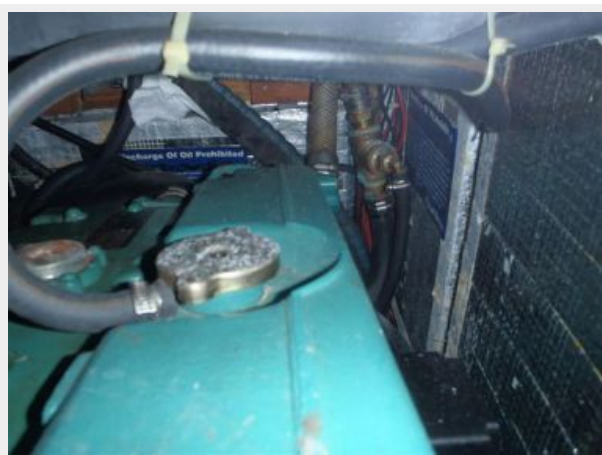




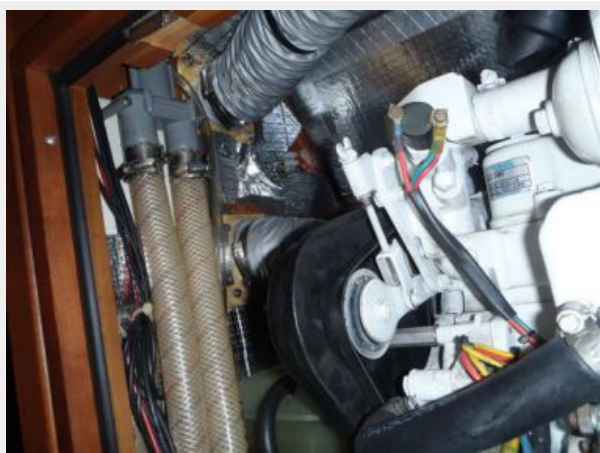












КОНТАКТЫ

Андрей Шестаков (Andrey Shestakov) – ведущий яхтенный брокер отдела продаж яхт и судов компании Shestakov Yacht Sales Inc. Официальный представитель Shestakov Yacht Sales Inc. для русскоговорящих клиентов в центральном офисе компании в Майами/Форт Лодердейл/Флорида/США.

Контактная информация

Email: andrey@shestakovyachtsales.com

Web: shestakovyachtsales.com

Телефоны

Краснодарский край: **+7(918)465-66-44**

США, Майами, Флорида: **+1(954)274-4435**

Время работы

Понедельник – Суббота: **9:00 - 21:00**
EDT

Воскресенье: **Закрето**

Адрес



Harbour Towne Marina, 850 NE 3rd St,
STE 213, Dania, FL 33004