

## SHORE GIRL — WEST BAY



**Судостроитель:** WEST BAY

**Год постройки:** 2003

**Модель:** Моторная яхта

**Цена:** **ЦЕНА ЯХТЫ ПО ЗАПРОСУ**

**Местонахождение:** United States

**Длина общая:** 92' 0" (28.04m)

**Ширина:** 20' 0" (6.10m)

**Макс. осадка:** 5' 6" (1.68m)

**Крейс. скорость:** 20 Kts. (23 MPH)

**Макс. скорость:** 23 Kts. (26 MPH)

Купить **SHORE GIRL — WEST BAY** а также выбрать подходящую вам яхту из нашего каталога яхт вам поможет опытный яхтенный брокер Андрей Шестаков. На сегодняшний день компания **Shestakov Yacht Sales Inc.** имеет большое количество яхт в собственном списке продаж, а также тесно сотрудничает со всеми крупными яхтенными производителями по всему миру.

Для того чтобы купить яхту **SHORE GIRL — WEST BAY** а также проконсультироваться по любому вопросу связанному с покупкой, продажей, чартером яхт позвоните по телефону **+7(918)465-66-44**.

# ОГЛАВЛЕНИЕ

ОГЛАВЛЕНИЕ	2
ХАРАКТЕРИСТИКИ	6
Основная информация	6
Размеры	6
Скорость, вместимость и масса	6
Размещение	6
Корпус и палуба	7
Информация о двигателе	7
ПОДРОБНОЕ ОПИСАНИЕ	8
Accommodations	8
Boat Deck	8
Tender	9
Flybridge	10
Flybridge Electronics	11
Pilothouse	11
Pilothouse Electronics	12
Companionway Pilothouse / Galley	13
Galley	14
Main Salon	15
Aft Deck (10')	15
Master Stateroom	16
Master Head	17
Sitting room / Conv. 4th Stateroom	18
VIP Stateroom	18
Port Guest Stateroom	19
Laundry Room	20
Lower Guest Companionway	20
Crew Quarters	20

Cockpit (4')	22
Swim Platform (3')	22
Fore Decks / Side Decks	23
Mechanical System	23
Electrical System	25
Head System	26
Air Conditioning System	26
Remarks	26
Exclusions	26
Disclaimer	26
Исключения	27
Отказ от ответственности	27
<b>ФОТОГРАФИИ</b>	<b>28</b>
Foredeck	28
Foredeck	28
Flybridge	28
Flybridge	28
Flybridge	28
Flybridge	28
Flybridge / Wet Bar	29
Pilothouse	29
Pilothouse	29
Pilothouse raised Dinette	29
Pilothouse raised Dinette	29
Galley	29
Galley	30
Galley	30
Galley	30
Main Salon	30

---

Main Salon	30
Main Salon	30
Main Salon	31
Main Salon	31
Aft Deck	31
Aft Deck	31
Aft Deck	31
Aft Deck	31
Aft Deck	32
Aft Deck	32
Master Stateroom	32
Master Stateroom	32
Master Stateroom	32
Master Stateroom	32
Master Stateroom	33
Master Stateroom	33
Den / Convertible 4th Stateroom	33
Den / Convertible 4th Stateroom	33
Den / Convertible 4th Stateroom	33
Den - Convertible 4th Stateroom	33
Master Bath	34
Master Bath	34
Master Bath Vanity	34
VIP Stateroom	34
VIP Stateroom	34
VIP Stateroom	34
VIP Stateroom	35
VIP Head	35
VIP Head	35

---

---

Guest Stateroom	35
Guest Stateroom	35
Guest Gead	35
Guest Gead	36
Laundry Room	36
Laundry Room	36
Crew quarters	36
Crew Workshop	36
Crew head	36
Control panel / Watertight door to engine room	37
Engines	37
Engines	37
Side Deck	37
Stern	37
Cockpit / Swim Platform	37
Tender	38
Tender	38
Layout	38
<b>КОНТАКТЫ</b>	<b>39</b>
Контактная информация	39
Телефоны	39
Время работы	39
Адрес	39

# ХАРАКТЕРИСТИКИ

## Основная информация

Тип судна: Моторная яхта	Подкатегория: Кубрик
Модельный год: 2003	Год постройки: 2003
Страна: United States	Верх: Hardtop
Открытая палуба мостика: Да	Кубрик: Да

## Размеры

Длина общая: 92' 0" (28.04m)	Ширина: 20' 0" (6.10m)
Макс. осадка: 5' 6" (1.68m)	

## Скорость, вместимость и масса

Крейс. скорость: 20 Kts. (23 MPH)	Дальность на крейсерской скорости: 1200
Макс. скорость: 23 Kts. (26 MPH)	Водоизмещение: 150000 Pounds
Чистый вес: 75 Pounds	Вместимость воды: 600 Gallons
Вместимость сточного бака: 200 Gallons	Объем топливного бака: 3000 Gallons

## Размещение

Всего кают: 4	Спальные места: 7
Всего ком. состава: 4	Каюты экипажа: 2
Койки экипажа: 2	

## Корпус и палуба

---

**Материал корпуса:** Fiberglass

**Материал палубы:** Teak

**Комплектация корпуса:** Modified V-Hull

**Цвет корпуса:** White

**Отделка корпуса:** Plastic

**Дизайнер корпуса:** Westbay

**Дизайнер экстерьера:** West Bay/Sonship **Дизайнер интерьера:** Paula Devon Raso

## Информация о двигателе

---

**Двигатели:** 2

**Производитель:** Caterpillar

**Модель:** 3412E

**Тип двигателя:** Inboard

**Тип топлива:** Diesel

---

# ПОДРОБНОЕ ОПИСАНИЕ

---

## Accommodations

---

“SHORE GIRL” accommodates 8 guests in 4 staterooms. The crew accommodations include 2 berths. Headroom: 6’8”

Featuring:

- Full walk-around decks
- Large all-weather pilothouse with 360 degree visibility
- Up, open galley
- Raised U-shaped Dinette
- Stairwell to flybridge
- Comfortable Main Salon with 42” pop-up TV
- Casual Aft Deck, enclosed with air conditioning, with access to cockpit, swim step, entrance to aft crew quarters and engine room
- Guest accommodations forward with forward VIP stateroom, 2 guest staterooms, mid-ship’s Master with king berth
- Flybridge with custom factory hardtop with enclosure; custom bar with grill, sink and refrigerator
- Boat deck with additional storage
- Davit
- 16’ Whaler

## Boat Deck

---

- Fiberglass non-skid deck
- Davit - Steelhead Marine SM3000 R Davit with hydraulic boom, extension and rotation with PTO off main engine
- Two (2) 110V quartz flood lights
- Custom fiberglass cabinet 81” x 31” x 39” with 115V outlet, GFI protector and waterproof cover
- Fresh water down



- Additional storage
- Large Frigidaire heavy duty commercial top load freezer in custom fiberglass locker
- Fiberglass cabinet, starboard, with storage below
- Life raft / Revere (6) man canister certified until Sept / 2018 • Grill - LP gas Dynamic Cooking Systems 27" x 20" stainless steel grill with hood, vented propane tank cabinet, Fireboy S-2A propane fume detector, under-counter

## Tender

---

- **16'** Boston Whaler 2004 Dauntless model with **115 hp** Johnson E Tech - New April 2015 with trim and tilt, stainless steel prop, fresh water flush • Bimini Top with stainless steel frame & boot cover
- Center console with windshield, stainless steel grab rail, and storage below
- Built-in rod holders
- Stainless steel bow rail, port and starboard safety rails, stainless steel bow anchor roller
- (5) Five, 6" stainless steel mooring cleats
- Bow seat with cushion and storage below
- 2-person Helm seat with cushion, storage below
- Reversible port and starboard aft seats with cushions, backrests and storage below
- Poly Planar CD player with two (2) speakers
- (4) built-in drink holders
- Lift Bridle • Removable stainless steel deck chock with tie downs
- 35 Gallon fuel tank with deck fill • Removable polished stainless steel 1 1/2 " Euro style safety hoop rails around boat deck • Port & Starboard name lights • Tender cover • Cushions New April 2015

### Tender Instruments

- Tachometer
- Oil pressure
- Voltmeter

- Fuel gauge
- Navigation lights
- Horn
- Auto/manual bilge pump
- 12V accessory plug-in
- VHF Icom ICM302 with antenna
- Ritchie magnetic compass
- Garmin 188c / Sounder / GPS chart

## Flybridge

---

- **Headroom 6' 10"** • Tinted Venturi-style Lexan windshield with 1 3/8" polished stainless steel frame
- Factory custom fiberglass hard top with built-in courtesy down lights
- (2) 20" x 20" opening tinted ventilation hatches with retractable screens and sun block-out shade
- Custom electronics mast
- Custom Barrett polycarbonate 4-side enclosure
- Teak decking
- Centerline helm with leather helm and companion seats with armrest, fore and aft slides, swivel on helm and companion set and built-in polished stainless steel footrest
- 115V receptacle with GFI protector and waterproof cover
- (3) 2" flush deck drains with brass chrome grates
- Large built-in seating to port, with storage below, cushions & covers. Seats 11-12 people with fixed dining for seven; table with Corian top
- Custom wet bar with matching Corian countertop with Ice Cooler with drain
- U-Line refrigerator with icemaker and vented cabinet door
- Stainless steel sink with hot & cold faucet

- Polished stainless steel child gate with 3/8" Lexan inner panel
- Access hatch from Pilothouse to Flybridge with lift shocks, polished stainless steel grab rails and retractable roll- up screen

## Flybridge Electronics

---

- ACR EPIRB with holder ( Expires May 2020)
- Icom/IC-M502 VHF with lower helm full command mic
- Simrad AP20 full station Autopilot
- AIS / Furuno FA - 150 with cover
- ACR / RCL-100 Searchlight
- Ritchie 3" Magnetic Compass
- Furuno NavNet C-Map Chart Plotter with 10" screen & CNav 15" flat screen monitor for Nobeltec
- Radar – 64 mile with 4' open Array antenna
- Trim tab controls
- 20" Stainless steel destroyer style wheel with power assist
- Wesmar Stabilizer control
- Alpine CDA-7892 AM/FM Stereo with CD player; 4 Alpine speakers in water-proof cover
- Bow and stern thruster controls
- Kobelt Single lever clutch and throttles with synchronizer, trolling mode, throttle over-ride
- Main engine start and stops
- 12V Receptacle
- Buell dual trumpet air horns • Cat Electronic engine monitors with cover • Satellite TV KVH HD7 New 2013 • **Note:** All TV's work on digital Only

## Pilothouse

---

Access stairwell to owner's and guest staterooms with retractable child gate; additional sound insulation in sole

- Centerline helm station with chart flat
- Chart drawers
- Access to under helm
- 24' polished stainless steel custom wheel with hydraulic steering with power assist
- Stidd Helm and companion seats with arm & footrests, and polished stainless steel bases, power up/down slide
- Panograph Port and starboard pilothouse doors with retractable screens
- Overhead Halogen down lights on dimmers
- Upgraded decorator tile flooring 2013
- Raised U-shaped Dinette /settee with custom honed marble top; storage drawers below center dinette, with additional storage below settee and storage drawers. Dinette will comfortably accommodate 7-8 guests or dining, offering an excellent observation area while cruising
- Windshield cover / black textaline • Hand remote with clutches, bow and stern thruster ( Kobelt) with 16' cord

## Pilothouse Electronics

---

All electronics and gauges are well organized to be monitored at an eye's glance while cruising from this all-weather helm station.

- Furuno 96 mile FR-2125 BB radar with 18" flat screen monitor and 6' open Array antenna • Furuno NavNet FR-1943C radar, 64 mile with ARPA, 10" screen and 4' open Array antenna
- NavNet Color Chart Depth Sounder
- Furuno GP36 DGP3 GPS
- GPS Furuno / Waas GP - 32
- Simrad AP20 Autopilot, interfaced with chart system • Chart screen monitors (2) 17" with Noboltec + C- MAP • VHF ICOM IC - M604
- Icom IC-M127 with remote microphone, hailer, DSC

- Azimuth 1000 Digital Flux Gate compass
- Simrad 1S15 Windspeed / Direction
- Depth finder Digital/ Raymarine
- Wesmar Digital Stabilizer control
- 24V / 12V DC panel
- Kobelt Single lever clutch / throttles with synchronizer
- (5) Windshield wipers with 35" wiper blades, washers and delay
- (3) Windshield defoggers, center windshields
- (2) overhead Helm lights on dimmers
- ACR / RCL-100 Searchlight with remote on bridge
- Trim tabs
- Alarms: bilge, fire, exhaust temperature
- Bow and stern thruster controls
- Anchor windlass control with remote "up and down"
- Tank tender for fuel and water
- Chart light
- 115V outlet with phone plug-in
- Caterpillar electronic Engine monitors
- 12V chart light receptacle • CCTV Monitor (2) engine room cameras (1) Starboard aft overhang with Pan & Zoom

---

## Companionway Pilothouse / Galley

---

- 24V / 12V / 120V electrical panels
- Remote start: generators, with gauge package, oil pressure, water temp, volt meter, hour meter, water makers and inverter.
- China locker, all pegged
- Glass and crystal locker with holders • U-Line under-counter wine cooler, approximate 30-bottle

## capacity

- Additional storage with upper and lower shelves
- Custom cabinet with buffet height matching marble counter top and matching mahogany cabinet doors
- 7-step stairwell to flybridge with retractable child / dog gate at stairwell base
- All pilothouse / galley windows tinted with custom matching mahogany blinds

## Galley

---

Galley is up and open on the Main deck with 360 degree visibility. Truly a galley the party can end up in! • **Headroom 7' 3"**

- Matching Italian marble counter tops
- Sub-Zero Refrigerator over/under refrigerator and freezer, New 2013
- Convection microwave - Dacor stainless steel, New 2013
- Bosch Dishwasher with matching mahogany face
- Dacor 5-burner gas cook top stove with overhead lighting and exhaust fan
- Kitchen Aid Trash stainless steel compactor with mahogany face panel
- Dacor Warming drawer
- (2) Sub-Zero Freezer drawers with matched mahogany face panels
- Kindred single stainless steel sink with garbage disposal
- Grohe single faucet with pullout sprayer, Insta hot & cold spigot
- Spice drawer
- Pantry with lazy Susan and swing door
- (2) matching barstools with backrests
- Buffet serving area
- Additional acoustic insulation in galley sole
- Ample over / under counter storage
- Overhead and under cabinet Halogen lighting on dimmers • Privacy Blinds / Hunter Douglas,

---

New 2013

## Main Salon

---

Located two steps down from galley / pilothouse. The Main Salon is very traditional with its rich classic mahogany paneling combined with subtle fabrics and comfortable furniture arrangement. Truly a relaxing atmosphere!

- **Headroom 6' 8"** • Large port and starboard windows with privacy shades/ Hunter Douglas , New 2013
- **Upgraded headliner, New 2015** with Halogen down lighting on dimmers • Crown molding with indirect lighting
- Open access to galley and pilothouse
- Entertainment center with Denon AM/FM receiver with speaker selection
- Denon 5-disc audio / video DVD system with surround sound
- Panasonic VHS player
- Speaker craft / select speaker amplifier
- Built-in DVD / VHS and CD drawers
- Sony 42" NEC plasma pop-up TV with DSS receiver
- Custom decorator tile flooring with decorator area rug
- Custom sofa, down wrapped with custom fabric, and decorator pillows to port
- (2) matching rattan stools
- Access through double mahogany framed glass doors from Aft Deck

## Aft Deck (10')

---

The Aft Deck is quiet, comfortable, features large windows for a great open feeling and flows very nicely with the Main Deck for entertaining.

- **Headroom 6' 8"** • Enclosed aft deck with air conditioning
- Port and starboard polished stainless steel framed glass doors with retractable screens
- Custom Decorator tile flooring 2013

- Custom full-width sofa with decorator pillows
- Custom 66" x 27" oval mahogany dining table with polished stainless steel bases and electric Hi/lo option, with (2) custom matching stools. Comfortable casual dining table for 6 people, Glass protector.
- (2) matching occasional chairs
- Overhead with Halogen down lights on dimmers • (1) reading lamp
- Full height entertainment center with 42" NEC Plasma TV with Sony DSS receiver, surround sound, Denon AM/FM stereo receiver
- Panasonic VHS/DVD player, speaker craft / select speaker amplifier
- Built-in U-Line under counter refrigerator with overhead CD/DVD bookshelves with Sea Rails
- Built-in aft deck hanging wet locker, port
- Storage lockers, built-in book/magazine racks with sea rails
- Folding cabinet doors for entertainment center • Cabin doors separating salon & aft deck Mahogany Frames with Inner glass panels

## Master Stateroom

---

Located amidships with additional acoustic sound insulation in ceiling

- **Headroom 6' 6"** • Center line California King berth (7'2" x 6' 7") with drawers below
- Custom fitted bedding
- Custom fabric headboard and footboard
- His / Hers overhead Halogen reading lights
- Port and Starboard polished stainless steel opening port lights with privacy covers
- Trident Digital Safe in closet
- Overhead Halogen down lights on dimmers
- Built-in 12-drawer dresser with overhead Halogen lights, Port side
- Built-in dressing table with drawers, mirror, chair and overhead Halogen lights
- Soffit with indirect rope lighting



- Berth with indirect base rope lighting
- Built-in Vimar digital alarm clock
- Bedside remote generator start / stop
- Built-in Furuno NavNet 6" monitor
- Panasonic intercom / phone
- Digital CruisAir air-conditioner control
- Panasonic 27" flat screen color TV with remote control, VHS, DVD, CD players Denon 3-disc changer, AM/FM stereo, Sony DSS receiver
- Storage cabinet below entertainment center
- Beveled 26" x 40" mirror with classic gold frame
- Custom lacquered built-ins

## Master Head

---

Located ensuite, forward, to port

- **Headroom 6' 5"** • His / Hers sinks with marble counter tops
- His / Hers mirrors with medicine cabinets
- Overhead Halogen lighting
- Ample under counter drawers and lockers
- Large linen locker
- Heated mosaic tile floor
- Exhaust fan
- Myson heated towel bar for (5) towels
- Tub with marble shelf, mosaic walls, glass folding door
- Steam shower
- 8" Stereo speakers with volume control
- HeadHunter fresh water head

- Tank watch holding tank level monitor

---

## Sitting room / Conv. 4th Stateroom

---

- Incorporated into the Master Stateroom with Shoji screen style sliding privacy doors • **Headroom 6' 6"** • "L" configured sofa with drawers below & converts into double berth 70" L x 54" W • Headliner with Halogen down lights on dimmer switch • Air conditioning control • Book case with 17" flat screen television and sea rails • Mahogany tri-stack end tables • Bulkhead sconce lighting with art work • (1) opening port light • Access from hallway through sliding pocket door

---

## VIP Stateroom

---

Located forward • **Headroom 6' 7"** • Queen berth on centerline with upholstered headboard and footboard, with drawer below

- Port and starboard reading lamps with dimmers
- (2) opening ventilation hatches with screen and blackout covers
- Alpine AM/FM stereo with CD player and (2) 6" speakers
- Toshiba 20" color TV with remote control, built-in on pull out swivel platform
- Toshiba VHS/DVD player
- Digital Air-conditioning control
- Cedar-lined hanging locker, to port
- Panasonic intercom / phone
- Built-in Vimar digital alarm clock
- Dresser drawers below entertainment center, starboard
- Overhead Halogen lighting on dimmers
- Indirect rope lighting

## VIP Guest Head, Ensuite

- Sink with limestone counter top
- Port light opening, polished stainless steel with black out cover

- HeadHunter freshwater head
- Stall shower with glass enclosure
- Mirror with beveled edge and polished stainless steel frame
- Overhead with Halogen down lights
- Medicine cabinet with under counter drawers
- Indirect rope lighting

## Port Guest Stateroom

---

Located port, forward • **Headroom 6' 6"**

- "L" berth arrangement // Lower Berth: 7' x 54" W // Upper Berth: 7'4" L x 38" W
- Single upper berth with hanging locker below
- Port light opening, polished stainless steel with black out cover
- Reading lamp
- Double lower berth with reading lamps and drawers below
- Built-in night stand
- Built-in Vimar digital alarm clock
- Overhead Halogen lighting on dimmers
- Digital Air-conditioning control
- Indirect rope lighting

### Guest Head, Ensuite

- Sink with marble countertop
- Exhaust fan
- Mirror
- Stall shower with glass door
- HeadHunter fresh water head
- Air-conditioner duct

- Ample locker and linen storage
- Heated floor

---

## Laundry Room

---

Located on lower deck, starboard

- Fisher and Paykel washer / dryer, household size units
- Overhead storage lockers
- Under-counter storage and cloth hamper
- Under-cabinet lighting
- Indirect rope lighting
- Overhead Halogen lighting
- Custom Vinyl Flooring 2015

---

## Lower Guest Companionway

---

- Large built-in linen locker
- Halogen overhead lighting
- Access hatches to bilge
- Central Vac outlet

---

## Crew Quarters

---

- **Headroom 6' 5"** • Access through cockpit Freeman Watertight door
- Companion way with clean supplies locker with cabinets and pull-out storage bins
- AC/DC panels / ship's alarm panel
- Captain / Crew cabin to port
- Upper and lower berths with drawers below lower berth and reading lamps • Crew berths 6'6" L x 32" W

- Opening port light with privacy cover
- Overhead halogen down lights on Dimers
- Built-in (4) drawer dresser
- Hanging locker
- Toshiba entertainment center, 15" color remote TV with VHS / DVD player
- Sony DSS satellite receiver
- Panasonic phone / intercom system
- Vimar built-in digital alarm clock
- Privacy door
- Ensuite head with stall shower
- VacuFlush freshwater head
- Sink with mirrored medicine cabinet
- Exhaust fan
- Access to cable master and ship's systems

### **Captain's Office / Workshop**

- Built-in (6) drawer tool chest
- Over counter storage lockers
- G.E. Sensor built-in microwave
- U-Line Refrigerator built-in under counter
- (2) opening port lights with privacy covers
- Captain's desk with (2) built-in file drawers
- Built-in manuals bookshelf with sea rails
- Access to stern lazarette
- NavNet 6.5" monitor
- Overhead halogen down lights • Stainless steel work bench counter top

---

## Cockpit (4')

---

- Teak sole
- (2) 8" pop-up cleats on covering boards
- Transom gate door with dead bolt and latch
- Port and starboard 35" polished stainless steel grab rails
- Flush mounted Aquatic hot and cold fresh water shower with sprayer
- Gas tank – 40 gallon painted aluminum with flush fill, gas gauge, 24V pump and 25' fill hose
- Dockside water fill
- Cable master with 75' x 100 AMP cord
- Cable master with 75' x 50 AMP cord
- Cable TV / Phone inlet with 50' cord
- Built-in live well
- Transom and hull side hauses
- Transom door – Freeman Watertight Pantograph door
- Coaming lights
- (4) under-coaming J-hooks for ropes
- Port and starboard heavy duty stainless steel towing/mooring cleats with rope guide rollers
- (2) quartz flood lights located on boat deck overhang

---

## Swim Platform (3')

---

- Teak
- (2) 10" pop-up stainless steel cleats and stainless steel rub rail
- (5) Euro-style removable staple rails with additional storage holder in deck
- Removable 4-step polished stainless steel swim ladder • 6' TNT fiberglass non skid hydraulic swim platform with stainless steel rub rail

---

## Fore Decks / Side Decks

---

- Fiberglass with diamond pattern non-skid
- Bow pulpit with Manson 150 lb. plow-style polished stainless steel anchor and 400' x 1/2" galvanized chain
- Muir Atlantic 4,000 lb. Windlass with chain / Hydraulic
- Wildcat hydraulic with PTO off main engines
- Chain locker with light, fresh and seawater wash downs, pressure wash
- (2) 12" cleats with chafe guards
- Bow rail – 1" polished stainless steel
- Bow flagstaff – 25" polished stainless steel
- Side decks / catwalks – teak decks from pilothouse aft with overhangs, raised bulwarks with courtesy deck lights
- (3) 12" cleats with chafe guards port and starboard
- Access gate in rail, port and starboard with 6-step Marquipt Sea Stair
- Port and starboard built-in fender lockers to accommodate (3) 12" x 30" fenders
- Port and starboard 3" flush fuel fills
- Waste system deck fitting and freshwater deck fill, starboard catwalk
- Port and starboard 4-step teak tread stairwells leading to cockpit with courtesy deck lights and 52" polished stainless steel grab rail • Sea Stairs 7 step with vinyl treads & handrail / Marquipt

---

## Mechanical System

---

- T/3412, 1400hp E. CATS with air seps – 1840 hours
- PTO – both main engines for bow and stern thruster, davit, windlass
- Electronic gauges in pilothouse and flybridge – manual gauges with start/stops and hour meters
- Duel Racor 1000 fuel filters with vacuum gauge
- Gears ZF BW195A – Ratio 2-448:1 with 3 1/2" shafts

- Props - Nibral 5-blade 44" x 42"
- Kobelt – manual back-up clutch and throttles (engine room)
- Auto oil change system 24V with manifold, main engines, gears – port and starboard 32kw gensets
- 40 gallon aluminum fresh oil tank with sight gauge, deck fill, 40 gallon used oil tank with sight gauge
- FM200 Fire System with auto/manual release Certified until March 2016
- Port and starboard side air intakes with 110V air intake fans with manual speed controls
- Prop tunnels with approximately 15" keel
- Fuel tank - 3,000 gallon midship aluminum painted with Imron with (3) sight gauges and fuel cross over line
- Fresh water pump, HeadHunter 220V with back-up 24V HeadHunter with (3) cartridge water filters
- Dockside water fill Starboard side deck
- Hot water heater 50 Gal.
- Nutone 391 Central Vac with outlets in captain's cabin, main salon and guest companionway
- Bilge pumps (8) auto / manual with high water bilge alarm
- Starboard - Village Marine 1200 G.P.D. water maker with manual fresh water flush, sand filter, back flush and pilothouse remote start
- Port – Village Marine 800 gallon water maker with manual fresh water flush and pilothouse remote start
- Overhead 110V florescent lights in engine room
- Overhead 12V lighting in engine room
- Aquamet #22 3 1/2 " stainless steel shafts
- Dripless shaft seals with cross-over valves & spare seals
- Underwater main engine exhaust with transom by pass
- Wesmar Digital stabilizer with PTO port and starboard engine and 9' square fins
- Power steering assist pump – port and starboard engine



- Power freshwater sprayer with 110V pump and disconnect outlets boat deck, chain locker and cockpit
- Watertight door to engine room

## Electrical System

---

- 12V / 24V / 110V / 240V single phase
- s/100 AMP x 75' shore cord on glendinning cable master with boost isolation transformer
- s/50 AMP x 75' shore cord on glendinning cable master with boost isolation transformer
- Cable TV / telephone inlet with 50' cord
- (1) Newmar Phase 3 24V charger
- (1) Xantrex 12V charger
- Trace 4 kw inverter with 24V charger, (12) 2V batteries with separate inverter
- Battery parallel switch

### PORT

- **(1) Northern Lights 32 kw, 1800 RPM Genset with sound shield w/ 2590 hours**
- Water separator fuel filter, auto oil change system with auto A/C
- Exhaust separator
- Muffler stern discharge
- Remote starts in pilothouse and master stateroom

### Starboard

- **(1) Northern Lights 32 kw, 1800 RPM Genset with sound shield w/ 2610 hours**
- Water separator fuel filter, auto oil change system with auto A/C
- Exhaust separator
- Muffler with stern discharge
- Remote starts in pilothouse

### Night Generator

- (1) Fischer Panda 12kw, 3600 RPM Genset with sound shield **w/ 500 hours**
- Water separator fuel filter, remote start in crew quarters
- Aqualift muffler with portside discharge

---

## Head System

---

- HeadHunter fresh water heads with 200 gallon fiberglass integral tank with (2) 24V overboard discharge pumps
- Dockside deck fitting
- HeadHunter Tidal Wave 50 gallon waste treatment system
- Crew head system – VaccuFlush fresh water on Y valve
- Tank sentry master head, pilothouse, timer switch on overboard discharge pump in pilothouse

---

## Air Conditioning System

---

- Cruisair Reverse Cycle with single 220V raw water pump on relay and digital thermostats

---

## Remarks

---

SHORE GIRL is a custom family yacht, specifically designed to provide maximum livability, comfort and uncompromised cruising capability. Combined with her high standards of fit and finish, SHORE GIRL is truly a classic and timeless styled yacht that turns the heads of even the most seasoned yachtsman. If you don't like seeing yourself "coming and going" in every marina and appreciate style, quality, comfort and excellent sea keeping in a family yacht, then SHORE GIRL is a must see for you!!

---

## Exclusions

---

Ships clock & Barometer in galley - Owners tools and personal items, tender trailer. A detailed list will be provided at time of sale.

---

## Disclaimer

---

The Company offers the details of this vessel in good faith but cannot guarantee or warrant the accuracy of this information nor warrant the condition of the vessel. A buyer should instruct his

agents, or his surveyors, to investigate such details as the buyer desires validated. This vessel is offered subject to prior sale, price change, or withdrawal without notice.

## **Исключения**

---

При продаже яхты исключаются личные вещи владельца.

## **Отказ от ответственности**

---

Компания предоставляет описание судна или яхты добросовестно, но не может гарантировать точность этой информации, а также не ручается за техническое состояние. Покупатель должен проинструктировать своих агентов или оценщиков исследовать представленную информацию более подробно, по собственному желанию. Продажа судна или яхты, изменение цены или снятие с продажи будет происходить без предварительного уведомления.

# ФОТОГРАФИИ

**Foredeck**



**Foredeck**



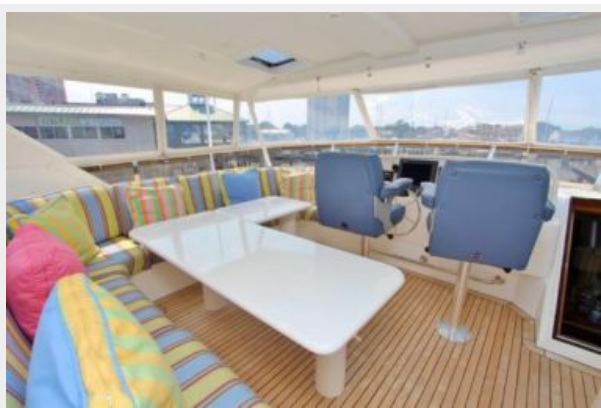
**Flybridge**



**Flybridge**



**Flybridge**



**Flybridge**



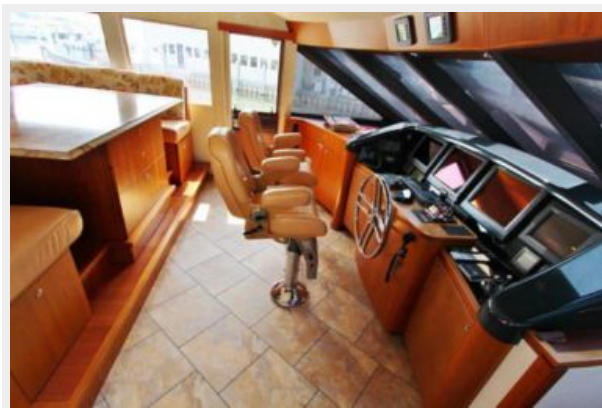
**Flybridge / Wet Bar**



**Pilothouse**



**Pilothouse**



**Pilothouse raised Dinette**



**Pilothouse raised Dinette**



**Galley**



**Galley**



**Galley**



**Galley**



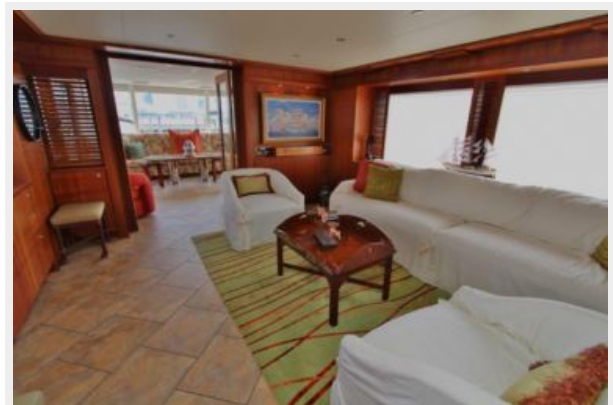
**Main Salon**



**Main Salon**



**Main Salon**



**Main Salon**



**Main Salon**



**Aft Deck**



**Aft Deck**



**Aft Deck**



**Aft Deck**



**Aft Deck**



**Aft Deck**



**Master Stateroom**



**Master Stateroom**



**Master Stateroom**



**Master Stateroom**





**Master Stateroom**



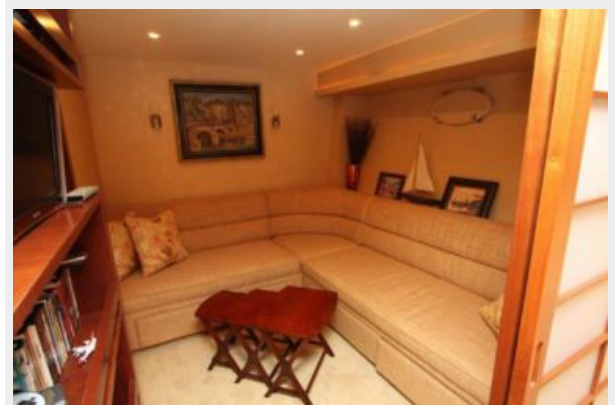
**Master Stateroom**



**Den / Convertible 4th Stateroom**



**Den / Convertible 4th Stateroom**



**Den - Convertible 4th Stateroom**



**Den / Convertible 4th Stateroom**



**Master Bath**



**Master Bath**



**Master Bath Vanity**



**VIP Stateroom**



**VIP Stateroom**



**VIP Stateroom**



**VIP Stateroom**



**VIP Head**



**VIP Head**



**Guest Stateroom**



**Guest Stateroom**



**Guest Head**



**Guest Gead**



**Laundry Room**



**Laundry Room**



**Crew quarters**



**Crew head**



**Crew Workshop**



**Control panel / Watertight door to engine room**



**Engines**



**Engines**



**Side Deck**



**Stern**



**Cockpit / Swim Platform**



Tender



Tender



Layout



# КОНТАКТЫ

---

Андрей Шестаков (Andrey Shestakov) – ведущий яхтенный брокер отдела продаж яхт и судов компании Shestakov Yacht Sales Inc. Официальный представитель Shestakov Yacht Sales Inc. для русскоговорящих клиентов в центральном офисе компании в Майами/Форт Лодердейл/Флорида/США.

## Контактная информация

---

Email: [andrey@shestakovyachtsales.com](mailto:andrey@shestakovyachtsales.com)

Web: [shestakovyachtsales.com](http://shestakovyachtsales.com)

## Телефоны

---

Краснодарский край: **+7(918)465-66-44**

США, Майами, Флорида: **+1(954)274-4435**

## Время работы

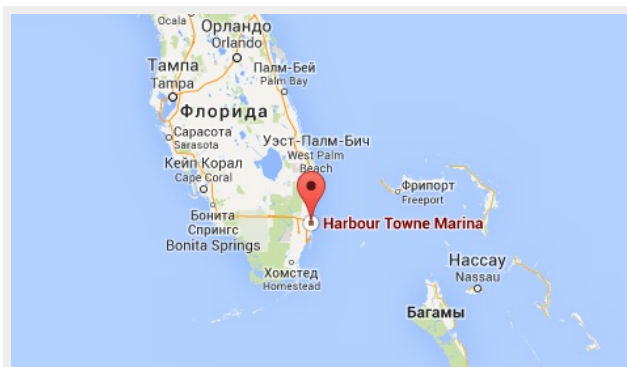
---

Понедельник – Суббота: **9:00 - 21:00**  
EDT

Воскресенье: **Закрито**

## Адрес

---



Harbour Towne Marina, 850 NE 3rd St,  
STE 213, Dania, FL 33004