

ICHIBAN — MERIDIAN



Builder: MERIDIAN

Year Built: 2004

Model: Cruiser

Price: PRICE ON APPLICATION

Location: United States

LOA: 41' 0" (12.50m)

Beam: 14' 2" (4.32m)

Max Draft: 3' 9" (1.14m)

Cruise Speed: 20 Kts. (23 MPH)

Max Speed: 24 Kts. (28 MPH)

Our experienced yacht broker, Andrey Shestakov, will help you choose and buy a yacht that best suits your needs **Ichiban — MERIDIAN** from our catalogue. Presently, at Shestakov Yacht Sales Inc., we have a wide variety of yachts available on our sale's list. We also work in close contact with all the big yacht manufacturers from all over the world.

If you would like to buy a yacht **Ichiban — MERIDIAN** or would like help answering any questions concerning purchasing, selling or chartering a yacht, please call **+1(954)274-4435**

TABLE OF CONTENTS

TABLE OF CONTENTS	2
SPECIFICATIONS	3
Overview	3
Basic Information	3
Dimensions	3
Speed, Capacities and Weight	3
Accommodations	4
Hull and Deck Information	4
Engine Information	4
DETAILED INFORMATION	5
Broker Comments & Upgrades	5
Key Features	5
Exclusions	6
Disclaimer	6
PHOTOS	7
CONTACTS	31
Contact details	31
Telephones	31
Office hours	31
Address	31

SPECIFICATIONS

Overview

This attractive Meridian 411 Sedan Bridge has timeless profile with a wide-open salon and light cherry-wood interior, premium-gloss finish, homelike seating arrangements and 360-degree views of the horizon sitting or standing. She also features a dedicated dinette which converts to a double berth and fully-equipped galley that are seamlessly integrated into the main living space. You have two large staterooms and heads. The flybridge's distinctive overhang offers more space topside as well as cockpit weather protection, and its molded-in steps are hinged to provide direct engine-room access. Why settle for a floating box on the water when you can enjoy all the style, efficiency, performance and comfort of the Meridian 411 Sedan Bridge. This yacht recently had full services, impellers, racor bowls, heat exchangers, new air conditioners (4), Deking bridge & cockpit, Stamoid Bimini & Enclosure, underwater lights, custom laminate flooring, detail every 10 days. The 10' tender and 9.9hp Mercury could be packaged with the purchase. This boat is in great condition and just returned from 2 weeks in the Bahamas. Contact us today for more information and a private showing.

Basic Information

Category: Cruiser

Model Year: 2004

Year Built: 2004

Country: United States

Dimensions

LOA: 41' 0" (12.50m)

Beam: 14' 2" (4.32m)

Max Draft: 3' 9" (1.14m)

Clearance: 18' 6" (5.64m)

Speed, Capacities and Weight

Cruise Speed: 20 Kts. (23 MPH)

Cruise Speed RPM: 2500 Kts.

Cruise Speed Range: 361

Max Speed: 24 Kts. (28 MPH)

Max Speed RPM: 3000 Kts.

Water Capacity: 150 Gallons

Holding Tank: 55 Gallons

Fuel Capacity: 200 Gallons

Accommodations

Total Cabins: 2

Total Heads: 2

Hull and Deck Information

Hull Material: Fiberglass

Engine Information

Engines: 2

Manufacturer: Cummins

Model: 370

Fuel Type: Diesel

DETAILED INFORMATION

Broker Comments & Upgrades

2015

- Details Every 10 days (Wax, Stainless, Wash)
- Complete Compound & Wax Completed 11/2014
- 1000 Hour Engine Services
 - Impellers
 - Heat Exchangers
 - Racors & Bowls Serviced
 - Fuel Filters
 - Oil & Filters
 - Zincs
- Annual Service Generator
 - Impellor
 - Oil & Filters
 - Racor & Bowl Serviced

2014

- Annual Services 02/2014
- Compound, Buff & Wax Entire Vessel 11/2014
- Custom Canvas Sunpad with Cover

2013

- (4) New A/C Units, (2) 16,000BTU (1) 10,000BTU & (1) 8,000BTU
- New Bimini, Stamoid & Enclosure, Eisenglass
- (4) Underwater Lights, Starboard (1) INOP
- New Quickline Swivel Anchor

2012

- Bottom Job w/ Cutlass Bearings
- Deking Bridge & Cockpit Flooring
- Custom Hardwood Galley and Salon, Laminate
 - Included new Subflooring with Sound Deadening Material

Key Features

Key Features

- Two stateroom & Two Head layout with island berths
- Relaxed, molded staircase to bridge
- Extended bridge with seating for eight
- Stand-up access to engine room
- Ultra-flow™ Comfort Air System with (4) New Units 2013
- Decking Flooring on Bridge & Cockpit
- Hardwood Floors, Custom Laminate Salon & Galley

Exclusions

Owner's personal belongings.

Disclaimer

The Company offers the details of this vessel or yacht in good faith but cannot guarantee or warrant the accuracy of this information nor warrant the condition of the vessel. A buyer should instruct his representatives, agents, or his surveyors, to investigate such details as the buyer desires validated. This vessel or yacht is offered subject to prior sale, price change, or withdrawal without notice.

PHOTOS







© B Shane Faunce



© B Shane Faunce



© B Shane Faunce



© B Shane Faunce



© B Shane Faunce



© B Shane Faunce











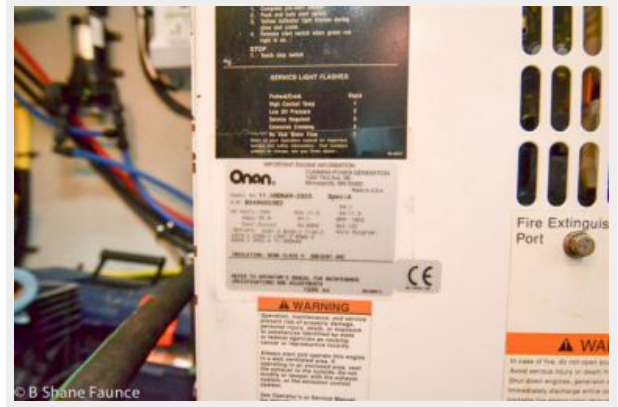




















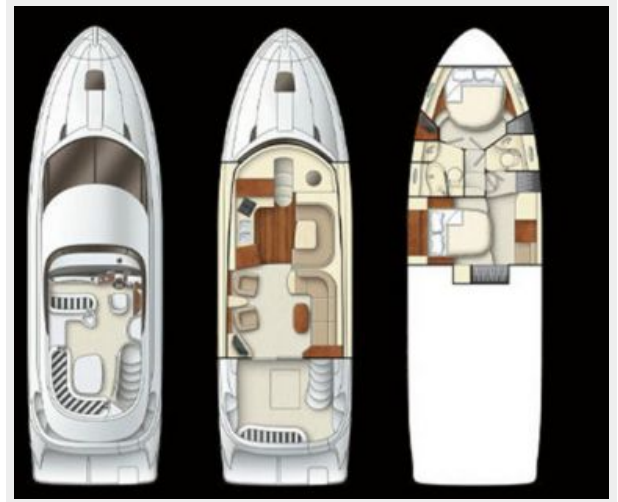












CONTACTS

Andrey Shestakov, leading yacht broker of the sales department of Shestakov Yacht Sales Inc. Shestakov Yacht Sales Inc., the official representative of the Miami/Fort Lauderdale FL headquarters.

Contact details

Email: andrey@shestakovyachtsales.com

Web: shestakovyachtsales.com/en/

Telephones

USA: +1(954)274-4435

Office hours

Monday – Saturday: **9:00 - 21:00** EDT

Sunday: **closed**

Address



Harbour Towne Marina, 850 NE 3rd St,
STE 213, Dania, FL 33004