

NICOLE EVELYN — HATTERAS



Builder: HATTERAS

Year Built: 2002

Model: Motor Yacht

Price: PRICE ON APPLICATION

Location: United States

LOA: 100' 0" (30.48m)

Beam: 22' 6" (6.86m)

Max Draft: 6' 6" (1.98m)

Cruise Speed: 18 Kts. (21 MPH)

Max Speed: 23 Kts. (26 MPH)

Our experienced yacht broker, Andrey Shestakov, will help you choose and buy a yacht that best suits your needs **NICOLE EVELYN — HATTERAS** from our catalogue. Presently, at Shestakov Yacht Sales Inc., we have a wide variety of yachts available on our sale's list. We also work in close contact with all the big yacht manufacturers from all over the world.

If you would like to buy a yacht **NICOLE EVELYN — HATTERAS** or would like help answering any questions concerning purchasing, selling or chartering a yacht, please call **+1(954)274-4435**

TABLE OF CONTENTS

TABLE OF CONTENTS	2
SPECIFICATIONS	5
Overview	5
Basic Information	5
Dimensions	5
Speed, Capacities and Weight	5
Accommodations	5
Hull and Deck Information	5
Engine Information	6
DETAILED INFORMATION	7
Salon	7
Dining	7
Galley	7
Master Stateroom	8
VIP Stateroom Forward	8
Guest Stateroom Port	9
Guest Stateroom Starboard	9
Main Deck	10
Pilothouse	10
Fly Bridge	11
Laundry Room	12
Crew Quarters	12
Electrical Equipment	12
Engine Room	13
Service and Upgrades	14
Broker's Comments	16
Exclusions	16
Disclaimer	16

PHOTOS	17
Salon	17
Salon	17
Salon	17
Salon Bar	17
Formal Dining	17
Formal Dining	17
Day Head	18
Galley	18
Galley	18
Galley Dinette	18
Companionway	18
Master Stateroom	18
Master Stateroom	19
Master Bath	19
Guest Stateroom	19
Guest Bath	19
Guest Stateroom	19
Guest Bath	19
Forward Guest Bath	20
Pilothouse Helm	20
Pilothouse	20
Bow Seating	20
Bow	20
Aft Deck	21
Aft Deck	21
Flybridge Helm	21
Flybridge	21
Flybridge	21

Sun Deck	21
Sun Deck	22
Sun Deck	22
Engine Room	22
Engine Room	22
CONTACTS	23
Contact details	23
Telephones	23
Office hours	23
Address	23

SPECIFICATIONS

Overview

NICOLE EVELYN represents one of the nicest 100' Hatteras ever built. She has many custom features as well as a very elegant interior. Over 30,000 lbs. of granite, onyx and other rare marble are featured in NICOLE EVELYN. This is a truly rare opportunity to find a vessel in this size range with the interior volume and quality. She's perfect and ready to go anywhere!

Basic Information

Category: Motor Yacht	Model Year: 2002
Year Built: 2002	Country: United States

Dimensions

LOA: 100' 0" (30.48m)	Beam: 22' 6" (6.86m)
Max Draft: 6' 6" (1.98m)	

Speed, Capacities and Weight

Cruise Speed: 18 Kts. (21 MPH)	Max Speed: 23 Kts. (26 MPH)
Water Capacity: 840 Gallons	Fuel Capacity: 5125 Gallons

Accommodations

Total Cabins: 4	Sleeps: 8
Captain Cabin: True	

Hull and Deck Information

Hull Material: Fiberglass

Engine Information

Engines: 2

Manufacturer: DDC/MTU

Model: 16V2000

Engine Type: Inboard

Fuel Type: Diesel

DETAILED INFORMATION

Salon

The gorgeous salon features a plush sofa, custom constructed coffee table, two end tables and three additional leather chairs. Entertainment amenities include a 46" Toshiba flat screen TV, stereo/CD sound equipment, and a sunken granite-topped wet bar with icemaker and refrigerator. Entertain in style and comfort or adjust the dimmable lights and enjoy an intimate evening. The convenient day head echoes the elegance of the salon with an arched doorway, marble flooring and rich wood cabinetry.

- (3) Controlled CruisAir air conditioners
- Denon AM/FM tuner
- Yamaha CD player
- Panasonic BlueRay player
- Toshiba 46" television
- Digital Satellite System
- Entertainment center
- Wet Bar with (4) stools, icemaker, refrigerator and sink
- Desk
- Custom wool carpeting
- Roller pocket and blackout blinds
- Day head

Dining

Forward the salon area is the formal dining area which includes a large custom teak inlay dining table and eight matching chairs.

Galley

- Oversized Country Kitchen layout
- Sub Zero side by side
- (6) Sub Zero drawers
- (2) KitchenAid refrigerators
- LG microwave oven
- Electric ceramic glass top stove
- Dual stainless steel sink
- KitchenAid trash compactor
- KitchenAid dishwasher
- Granite counter tops

- Full pantry
- Breakfast bar with two stools
- Horseshoe shaped dinette
- Insta-Hot water heater
- Smoke alarm

Master Stateroom

Arched double entry doors lead to the elegant full beam master stateroom. This luxurious master suite includes a king-size berth, port and starboard walk-in cedar lined hanging closets, wood paneling and crown molding. This His/Her Ensuite heads boast finished wood cherry cabinetry, marble countertops, oversized marble shower and his/her vanities.

- King-sized berth
- Built in chest under berth
- (2) Walk-in cedar lined closets
- (2) Dressers
- (2) Night stands
- Denon AM/FM tuner
- Yamaha amplifier
- Toshiba 42" flat screen TV
- Sony Direct TV digital satellite system
- Yamaha Surround Sound with (5) disc player
- Roller pocket blinds and blackout drapes
- Premium wool carpeting
- Marble floor covering
- Smoke alarm
- SMX CruisAir CHL / H2O air conditioner
- (2) Ensuite heads with HeadHunter heads

VIP Stateroom Forward

The VIP forward stateroom features a queen size berth, hanging locker, dual night stands and a private ensuite head with marble tops and a large marble shower.

- Queen berth dresser
- (2) Night stands
- Under berth storage
- Cedar lined closet
- Blackout roller drapes
- Roller pocket blinds
- Wool carpeting
- Sharp 19" television

- Sony stereo system
- Sony CD player
- Sony AM/FM tuner
- Entertainment center
- (2) SMX CruisAir air conditioners
- Smoke alarm
- Ensuite head with HeadHunter head
- Shower

Guest Stateroom Port

The port guest stateroom offers queen-size accommodations which features cherry wood paneling, crown and roller pocket blinds. Storage is generous and includes a cedar lined closet, dresser and a night stand. Private access to full ensuite head with marble tops and large shower.

- Queen-size berth
- Dresser
- Night stand
- Under berth storage
- Cedar lined closet
- Wool carpet
- Roller pocket/blackout blinds and drapes
- Sony 13" television
- Entertainment center
- Sony AM/FM tuner
- Sony CD player
- Direct TV digital satellite system
- Ensuite head with HeadHunter head
- SMX CruisAir air conditioning
- Smoke alarm

Guest Stateroom Starboard

The starboard guest stateroom offers queen-size accommodations (convertible to twin berths) and features wood paneling, crown molding and roller pocket blinds. Private access to the ensuite head which includes marble tops and a Jacuzzi bath in place of the shower.

- Queen-sized berth
- Under berth storage
- Cedar lined hanging closet
- (2) Night stands

- Dresser
- Wool carpeting
- Roller pocket / blackout blinds and drapes
- Sony 13" television
- Sony stereo system
- (2) Speakers
- Smoke alarm
- SMX CruiseAir air conditioning
- Ensuite head with HeadHunter head

Main Deck

- Stainless steel navy style anchor
- Anchor
- Marquipt 2500 lb. davit
- (4) Boarding gates
- (2) Tide rider boarding ramps
- Bow light
- Bow rail
- Maxwell 3500 capstan
- Large locker
- Gangway
- Hailer
- Emergency exit - crew hallway
- Life jacket, life ring, life sling, lifeline
- Forward/aft locker
- Navigation lights
- Stainless steel rub rail
- Security system
- Shower
- Side stanchions
- Swim stanchions
- Swim platform
- Tender
- Transom door
- Wash down system
- Aft deck anchor
- Maxwell 3500 and Maxwell VWC6000 windlass
- Windshield shades

Pilothouse

The rich look of cherry wood continues in the pilothouse with wood plank flooring and wood cabinetry. The pilothouse features an L-shaped lounge with table, desk/chart table, stairs to the starboard companionway and steps to the flybridge.

- (2) Raymarine
- Anshultz autopilot
- (2) Sea 157 VHF
- Nobeltec chart plotter
- Ritchie compass
- Sony stereo / CD player
- Echo pilot sonar
- B&G 2000 depth sounder
- Halon control
- Ibex closed circuit TV
- Brother Intell fax 225
- Northstar 952X GPS
- Hatteras instrument panel
- Jog steering
- (2) ACR spot lights
- (2) Furuno color black box
- Rudder position indicator
- Naiad MultiSea II stabilizers
- SEA 235 SSB radio
- SEA 857 intercom
- (5) Windshield wipers
- Anshutz tiler steering
- Furuno weather fax
- Hynautic wheel steering
- American bow thruster
- B&G Hydra 2000 wind speed indicator

Fly Bridge

Navigate with ease and entertain in style on this flybridge. A control station with all switches and dimmable lighted instruments makes piloting this beauty almost effortless. Family and guest will enjoy the expansive deck seating complete with a 4-burner grill, refrigerator and ice maker.

- (2) Raymarine
- VEI screens
- Anshultz autopilot
- Auto chart plotter
- Coast Guard safety package
- Ritchie compass

- Echo pilot sonar
- B&G 2000 depth sounder
- Fish finder
- Northstar 952X GPS
- Anshutz gyrocompass
- Sea Hail hailer
- Aft hatch
- (3) Murray style helm chairs
- (10) Horns
- (12) Life jackets, (2) life rings, (2) life lines
- Furuno radar
- Radar arch
- Rudder position indicator
- Speed and distance log
- B&G 2000 speed indicator
- SEA 157 VHF radio
- Stainless Destroyer steering wheel
- Eisenglass enclosure
- Eskimo ice maker
- Refrigerator
- Sink
- Granite counter tops
- (2) L-shaped settees with granite tables
- Hatteras systems display
- Gaggenau 4-burner grill
- Marquipt 2500 lb. davit

Laundry Room

- (2) Whirlpool stacked washer/dryer units, one in crew's hallway

Crew Quarters

For maximum privacy, crew quarters are located aft and include three crew staterooms with two private heads and a captain's stateroom with private head.

Electrical Equipment

- 240 Volt / 120 Volt / 24 Volt AC electrical system
- (2) 100 amp service
- Radionics alarm

- (6) Douglas
- (12) 8D batteries
- (6) D8 gel cells
- (2) Master volt battery charger 24 volt / 100 volt
- Battery parallel switch
- Jefferson electric converter
- 24 Volt / 12 Volt DC electrical system
- (2) Glendinning dockside electrical cables
- (2) 100 amp cords - 100'
- (2) 100 amp manual dockside switches
- Electrical bonding system grounded through hull plates
- New port panel
- (2) Jefferson transformers - # 211 - 0188 647
- Uninterruptable power supply - (4) separate units
- Newport voltage meter - new
- (2) Manual controls for shore cords

Engine Room

- Air filtration system
- Reversible 240 Volt fan
- Air induction system
- (4) Alternators
- Antisiphon valve
- Battery alarm
- Bilge alarm
- Delta T bilge blower
- (2) 24 volt & (2) 240 volt bilge pumps
- American bow thruster
- Box drain system
- Burglar alarm
- Clutch guard
- Emergency engine stop
- DDEC engine controls
- Engine flushing system
- Engine hour meter
- Red engine mounts
- Engine room sound insulation
- Engine synchronizers
- Engine temperature alarm
- Fire alarm
- Fire control system
- Fresh water cooling system

- Racor fuel filter
- Fuel management system
- Fuel shut-off valve
- Fuel tank
- Fume alarm
- Gear box
- Block heaters
- High water alarm
- Holding tank
- Marine exhaust systems
- Muffler
- Oil filter
- Oil pressure alarm
- Oil temperature alarm
- Oil transfer system
- Power line alarm
- (2) Propellers
- Raw water sea strainer
- (2) Shafts
- Smoke alarm
- Naiad 302 stabilizers
- Start/Stop switch
- Twin Disc transmission
- (2) Head Hunter water pumps
- Water temperature alarm
- (2) Watermakers Inc
- Workbench

Service and Upgrades

2012 – 2013

- New cutlass bearings & seals
- New rudder bearing (rudders removed and machined to OE Specs)
- New strut bearings & seals
- New shaft seals
- Propellers computer balanced
- Shafts balanced (shafts removed and machined to OE Specs)
- Naiad stabilizer rebuilt & new seals
- New control panels for stabilizers
- Rebuilt American bow thruster
- New water maker membranes
- Complete bottom job (paint new zincs)

- Prop. speed on all running gear
- All sea cocks valves rebuilt or new
- New power-steering hoses
- Rebuilt steering cylinder and Servo cylinder

2014 – 2015

- New engine room air compressor
- New ground Sonar (image of ocean/sea floor)
- New microwave in Galley
- New exterior "all-around" LED lighting on deck
- Two (2) new "Viking Low-profile" 12-person Life rafts
- Install new transducers
- New water pump generators
- Bottom painted and all new zincs installed
- New under-water light bulbs installed
- Complete rebuilt of entire air conditioning system including all lines reinstalled
- New chillers and new control panel
- New pumps
- Fuel tanks cleaned
- New sanitary macerator pump

2015

- New "EZ to See" all around complete enclosure canvas covers and curtains for flybridge
- Rebuilt Marquip davit
- New "EZ Go" lights on flybridge
- New Sunbrella flybridge cushions
- New Sunbrella bow cushions
- New Sunbrella aft-deck cushions
- New ice maker at bar
- Reupholstered leather bar stools
- Reupholstered dining room chairs
- New Galley cushions and chairs
- New aft deck chairs and bench cushions
- New settee cushions
- New "all weather" covers for chairs, settee and cushions (surround and keep contained)
- New "all weather" table cover
- Custom transom wedges/trim tabs
- New spurs & zincs
- All new engine room intake filters
- New fender tracks
- New port turbo & exhaust on main engine
- New port and starboard ERM controls
- Port and starboard engine charged air cooler (1 new; 1 rebuilt)

- New Fire Suppression System and (22) new fire extinguishers
- Air compressor rebuilt of Kahlenberg horns
- Air horns rebuilt with all new solenoid
- New bow seating speakers
- New zincs on rudders
- New spurs
- New zincs on shaft
- All new batteries (gel-type)

Broker's Comments

NICOLE EVELYN represents one of the nicest 100' Hatteras' ever built, with owners and crew who have maintained it to the highest standards since her inception. The many custom features include teak decks, marble and onyx throughout, and a great flybridge for entertaining. Among her features are a four stateroom layout with cherry joinery throughout, large country kitchen, expansive flybridge with bar and cocktail tables, and generous crews quarters aft.

Exclusions

Owner's personal belongings.

Disclaimer

The Company offers the details of this vessel or yacht in good faith but cannot guarantee or warrant the accuracy of this information nor warrant the condition of the vessel. A buyer should instruct his representatives, agents, or his surveyors, to investigate such details as the buyer desires validated. This vessel or yacht is offered subject to prior sale, price change, or withdrawal without notice.

PHOTOS

Salon



Salon



Salon



Salon Bar



Formal Dining



Formal Dining



Day Head



Galley



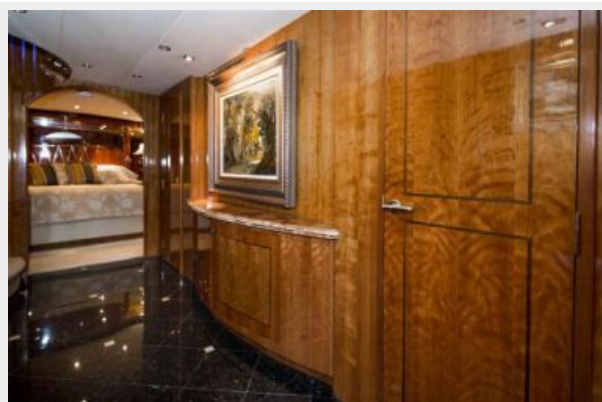
Galley



Galley Dinette



Companionway



Master Stateroom



Master Stateroom



Master Bath



Guest Stateroom



Guest Bath



Guest Stateroom



Guest Bath



Forward Guest Bath



Pilothouse Helm



Pilothouse



Bow Seating



Bow



Aft Deck



Aft Deck



Flybridge Helm



Flybridge



Flybridge



Sun Deck



Sun Deck



Sun Deck



Engine Room



Engine Room



CONTACTS

Andrey Shestakov, leading yacht broker of the sales department of Shestakov Yacht Sales Inc. Shestakov Yacht Sales Inc., the official representative of the Miami/Fort Lauderdale FL headquarters.

Contact details

Email: **andrey@shestakovyachtsales.com**

Web: shestakovyachtsales.com/en/

Telephones

USA: **+1(954)274-4435**

Office hours

Monday – Saturday: **9:00 - 21:00 EDT**

Sunday: **closed**

Address



Harbour Towne Marina, 850 NE 3rd St,
STE 213, Dania, FL 33004