

IRISH REEL III — HATTERAS



Судостроитель: HATTERAS

Год постройки: 2003

Модель: Катер для спортивной рыбалки

Цена: ЦЕНА ЯХТЫ ПО ЗАПРОСУ

Местонахождение: United States

Длина общая: 60' 0" (18.29m)

Ширина: 17' 4" (5.28m)

Мин. осадка: 5' 4" (1.63m)

Купить **IRISH REEL III — HATTERAS** а также выбрать подходящую вам яхту из нашего **каталога яхт** вам поможет опытный яхтенный брокер Андрей Шестаков. На сегодняшний день компания **Shestakov Yacht Sales Inc.** имеет большое количество яхт в **собственном списке продаж**, а также тесно сотрудничает со всеми крупными **яхтенными производителями** по всему миру.

Для того чтобы купить яхту **IRISH REEL III — HATTERAS** а также проконсультироваться по любому вопросу связанному с покупкой, продажей, чартером яхт позвоните по телефону **+7(918)465-66-44**.

ОГЛАВЛЕНИЕ

ОГЛАВЛЕНИЕ	2
ХАРАКТЕРИСТИКИ	6
Обзор	6
Основная информация	6
Размеры	6
Скорость, вместимость и масса	6
Размещение	7
Корпус и палуба	7
Информация о двигателе	7
ПОДРОБНОЕ ОПИСАНИЕ	8
Recent Upgrades/Service	8
Accommodations	8
Salon	8
Galley	9
Dinette	10
Companionway	10
Master Stateroom	10
Master Head	11
VIP Berth	11
VIP Head	12
Guest Stateroom	12
Guest/Day Head	13
Enclosed Flybridge	13
Electronics and Navigational Equipment	14
Aft Bridge Deck	15
Cockpit	16
Engine Room	17
Machine and Accessories	18

Исключения	19
Отказ от ответственности	19
ФОТОГРАФИИ	20
Salon	20
Salon	20
Salon	20
Salon	20
Dinette	20
Salon	20
Dinette	21
Galley	21
Galley	21
Galley	21
Master Stateroom	22
Master Stateroom	22
Master Head	22
Master Stateroom	22
Forward VIP Stateroom	23
Forward VIP Stateroom	23
Forward VIP Stateroom	23
Forward VIP Stateroom	23
Forward VIP Head	24
Guest Stateroom	24
Guest Head	24
Washer/Dryer	24
Enclosed Bridge	25
Enclosed Bridge	25
Enclosed Bridge	25
Enclosed Bridge	25

Enclosed Bridge	25
Enclosed Bridge	25
Aft Deck-Controls	26
Aft Deck-Controls	26
Aft Deck	26
Aft Deck	26
Cockpit	27
Cockpit	27
Cockpit	27
Cockpit	27
Cockpit	27
Cockpit	28
Cockpit	28
Cockpit	28
Engine Room	28
Engine Room	28
Engine Room	28
Engine Room	29
Engine Room	29
Engine Room	29
Engine Room	29
Engine Room	29
Engine Room	30
Irish Reel III	30
Irish Reel III	30
Irish Reel III	30
Irish Reel III	30
Irish Reel III	30
Irish Reel III	30
Irish Reel III	31
Irish Reel III	31
КОНТАКТЫ	32

Контактная информация	32
Телефоны	32
Время работы	32
Адрес	32

ХАРАКТЕРИСТИКИ

Обзор

Irish Reel III is a beautiful 2004 60' Hatteras enclosed bridge sportfish. This world class convertible sportfish is loaded with all the amenities to travel to your favorite destinations safely and comfortably. Irish Reel III has always benefitted from being cared for by a professional captain and crew and no expense spared in maintenance. All service is current and up to date as well as all maintenance records. She features the preferred 3 stateroom 3 head layout with a beautiful high gloss cherry interior, the enclosed bridge joins the salon through a gorgeous spiral staircase and also acts as a second salon area that will keep you cool and protected while traveling. Recently she received a full detail, engine service, and new aft seat cushions on the aft bridge deck. This boat is ready to travel do not miss this opportunity, call to schedule your showing today.

Основная информация

Тип судна: Катер для спортивной рыбалки

Модельный год: 2004

Год постройки: 2003

Страна: United States

Размеры

Длина общая: 60' 0" (18.29m)

Ширина: 17' 4" (5.28m)

Мин. осадка: 5' 4" (1.63m)

Скорость, вместимость и масса

Водоизмещение: 74500 Pounds

Вместимость воды: 200 Gallons

Вместимость сточного бака: 100 Gallons **Объем топливного бака:** 1622 Gallons

Размещение

Всего кают: 3

Корпус и палуба

Материал корпуса: Fiberglass

Информация о двигателе

Двигатели: 2

Производитель: Caterpillar

Модель: C-30

Тип двигателя: Inboard

Тип топлива: Diesel

ПОДРОБНОЕ ОПИСАНИЕ

Recent Upgrades/Service

- Full detail compound and wax (7/2015)
- New aft seat cushions (2015)
- New console dash covering (2015)
- Oil change (2015)
- All new injectors (2015)
- (2) new fuel pumps (2015)
- New water heater
- New zincs (8/2015)
- Bottom Painted (11/2014)
- Heat exchangers and after coolers and all gaskets done at 3000 hours •New dripless seals on shaft logs (2015) •Engine room repainted (2015) •A/C Service and descaled

Accommodations

As you enter the salon to port is a large L shaped sofa with large storage below and a teak adjustable high low table with extendable leafs. Moving forward to port is the open galley with slide out refrigerator and freezer drawers, a four burner cooktop stove and a large pantry storage just behind. To starboard just off of the galley is the newly covered dinette large enough for 4-5 with storage below and the salon entertainment equipment. Further aft is the ice maker, large flat screen T.V. and spiral staircase leading to the bridge. Moving forward the curved companionway will guide you to the guest quarter to starboard with over under single berths and a large closet. Just forward to starboard is the guest/day head with full shower and guest quarter access. Continuing forward to starboard is the Utility closet housing the Whirlpool washer and dryer and at the end of the companionway is the large VIP stateroom featuring an island queen walk around berth with storage below and a private ensuite head and full shower. The executive class master stateroom is located on the port side of the companionway and features a large full size queen walk around berth, double cedar lined hanging closets, Flat screen TV and a private ensuite full head and shower.

Salon

- L-Shaped Sofa
- Teak adjustable high/low table with extendable leaves
- Dual cycle AC/Heat 30,000 BTU's
- SMX AC control panel
- Sony Flat-screen HDTV
- SAT TV
- Surround sound system
- Storage
- Fire extinguisher
- Carpet Runner
- Wood panel Blinds
- High gloss cherry valences
- Ice maker
- (24) Overhead lights
- Accent lighting
- Lamp
- Spiral staircase to bridge

Galley

- Teak and Holly Sole
- 4 burner cook top stove
- Microwave/Convection oven
- Galley exhaust fan
- Corian counter top
- Dish and pantry storage
- Water maker remote start/stop panel

- Stainless steel sink with disposal
- 110V outlets
- Fluorescent lighting

Dinette

- U-Shape seating with storage below
- Corian dinette table
- Entertainment/AV Equipment
- Subwoofer (mounted under the seat)
- Teak and Holly sole

Companionway

- Whirlpool Washer
- Whirlpool Dryer
- Carpet runner for landing and steps
- Smoke Detector
- AC/DC Circuit panel
- AC/DC Distribution panel
- Generator remote panels
- (8) Overhead lights
- Smoke detector

Master Stateroom

- Full Queen Walk Around berth with cedar lined storage below
- (2) Large cedar lined hanging closets
- (3) Drawer Credenza

- (2) Night stands
- (2) reading lamps
- (2) Overhead ceiling speakers
- Smoke detector
- A.C. Control
- Fire extinguisher
- Vanity with (3) drawers and storage above
- Sharp Aquos flat screen TV
- Dual Cycle AC/Heat
- 110V Outlets

Master Head

- Corian Countertops
- Freshwater Head Hunter head
- Full Shower with seat
- Medicine cabinet
- Teak and Holly Sole
- Exhaust Fan
- Storage below sink
- Overhead deck hatch
- (3) Overhead lights
- Towel bar
- Accent lighting

VIP Berth

- Full Queen walk around berth with cedar lined storage below

- Overhead deck hatch
- (2) cedar lined Hanging closets
- Sharp flat screen T.V.
- (6) Overhead storage cabinets
- 110V Outlets
- (2) Nightstands
- (2) Reading lights
- (7) Overhead lights
- Forward bilge access
- Holding tank access
- Bilge pump with high water alarm
- (2) Overhead ceiling speakers
- Dual Cycle air conditioner/ Heat

VIP Head

- Corian counter Top
- Head Hunter freshwater head
- Full shower
- Exhaust blower
- Medicine cabinet
- Teak and Holly Sole
- Towel bar
- Pantry storage under sink
- (3) Overhead lights

Guest Stateroom

- (2) Single over/under bunks
- Sharp flat screen TV
- Large cedar lined hanging closet
- (2) Reading lamps
- Fire extinguisher
- Central Vacuum
- (2) Overhead speakers
- Bilge access to Hot/Cold water manifold
- (2) Overhead lights
- Smoke detector
- 110V Outlet
- AC Control panel

Guest/Day Head

- Corian Countertop
- Full Shower
- Medicine Cabinet
- Freshwater Head Hunter head
- Laundry pantry storage below sink
- Teak and Holly Sole
- Exhaust blower
- 110V Outlet
- (3) Overhead lights
- Towel bar

Enclosed Flybridge

- (3) Wiper blades and washers
- Mini refrigerator
- Wet bar
- L-shaped sofa with storage below
- (8) Overhead lights
- (2) Overhead speakers
- 30,000 BTU A.C.
- New upholstered dash covering
- Helm electronics access
- Air compressor
- Starboard bench seating with drawer storage below
- 110V Outlet
- Aft bridge deck Access
- Radar arch
- Dual horns
- Spotlight
- New 17' antenna
- DC Circuit panel
- Sea fire remote override panel
- Sturdy control boxes
- Fire extinguisher
- Glomex antenna
- Sharp flat screen T.V.

Electronics and Navigational Equipment

- Furuno FCV1200L sounder
- Garmin 4210 Chart plotter/GPS
- (2) CAT digital engine displays
- ACR 100 spotlight
- Simrad AP22 autopilot
- Trim tabs
- Garmin GMI10 digital display with 200khz intelli-ducer
- Garmin 4212 Chart plotter/GPS
- Furuno video repeater with engine room cameras, cockpit camera, radar
- Furuno black box radar
- Sturdy emergency back up controls
- Sea fire override panel
- ICOMIC-M602 VHF
- Hatteras digital ship monitoring system
- Compass
- Battery Parallel
- KVH Sat dome receiver

Aft Bridge Deck

- Aft seat cushions with storage below
- Aft helm station
- Engine gauges
- (2) Overhead deck lights
- Pedestal chair for aft station
- (2) Sidewinder teaser reels
- (2) Aft spreader lights

Cockpit

- Transom lift gate and door
- Bluewater fighting chair with rocket launcher
- Cockpit Freezer
- Freshwater sink/rigging station
- Tackle drawers
- Insulated drink box
- Lead storage
- Transom fish box
- Large macerated deck fish box
- Eskimo ice maker
- Engine room access
- Aft bridge deck access
- Lazzerette access
- (2) Cable masters (port cable is new (2015))
- Phone/TV hookup
- Misters
- Cockpit camera
- (16) Rod holders
- Rupp triple spreader outriggers
- Freshwater/saltwater rinse
- Deck lights
- Accent lights
- (2) Speakers under gunwale
- Self bailing cockpit with scuppers

- Live well
- Step box

Engine Room

- A.C. / D.C. distribution panels
- (2) Onan 21KW generators
- (2) Caterpillar C-30 main engines
- Battery on/off switches
- Hydraulic pump for davit
- (5) A.C. Compressors
- (2) fire extinguishers
- Sea Recovery water maker
- Mach 5 Freshwater pump
- (4) Racor 1000 fuel water separators
- (2) Racor 500 fuel water separators
- Oil change system
- Fuel priming pumps
- A.C. Raw water pump
- Cockpit freezer pump
- Engine room camera
- Battery charger
- Mister system
- Low pressure feed pump for water maker
- Sea Recovery water maker
- Eskimo 600lbs per day ice maker
- Freshwater outlet

- 110V outlet
- Engine room fans
- Engine room blowers
- Dual transfer pumps
- AC engine room lighting
- DC engine room lighting
- (2) Cablemaster's
- (2) Transformers
- Hot water tank

Machine and Accessories

- (3) Rule 2000 bilge pumps with float switches
- International navigation lights
- Dual air horns
- Air compressor
- Eskimo ice maker
- Davit 1000lb
- (2) Onan 21KW generator with sound shield
- Oil change system
- Fuel Priming pump
- Fuel transfer pump
- (4) Racor1000 fuel water separators
- (2) Racor500 Fuel water separator
- Seafire fire suppression system
- Windlass Cutoff breaker
- Analog engine gauges

- (2) 110V Outlets
- (2) Engine room blowers
- Sea Recovery water maker

Исключения

При продаже яхты исключаются личные вещи владельца.

Отказ от ответственности

Компания предоставляет описание судна или яхты добросовестно, но не может гарантировать точность этой информации, а также не ручается за техническое состояние. Покупатель должен проинструктировать своих агентов или оценщиков исследовать представленную информацию более подробно, по собственному желанию. Продажа судна или яхты, изменение цены или снятие с продажи будет происходить без предварительного уведомления.

ФОТОГРАФИИ

Salon



Salon



Salon



Salon



Salon



Dinette



Dinette



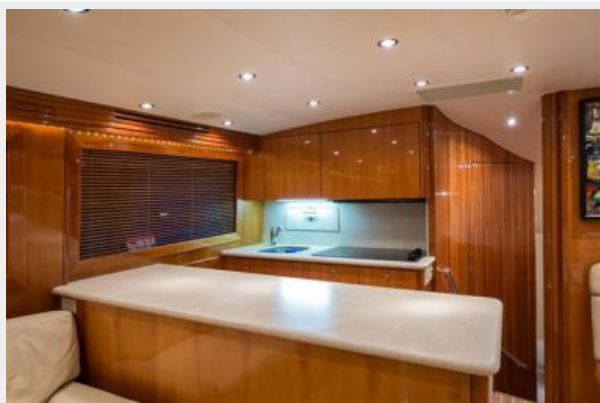
Galley



Galley



Galley



Master Stateroom



Master Stateroom



Master Stateroom



Master Head



Forward VIP Stateroom



Forward VIP Stateroom



Forward VIP Stateroom



Forward VIP Stateroom



Forward VIP Head



Guest Stateroom



Guest Head



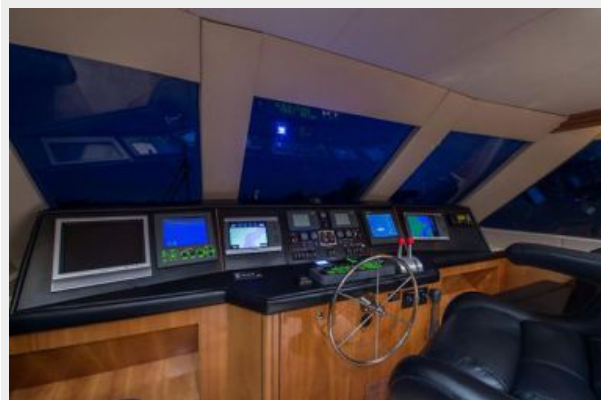
Washer/Dryer



Enclosed Bridge



Enclosed Bridge



Enclosed Bridge



Enclosed Bridge



Enclosed Bridge



Enclosed Bridge



Aft Deck-Controls



Aft Deck-Controls



Aft Deck

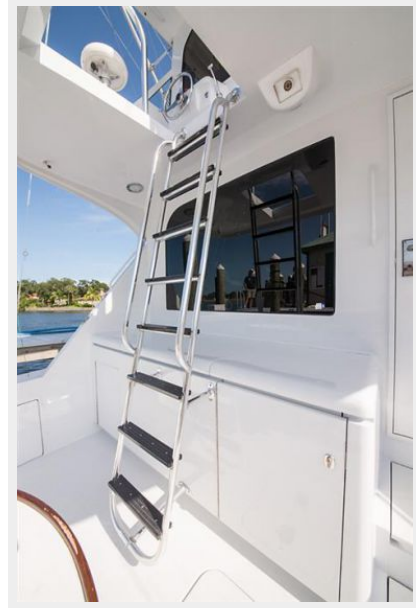
Aft Deck



Cockpit



Cockpit



Cockpit



Cockpit



Cockpit



Cockpit



Cockpit



Engine Room



Engine Room



Engine Room



Engine Room



Engine Room



Engine Room



Engine Room



Engine Room



Irish Reel III



Irish Reel III



Irish Reel III



Irish Reel III



Irish Reel III



Irish Reel III



Irish Reel III



КОНТАКТЫ

Андрей Шестаков (Andrey Shestakov) – ведущий яхтенный брокер отдела продаж яхт и судов компании Shestakov Yacht Sales Inc. Официальный представитель Shestakov Yacht Sales Inc. для русскоговорящих клиентов в центральном офисе компании в Майами/Форт Лодердейл/Флорида/США.

Контактная информация

Email: andrey@shestakovyachtsales.com

Web: shestakovyachtsales.com

Телефоны

Краснодарский край: **+7(918)465-66-44**

США, Майами, Флорида: **+1(954)274-4435**

Время работы

Понедельник – Суббота: **9:00 - 21:00**
EDT

Воскресенье: **Закрито**

Адрес



Harbour Towne Marina, 850 NE 3rd St,
STE 213, Dania, FL 33004