

OCTOBER PRINCESS — VIKING SPORT CRUISERS



Судостроитель:

VIKING SPORT CRUISERS

Год постройки: 2000

Модель: Моторная яхта

Цена: ЦЕНА ЯХТЫ ПО ЗАПРОСУ

Местонахождение: United States

Длина общая: 72' 0" (21.95m)

Ширина: 19' 1" (5.82m)

Макс. осадка: 4' 9" (1.45m)

Крейс. скорость: 25 Kts. (29 MPH)

Макс. скорость: 30 Kts. (35 MPH)

Купить **October Princess — VIKING SPORT CRUISERS** а также выбрать подходящую вам яхту из нашего каталога яхт вам поможет опытный яхтенный брокер Андрей Шестаков. На сегодняшний день компания **Shestakov Yacht Sales Inc.** имеет большое количество яхт в собственном списке продаж, а также тесно сотрудничает со всеми крупными яхтенными производителями по всему миру.

Для того чтобы купить яхту **October Princess — VIKING SPORT CRUISERS** а также проконсультироваться по любому вопросу связанному с покупкой, продажей, чартером яхт позвоните по телефону **+7(918)465-66-44**.

ОГЛАВЛЕНИЕ

ОГЛАВЛЕНИЕ	2
ХАРАКТЕРИСТИКИ	4
Основная информация	4
Размеры	4
Скорость, вместимость и масса	4
Размещение	4
Корпус и палуба	4
Информация о двигателе	5
ПОДРОБНОЕ ОПИСАНИЕ	6
Salon	6
Galley	6
Master Stateroom	7
Master Head	7
VIP Stateroom	7
VIP Head	8
Guest Stateroom Port	8
Guest Stateroom Starboard	8
Guest Head	9
Crew Quarters	9
Aft Deck	9
Deck Equipment	10
Flybridge	10
Electrical System	11
Electronics and Navigation	11
Tenders	12
Engine /Mechanical Equipment	12
Broker's Remarks	13
Исключения	13

Отказ от ответственности	13
ФОТОГРАФИИ	14
КОНТАКТЫ	24
Контактная информация	24
Телефоны	24
Время работы	24
Адрес	24

ХАРАКТЕРИСТИКИ

Основная информация

Тип судна: Моторная яхта

Модельный год: 2000

Год постройки: 2000

Страна: United States

Размеры

Длина общая: 72' 0" (21.95m)

Ширина: 19' 1" (5.82m)

Макс. осадка: 4' 9" (1.45m)

Скорость, вместимость и масса

Крейс. скорость: 25 Kts. (29 MPH)

Макс. скорость: 30 Kts. (35 MPH)

Вместимость воды: 315 Gallons

Вместимость сточного бака: 140 Gallons

Объем топливного бака: 1500 Gallons

Размещение

Всего кают: 4

Спальные места: 8

Всего ком. состава: 4

Каюты экипажа: 1

Корпус и палуба

Материал корпуса: Fiberglass

Материал палубы: Teak

Информация о двигателе

Двигатели: 2

Производитель: MAN

Модель: 2842

Тип двигателя: Inboard

Тип топлива: Diesel

ПОДРОБНОЕ ОПИСАНИЕ

Salon

Stainless sliding door leads into salon. To port is a large u-shaped beige leather sofa with storage beneath. There is a 2 shelved glass faced bookcase in the forward port corner as well as a brass clock and barometer. On the starboard side aft is a 3 shelved glass faced cabinet with storage for glasses. Within the cherry cabinetry is a refrigerator/freezer, an icemaker and the entertainment center.

- Bose surround sound
- JVC 32" TV
- JVC VCR
- Sony digital satellite receiver
- Sony CD/DVD player DVP-NS57P
- DirecTV Satellite receiver
- Bose CD player w/ 6 disc magazine
- Rear electric window
- Silhouette blinds
- Drapes aft
- Air conditioning
- Beige carpeting with tan canvas runner
- Cruisenet WiFi

Galley

The galley is up and opens to the salon and dinette and is opposite the formal dining area. Top of the line equipment, Generated on 8/6/2015 by Yatco Admin Proud Member of OCTOBER PRINCESS Page 2 of 34 cherry cabinetry with abundant storage and lots of counter space make for a great cooking area.

- Double stainless steel sink
- Frigidaire dishwasher
- Sharp carousel microwave convection oven
- Neff four burner ceramic top stove
- 2 SubZero drawer freezers
- 2 SubZero drawer refrigerators
- Neff range hood
- Air conditioning controls
- Electric door to deck
- Hidden trash receptacle
- Central vacuum

Master Stateroom

The full width master stateroom is located amidship with cherry cabinetry on both sides with multiple drawers, cabinets and glass cabinets. The vanity on the starboard side is cherry with leather inset with a power lift mirror and beige leather chair. On the starboard side of master is a private office with built in cherry desk, overhead lighting and a great deal of storage.

- Centerline queen berth with drawers below
- Night stand reading lamps
- Forward mirrored bulkhead
- Intercom/landline/sat/cell/phone
- Built-in port and starboard beige leather seats with storage beneath
- Sharp 14" Flatscreen TV with Phillips DVD player
- DirecTV satellite receiver on powered lift
- Overhead emergency escape hatch opens to galley
- Built-in cherry dresser
- Vanity with power up/down mirror
- Port and starboard hanging lockers
- Office with desk and drawers
- Safe MB Quartz AM/FM/CD player
- Mini blinds and curtains
- (4) Opening port lights
- Air conditioning controls

Master Head

- Vacuflush head
- Bidet
- Full tub with folding glass enclosure
- Opening port light
- Silhouette blinds
- Mirrored aft bulkhead
- Stainless grab rail by tub
- Granite patterned sole

VIP Stateroom

- Centerline queen with drawer storage beneath
- Phone jack

- Coby 14" Flatscreen TV with DVD Player
- JVC VCR
- (2) Opening port lights
- Cherry cabinetry on both sides of cabin for storage
- Reading lights
- Large hanging locker
- Mirrored forward bulkhead
- JVC AM/FM/CD player
- Air conditioning controls
- Overhead lighting
- Large round hatch above bed with shade and screen opens to foredeck

VIP Head

- Vacuflush head
- Circular shower stall with exhaust fan
- Clothes hamper
- Mirrored cabinets
- Opening port light

Guest Stateroom Port

- 2 Twin berths with cherry night table between
- JVC AM/FM/CD player
- Sharp 19" Flatscreen TV with DVD player
- Drawer storage below berths
- Private door to head and shower
- Cabinet storage next to port berth
- Custom bed spreads
- Accent pillows
- Large hanging locker
- Ultra suede headboard
- 2 Opening port lights
- 2 Reading lights
- Overhead lights
- Curtains
- Recessed rope lighting

Guest Stateroom Starboard

- 2 Twin berths with cherry night table between

- JVC AM/FM/CD player
- Sharp 19" Flatscreen TV with DVD player
- Drawer storage below berths
- Cabinet storage next to port berth
- Custom bed spreads
- Accent pillows Large hanging locker
- Ultra suede headboard
- 2 Opening port lights
- 2 Reading lights
- Overhead lights
- Recessed rope lighting

Guest Head

Opens to the port guest cabin and to the hallway to serve as the day head.

- Vacuflush head
- Circular shower stall with exhaust fan
- Clothes hamper
- Mirrored cabinets
- Opening port light

Crew Quarters

Access to the crew's quarters/engine room area is from the aft deck to starboard. Crew's quarters is aft of engine room for quick access to machinery.

- Upper and lower berths with reading lamps
- Intercom/landline/sat/cell/phone
- Air conditioning controls
- Hanging locker
- Jensen AM/FM stereo with CD player
- Sony VCR
- Head with shower (wet head)
- Combomatic 6000 washer/dryer to port
- Overhead escape hatch
- Access to aft lazarette

Aft Deck

The large covered aft deck with comfortable seating is a great spot for cocktails or meals while at the dock or at anchor. There are locker doors on both sides of the forward aft deck with storage to

port and stairs to engine room and crew quarters to starboard.

- Teak decks
- Teak bench seats w/navy blue cushions (new seats Nov. 2014)
- Teak table w/compass rose inlay
- 2 Teak folding chairs
- 2 Electric Lewmar snugging winches each corner aft
- Access to garage beneath port side bench seat
- Aft deck Micro-Commander control station w/30' cord
- Passerelle controls
- Cablemaster controls
- Large swim platform with stainless steel u-rails (new teak Nov. 2014)
- Stainless steel folding swim ladder
- Teak stairway to starboard leads to boat deck through large sliding hatch
- Access hatch to crew quarters Sharp 19" Flatscreen TV

Deck Equipment

- Hidden Passerelle
- Fresh water wash down
- Full walk around teak decks with deck lighting (new Nov. 2014)
- Stainless cleats and safety rails
- Built in lockers port and starboard on foredeck
- Stainless walkway safety gates amidship
- Lewmar 3000 Windlass w/250' 1/2" chain and 88 lb plow anchor
- Windlass remote control
- 3 windshield wipers w/squirters
- 2 wet lockers recessed in foredeck
- Hydraulic garage door

Flybridge

The flybridge can be accessed from a circular stairway on the starboard side of the forward salon or from a stairway on the starboard side of the aft deck. The flybridge has bench type seating on either side of center helm chair forward. Aft of the helm area to port is a large seating area with storage beneath wrapping 3/4 around a fiberglass hi/lo table with folding leaves. This large comfortable area has seating for 7 and including the helm area there is easily seating for 12. This is a wonderful area for socializing while underway.

- Tilt steering
- Adjustable Stidd helm seat
- Port seating with storage beneath
- Tinted wind screen with stainless steel rail (new Nov. 2014)

- Recessed electronics console on power lift
- Bimini top
- U-shaped seating with storage below
- Hi-lo table with folding leaves
- Stainless safety gate between main bridge and boat deck
- Givens 10 man canister liferaft with hydrostat release
- ACR-EPIRB 406 MHz
- Besenzoni 24 volt 1000 lb. low profile davit (rebuilt 2014)
- KVH Trac Vision G4 TV dome antenna
- Built-in stainless steel sink
- Fiberglass/stainless steel Euro-style arch
- Fire extinguisher

Electrical System

- (1) Newmar battery charger
- (2) ISO Boost 50 marine isolation power transformers
- 240 V AC/ 120 V DC electrical system
- (6) auto/manual bilge pumps
- (2) 50 Amp 75 shore cords on Glendinning cable masters
- 24 V / 12 V DC electrical system

Electronics and Navigation

Flybridge:

- New Furuno Nav Net 3D (2011)
- (2) 12" MFD Screens (2011)
- New GPS Antenna
- New Furuno Open Array
- Sanshin HR 1012 searchlight controls
- ICOM IC M422 VHF
- New Furuno Autopilot (2011)
- Autohelm Masterview (speed, depth, heading)
- Sidepower bow thruster control
- New Furuno wind instrument
- Sirius Weather
- Engine start/stop
- Sony AM/FM CD player & Ipod Player
- Trim tab controls

Lower Helm:

- Furuno Nav Net 3D
- (2) 12" MFD displays
- Raytheon ST 80 Masterview (speed, depth, heading)
- Full VDO engine instrumentation
- Sea Fire engine shut down override system
- Door to deck (manual dog down)
- Sanshin HR-1012 search light controls
- Ceiling mounted compass
- Flowscan tachs
- ICOM M45 VHF
- Furuno multifunction display
- Furuno wind display Furuno Nav Pilot
- Side power bow thruster
- Sirius weather
- Volume control for MFD 12 video
- Phone set - Panasonic telephone / intercom system
- Loud speaker / foghorn control

Tenders

- 12' Nautica hard bottom inflatable with full cover and new cushions (new tubes & powdercoat Nov. 2014)
- 40 HP Yamaha 4 stroke outboard
- Yamaha single lever controls
- Standard Horizon Eclipse VHF
- Navigation & anchor lights
- Bilge pump
- Ritchie compass
- Grab rails are laced with white leather
- Side console helm
- Danforth anchor rode and line

Engine /Mechanical Equipment

- (2) Village Marine 600 GPD watermakers
- Sea Fire automatic fire suppression system
- Onan 27.5 kW generator -- 3837 hours
- Dual Racor fuel filter/water separator w/vacuum gauge; port and starboard
- Fresh water washdown
- 2 engine room blowers
- IDRO Eco Jet autoclave water pressure system
- Panasonic telephone/intercom system

- Engine room sound insulation
- Overhead lighting
- Engine block heaters
- Five zone oil change pumpout Generated on 8/6/2015 by Yatco Admin
- AXIS "PTZ" Cameras

Broker's Remarks

In the fall of 2014, considerable improvements were under taken for this exceptional sport cruiser.

- Emron paint job by Lou Marine
- Bottom paint (Micron CSC) to include prop speed
- New teak decks (excluding cockpit)

October Princess shows extremely well and is most seriously for sale

.

Исключения

При продаже яхты исключаются личные вещи владельца.

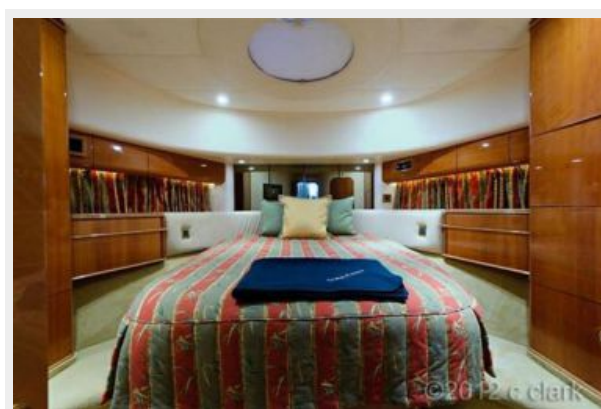
Отказ от ответственности

Компания предоставляет описание судна или яхты добросовестно, но не может гарантировать точность этой информации, а также не ручается за техническое состояние. Покупатель должен проинструктировать своих агентов или оценщиков исследовать представленную информацию более подробно, по собственному желанию. Продажа судна или яхты, изменение цены или снятие с продажи будет происходить без предварительного уведомления.

ФОТОГРАФИИ

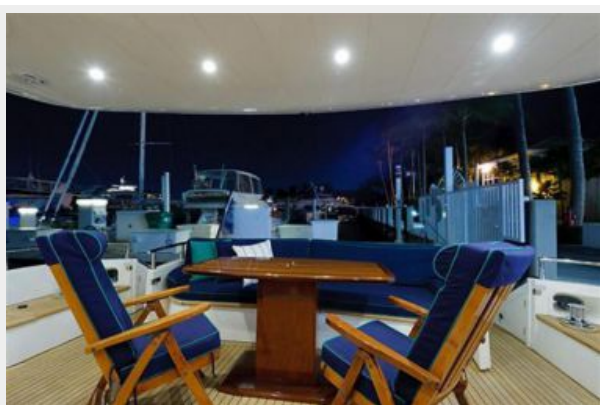


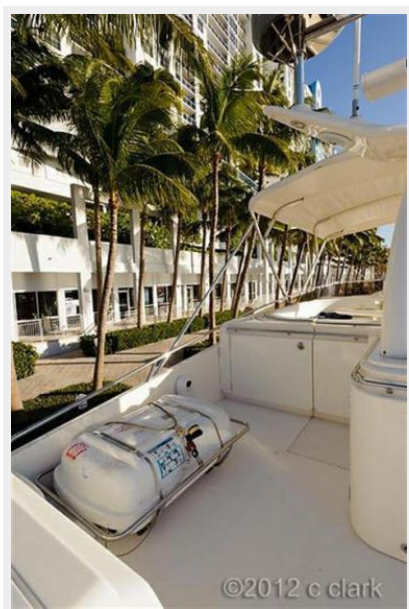


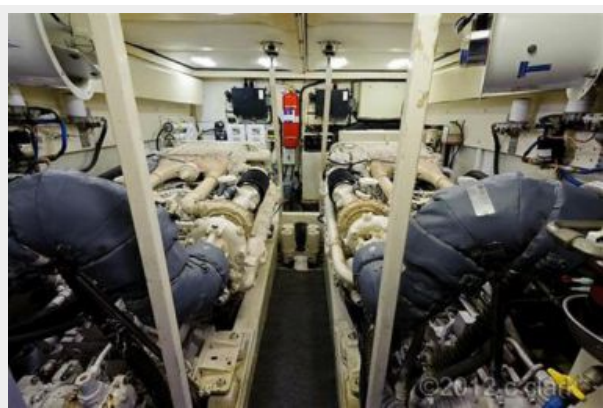




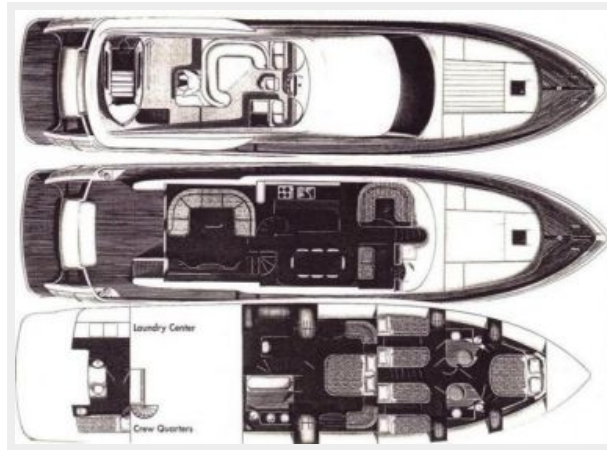












КОНТАКТЫ

Андрей Шестаков (Andrey Shestakov) – ведущий яхтенный брокер отдела продаж яхт и судов компании Shestakov Yacht Sales Inc. Официальный представитель Shestakov Yacht Sales Inc. для русскоговорящих клиентов в центральном офисе компании в Майами/Форт Лодердейл/Флорида/США.

Контактная информация

Email: andrey@shestakovyachtsales.com

Web: shestakovyachtsales.com

Телефоны

Краснодарский край: **+7(918)465-66-44**

США, Майами, Флорида: **+1(954)274-4435**

Время работы

Понедельник – Суббота: **9:00 - 21:00**
EDT

Воскресенье: **Закрито**

Адрес



Harbour Towne Marina, 850 NE 3rd St,
STE 213, Dania, FL 33004