

PATTI MARIE — BENETEAU



Builder: BENETEAU

Year Built: 1997

Model: Cruising Sailboat

Price: PRICE ON APPLICATION

Location: United States

LOA: 40' 0" (12.19m)

Beam: 12' 9" (3.89m)

Min Draft: 5' 6" (1.68m)

Our experienced yacht broker, Andrey Shestakov, will help you choose and buy a yacht that best suits your needs **Patti Marie — BENETEAU** from our catalogue. Presently, at Shestakov Yacht Sales Inc., we have a wide variety of yachts available on our sale's list. We also work in close contact with all the big yacht manufacturers from all over the world.

If you would like to buy a yacht **Patti Marie — BENETEAU** or would like help answering any questions concerning purchasing, selling or chartering a yacht, please call **+1(954)274-4435**

TABLE OF CONTENTS

TABLE OF CONTENTS	2
SPECIFICATIONS	5
Overview	5
Basic Information	5
Dimensions	5
Speed, Capacities and Weight	5
Accommodations	6
Hull and Deck Information	6
Engine Information	6
DETAILED INFORMATION	7
Description	7
Accommodations	7
Galley	7
Sails & Rigging	7
Electronics/Navigation	8
Deck Equipment	8
Mechanical	8
Electrical	8
Exclusions	8
Disclaimer	9
PHOTOS	10
Underway	10
Salon	10
Raised dinette table	10
Nav desk	10
Galley in passageway	10
Galley view 2	11
Generous refrigeration	11

Centerline master berth!	11
view 2	11
Aft cabin view 2	11
Lockers and storage	11
Ensuite master head and shower	12
Forward guest cabin seat	12
Pullman berth	12
Under berth drawers	12
Guest head and shower in V	13
Safety equipment	13
Yanmar engine	13
Good access panels	13
Stern access	13
Stern view sister ship	13
In yard storage	14
Davits and solar panels	14
Electric windlass	14
Headsail in bag	14
Mast	14
Cockpit sistership	14
Center cockpit and aft deck	15
Keel freshly painted	15
Prop	15
Dingy	15
In yard storage	15
CONTACTS	16
Contact details	16
Telephones	16
Office hours	16

Address

16

SPECIFICATIONS

Overview

Great sailing vessel with a spacious center cockpit and walk thru transom with swim steps. The rare center cockpit version provides a great interior layout. Sleeps 6 in air conditioned comfort in this 2 cabin/2 head layout. Generous master cabin with an island queen berth, pullman double guest berth, each with private head. Comfortable cruising with in mast furling main and roller furling genoa! Sails in good condition. Easy line handling with lines leading to cockpit and controlling lines within easy reach of the helmsman. Many valuable cruising features include: New Garmin 1020 (2015), Radar, GPS, Autopilot, Kyocera Solar Panel, Air Conditioning, Folding Prop, Electric windlass, Kato dingy davits, aluminum bottom dingy and a full cockpit enclosure. *Located in Fort Pierce, Florida*

Basic Information

Category: Cruising Sailboat

Sub Category: Center Cockpit

Model Year: 1997

Year Built: 1997

Country: United States

Dimensions

LOA: 40' 0" (12.19m)

LWL: 36' 9" (11.20m)

Beam: 12' 9" (3.89m)

Min Draft: 5' 6" (1.68m)

Clearance: 52' 7" (16.03m)

Speed, Capacities and Weight

Displacement: 18740 Pounds

Water Capacity: 125 Gallons

Holding Tank: 30 Gallons

Fuel Capacity: 52 Gallons

Accommodations

Total Cabins: 2

Total Heads: 2

Hull and Deck Information

Hull Material: Fiberglass

Engine Information

Engines: 1

Manufacturer: Yanmar

Model: 4JH2HE

Engine Type: Inboard

Fuel Type: Diesel

DETAILED INFORMATION

Description

Great sailing vessel with a spacious center cockpit and walk thru transom with swim steps. The rare center cockpit version provides a great interior layout. Sleeps 6 in air conditioned comfort in this 2 cabin/2 head layout. Generous master cabin with an island queen berth, pullman double guest berth, each with private head. Comfortable cruising with in mast furling main and roller furling genoa! Sails in good condition. Easy line handling with lines leading to cockpit and controlling lines within easy reach of the helmsman. Many valuable cruising features include: New Garmin 1020 (2015), Radar, GPS, Autopilot, Kyocera Solar Panel, Air Conditioning, Folding Prop, Electric windlass, Kato dingy davits, aluminum bottom dingy and a full cockpit enclosure. The boat is currently stored on the hard for the summer in Fort Pierce, Florida.

Accommodations

Enter the companionway thru custom saloon-style doors which leads to the salon. The U shaped settee and dining table are on a raised cabin sole to starboard, which provides a seaview. Opposite you find the Navigation desk with upholstered seat and sizable locker. The guest cabin forward has a Pullman double berth to starboard and upholstered bench opposite. The guest head and shower is in the V. The double sided Galley is to port behind the Nav station in the passageway leading to the aft stateroom. The master cabin is aft and has a walk around queen sized island berth with nightstand tables on each side, vanity/desk with mirror and lockers. The ensuite master head has a sink and separate shower. • Green upholstered settee and nav seat • Raised platform Dining area with sea view thru fixed ports • Inboard drop leaf dining table • Teak and holly sole • Beautiful cherrywood veneer interior wood joinery • Bookcase, cabinets • Numerous hanging lockers, drawers and storage spaces • Lewmar opening hatches • Opening ports w/curtains • Brass clock and barometer • Reading lights • Curved entry stairs • Lexan sliding opening companionway hatch

Galley

• Double sided galley • Deep SS double sink • H/C Pressure water system • Saltwater footpump • Force 10 (2) burner gimbaled LPG stove and oven • Solenoid switch • Frigoboat refrigerator top loading • Frigoboat Freezer top loading • GE Microwave • White laminate countertops • Storage cabinets, drawer and extra inboard counter top • 2 opening ports and hatch for good ventilation in galley

Sails & Rigging

• In mast furling mainsail (refurbished 2010) • Roller furling system • 140% Genoa (refurbished

2013) • Sails in good condition • (2) Lewmar 48 ST primary winches • Lewmar 44 ST winch on coach roof • Lewmar 40 ST mainsheet winch • Lines lead to cockpit thru line cleats • Traveller behind helm • Aluminum mast and boom • Double swept back spreaders • Solid boom vang • SS wire standing rigging

Electronics/Navigation

• NEW Garmin 1020 GPS (2015) • Autohelm ST6000 Autopilot • Autohelm ST 50 Radar • Radar mount on backstay • Autohelm Wind Instrument • Autohelm Tridata depth/log/speed • Plastimo compass • Standard Horizon VHF radio • Stereo/Cassette player • Speakers

Deck Equipment

• Lewmar electric windlass w/ chain and rode gypsy • 45# CQR anchor w/50' 7/16" chain and 150' 5/8" nylon rode • SS anchor roller • Divided anchor locker • Open SS bow pulpit • Green Sunbrella Dodger/Bimini and Full enclosure • Kato dingy davits w/ mount for solar panel • Aquapro aluminum bottom dingy • 6hp Yamaha outboard • SS stern rail with stern gate • Edson outboard mount on stern rail • Walk thru transom with molded teak inlay steps • Swim ladder • Center cockpit seating w/ teak inlay • Cockpit table • Lazarette storage in stern quarterdeck • SS safety bars around mast • Dorade vents • Teak handrails on cabin top • Teak cap rail • Teak rub rail • SS stanchions • Lifelines and side gates • Non skid decks • Lifesling • Horseshoe buoy

Mechanical

• Excellent all around engine access • Yanmar 50 hp engine 4JH2HE, 1046 hours • Kanzaki transmission • Whitlock hydraulic steering • Dripless stuffing box • Racor filter • New aluminum diesel tank 2006 built above specs • Autoprop folding propeller • Spare 3 bladed fixed prop • Mermaid 8000 btu air conditioning unit aft (no heat) • Mermaid 16000 btu reverse cycle air conditioning unit (8/2013) • 11 gal Hot water heater • (2) manual heads • New head hoses(2015) • Bilge pumps

Electrical

• (2) Start batteries (2011) • (2) 4D House batteries (2011) • Battery selector switch • Sentry 40 Battery Charger • 125 W Kyocera Solar Panel (2007) • Solar controller • (2) 30 amp shore power inlets on transom • (2) 30 amp shore power cords • GFCI outlets

Exclusions

Owner's personal belongings.

Disclaimer

The Company offers the details of this vessel or yacht in good faith but cannot guarantee or warrant the accuracy of this information nor warrant the condition of the vessel. A buyer should instruct his representatives, agents, or his surveyors, to investigate such details as the buyer desires validated. This vessel or yacht is offered subject to prior sale, price change, or withdrawal without notice.

PHOTOS

Underway



Salon



Raised dinette table



Nav desk



Galley in passageway



Galely view 2



Generous refrigeration



Centerline master berth!



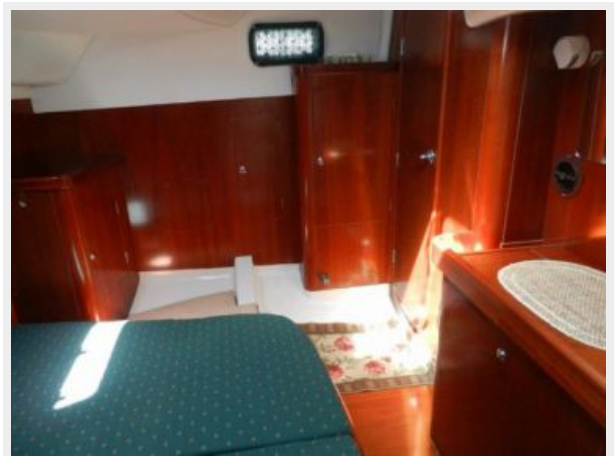
view 2



Aft cabin view 2



Lockers and storage



Ensuite master head and shower



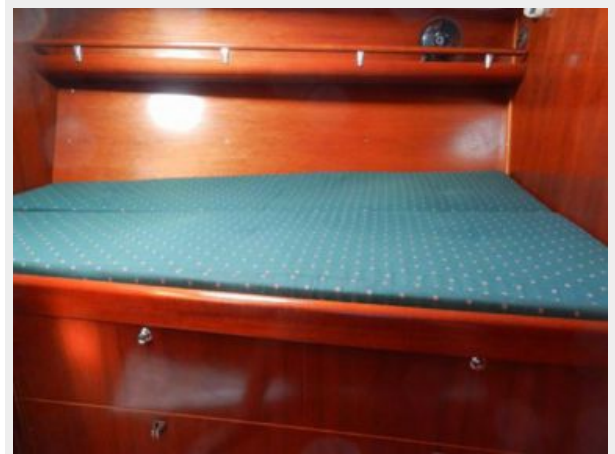
Forward guest cabin seat



Pullman berth



Under berth drawers



Safety equipment



Guest head and shower in V



Yanmar engine



Good access panels



Stern access



Stern view sister ship



In yard storage



Davits and solar panels



Electric windlass



Headsail in bag



Mast



Cockpit sistership



Center cockpit and aft deck



Keel freshly painted



Prop



Dingy



In yard storage



CONTACTS

Andrey Shestakov, leading yacht broker of the sales department of Shestakov Yacht Sales Inc. Shestakov Yacht Sales Inc., the official representative of the Miami/Fort Lauderdale FL headquarters.

Contact details

Email: andrey@shestakovyachtsales.com

Web: shestakovyachtsales.com/en/

Telephones

USA: +1(954)274-4435

Office hours

Monday – Saturday: **9:00 - 21:00** EDT

Sunday: **closed**

Address



Harbour Towne Marina, 850 NE 3rd St,
STE 213, Dania, FL 33004