

COASTAL ZEPHYR — NORDLUND



Судостроитель: NORDLUND

Год постройки: 1995

Модель: Моторная яхта

Цена: **ЦЕНА ЯХТЫ ПО ЗАПРОСУ**

Местонахождение: United States

Длина общая: 65' 0" (19.81m)

Ширина: 18' 0" (5.49m)

Мин. осадка: 5' 0" (1.52m)

Крейс. скорость: 13 Kts. (15 MPH)

Макс. скорость: 21 Kts. (24 MPH)

Купить Coastal Zephyr — NORDLUND а также выбрать подходящую вам яхту из нашего каталога яхт вам поможет опытный яхтенный брокер Андрей Шестаков. На сегодняшний день компания Shestakov Yacht Sales Inc. имеет большое количество яхт в собственном списке продаж, а также тесно сотрудничает со всеми крупными яхтенными производителями по всему миру.

Для того чтобы купить яхту Coastal Zephyr — NORDLUND а также проконсультироваться по любому вопросу связанному с покупкой, продажей, чартером яхт позвоните по телефону **+7(918)465-66-44**.

ОГЛАВЛЕНИЕ

ОГЛАВЛЕНИЕ	2
ХАРАКТЕРИСТИКИ	3
Обзор	3
Основная информация	3
Размеры	3
Скорость, вместимость и масса	3
Размещение	3
Корпус и палуба	4
Информация о двигателе	4
ПОДРОБНОЕ ОПИСАНИЕ	5
Specifications	5
Исключения	6
Отказ от ответственности	7
ФОТОГРАФИИ	8
КОНТАКТЫ	13
Контактная информация	13
Телефоны	13
Время работы	13
Адрес	13

ХАРАКТЕРИСТИКИ

Обзор

"Coastal Zephyr" has been professionally maintained to a very high standard. She has been kept in a boat house in fresh water for the last seven years, and with many upgrades keeps it in "Excellent Condition". This is a very good value and won't be on the market long.

Its interior is tastefully done in varnished teak with particular attention paid to ensure that even the wood grains match throughout the entire vessel. The pilothouse is light and airy with a cruising dinette which is where most of the underway time is spent. From the salon there is an unobstructed view all around. The galley is open and efficient and all accommodations are very at home comfortable. ***125' Boathouse also available for sale.**

Основная информация

Тип судна: Моторная яхта

Модельный год: 1995

Год постройки: 1995

Страна: United States

Размеры

Длина общая: 65' 0" (19.81m)

Ширина: 18' 0" (5.49m)

Мин. осадка: 5' 0" (1.52m)

Скорость, вместимость и масса

Крейс. скорость: 13 Kts. (15 MPH)

Макс. скорость: 21 Kts. (24 MPH)

Водоизмещение: 69000 Pounds

Вместимость воды: 230 Gallons

Вместимость сточного бака: 130 Gallons Объем топливного бака: 1120 Gallons

Размещение

Всего кают: 3

Корпус и палуба

Материал корпуса: Fiberglass

Информация о двигателе

Двигатели: 2

Производитель: Detroit Diesel

Модель: 6V92TA

ПОДРОБНОЕ ОПИСАНИЕ

Specifications

SALON Lounge with coffee table. Entertainment center to port and provision for TV with overhead speakers and speakers in pilothouse with local controls and Sea Hornet monitor. Windows have full hidden blinds and sole is fully carpeted with pad throughout the boat except galley and pilothouse which is teak and holly. Newly updated upholstery and carpet in 2014.

GALLEY One step up from salon to galley with Sub-Zero 110v refrigerator freezer with icemaker with face matching decor. Gaggenau four burner electric stove and microwave oven mounted in overhead cabinets. Dish washer. Insulated and sheathed space. Mixer faucet with sprayers, instant hot water and garbage disposal. 12v Halogen and 110v lighting with local switching. Chest of drawers for utensils, racks for plates and Corian counter tops. Blind with valance board with recessed lighting and courtesy lighting under toe space. Décor of varnished teak cabinets, valance and trim. Buffet counter top of high-pressure laminate. Trash compactor and separate icemaker.

PILOTHOUSE Two steps up bring you to the pilothouse with raised cruising dinette with varnished teak table. Chart storage under platform. Full control station with varnished teak helm, digital tachometers, temperature for engine and transmission, oil pressure, hydraulic steering, MMC electronic controls, electronic compass, rudder angle indicator, fuel level indicators, intermediate windshield wipers (3) with hashers and windshield defog fans. Overhead electronics console with removable teak face. Counter top dash in matte Formica and console of varnished teak. Remote stereo speakers in overhead.

MASTER STATEROOM Queen size berth with drawers underneath and night stands on each side of berth. A bureau with chest of drawers forward and cedar lined hanging wardrobe locker with automatic lights aft. Cabinet with bookcase above the berth. Shelf for mounted TV. Datamarine depth and windspeed indicators and Sea Hornet monitor adjacent to berth. A passageway from master stateroom leads aft into engine room and passes through a utility room with washer/dryer and storage locker.

MASTER HEAD Simulated marble counter top, wash basins and separate fiberglass stall shower.

VIP STATEROOM Queen size berth with drawers under and shelves to port and starboard. Cedar lined wardrobe hanging locker to starboard. Hatch provides natural light and décor of painted wood cabinets, valance and trim. Bulkheads finished in wallpaper with opening ports to screens.

GUEST STATEROOM Twin berths separated by bureau with drawers under each berth with hatch for natural light. Full height cedar lined wardrobe hanging locker.

GUEST HEAD Simulated marble counter top with drawers under. Toilette locker with shelves.

Fiberglass stall shower with door. Reversible function ventilator above shower. Microphar marine head plumbed to fresh water system going to holding tank.

FLYBRIDGE & BOAT DECK Access to the flybridge and boat deck is by stairs from the pilothouse or from the ladder leading from the aft deck. Custom built seating, outside helm, and wet bar with davit installed for lifting dingy. Radar arch with antenna and lights mounted. Custom Cabinet with built in BBQ.

ENGINE ROOM The engine room is located a step down and aft of the master stateroom with access through a watertight bulkhead door. Large lazarette for storage aft of engine room which is separated by a watertight door.

MACHINERY · (2) Detroit Diesel 6V92TA turbocharged main engines @ 550 hp each. both engines have been overhauled, 600 hours on starboard and Port has less than 100 hours. Total hours on vessel is 1731. · CCD 5091U transmissions w/flexible couplings · Trolling valves on transmissions · Espar diesel heaters (2) · Engine room CO2 automatic fire extinguishing system · Engines and generators plumbed with 12v oil changing pump · Tankage · Fuel tanks (2) 560 gal ea. - 1,120 gallons aluminum · Water tanks (2) 135 gal ea. - 270 gallons aluminum · Holding tank with macerator - 130 gallons aluminum · 30 gallon water heater · Tank Tender tank monitoring system · Watermaker (2012)

ELECTRONICS · Data Marine Windspeed Indicator · Depth · Speed/Fog · ICOM- M47 VHF · 2 Furuno Navnet · Comnav Auto Pilot 2001 with Rudder Angle Indicator · Hanjin LHS · HD Radio

ELECTRICAL · Northern Lights generators; Starboard: 20 kw Model # M844L (854 hours) Port: 12 kw Model # M843N with separate start batteries (1,029 hours) · 150 amp alternators (2) · Ratelco 40 amp 12 volt battery charger · 2500 watt Trace inverter · 120/240 50 amp shore power · 8 8-D ship service batteries · 4 8-D anchor windlass/bow thruster batteries · Separate engine start batteries · Dock phone & cable TV connectors · 4 separate electric heaters · 12,000 BTU heat/air conditioning system in pilothouse

HULL & DECK · Wesmar 24v bow thruster · Automatic FE-241 CG2-370 fire extinguisher in bow thruster compartment · Maxwell 3500 vertical capstan/windlass · 2 anchors Forjford (primary) in bow roller, Danforth (secondary) in anchor locker · 300' chain w/chain stopper · 300' 3/4" braid rode · 2 1/2 SS Aquamet 22 shaft w/PSS shaft seals · 34" four blade props · 1,500 lb electric dingy davit · Central vacuum system w/3 outlets · Air operated Microphor fresh water marine heads (2) · On board burglar alarm system · White-Westinghouse Spacemaster III electric washer/dryer · 11' Aqua Pro Aluminum Bottom Inflatable tender (2004) with 25 HP Honda Outboard

EXCLUSIONS:

Personal items including dishes. Seller would like to reserve the name of the vessel "Coastal Zephyr"

Исключения

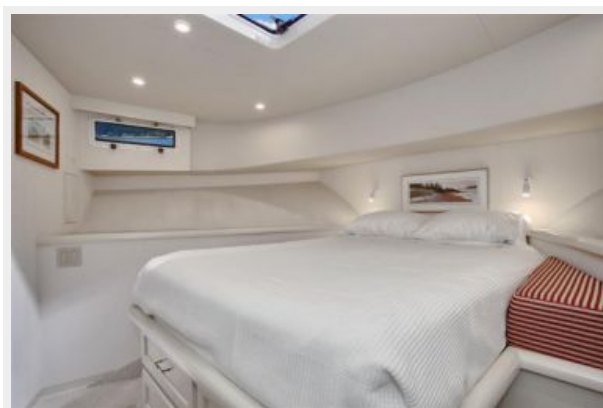
При продаже яхты исключаются личные вещи владельца.

Отказ от ответственности

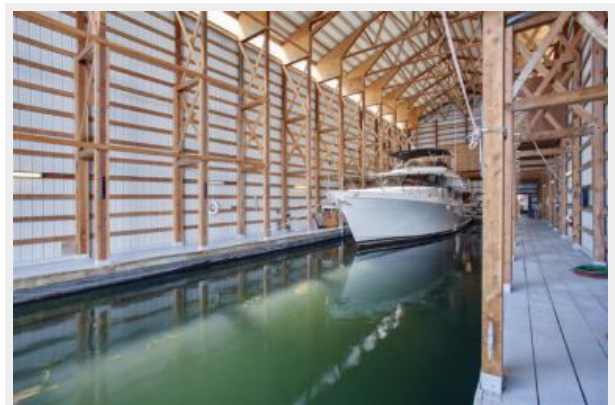
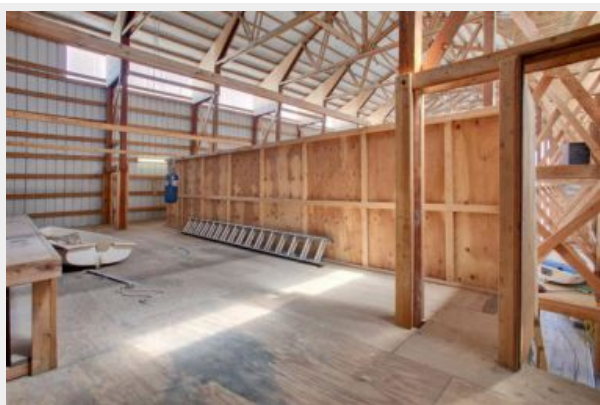
Компания предоставляет описание судна или яхты добросовестно, но не может гарантировать точность этой информации, а также не ручается за техническое состояние. Покупатель должен проинструктировать своих агентов или оценщиков исследовать представленную информацию более подробно, по собственному желанию. Продажа судна или яхты, изменение цены или снятие с продажи будет происходить без предварительного уведомления.

ФОТОГРАФИИ











КОНТАКТЫ

Андрей Шестаков (Andrey Shestakov) – ведущий яхтенный брокер отдела продаж яхт и судов компании Shestakov Yacht Sales Inc. Официальный представитель Shestakov Yacht Sales Inc. для русскоговорящих клиентов в центральном офисе компании в Майами/Форт Лодердейл/Флорида/США.

Контактная информация

Email: andrey@shestakovyachtsales.com

Web: shestakovyachtsales.com

Телефоны

Краснодарский край: **+7(918)465-66-44**

США, Майами, Флорида: **+1(954)274-4435**

Время работы

Понедельник – Суббота: **9:00 - 21:00**
EDT

Воскресенье: **Закрыто**

Адрес



Harbour Towne Marina, 850 NE 3rd St,
STE 213, Dania, FL 33004