

ALESSANDRA — JEFFERSON



Судостроитель: JEFFERSON

Год постройки: 1989

Модель: Моторная яхта

Цена: **ЦЕНА ЯХТЫ ПО ЗАПРОСУ**

Местонахождение: United States

Длина общая: 37' 0" (11.28m)

Ширина: 14' 5" (4.39m)

Мин. осадка: 3' 4" (1.02m)

Макс. осадка: 3' 4" (1.02m)

Крейс. скорость: 14 Kts. (16 MPH)

Макс. скорость: 16 Kts. (18 MPH)

Купить **ALESSANDRA — JEFFERSON** а также выбрать подходящую вам яхту из нашего каталога яхт вам поможет опытный яхтенный брокер Андрей Шестаков. На сегодняшний день компания **Shestakov Yacht Sales Inc.** имеет большое количество яхт в собственном списке продаж, а также тесно сотрудничает со всеми крупными яхтенными производителями по всему миру.

Для того чтобы купить яхту **ALESSANDRA — JEFFERSON** а также проконсультироваться по любому вопросу связанному с покупкой, продажей, чартером яхт позвоните по телефону **+7(918)465-66-44**.

ОГЛАВЛЕНИЕ

ОГЛАВЛЕНИЕ	2
ХАРАКТЕРИСТИКИ	5
Обзор	5
Основная информация	5
Размеры	5
Скорость, вместимость и масса	6
Размещение	6
Корпус и палуба	6
Информация о двигателе	6
ПОДРОБНОЕ ОПИСАНИЕ	7
Introduction	7
Vessel Walkthrough & Accommodations	7
Galley	7
Deck & Hull Equipment	8
Electrical	8
Navigation & Electronics Equipment	8
Mechanical	9
Исключения	9
Отказ от ответственности	9
ФОТОГРАФИИ	10
Aft Starboard Profile - Sundeck	10
Salon	10
Flybridge Station	10
Dinette, opposite Galley	10
Down Galley, on port	10
Master Stateroom	10
Forward Deck	11
Floor Plan	11

Deck Profile	11
Ground Tackle	11
Flybridge - full enclosure	11
Starboard Profile	11
Marquipt Tide Ride - boarding ladder	12
Aft Sundeck	12
Port Side Deck	12
Flybridge Helm	12
Flybridge Aft	12
Flybridge to port	12
Flybridge forward	13
Garmin Radar/GPS/Sonar and VHF's	13
Cummins Instrumentation	13
Datamarine Dart Digital Depth	13
Full Instrument Panel	13
450 Watt Solar Panel Array	13
Sundeck to aft	14
Sundeck forward	14
Sundeck Storage & Wet Bar	14
Salon modular Settee with lots of storage	14
Lower Helm	14
Salon Entertainment Center to port	14
Convertible Settee to starboard	15
Guest Shower Stall, on starboard	15
Guest Stateroom, forward	15
Guest Head to port	15
Aft Passageway to MSR	16
MSR - Large Island Berth	16
MSR Ensuite Head	16

MSR - Lots of Storage	16
Separate Shower - MSR Head	17
MSR forward and to stbd	17
Passageway to MSR - more storage	17
AC/DC Electrical Panel	17
Central Vacuum System	18
Running Gear	18
ONAN Genset with sound enclosure	18
Port Cummins Engine	18
Starboard Cummins Engine	18
Engine Room - aft	18
AC Compressors and Water Heater	19
Engine Room - forward	19
AGM Batteries	19
КОНТАКТЫ	20
Контактная информация	20
Телефоны	20
Время работы	20
Адрес	20

ХАРАКТЕРИСТИКИ

Обзор

Imported by Jefferson in the late 1980's, the 37 Sundeck combined a traditional teak interior with solid construction and contemporary styling. In most respects, the 37 is typical of most Taiwan yachts of her era. Construction is solid fiberglass hull, and her low deadrise semi-planing, solid fiberglass hull incorporates a (2) stateroom, galley down floor plan with a beautiful teak interior, a shower in the aft head and a standard lower helm station. Wrap around salon windows provide plenty of outside natural lighting. One of the more attractive features of the Jefferson 37 is her spacious, full-width aft deck. The flybridge is arranged with the helm mid-bridge and guest seating forward. A bow pulpit, radar arch and swim platform were standard.

The 250hp Cummins diesels will cruise the Jefferson 37 Sundeck at a modest 15-16 knots and deliver a top speed of just under 20 knots. Owner reports--engines run GREAT; reliable start-up! Pumps, hoses have been recently replaced. No teak decks to maintain; easy for couple to manage!

Основная информация

Тип судна: Моторная яхта

Подкатегория: Sundeck

Модельный год: 1989

Год постройки: 1989

Страна: United States

Открытая палуба мостика: Да

Размеры

Длина общая: 37' 0" (11.28m)

Длина по ватерлинии: 32' 6" (9.91m)

Ширина: 14' 5" (4.39m)

Мин. осадка: 3' 4" (1.02m)

Макс. осадка: 3' 4" (1.02m)

Скорость, вместимость и масса

Крейс. скорость: 14 Kts. (16 MPH)

Макс. скорость: 16 Kts. (18 MPH)

Водоизмещение: 27000 Pounds

Вместимость воды: 120 Gallons

Вместимость сточного бака: 35 Gallons

Объем топливного бака: 350 Gallons

Размещение

Всего кают: 2

Всего коек: 3

Всего ком. состава: 2

Корпус и палуба

Материал корпуса: Fiberglass

Комплектация корпуса: Monohull

Информация о двигателе

Двигатели: 2

Производитель: Cummins

Модель: 6BT5.9

Тип двигателя: Inboard

Тип топлива: Diesel

ПОДРОБНОЕ ОПИСАНИЕ

Introduction

ALESSANDRA has a "hands-on" knowledgeable Owner with an open checkbook policy to keeping his boat in dependable condition. He has gone through the boat from top to bottom to ensure that all systems are a go, and that both his and the next Owner's cruising experience is stress free. You will be impressed with her condition outside, inside, bilges and engine room. This is an Owner you would want to buy a boat from. She is taken care of the way you would want to take care of her yourself. She is turn-key and ready to go! They have cruised up and down the East Coast and thoroughly enjoy her, but they are now ready to move on to the next chapter in their lives.

Vessel Walkthrough & Accommodations

ALESSANDRA has the popular (2) stateroom layout. The Master Stateroom has a centerline marine queen berth, full head with large separate shower, lots of drawer & closet space. All wood is teak throughout. Salon has lower helm station to starboard. To port is the TV and storage for the entertainment system. There is a comfortable sofa & chair. The galley is (3) steps down, with full galley to port. with a convertible dinette that seats (6) to starboard. The Guest Stateroom forward has offset Queen to starboard with drawers and hanging lockers. The head is to port and a full shower to starboard. Aft deck has hardtop, full wet bar with sink. Large flybridge has seating for (6).

- Aft Master Stateroom with island queen berth
- Master ensuite Jabsco electric head with separate shower
- VIP Guest Stateroom forward with offset queen berth with new mattress and covering
- Forward Jabsco electric head and separate shower
- Convertible Dinette seats (6), sleeps (2)
- New Carpeting in Salon
- New Drapes throughout
- Custom modular "L" Sofa and barrel chair
- Built-in vacuum
- LG 32" flat screen color TV
- Pioneer AM/FM/CD player with Blue Tooth and USB port
- Aft Deck storage center with wet bar

Galley

- New 2015 Norcold refrigerator/freezer DE0061R
- 10 gallon Stainless hot water heater plumbed to port engine
- Galley Maid "Countess" 3-burner stove top

- New 2015 Dometic convection/microwave oven
- Large round stainless steel sink
- Black & Decker toaster oven
- Lots of drawers and storage space

Deck & Hull Equipment

Full Flybridge enclosure. Chain and rope Windlass. Full aft enclosure. Full lower station. All portholes replaced in 2003. Bottom painted 2015.

- Zodiac Cadet RIB 2012 8'3" with Torqeedo electric OB motor
- CQR Anchor with 15' 3/8" chain and 200' rode
- Electric windlass
- Bow pulpit and rails
- Fiberglass deck (no teak deck to maintain!)
- (3) New opening portlights (dinette & forward cabin)
- Fenders and lines
- Navigation lights
- Single electric remote control search light (remote rotating is not working)
- Covers and canvas
- Coast Guard approved safety package
- (2)cushioned chairs on aft deck
- New 2015 cutlass bearing on stbd side
- Stanchions all rebedded
- (5) Through-hull valves replaced

Electrical

- Cummins Onan 8 kW Generator (NEW 2012 - 366 hours)
- Minikota 3-bank battery charger
- (2) Marino 30 amp dockside electrical cables
- 12V Mastervolt AGM 160 amp/hr; (2) 8D (2013) House/Engine and (1) 4D (2014) starting battery for genset
- (3) 150 watt solar panels mounted on flybridge bimini top

Navigation & Electronics Equipment

- Garmin 741XS touch screen Radar/Chart GPS/Sonar (new 2015). All charts from Canada to Keys including Bahamas
- Robertson AP1-1 autopilot
- (2) Gemini 6" compass
- Data Marine Dart Digital Depth Sounder
- Jensen MCC8320 Stereo
- Icom M56 and Standard Horizon Intrepid VHF
- Furuno GP-31 GPS

- West Marine VHF680

Mechanical

- (2) Aqua Air reverse cycle air conditioning
- (2) bilge blowers
- (4) automatic bilge pumps
- Bridge controls
- Engine alarm
- Fuel shut-off valve
- X-Changer Lube oil storage & transfer system
- (2) Algae-X fuel cleaners
- (2) extra reconditioned propellers
- Hydraulic steering
- Glendinning Synchronizers (reported not working)
- Trim Tabs (reported not working)

Исключения

При продаже яхты исключаются личные вещи владельца.

Отказ от ответственности

Компания предоставляет описание судна или яхты добросовестно, но не может гарантировать точность этой информации, а также не ручается за техническое состояние. Покупатель должен проинструктировать своих агентов или оценщиков исследовать представленную информацию более подробно, по собственному желанию. Продажа судна или яхты, изменение цены или снятие с продажи будет происходить без предварительного уведомления.

ФОТОГРАФИИ

Aft Starboard Profile - Sundeck



Salon



Flybridge Station



Dinette, opposite Galley



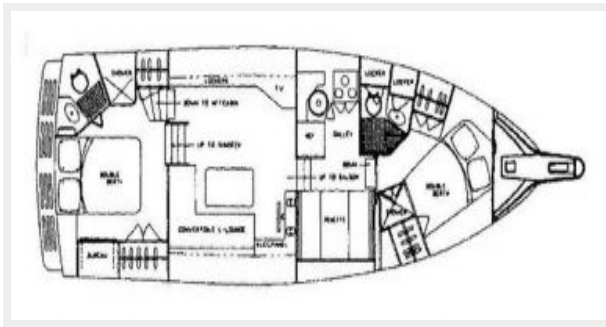
Down Galley, on port



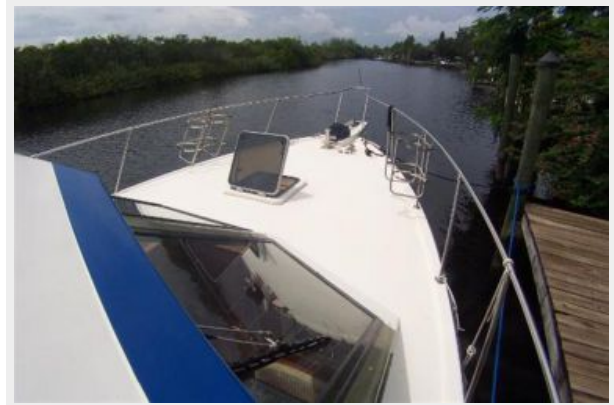
Master Stateroom



Floor Plan



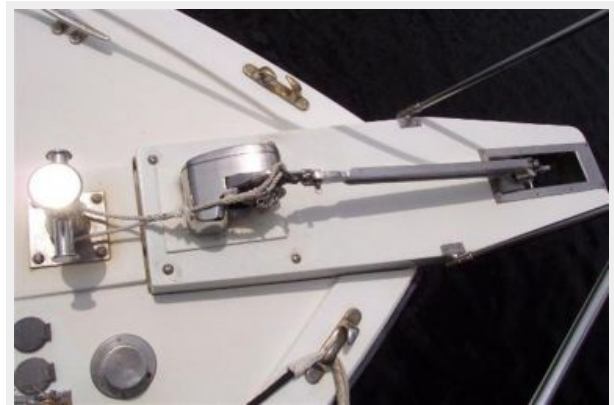
Forward Deck



Deck Profile



Ground Tackle



Flybridge - full enclosure



Starboard Profile



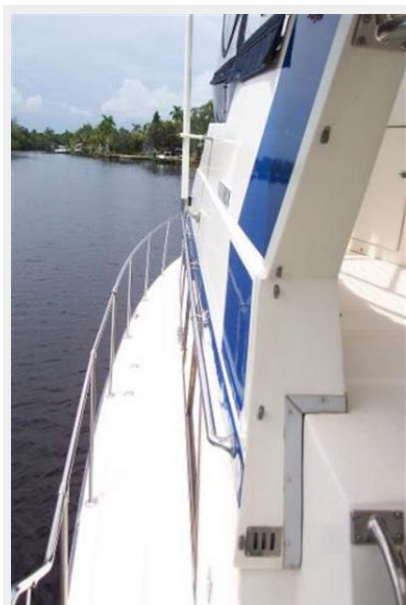
Marquipt Tide Ride - boarding ladder



Aft Sundeck



Port Side Deck



Flybridge Helm



Flybridge Aft



Flybridge to port



Flybridge forward



Garmin Radar/GPS/Sonar and VHF's



Cummins Instrumentation



Datamarine Dart Digital Depth



Full Instrument Panel



450 Watt Solar Panel Array



Sundeck to aft



Sundeck forward



Sundeck Storage & Wet Bar



Salon modular Settee with lots of storage



Lower Helm



Salon Entertainment Center to port



Convertible Settee to starboard



Guest Shower Stall, on starboard



Guest Stateroom, forward



Guest Head to port



Aft Passageway to MSR



MSR - Large Island Berth



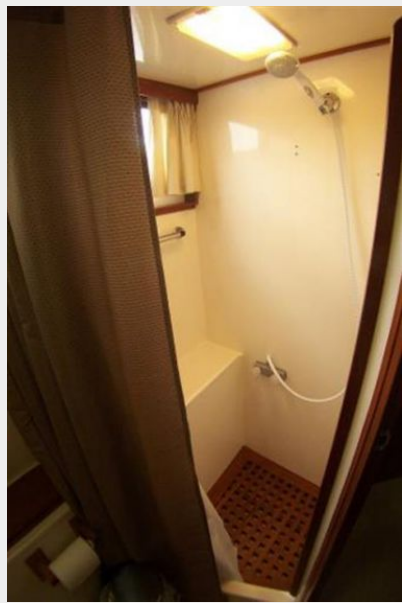
MSR Ensuite Head



MSR - Lots of Storage



Separate Shower - MSR Head



MSR forward and to stbd



Passageway to MSR - more storage



AC/DC Electrical Panel



Central Vacuum System



Running Gear



ONAN Genset with sound enclosure



Port Cummins Engine



Starboard Cummins Engine



Engine Room - aft



AC Compressors and Water Heater



Engine Room - forward



AGM Batteries



КОНТАКТЫ

Андрей Шестаков (Andrey Shestakov) – ведущий яхтенный брокер отдела продаж яхт и судов компании Shestakov Yacht Sales Inc. Официальный представитель Shestakov Yacht Sales Inc. для русскоговорящих клиентов в центральном офисе компании в Майами/Форт Лодердейл/Флорида/США.

Контактная информация

Email: andrey@shestakovyachtsales.com

Web: shestakovyachtsales.com

Телефоны

Краснодарский край: **+7(918)465-66-44**

США, Майами, Флорида: **+1(954)274-4435**

Время работы

Понедельник – Суббота: **9:00 - 21:00**
EDT

Воскресенье: **Закрито**

Адрес



Harbour Towne Marina, 850 NE 3rd St,
STE 213, Dania, FL 33004