

## MISS MOLLY — SILVERTON



**Builder:** SILVERTON

**Year Built:** 2007

**Model:** Cruiser

**Price:** PRICE ON APPLICATION

**Location:** United States

**LOA:** 33' 0" (10.06m)

**Beam:** 12' 7" (3.84m)

**Min Draft:** 2' 6" (0.76m)

**Max Draft:** 2' 6" (0.76m)

**Cruise Speed:** 20 Kts. (23 MPH)

**Max Speed:** 28 Kts. (32 MPH)

Our experienced yacht broker, Andrey Shestakov, will help you choose and buy a yacht that best suits your needs **Miss Molly — SILVERTON** from our catalogue. Presently, at Shestakov Yacht Sales Inc., we have a wide variety of yachts available on our sale's list. We also work in close contact with all the big yacht manufacturers from all over the world.

If you would like to buy a yacht **Miss Molly — SILVERTON** or would like help answering any questions concerning purchasing, selling or chartering a yacht, please call **+1(954)274-4435**

# TABLE OF CONTENTS

---

|   |    |
|---|----|
| TABLE OF CONTENTS                         | 2  |
| SPECIFICATIONS                            | 5  |
| Overview                                  | 5  |
| Basic Information                         | 5  |
| Dimensions                                | 5  |
| Speed, Capacities and Weight              | 5  |
| Accommodations                            | 5  |
| Hull and Deck Information                 | 6  |
| Engine Information                        | 6  |
| DETAILED INFORMATION                      | 7  |
| 33' Silverton Overview                    | 7  |
| 33' Silverton Vessel Walkthrough          | 7  |
| 33' Silverton Accommodations              | 7  |
| 33' Silverton Salon                       | 7  |
| 33' Silverton Galley                      | 7  |
| 33' Silverton Dining                      | 8  |
| 33' Silverton Master Stateroom            | 8  |
| 33' Silverton Guest Stateroom             | 8  |
| 33' Silverton Helm                        | 8  |
| 33' Silverton Cockpit                     | 8  |
| 33' Silverton Audio/Visual Equipment      | 8  |
| 33' Silverton Electronics                 | 9  |
| 33' Silverton Electrical System           | 9  |
| 33' Silverton Engine/Mechanical Equipment | 9  |
| 33' Silverton Deck Equipment              | 10 |
| 33' Silverton Safety & Fire Protection    | 11 |
| 33' Silverton Exclusions                  | 11 |
| 33' Silverton Disclaimer                  | 11 |

|  |    |
|--|----|
| Exclusions                               | 11 |
| Disclaimer                               | 11 |
| PHOTOS                                   | 12 |
| 33' Silverton Starboard Forward Profile  | 12 |
| 33' Silverton Forward Profile            | 12 |
| 33' Silverton Aft Profile                | 12 |
| 33' Silverton Swimplatform               | 12 |
| 33' Silverton Anchor Windlass            | 13 |
| 33' Silverton Foredeck                   | 13 |
| 33' Silverton Side Deck Photo1           | 13 |
| 33' Silverton Foredeck Aft               | 13 |
| 33' Silverton Port Side Deck Photo2      | 14 |
| 33' Silverton Starboard Side Deck Photo1 | 14 |
| 33' Silverton Starboard Side Deck Photo2 | 14 |
| 33' Silverton cockpit                    | 14 |
| 33' Silverton cockpit Port               | 15 |
| 33' Silverton Cockpit Starboard          | 15 |
| 33' Silverton Lazarrette Access          | 15 |
| 33' Silverton Salon Forward              | 15 |
| 33' Silverton Salon Aft                  | 15 |
| 33' Silverton Salon Port                 | 15 |
| 33' Silverton Salon Port Seating Photo1  | 16 |
| 33' Silverton Salon Port Seating Photo2  | 16 |
| 33' Silverton Salon Seating Storage      | 16 |
| 33' Silverton Salon Starboard Seating    | 16 |
| 33' Silverton Galley                     | 16 |
| 33' Silverton Helm Photo1                | 16 |
| 33' Silverton Helm Photo2                | 17 |
| 33' Silverton Master Stateroom           | 17 |

---

|                                     |           |
|-------------------------------------|-----------|
| 33' Silverton Head                  | 17        |
| 33' Silverton Gust Stateroom        | 17        |
| 33' Silverton Engine Compartment    | 18        |
| 33' Silverton Port Main Engine      | 18        |
| 33' Silverton Starboard Main Engine | 18        |
| 33' Silverton Oil Change System     | 18        |
| 33' Silverton Heating System        | 19        |
| 33' Silverton Water Heater          | 19        |
| 33' Silverton Generator Soundbox    | 19        |
| 33' Silverton Generator             | 19        |
| 33' Silverton Battery Charger1      | 20        |
| 33' Silverton Battery Charger2      | 20        |
| 33' Silverton Layout                | 20        |
| <b>CONTACTS</b>                     | <b>21</b> |
| Contact details                     | 21        |
| Telephones                          | 21        |
| Office hours                        | 21        |
| Address                             | 21        |

---

# SPECIFICATIONS

---

## Overview

---

Miss Molly is a 2 stateroom 33' Silverton Sport Coupe with bow and stern thrusters in very good condition. She has low hour engines and generator, plus numerous other upgrades that make her a great buy at a reduced asking price of only \$110,000!

## Basic Information

---

**Category:** Cruiser

**Sub Category:** Sport Cruiser

**Model Year:** 2007

**Year Built:** 2007

**Country:** United States

## Dimensions

---

**LOA:** 33' 0" (10.06m)

**LWL:** 28' 3" (8.61m)

**Beam:** 12' 7" (3.84m)

**Min Draft:** 2' 6" (0.76m)

**Max Draft:** 2' 6" (0.76m)

**Clearance:** 13' 0" (3.96m)

## Speed, Capacities and Weight

---

**Cruise Speed:** 20 Kts. (23 MPH)

**Max Speed:** 28 Kts. (32 MPH)

**Displacement:** 16300 Pounds

**Water Capacity:** 80 Gallons

**Holding Tank:** 30 Gallons

**Fuel Capacity:** 208 Gallons

## Accommodations

---

**Total Cabins:** 2

**Total Berths:** 4

**Sleeps:** 6

**Total Heads:** 1

---

## Hull and Deck Information

---

**Hull Material:** Fiberglass

**Deck Material:** Composite Fiberglass

**Hull Finish:** Plastic

---

## Engine Information

---

**Engines:** 2

**Manufacturer:** Crusader

**Model:** Captain's Choice 6.0MPI

**Engine Type:** Inboard

**Fuel Type:** Gas/Petrol

---

## DETAILED INFORMATION

---

### 33' Silverton Overview

---

Miss Molly is a 2 stateroom 33' Silverton Sport Coupe with bow and stern thrusters in very good condition. She has low hour engines and generator, plus numerous other upgrades that make her a great buy at a very competitive asking price of only \$129,000!

### 33' Silverton Vessel Walkthrough

---

Entering the salon through the double sliding stainless steel & glass doors, you will find a sofa with storage underneath and hi/lo table to port, the lower helm port forward, the galley starboard forward and a sleeper sofa with storage underneath to starboard. Step down into the guest foyer and you will find a guest stateroom to port, the head to starboard and the master stateroom forward. Engine room access is through a hatch in the salon sole. There is a light Cherry wood interior throughout.

### 33' Silverton Accommodations

---

Miss Molly offers a master stateroom forward with a queen size berth and a guest stateroom to port with side by side berths that convert into a queen size berth. The head is to starboard. The salon starboard sofa converts into a berth also.

### 33' Silverton Salon

---

The open and airy salon offers a sofa with storage underneath and hi/lo table to port and a sleeper sofa with storage underneath to starboard. There are screen doors in addition to the double sliding aft stainless steel & glass doors and a VistaAire retractable sky light with inside screen and exterior cover. Hinged side windows open aft with screens.

### 33' Silverton Galley

---

The galley is located starboard forward in the salon.

- Norcold refrigerator/freezer
- Princess Euro kera electric 1-burner ceramic cooktop
- Tappan microwave oven
- Solid surface countertop

- Deep molded sink
- Norcold refrigerator/freezer in the cockpit

---

## **33' Silverton Dining**

---

Dining space is available at the salon hi/lo table.

---

## **33' Silverton Master Stateroom**

---

The master stateroom is located forward and offers a queen size berth, overhead deck hatch, carpet, hanging locker and storage drawers and cabinet. the head is just aft of the master stateroom to starboard.

---

## **33' Silverton Guest Stateroom**

---

The guest stateroom is located port forward and offers side by side berths with an insert for conversion into a queen size berth, 1 portlight, hanging locker, shelf and carpet. The head is to starboard.

---

## **33' Silverton Helm**

---

The helm is located port forward in the salon and offers a full helm with the electronics as described in the electronics section of this brochure and a 2 person benchseat.

---

## **33' Silverton Cockpit**

---

The cockpit offers a non-skid deck, transom door to the fiberglass swimplatform, raw water and fresh water washdown, a Norcold refrigerator/freezer and Sony exterior speakers.

---

## **33' Silverton Audio/Visual Equipment**

---

- KVH Tracvision M3 satellite TV system
- KVH Tracvision DirecTV satellite TV receiver
- Toshiba flat screen TV in the salon
- Sony CDX-F50M AM/FM/CD/MP3/Sat radio ready player in the salon
- Jensen DVDB01 DVD/CD/MP3 player in the salon



- Sole flat screen TV in the master stateroom
- Sole SDP831 AM/FM/CD player in the master stateroom
- Sony exterior speakers
- Glomex TV antenna gain control

---

### **33' Silverton Electronics**

---

- Raymarine ST6002 SmartPilot autopilot
- Raymarine E80 Multi Function Display
- Raymarine 48nm Radar
- Raymarine ST60+ Tridata system
- Raymarine Ray75 DSC VHF
- Ritchie magnetic compass

---

### **33' Silverton Electrical System**

---

- Kohler 5ECD 5 kW generator with approximately 145 hours
- 2 X Charles 30 amp battery chargers
- Charles 3.6 kva IsoGuard isolation transformer
- 3 X Interstate SRM29 house/start batteries
- 2 X Optima 31 Series thruster batteries
- Guest battery switches
- 2 X Marinco 30 amp shore cords

---

### **33' Silverton Engine/Mechanical Equipment**

---

- Twin Crusader Captain's Choice 6.0MPI main engines with approximately 213 hours each
- ZF Hurth 63A gearboxes
- Ultra-Flex engine controls

- 
- Murphy Powerview engine control panels
  - Agonquin sea strainers
  - Racor fuel filters
  - Tides Marine dripless shaft seals
  - Seastar hydraulic steering system
  - Bennett trim tabs
  - Volvo QL bow thruster and Vetus stern thruster with integrated single control at the helm
  - Oil X-Changer oil change system
  - Attwood 10.5 gallon water heater
  - Marine Air systems reverse cycle air conditioning/heating system (3 units)
  - QL heating system
  - Extreme winter automatic engine room heater
  - Jabsco Quiet-flush head
  - 18" X 23" Nibral propellers
  - Spare propellers
  - Stainless steel shafts
  - Exalto windshield wipers and control panel

## **33' Silverton Deck Equipment**

---

- Maxwell anchor windlass with foot controls with remote at the helm
- 10kg stainless steel plow type anchor
- St. Crix dinghy davit system on the swimplatform
- Stainless steel deck hardware and rails
- Raw and fresh water washdowns fore and aft
- Hot/cold fresh water shower in the transom
- Dual stern Ocean Amphibians A12 Pro Series underwater lights

---

## 33' Silverton Safety & Fire Protection

---

- SeaFire Halon 1301 engine room fire suppression system
- Rule bilge pumps
- Safe-T-Alert carbon monoxide alarms
- Safe-T-Alert SA-10XL fume detector
- First Alert smoke detectors
- ITT Jabsco searchlight

---

## 33' Silverton Exclusions

---

- Sellers' personal belongings

---

## 33' Silverton Disclaimer

---

The Company offers the details of this vessel in good faith but cannot guarantee or warrant the accuracy of this information nor warrant the condition of the vessel. A buyer should instruct his agents, or his surveyors, to investigate such details as the buyer desires validated. This vessel is offered subject to prior sale, price change, or withdrawal without notice.

---

## Exclusions

---

Owner's personal belongings.

---

## Disclaimer

---

The Company offers the details of this vessel or yacht in good faith but cannot guarantee or warrant the accuracy of this information nor warrant the condition of the vessel. A buyer should instruct his representatives, agents, or his surveyors, to investigate such details as the buyer desires validated. This vessel or yacht is offered subject to prior sale, price change, or withdrawal without notice.

# PHOTOS

**33' Silverton Starboard Forward Profile**



**33' Silverton Forward Profile**



**33' Silverton Aft Profile**



**33' Silverton Swimplatform**



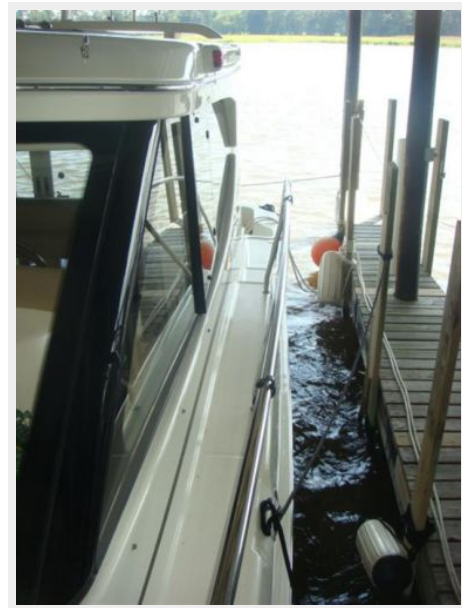
**33' Silverton Anchor Windlass**



**33' Silverton Foredeck**



**33' Silverton Side Deck Photo1**



**33' Silverton Foredeck Aft**



33' Silverton Port Side Deck Photo2



33' Silverton Starboard Side Deck Photo1



33' Silverton Starboard Side Deck Photo2



33' Silverton cockpit



**33' Silverton cockpit Port**



**33' Silverton Cockpit Starboard**



**33' Silverton Lazarrette Access**



**33' Silverton Salon Forward**



**33' Silverton Salon Aft**



**33' Silverton Salon Port**



**33' Silverton Salon Port Seating Photo1**



**33' Silverton Salon Port Seating Photo2**



**33' Silverton Salon Seating Storage**



**33' Silverton Salon Starboard Seating**



**33' Silverton Galley**



**33' Silverton Helm Photo1**





**33' Silverton Helm Photo2**



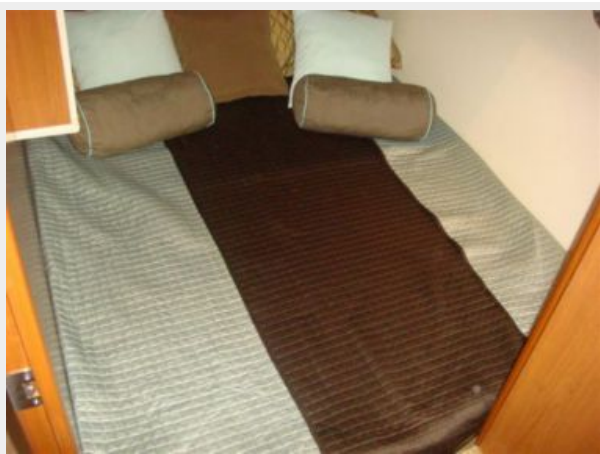
**33' Silverton Master Stateroom**



**33' Silverton Head**



**33' Silverton Guest Stateroom**



### 33' Silverton Engine Compartment



### 33' Silverton Port Main Engine



### 33' Silverton Starboard Main Engine



### 33' Silverton Oil Change System



### 33' Silverton Heating System



### 33' Silverton Water Heater



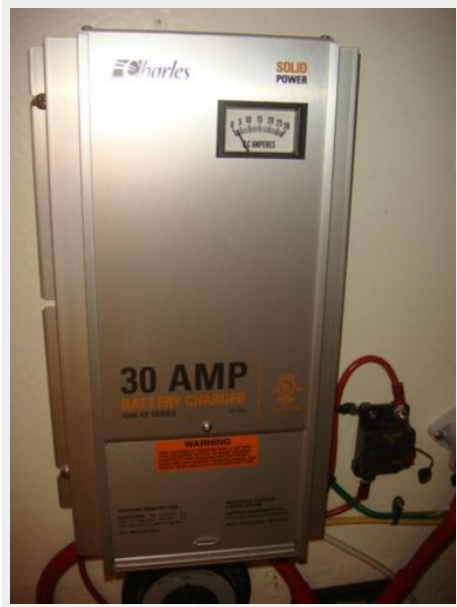
### 33' Silverton Generator Soundbox



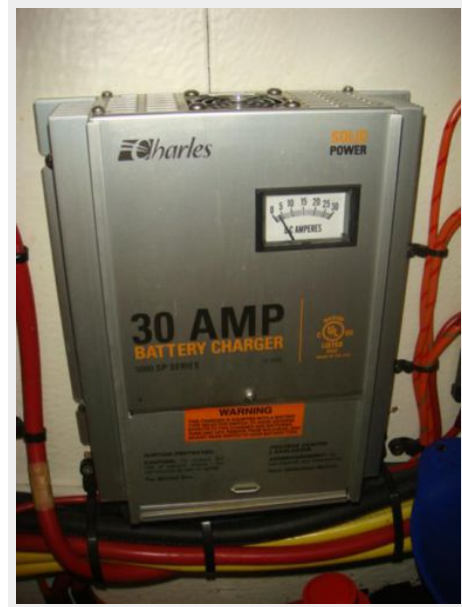
### 33' Silverton Generator



### 33' Silverton Battery Charger1



### 33' Silverton Battery Charger2



### 33' Silverton Layout



# CONTACTS

---

Andrey Shestakov, leading yacht broker of the sales department of Shestakov Yacht Sales Inc. Shestakov Yacht Sales Inc., the official representative of the Miami/Fort Lauderdale FL headquarters.

## Contact details

---

Email: [andrey@shestakovyachtsales.com](mailto:andrey@shestakovyachtsales.com)

Web: [shestakovyachtsales.com/en/](http://shestakovyachtsales.com/en/)

## Telephones

---

USA: +1(954)274-4435

## Office hours

---

Monday – Saturday: **9:00 - 21:00** EDT

Sunday: **closed**

## Address

---



Harbour Towne Marina, 850 NE 3rd St,  
STE 213, Dania, FL 33004