

MISS MOLLY — SILVERTON



Судостроитель: SILVERTON

Год постройки: 2007

Модель: Крейсер

Цена: **ЦЕНА ЯХТЫ ПО ЗАПРОСУ**

Местонахождение: United States

Длина общая: 33' 0" (10.06m)

Ширина: 12' 7" (3.84m)

Мин. осадка: 2' 6" (0.76m)

Макс. осадка: 2' 6" (0.76m)

Крейс. скорость: 20 Kts. (23 MPH)

Макс. скорость: 28 Kts. (32 MPH)

Купить **Miss Molly — SILVERTON** а также выбрать подходящую вам яхту из нашего каталога яхт вам поможет опытный яхтенный брокер Андрей Шестаков. На сегодняшний день компания **Shestakov Yacht Sales Inc.** имеет большое количество яхт в собственном списке продаж, а также тесно сотрудничает со всеми крупными яхтенными производителями по всему миру.

Для того чтобы купить яхту **Miss Molly — SILVERTON** а также проконсультироваться по любому вопросу связанному с покупкой, продажей, чартером яхт позвоните по телефону **+7(918)465-66-44**.

ОГЛАВЛЕНИЕ

ОГЛАВЛЕНИЕ	2
ХАРАКТЕРИСТИКИ	5
Обзор	5
Основная информация	5
Размеры	5
Скорость, вместимость и масса	5
Размещение	5
Корпус и палуба	6
Информация о двигателе	6
ПОДРОБНОЕ ОПИСАНИЕ	7
33' Silverton Overview	7
33' Silverton Vessel Walkthrough	7
33' Silverton Accommodations	7
33' Silverton Salon	7
33' Silverton Galley	7
33' Silverton Dining	8
33' Silverton Master Stateroom	8
33' Silverton Guest Stateroom	8
33' Silverton Helm	8
33' Silverton Cockpit	8
33' Silverton Audio/Visual Equipment	8
33' Silverton Electronics	9
33' Silverton Electrical System	9
33' Silverton Engine/Mechanical Equipment	9
33' Silverton Deck Equipment	10
33' Silverton Safety & Fire Protection	11
33' Silverton Exclusions	11
33' Silverton Disclaimer	11

Исключения	11
Отказ от ответственности	11
ФОТОГРАФИИ	12
33' Silverton Starboard Forward Profile	12
33' Silverton Forward Profile	12
33' Silverton Aft Profile	12
33' Silverton Swimplatform	12
33' Silverton Anchor Windlass	13
33' Silverton Foredeck	13
33' Silverton Side Deck Photo1	13
33' Silverton Foredeck Aft	13
33' Silverton Port Side Deck Photo2	14
33' Silverton Starboard Side Deck Photo1	14
33' Silverton Starboard Side Deck Photo2	14
33' Silverton cockpit	14
33' Silverton cockpit Port	15
33' Silverton Cockpit Starboard	15
33' Silverton Lazarrette Access	15
33' Silverton Salon Forward	15
33' Silverton Salon Aft	15
33' Silverton Salon Port	15
33' Silverton Salon Port Seating Photo1	16
33' Silverton Salon Port Seating Photo2	16
33' Silverton Salon Seating Storage	16
33' Silverton Salon Starboard Seating	16
33' Silverton Galley	16
33' Silverton Helm Photo1	16
33' Silverton Helm Photo2	17
33' Silverton Master Stateroom	17

33' Silverton Head	17
33' Silverton Gust Stateroom	17
33' Silverton Engine Compartment	18
33' Silverton Port Main Engine	18
33' Silverton Starboard Main Engine	18
33' Silverton Oil Change System	18
33' Silverton Heating System	19
33' Silverton Water Heater	19
33' Silverton Generator Soundbox	19
33' Silverton Generator	19
33' Silverton Battery Charger1	20
33' Silverton Battery Charger2	20
33' Silverton Layout	20
КОНТАКТЫ	21
Контактная информация	21
Телефоны	21
Время работы	21
Адрес	21

ХАРАКТЕРИСТИКИ

Обзор

Miss Molly is a 2 stateroom 33' Silverton Sport Coupe with bow and stern thrusters in very good condition. She has low hour engines and generator, plus numerous other upgrades that make her a great buy at a reduced asking price of only \$110,000!

Основная информация

Тип судна: Крейсер

Подкатегория: Sport Cruiser

Модельный год: 2007

Год постройки: 2007

Страна: United States

Размеры

Длина общая: 33' 0" (10.06m)

Длина по ватерлинии: 28' 3" (8.61m)

Ширина: 12' 7" (3.84m)

Мин. осадка: 2' 6" (0.76m)

Макс. осадка: 2' 6" (0.76m)

Трапы: 13' 0" (3.96m)

Скорость, вместимость и масса

Крейс. скорость: 20 Kts. (23 MPH)

Макс. скорость: 28 Kts. (32 MPH)

Водоизмещение: 16300 Pounds

Вместимость воды: 80 Gallons

Вместимость сточного бака: 30 Gallons

Объем топливного бака: 208 Gallons

Размещение

Всего кают: 2

Всего коек: 4

Спальные места: 6

Всего ком. состава: 1

Корпус и палуба

Материал корпуса: Fiberglass

Материал палубы: Composite Fiberglass

Отделка корпуса: Plastic

Информация о двигателе

Двигатели: 2

Производитель: Crusader

Модель: Captain's Choice 6.0MPI

Тип двигателя: Inboard

Тип топлива: Gas/Petrol

ПОДРОБНОЕ ОПИСАНИЕ

33' Silverton Overview

Miss Molly is a 2 stateroom 33' Silverton Sport Coupe with bow and stern thrusters in very good condition. She has low hour engines and generator, plus numerous other upgrades that make her a great buy at a very competitive asking price of only \$129,000!

33' Silverton Vessel Walkthrough

Entering the salon through the double sliding stainless steel & glass doors, you will find a sofa with storage underneath and hi/lo table to port, the lower helm port forward, the galley starboard forward and a sleeper sofa with storage underneath to starboard. Step down into the guest foyer and you will find a guest stateroom to port, the head to starboard and the master stateroom forward. Engine room access is through a hatch in the salon sole. There is a light Cherry wood interior throughout.

33' Silverton Accommodations

Miss Molly offers a master stateroom forward with a queen size berth and a guest stateroom to port with side by side berths that convert into a queen size berth. The head is to starboard. The salon starboard sofa converts into a berth also.

33' Silverton Salon

The open and airy salon offers a sofa with storage underneath and hi/lo table to port and a sleeper sofa with storage underneath to starboard. There are screen doors in addition to the double sliding aft stainless steel & glass doors and a VistaAire retractable sky light with inside screen and exterior cover. Hinged side windows open aft with screens.

33' Silverton Galley

The galley is located starboard forward in the salon.

- Norcold refrigerator/freezer
- Princess Euro kera electric 1-burner ceramic cooktop
- Tappan microwave oven
- Solid surface countertop

- Deep molded sink
- Norcold refrigerator/freezer in the cockpit

33' Silverton Dining

Dining space is available at the salon hi/lo table.

33' Silverton Master Stateroom

The master stateroom is located forward and offers a queen size berth, overhead deck hatch, carpet, hanging locker and storage drawers and cabinet. the head is just aft of the master stateroom to starboard.

33' Silverton Guest Stateroom

The guest stateroom is located port forward and offers side by side berths with an insert for conversion into a queen size berth, 1 portlight, hanging locker, shelf and carpet. The head is to starboard.

33' Silverton Helm

The helm is located port forward in the salon and offers a full helm with the electronics as described in the electronics section of this brochure and a 2 person benchseat.

33' Silverton Cockpit

The cockpit offers a non-skid deck, transom door to the fiberglass swimplatform, raw water and fresh water washdown, a Norcold refrigerator/freezer and Sony exterior speakers.

33' Silverton Audio/Visual Equipment

- KVH Tracvision M3 satellite TV system
- KVH Tracvision DirecTV satellite TV receiver
- Toshiba flat screen TV in the salon
- Sony CDX-F50M AM/FM/CD/MP3/Sat radio ready player in the salon
- Jensen DVDB01 DVD/CD/MP3 player in the salon

- Sole flat screen TV in the master stateroom
- Sole SDP831 AM/FM/CD player in the master stateroom
- Sony exterior speakers
- Glomex TV antenna gain control

33' Silverton Electronics

- Raymarine ST6002 SmartPilot autopilot
- Raymarine E80 Multi Function Display
- Raymarine 48nm Radar
- Raymarine ST60+ Tridata system
- Raymarine Ray75 DSC VHF
- Ritchie magnetic compass

33' Silverton Electrical System

- Kohler 5ECD 5 kW generator with approximately 145 hours
- 2 X Charles 30 amp battery chargers
- Charles 3.6 kva IsoGuard isolation transformer
- 3 X Interstate SRM29 house/start batteries
- 2 X Optima 31 Series thruster batteries
- Guest battery switches
- 2 X Marinco 30 amp shore cords

33' Silverton Engine/Mechanical Equipment

- Twin Crusader Captain's Choice 6.0MPI main engines with approximately 213 hours each
- ZF Hurth 63A gearboxes
- Ultra-Flex engine controls

- Murphy Powerview engine control panels
- Agonquin sea strainers
- Racor fuel filters
- Tides Marine dripless shaft seals
- Seastar hydraulic steering system
- Bennett trim tabs
- Volvo QL bow thruster and Vetus stern thruster with integrated single control at the helm
- Oil X-Changer oil change system
- Attwood 10.5 gallon water heater
- Marine Air systems reverse cycle air conditioning/heating system (3 units)
- QL heating system
- Extreme winter automatic engine room heater
- Jabsco Quiet-flush head
- 18" X 23" Nibral propellers
- Spare propellers
- Stainless steel shafts
- Exalto windshield wipers and control panel

33' Silverton Deck Equipment

- Maxwell anchor windlass with foot controls with remote at the helm
- 10kg stainless steel plow type anchor
- St. Crix dinghy davit system on the swimplatform
- Stainless steel deck hardware and rails
- Raw and fresh water washdowns fore and aft
- Hot/cold fresh water shower in the transom
- Dual stern Ocean Amphibians A12 Pro Series underwater lights

33' Silverton Safety & Fire Protection

- SeaFire Halon 1301 engine room fire suppression system
- Rule bilge pumps
- Safe-T-Alert carbon monoxide alarms
- Safe-T-Alert SA-10XL fume detector
- First Alert smoke detectors
- ITT Jabsco searchlight

33' Silverton Exclusions

- Sellers' personal belongings

33' Silverton Disclaimer

The Company offers the details of this vessel in good faith but cannot guarantee or warrant the accuracy of this information nor warrant the condition of the vessel. A buyer should instruct his agents, or his surveyors, to investigate such details as the buyer desires validated. This vessel is offered subject to prior sale, price change, or withdrawal without notice.

Исключения

При продаже яхты исключаются личные вещи владельца.

Отказ от ответственности

Компания предоставляет описание судна или яхты добросовестно, но не может гарантировать точность этой информации, а также не ручается за техническое состояние. Покупатель должен проинструктировать своих агентов или оценщиков исследовать представленную информацию более подробно, по собственному желанию. Продажа судна или яхты, изменение цены или снятие с продажи будет происходить без предварительного уведомления.

ФОТОГРАФИИ

33' Silverton Starboard Forward Profile



33' Silverton Forward Profile



33' Silverton Aft Profile



33' Silverton Swimplatform



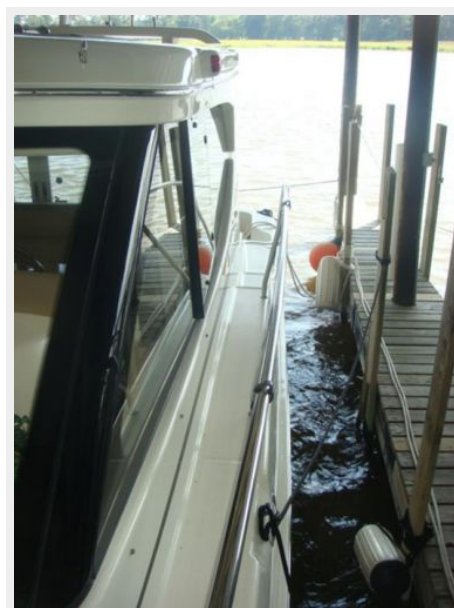
33' Silverton Anchor Windlass



33' Silverton Foredeck



33' Silverton Side Deck Photo1



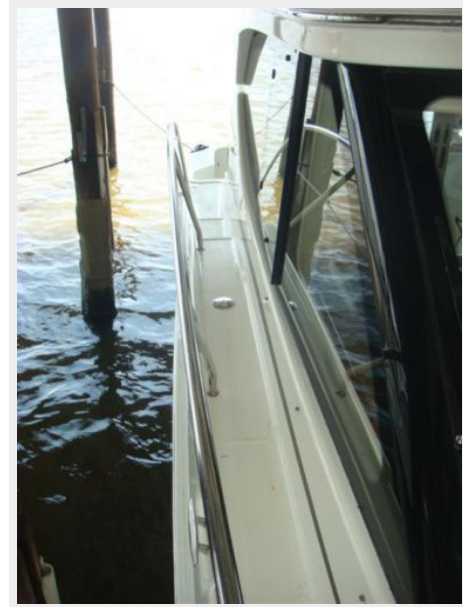
33' Silverton Foredeck Aft



33' Silverton Port Side Deck Photo2



33' Silverton Starboard Side Deck Photo1



33' Silverton Starboard Side Deck Photo2



33' Silverton cockpit



33' Silverton cockpit Port



33' Silverton Cockpit Starboard



33' Silverton Lazarrette Access



33' Silverton Salon Forward



33' Silverton Salon Aft



33' Silverton Salon Port



33' Silverton Salon Port Seating Photo1



33' Silverton Salon Port Seating Photo2



33' Silverton Salon Seating Storage



33' Silverton Salon Starboard Seating



33' Silverton Galley



33' Silverton Helm Photo1



33' Silverton Helm Photo2



33' Silverton Master Stateroom



33' Silverton Guest Stateroom



33' Silverton Head



33' Silverton Engine Compartment



33' Silverton Port Main Engine



33' Silverton Starboard Main Engine



33' Silverton Oil Change System



33' Silverton Heating System



33' Silverton Water Heater



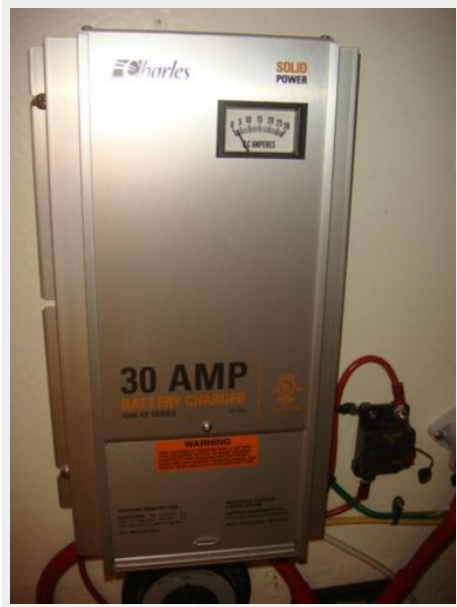
33' Silverton Generator Soundbox



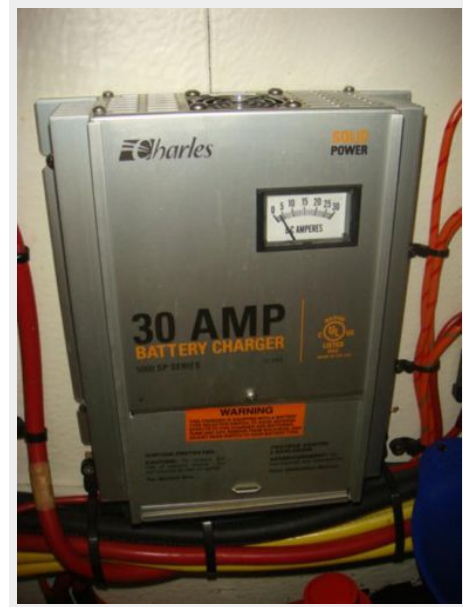
33' Silverton Generator



33' Silverton Battery Charger1



33' Silverton Battery Charger2



33' Silverton Layout



КОНТАКТЫ

Андрей Шестаков (Andrey Shestakov) – ведущий яхтенный брокер отдела продаж яхт и судов компании Shestakov Yacht Sales Inc. Официальный представитель Shestakov Yacht Sales Inc. для русскоговорящих клиентов в центральном офисе компании в Майами/Форт Лодердейл/Флорида/США.

Контактная информация

Email: andrey@shestakovyachtsales.com

Web: shestakovyachtsales.com

Телефоны

Краснодарский край: **+7(918)465-66-44**

США, Майами, Флорида: **+1(954)274-4435**

Время работы

Понедельник – Суббота: **9:00 - 21:00**
EDT

Воскресенье: **Закрето**

Адрес



Harbour Towne Marina, 850 NE 3rd St,
STE 213, Dania, FL 33004