

MY WORLD — SEA RAY



Судостроитель: SEA RAY

Год постройки: 2009

Модель: Крейсер

Цена: **ЦЕНА ЯХТЫ ПО ЗАПРОСУ**

Местонахождение: United States

Длина общая: 61' 0" (18.59m)

Ширина: 16' 9" (5.11m)

Макс. осадка: 4' 9" (1.45m)

Крейс. скорость: 27 Kts. (31 MPH)

Макс. скорость: 32 Kts. (37 MPH)

Купить **MY World — SEA RAY** а также выбрать подходящую вам яхту из нашего каталога яхт вам поможет опытный яхтенный брокер Андрей Шестаков. На сегодняшний день компания **Shestakov Yacht Sales Inc.** имеет большое количество яхт в собственном списке продаж, а также тесно сотрудничает со всеми крупными яхтенными производителями по всему миру.

Для того чтобы купить яхту **MY World — SEA RAY** а также проконсультироваться по любому вопросу связанному с покупкой, продажей, чартером яхт позвоните по телефону **+7(918)465-66-44**.

ОГЛАВЛЕНИЕ

ОГЛАВЛЕНИЕ	2
ХАРАКТЕРИСТИКИ	4
Обзор	4
Основная информация	4
Размеры	4
Скорость, вместимость и масса	4
Размещение	4
Корпус и палуба	4
Информация о двигателе	5
ПОДРОБНОЕ ОПИСАНИЕ	6
Layout	6
Electrical Equipment	6
Equipment	6
Exterior	6
Salon	7
Master Stateroom and Head	7
Guest Stateroom 1	7
Guest Stateroom 2	7
Galley	8
Accessories	8
Broker Remarks	8
Исключения	8
Отказ от ответственности	8
ФОТОГРАФИИ	9
КОНТАКТЫ	13
Контактная информация	13
Телефоны	13
Время работы	13

Адрес

13

ХАРАКТЕРИСТИКИ

Обзор

"My World" is just what you'd expect in a 2010 Sea Ray 610 Sundancer. Outfitted with all the right equipment and only 300 hours on her 1050 hp MAN engines. Well maintained and lightly used. This boat is taken care of by a good captain with an owner who spares no expense in keeping a boat. Easy to show in Palm Beach.

Основная информация

Тип судна: Крейсер

Модельный год: 2010

Год постройки: 2009

Страна: United States

Размеры

Длина общая: 61' 0" (18.59m)

Ширина: 16' 9" (5.11m)

Макс. осадка: 4' 9" (1.45m)

Длина привального бруса: 61' 0"
(18.59m)

Скорость, вместимость и масса

Крейс. скорость: 27 Kts. (31 MPH)

Макс. скорость: 32 Kts. (37 MPH)

Размещение

Всего кают: 3

Всего ком. состава: 2

Корпус и палуба

Материал корпуса: Fiberglass

Информация о двигателе

Производитель: MAN

Модель: 1050

Тип двигателя: Inboard

Тип топлива: Diesel

ПОДРОБНОЕ ОПИСАНИЕ

Layout

Elegant, classy, modern the 610 is one of the Sea Ray's best performing boats. Starting aft is an oversized hydraulic swim platform with stairs leading up to a great aft deck with bar sink refrigerator. This leads into the upper salon. The doors slide and lock in a wide-open position to allow the salon in the aft deck to create one main social deck. The upper salon features two sofas and the lower helm on the starboard side. Going down the stairs with handrail leads to the main salon with wood floors, large curved ultra-leather sofa and galley on the starboard side. The cherry wood work is beautiful. There are two refrigerator freezer (drawer style) compartments. Forward to port is the guest head leading through high gloss cherry wood doors to the forward VIP guest stateroom and a third upper and lower bunk state room to starboard. The rooms are equipped with TV's and entertainment systems. Going aft from the salon you pass the locker with the washer/dryer and enter the very large full beam mid-ship owner stateroom with King bed, vanity areas, to hanging lockers and drawers. The owners head and shower is en-suite and comfortable. Forward on the bow is a large sun cushion area.

Electrical Equipment

Raymarine Package Autopilot, Raymarine Raypilot ST 8002 Depth Display, Raymarine ST-60 Electronics Circuit, 12V/50 Amp Hailer Horn, Raymarine 220 (2) Raymarine: E140 12.1" Color LCD Radar/GPS/E140W Chartplotter w/Integrated 4 kW HD Open Array Scanner - Primary Display E140W VHF Radio, Raymarine 240 Air Conditioning/Heating Cabin: Cruisair 5 compressor Zone-Controlled reverse-cycle split system, 240V Air Conditioning Heating Sun Room: Reverse cycle split system, 240V Electrical Systems: Battery Equalizer, 65 Amp (2) Battery Solenoid Switches, 12V (2) 24V (3) Cable Television System C-Phone system Panel, Main Distribution - AC Panel, Main Distribution - DC Shore Power, Cablemaster Shore Power, Secondary Cablemaster Transformer, Shore Power Isolation Wiring, Color-Coded

Equipment

Fuel System: Crossover Fuel System Fuel Filters - 2 engine and 1 gen Fuel Tanks, Aluminum Water System: Fresh water wash down spigots Pressure water system Shower, for aft deck, cockpit & swim platform Water heater (20 Gallon): 240V Water inlet, dockside Water manifold systems Waste System: Central drain system Head system, VacuFlush Holding tank (70-Gallons) Holding tank level indicators Macerator Sump box Windlass System: Anchor chain storage all chain Anchor chute: stainless steel Anchor wash down spigot Anchor: Stainless steel Windlass, chain

Exterior

Hull and Deck: Bottom paint Bow rail (8) Custom Sea Ray cleats Deck fill plates Deck rails Gelcoat, Arctic White Handrails, 316 stainless steel Deck vent hatch Over-sized hull windows Navigation lights Hull high performance vinylester resin PVC rub rail (2) Electric skylights, flush mount Transom opening storage Hull stringer system, fiberglass grid system for strength Sun pad, forward deck Hydraulic Marine Lift swim platform Hull thru-hull fittings Hull vent system, engine room Windshield washer system Windshield wipers, 24V Windshield, tempered/tinted curved glass Cockpit Features: Beverage holders Transom aft deck doors to swim platform Grill 120V Icemaker Deck lighting 120V GFI protected outlet 120V Refrigerator Aft bench seating (4) Bose exterior speakers Swim ladder Molded deck access steps Side panels storage Wet bar

Salon

End table Entertainment center Ottoman, movable Seating, curved sofa Steps, entryway with hand rail Storage, gunwale cabinets Washer & Dryer in hallway Helm Control Station: 24V Bow and stern thrusters with control at helm & remote Compass Emergency start system 24V Air horn Instrument panels Instrumentation Shift and throttle controls ACR spot light Digital LCD system monitor Cabin Features: Wood blinds Carbon monoxide monitors Carpet - bedroom only High - gloss solid wood doors in salon End tables - built-in Handrail in salon 120V Indirect lighting 1250V Xenon lighting 24V Indirect lighting 24V Xenon lighting Outlet & Switch plates 12V Accesory outlets Phone outlets In-floor storage Central vacuum system Wood interior finish: dark cherry (gloss)

Master Stateroom and Head

Queen over-size bed Dressers Entertainment center (2) Hanging lockers, cedar lined Sony TV with DVD Night Stands (2) Bose stereo surround sound Storage cabinet, forward wall Storage, shelves Master Head: Bath accessories Door, privacy Flooring, tile Handrails Head, elongated Power vent, 24V Robe Hook, head door Shower Storage cabinets, upper & Lower

Guest Stateroom 1

Beds, Upper & Lower Bunks Hanging Locker, Cedar-Lined TV, 15" Flat screen LCD Sony with DVD Guest Head: Door, privacy Flooring, tile Handrails Head, elongated Power vent, 24V Robe hook on head door Shower Storage, medicine cabinet Vanity

Guest Stateroom 2

Forward Stateroom: Queen size bed Entertainment center Sony TV Twin DVD Bose stereo Hanging lockers, cedar lined Shades, Roman Storage, side shelves

Galley

Corian counter top, solid surface Vitrefrigo 120V under-counter freezer Quisinart Microwave/convection oven 24V Power vent (2) Under-counter freezers (2) Under-counter refrigerators Storage cabinets Storage drawers Storage glass rack cabinet 240V 3-Burner stove

Accessories

Underwater Gear: Bonding system Propeller shafts, 2 1/2" Propellers, Nibral 4-blade cup Rudders, manganese-bronze Seacocks Seawater strainers Shaft logs, driplless Struts, manganese-bronze Trim tabs, hydraulic Upper Sun Room Features: Beverage holders Solar window tint aft door curtain Door, cabin entry Sliding doors, sun room entry Entretaniment center Flooring, teak Handrails, 316 stainless steel Hardtop, fiberglass Lighting, 24V indirect Outlet, 120V GFI protected Outlet, 12V accessory Outlet, cable TV Seating, loveseat Seating, sofa Seating, Stidd Double Companion Seating, Stidd Highback Slimline Helm Ship's Bell Storage cabinet Storage, glove box Table, dining/cocktail

Broker Remarks

"My World" is just what you'd expect in a 2010 Sea Ray 610 Sundancer. Outfitted with all the right equipment and only 300 hours on her 1050hp MAN engines. Well maintained and lightly used. This boat is taken care of by a good captain with an owner who spares no expense in keeping a boat. Easy to show in Palm Beach.

Исключения

При продаже яхты исключаются личные вещи владельца.

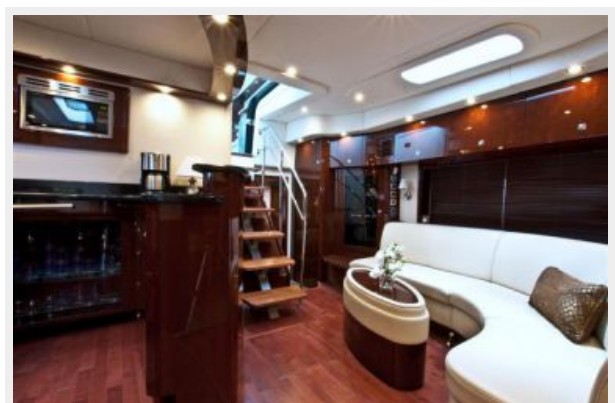
Отказ от ответственности

Компания предоставляет описание судна или яхты добросовестно, но не может гарантировать точность этой информации, а также не ручается за техническое состояние. Покупатель должен проинструктировать своих агентов или оценщиков исследовать представленную информацию более подробно, по собственному желанию. Продажа судна или яхты, изменение цены или снятие с продажи будет происходить без предварительного уведомления.

ФОТОГРАФИИ









КОНТАКТЫ

Андрей Шестаков (Andrey Shestakov) – ведущий яхтенный брокер отдела продаж яхт и судов компании Shestakov Yacht Sales Inc. Официальный представитель Shestakov Yacht Sales Inc. для русскоговорящих клиентов в центральном офисе компании в Майами/Форт Лодердейл/Флорида/США.

Контактная информация

Email: andrey@shestakovyachtsales.com

Web: shestakovyachtsales.com

Телефоны

Краснодарский край: **+7(918)465-66-44**

США, Майами, Флорида: **+1(954)274-4435**

Время работы

Понедельник – Суббота: **9:00 - 21:00**
EDT

Воскресенье: **Закрито**

Адрес



Harbour Towne Marina, 850 NE 3rd St,
STE 213, Dania, FL 33004