

CAROLEE — CARVER



Builder: CARVER

Year Built: 2000

Model: Cruiser

Price: PRICE ON APPLICATION

Location: United States

LOA: 39' 0" (11.89m)

Beam: 13' 11" (4.24m)

Min Draft: 3' 6" (1.07m)

Max Draft: 3' 6" (1.07m)

Our experienced yacht broker, Andrey Shestakov, will help you choose and buy a yacht that best suits your needs **CAROLEE — CARVER** from our catalogue. Presently, at Shestakov Yacht Sales Inc., we have a wide variety of yachts available on our sale's list. We also work in close contact with all the big yacht manufacturers from all over the world.

If you would like to buy a yacht **CAROLEE — CARVER** or would like help answering any questions concerning purchasing, selling or chartering a yacht, please call **+1(954)274-4435**

TABLE OF CONTENTS

TABLE OF CONTENTS	2
SPECIFICATIONS	5
Overview	5
Basic Information	5
Dimensions	5
Speed, Capacities and Weight	5
Accommodations	6
Hull and Deck Information	6
Engine Information	6
DETAILED INFORMATION	7
Vessel Walkthrough & Accommodations	7
Salon	7
Galley	8
Aft Master Stateroom	8
Ensuite Master Head & Shower	9
Forward Guest Stateroom	9
Guest/Day Head with Shower	9
Engine & Mechanical	10
Electronics & Navigation Equipment	10
Electrical System	11
Deck & Hull Equipment	11
Broker's Comments	12
Exclusions	12
Disclaimer	12
PHOTOS	13
Salon forward	13
Galley to port	13
Master Stateroom aft	13

Sundeck Aft	13
Flybridge Helm	13
Forward Guest Stateroom	13
Salon to starboard	14
Salon forward	14
Salon to aft port	14
Salon aft	14
Salon Entertainment Center	14
Guest Shower	14
Guest Head	15
Master Island Berth	15
MSR to starboard; Closet doors & Head/Shower entrance door	15
MSR Ensuite Head & Shower	15
Flybridge Seating	16
Forward Deck	16
Deck Profile aft	16
Ground Tackle	16
Molded Stairs to FB & starboard Side Deck	17
Sundeck forward	17
Starboard Engine	17
Port Engine	17
Port Engine, detail	17
Genset Enclosure	17
Port Engine	18
Oil Change System	18
Genset hours - 3500	18
Hydraulic Dinghy Lift Motor	18
Racor Filters	18
Port Dripleless Stuffing Box	18

Starboard Dripless Stuffing Box	19
Raymarine Navigation	19
Ritchie Compass	19
Raymarine RP650 Autopilot	19
Raymarine ST60 Autohelm Series	19
Garmin 340C Fishfinder	19
Raymarine RL70C	20
Flybridge Instruments	20
Forward Deck	20
Flybridge Forward	20
Flybridge Helm	20
Flybridge Seating	20
Flybridge Aft	21
Flybridge forward	21
Sundeck to starboard	21
Sundeck to port	21
Sundeck forward	21
Sundeck aft	21
Aft Starboard Profile	22
Stern Profile	22
Hydraulic Dinghy Lift	22
Aft Port Profile	22
CONTACTS	23
Contact details	23
Telephones	23
Office hours	23
Address	23

SPECIFICATIONS

Overview

The Carver 396 Motor Yacht is a well thought out design that maximizes all interior and exterior space. The inside of this yacht is a stunning display of interior volume unmatched in a boat this size. The salon-easily the most impressive aspect of the boat is immense with a panoramic outside view and about seven feet of headroom. The two-stateroom, galley-down floorplan is arranged with double berths and separate stall showers fore and aft. Top side, wing doors and a hardtop protect CAROLEE is powered by twin **DIESEL** TAMD 63P Volvos. 370hp each. Options are as follows: Kohler 10.0 KW diesel generator, wetbar with icemaker, central vacuum system, Salon flatscreen TV and DVD, full electronics, freshwater washdown, full canvas with exterior carpet in flybridge, transom storage, exterior stereo-bridge, hydraulic dinghy transom lift, engine oil change system, fender racks, transom walkway, pantry – the list goes on and on. Call for your special showing of CAROLEE to see and appreciate all these amenities.

Basic Information

Category: Cruiser	Model Year: 2000
Year Built: 2000	Country: United States
Vessel Top: Radar Arch and Bimini	Fly Bridge: Yes

Dimensions

LOA: 39' 0" (11.89m)	Beam: 13' 11" (4.24m)
Min Draft: 3' 6" (1.07m)	Max Draft: 3' 6" (1.07m)
Clearance: 18' 0" (5.49m)	

Speed, Capacities and Weight

Displacement: 29500 Pounds	Water Capacity: 90 Gallons
Holding Tank: 72 Gallons	Fuel Capacity: 330 Gallons

Accommodations

Total Cabins: 2

Total Berths: 2

Total Heads: 2

Hull and Deck Information

Hull Material: Fiberglass

Hull Configuration: Monohull

Engine Information

Engines: 2

Manufacturer: Volvo

Model: TAMD 63P

Engine Type: Inboard

Fuel Type: Diesel

DETAILED INFORMATION

Vessel Walkthrough & Accommodations

Large, fully enclosed aft deck with hardtop, wing doors - Flybridge - with seating for eight and built in wet bar. Molded in steps to large swim platform with swim ladder and built-in storage locker. Beautiful designer, cherry wood and Ultraleather interior with excellent and abundant built in storage cabinets and cedar lined hanging closets. Very large salon with two large Ultraleather sofas - one L shaped with recliners and one on opposite side of salon with built in storage underneath. Formal dinette up with Ultraleather that easily seats six. Built in custom entertainment center with large Panasonic TV - Flex Vision DVD player - SIX Bose speakers in salon only (Two Bose speakers on aft deck and two Bose speakers on flybridge, more in master cabin. Clarion stereo and CD player. (Clarion stereo CD player with built-in Sirius satellite radio.) One step down to open and excellent gourmet Galley - Built in Norcold side by side refrigerator / freezer, Built in coffee maker, Built in sharp microwave / convection oven, Corian counter tops, cherrywood cabinets. Forward is large guest cabin with large, centerline queen bed, excellent storage cabinets and cedar lined hanging closets. Large guest head with vanity, Corian counter top, Vacuflush toilet, separate glass enclosed shower. Aft of the Salon is a beautiful Master Cabin with oversized, walk-around queen bed, excellent storage cabinets and cedar lined hanging closets, built in bedside cabinets, Master Ensuite Head with vanity with Corian top, Vacuflush toilet, separate, glass enclosed shower. Three reverse cycle MarineAir air conditioning and heating systems.

Salon

- (3) Cherry Wood Cabinets
- L-Shaped Leatherette Couch
- Leatherette Convertible Love Seat
- Entertainment Center
- Carpeting
- Pleated Curtains
- Overhead Recessed Lighting
- Leatherette Headliner
- Fireboy Carbon Monoxide Detector
- Digital Air Conditioning Control
- Panasonic Color Television
- Flexvision DVD Player
- Stereo
- CD Player Cherry Wood Interior
- Designer Pillows

Galley

- (5) Cabinets
- Black & Decker Spacemaker Coffee Maker
- Counter Top - Corian
- Booth Style Dinette
- (3) Drawers
- Nova-Kool Freezer
- 110 Volt AC Outlet
- Cherry Wood Cabinets
- Oak Galley Floor
- Instant Hot Water
- Sharp Carousel Microwave
- Sink – Double Stainless Steel
- Princess Ceran 3-Burner Stove
- Nova-Kool Refrigerator
- Under Cabinet Lighting

Aft Master Stateroom

- Athwartship Queen Berth
- Carpet
- Mirrors
- Panasonic Television
- (3) Oval Ports
- Stereo Volume Control
- (2) 110 Volt AC Outlets
- Table Lamp
- Designer Pillows
- Quilted Bedspread
- Inner Spring Mattress
- (2) Night Tables
- Fireboy Carbon Monoxide Detector
- Flexvision DVD Player
- Clarion Stereo
- Digital Air Conditioning Control
- (5) Drawers
- (2) Cedar Lined Hanging Lockers
- (8) Cherry Wood Cabinets
- Transom Window / Escape Hatch
- Recessed Overhead Lighting
- Leatherette Headliner
- Leatherette Wall Panels

- Reading Lights

Ensuite Master Head & Shower

- Head - Vacu-Flush
- Stall Shower
- (2) Mirrored Medicine Cabinets
- Corian Vanity Top
- Fiberglass Molded Shower
- Fiberglass Molded Shower Seat
- Curved Clear Plexiglass Shower Door
- Single Lever Faucet

Forward Guest Stateroom

- Queen--Full Width Berth
- Sliding Entrance Pocket Door
- Carpet
- Mirrors
- Reading Lights
- Fireboy Carbon Monoxide Detector
- Oval Port Hole
- Round Overhead Opening Hatch With Screen
- Panasonic Television
- Flexvision DVD Player
- Digital Air Conditioning Controls
- (2) Drawers
- Hanging Locker
- (2) Cabinets
- Quilted Bedspread
- Cherry Wood Cabinets

Guest/Day Head with Shower

- Head--Vacu-Flush
- Stall Shower
- (2) Mirrored Medicine Cabinets
- Corian Vanity Top
- Shower Skylight
- Fiberglass Molded Shower
- Fiberglass Molded Shower Seat

- Clear Plexiglass Shower Door
- Single Lever Faucet

Engine & Mechanical

- Air Conditioning
- Battery Charger
- Battery On / Off Switches
- Battery Parallel Switch
- Bilge Blower
- Bilge Pumps
- Bow Thruster
- Engine Room Lights
- Engine Synchronizer
- Fireboy Fire Suppression System
- Fuel Cross Over Valves
- Fuel Shut Off Valves
- Fuel Filters
- Fresh Water Cooled Engines
- Fresh Water Tank Level Gauge
- High Water Bilge Alarm
- High Engine Temperature Alarm
- Hot Water Heater
- Low Oil Pressure Alarm
- Hydraulic Steering Hydraulic Controls
- Oil Transfer System
- Jabsco Remote Spotlight
- Trim Tabs
- Fresh Water Tank Gauge

Electronics & Navigation Equipment

- Richie Compass
- Raymarine ST60 Depth Finder
- Raymarine RL70C Radar (radar not working "scanner not responding" message)
- Remote Helm Control For CD Player In Salon
- Raymarine RC30 color GPS
- Ray Pilot RP650 auto pilot
- Garmin 340C color FF
- VHF Radio

Electrical System

- 12 Volt DC Ships Power
- 60 Amp C-Charger Battery Charger
- 10 Amp C-Charger Battery Charger
- 110 Volt AC Ships Generator – Kohler 10.0 kW 3500 hours
- 110 / 220 Volt AC Dockside Power
- 50 Amp

Deck & Hull Equipment

- Bow Pulpit
- Bow Rails
- Cockpit Carpeting
- Cockpit Lighting
- Cockpit Table
- (2) Deck Chairs
- Dockside Cable TV Connection
- Dockside Fresh Water Connection
- Dockside Telephone Connection
- Full Enclosure
- Fender Racks
- Fiberglass Molded Steps From Platform To Aft Deck
- Aft Deck Fiberglass Hard Top
- Hard Top Recessed Lighting
- Hard Top Stereo Speakers
- Aft Deck Courtesy Lights
- Aft Enclosure W/ 2 Zippered Horseshoes & Screens
- Flybridge Courtesy Lights
- Transom Grab Rail
- Grab Rails
- Horn
- Flybridge Icemaker
- Flybridge Sink
- Navigation Lights
- Propellers - 3 Blade
- Radar Arch
- Swim Ladder
- Swim Platform
- Transom Door
- Transom Shower
- Fiberglass Sole
- Maxwell Windlass

- Windshield Sunscreen
- (2) Aft Deck Clear Plexiglass Wing Doors
- Molded Fiberglass Flybridge Steps w/ SS Handrail
- Hydraulic Dinghy Transom Lift

Broker's Comments

Please note that all staging and decorations are owned by Bill Watson, Listing Broker with Bartram & Brakenhoff and do not convey with vessel.

Exclusions

Owner's personal belongings.

Disclaimer

The Company offers the details of this vessel or yacht in good faith but cannot guarantee or warrant the accuracy of this information nor warrant the condition of the vessel. A buyer should instruct his representatives, agents, or his surveyors, to investigate such details as the buyer desires validated. This vessel or yacht is offered subject to prior sale, price change, or withdrawal without notice.

PHOTOS

Salon forward



Galley to port



Master Stateroom aft



Sundeck Aft



Flybridge Helm



Forward Guest Stateroom



Salon forward



Salon to starboard



Salon to aft port



Salon aft



Salon Entertainment Center



Guest Shower



Guest Head



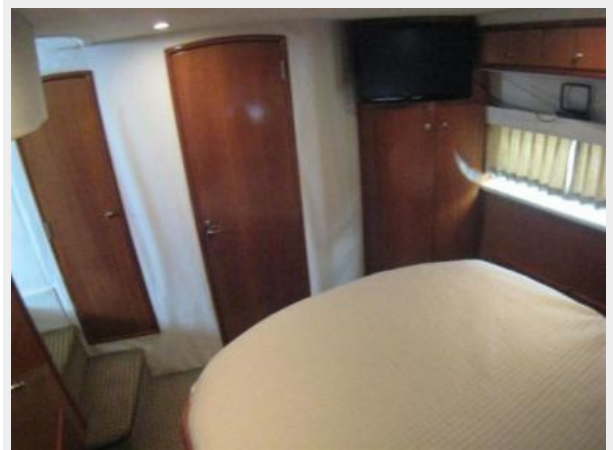
Master Island Berth



MSR Ensuite Head & Shower



MSR to starboard; Closet doors & Head/Shower entrance door



Flybridge Seating



Forward Deck



Deck Profile aft



Ground Tackle

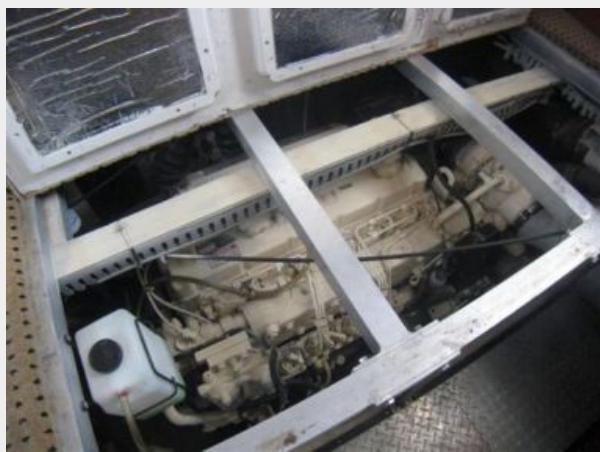


Molded Stairs to FB & starboard Side Deck

Sundeck forward



Starboard Engine



Port Engine



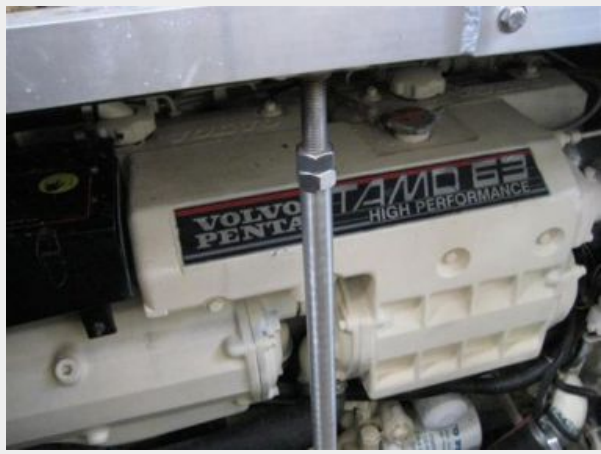
Port Engine, detail



Genset Enclosure



Port Engine



Oil Change System



Genset hours - 3500



Hydraulic Dinghy Lift Motor



Racor Filters



Port Dripless Stuffing Box



Starboard Dripless Stuffing Box



Raymarine Navigation



Ritchie Compass



Raymarine RP650 Autopilot



Raymarine ST60 Autohelm Series



Garmin 340C Fishfinder



Raymarine RL70C



Flybridge Instruments



Forward Deck



Flybridge Forward



Flybridge Helm



Flybridge Seating



Flybridge Aft



Flybridge forward



Sundeck to starboard



Sundeck to port



Sundeck forward



Sundeck aft



Aft Starboard Profile



Stern Profile



Hydraulic Dinghy Lift



Aft Port Profile



CONTACTS

Andrey Shestakov, leading yacht broker of the sales department of Shestakov Yacht Sales Inc. Shestakov Yacht Sales Inc., the official representative of the Miami/Fort Lauderdale FL headquarters.

Contact details

Email: andrey@shestakovyachtsales.com

Web: shestakovyachtsales.com/en/

Telephones

USA: +1(954)274-4435

Office hours

Monday – Saturday: **9:00 - 21:00** EDT

Sunday: **closed**

Address



Harbour Towne Marina, 850 NE 3rd St,
STE 213, Dania, FL 33004