

34FT 2012 FORMULA PC — FORMULA



Builder: FORMULA

Year Built: 2012

Model: Cruiser

Price: PRICE ON APPLICATION

Location: United States

LOA: 34' 0" (10.36m)

Beam: 11' 6" (3.51m)

Max Draft: 3' 0" (0.91m)

Our experienced yacht broker, Andrey Shestakov, will help you choose and buy a yacht that best suits your needs 34ft 2012 Formula PC — FORMULA from our catalogue. Presently, at Shestakov Yacht Sales Inc., we have a wide variety of yachts available on our sale's list. We also work in close contact with all the big yacht manufacturers from all over the world.

If you would like to buy a yacht 34ft 2012 Formula PC — FORMULA or would like help answering any questions concerning purchasing, selling or chartering a yacht, please call +1(954)274-4435

TABLE OF CONTENTS

TABLE OF CONTENTS	2
SPECIFICATIONS	5
Basic Information	5
Dimensions	5
Speed, Capacities and Weight	5
Hull and Deck Information	5
Engine Information	5
DETAILED INFORMATION	6
Exterior	6
Cockpit	7
Cabin	7
Engine	8
BROKERS REMARKS	9
Exclusions	9
Disclaimer	9
PHOTOS	10
34' Formula PC 2012	10
34' Formula PC 2012	10
Bow	10
Bow	10
Radar arch	10
Radar arch	10
Helm Station	11
Helm Station	11
Helm Station	11
Hours	11
Axius skyhook	11
Axius	11

Electronic shift & throttle controls	12
VHF	12
Cabin entry	12
Forward stateroom	12
Cabin	12
Cabin seating	12
Cabin seating	13
Aft cabin lounge	13
Aft cabin lounge	13
Head compartment	13
Galley	13
Galley	13
Two burner electric stove	14
Helm seating	14
Wet bar	14
Wet bar	14
Cockpit seating	14
Cockpit seating	14
Cockpit seating	15
Bimini top	15
Engines	15
Engines	15
Generator	15
Generator	15
Engine compartment	16
Engine compartment	16
Swim platform	16
Transom storage	16
34' Formula PC 2012	16

Profile	16
34' Formula PC 2012	17
34' Formula PC 2012	17
Outdrives	17
34' Formula PC 2012	17
CONTACTS	18
Contact details	18
Telephones	18
Office hours	18
Address	18

SPECIFICATIONS

Basic Information

Category: Cruiser

Sub Category: Express

Model Year: 2012

Year Built: 2012

Country: United States

Dimensions

LOA: 34' 0" (10.36m)

Beam: 11' 6" (3.51m)

Max Draft: 3' 0" (0.91m)

Clearance: 11' 6" (3.51m)

MFG Length: 35' 7" (10.85m)

Speed, Capacities and Weight

Water Capacity: 57 Gallons

Holding Tank: 40 Gallons

Fuel Capacity: 206 Gallons

Hull and Deck Information

Hull Material: Fiberglass

Engine Information

Engines: 2

Manufacturer: Mercruiser

Model: 8.2 Mag SeaCore

Engine Type: Inboard

Fuel Type: Gas/Petrol

DETAILED INFORMATION

Exterior

- NMMA Yacht/CE Certification
- Transferable 5-Year Formula Guard® Limited Protection Plan w/10-year Structural Warranty (USA only)
- Ashland Maxguard LE gelcoat in White or Soft White
- Imron® standard graphic & cockpit accent striping
- Pressure-treated Perma Panel™ structural hull matrix
- Foam-filled hull cavities
- Chemically bonded & thru-bolted deck-to-hull joint
- Heavy-duty PVC gunwale w/stainless insert
- Integrated bow platform
- Electric windlass w/chain counter, 200' chain, polished stainless anchor, remote control & freshwater anchor wash down system
- Concealed anchor davit w/fiberglass chain locker
- Polished remote-control searchlight
- Stainless hardware & 316L welded rails
- Stainless custom Formula logo-cast cleats (10), fuel fills, forward polished Bomar® cabin venting hatches w/screens (2), forward Bomar cabin venting hatches w/integrated OceanAir® rollout SKYscreen & privacy shade (3) & polished port lights w/screens (6)
- Nonskid deck center walkway & walk-around
- Two cockpit-coordinated Sunbrella® DriFast® foam deck sunpads w/ 316L rails
- Tinted, tempered curved-glass windshield w/center walk-thru, polished stainless frame & windshield wipers
- Radar arch w/mast light flagstaff & white air horn
- Clarion® waterproof transom-mounted stereo control
- Extended intergrated swim platform w/conceal stainless swim ladder & pull-up cleats
- Transom shower w/hot & cold controls
- Molded transom trunk w/pneumatic lifts, fender storage, storage for cockpit tables & cushion
- 120V shorepower w/fail-safe galvanic isolator & 30-amp cord
- Polished stainless shorepower, cable TV, phone hookups & chromed city water inlet

Cockpit

- Continuous molded deck & cockpit liner
- Molded in-dash forward deck access steps w/316L stainless handrail
- Burl wood-finish dash panels, Ritchie® compass, digital depth sounder, Raymarine Hybridtouch color chartplotter, Livorsi® chromed shifters/throttles w/in-handle outdrive trim switch, Dino tilt steering wheel w/burl insets, auxiliary 12V outlet, tilt wheel in leather wrapped stainless & lockable under-dash storage compartment
- Mercury DTS w/SmartCraft™ VesselView
- Electronic shift & throttle controls
- Bennett trim tab switches & indicators
- Clarion® dash-mounted stereo control, six 6 1/2" speakers w/polished stainless grilles, 200W amplification, 200W cockpit subwoofer & iPod™/MP3 port
- Illuminated waterproof accessory rocker switches
- 12 polished stainless drink holders
- Cockpit/swim platform blue/white LED courtesy lights w/handheld remote control
- Integral 316L stainless steel safety rails
- Weather-resistant cockpit seating
- Twin command seating w/dual-position helm and companion seats
- Port lounge w/fiberglass-lined storage
- Aft U-shaped lounge seating w/fiberglass-lined storage, two dual-height tables and sunpad inserts
- Disconnect switch for auxiliary 12V power
- Molded wetbar w/integrated sink, corian countertop, trash container, 316L stainless steel safety rail & 120V GFCI outlet
- Demand water system w/55-gallon capacity
- Fire extinguisher
- Battery parallel emergency switch
- Custom patterned cockpit carpet
- Pneumatic-assist transom door
- Bimini top, front & side curtains w/easy-mount zipper connectors & extended aft cockpit enclosure.

Cabin

- Sliding/locking cabin door
- Cherry woodgrain-finish entry steps
- American Cherry woodgrain-finish flooring throughout cabin
- Forward stateroom w/privacy curtain, centerline bed w/Sensus memory foam mattress & storage below

- Individual reading lights
- Two cedar-lined forward stateroom hanging lockers w/automatic lights
- Curved Ultraleather sofa seating w/dual height high-gloss Deep Cherry wood dining tables & filler cushions
- Custom decor pillows and draperies
- Cabinetry in high-gloss Deep Cherry finish
- 18,000 BTU reverse air conditioner w/digital climate control
- 22' LCD HDTV DVD combo player in main salon w/dockside access cord
- Clarion AM/FM/CD stereo w/changer control
- Ultraleather aft cabin lounge/double berth, filler cushions & privacy enclosure
- Cedar-lined aft cabin hanging locker w/automatic light
- Removable high-gloss, Deep Cherry wood cocktail table
- Built-in WalVac sweeper system
- In-floor storage compartments
- Complete galley in high-gloss Deep Cherry finish w/storage and hardwood dovetailed drawers, full Corian countertop, beverage center, polished stainless steel sink, concealed 2-burner electric stove w/safety shut off switch, 120V/12V stainless steel refrigerator, microwave oven & concealed in-counter trash container
- Fire extinguisher
- Demand water system w/one-point water fill for freshwater tank
- 120V water heater w/heat exchanger
- Molded private head compartment w/molded vanity, lower doors in high-gloss Deep Cherry Finish, Corian counter, polished stainless steel sink w/swivel faucet, Vacuflush unit w/holding tank & dockside pump out, separate stall shower w/hinged acrylic door & exhaust fan
- Two carbon monoxide detectors

Engine

- Twin Mercury 8.2 MAG SeaCore 380HP with 222 hours
- 7.5 KW/120V Kohler generator with 188 hours
- Courtesy lighting
- Fume detector
- Automatic fire extinguisher
- Thru-bolted engine mounts
- Three marine batteries w/battery retainers
- Disconnect switches for starting batteries
- Battery parallel emergency switch
- 60 amp battery charger

- Active and passive galvanic corrosion protection systems
- Rotary bilge blowers
- Automatic bilge pump
- Bilge high water alarm
- Bennett trim tabs
- Polished stainless steel props

BROKERS REMARKS

This vessel has been meticulously maintained by the owner. Within the last six months the bottom has been done and engines serviced.

This vessel will create life long memories for you and your family !

Exclusions

Owner's personal belongings.

Disclaimer

The Company offers the details of this vessel or yacht in good faith but cannot guarantee or warrant the accuracy of this information nor warrant the condition of the vessel. A buyer should instruct his representatives, agents, or his surveyors, to investigate such details as the buyer desires validated. This vessel or yacht is offered subject to prior sale, price change, or withdrawal without notice.

PHOTOS

34' Formula PC 2012



34' Formula PC 2012



Bow



Bow



Radar arch



Radar arch



Helm Station



Helm Station



Helm Station



Hours



Axis skyhook



Axis



Electronic shift & throttle controls



VHF



Cabin entry



Forward stateroom



Cabin



Cabin seating



Cabin seating



Aft cabin lounge



Aft cabin lounge



Head compartment



Galley



Galley



Two burner electric stove



Helm seating



Wet bar



Wet bar



Cockpit seating



Cockpit seating



Cockpit seating



Bimini top



Engines



Engines



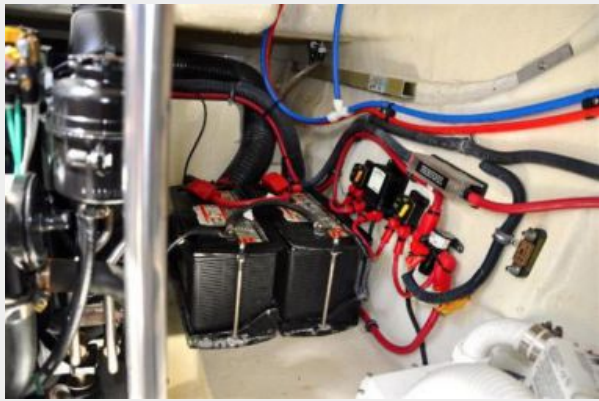
Generator



Generator



Engine compartment



Engine compartment



Swim platform



Transom storage



34' Formula PC 2012



Profile



34' Formula PC 2012



34' Formula PC 2012



Outdrives



34' Formula PC 2012



CONTACTS

Andrey Shestakov, leading yacht broker of the sales department of Shestakov Yacht Sales Inc. Shestakov Yacht Sales Inc., the official representative of the Miami/Fort Lauderdale FL headquarters.

Contact details

Email: andrey@shestakovyachtsales.com

Web: shestakovyachtsales.com/en/

Telephones

USA: +1(954)274-4435

Office hours

Monday – Saturday: **9:00 - 21:00** EDT

Sunday: **closed**

Address



Harbour Towne Marina, 850 NE 3rd St,
STE 213, Dania, FL 33004