

DISTRESSED AQUASITIONS — SEA RAY



Судостроитель: SEA RAY

Год постройки: 1999

Модель: Крейсер

Цена: **ЦЕНА ЯХТЫ ПО ЗАПРОСУ**

Местонахождение: United States

Длина общая: 46' 0" (14.02m)

Ширина: 14' 8" (4.47m)

Мин. осадка: 3' 6" (1.07m)

Макс. осадка: 3' 8" (1.12m)

Крейс. скорость: 21 Kts. (24 MPH)

Макс. скорость: 25 Kts. (29 MPH)

Купить **DISTRESSED AQUASITIONS — SEA RAY** а также выбрать подходящую вам яхту из нашего каталога яхт вам поможет опытный яхтенный брокер Андрей Шестаков. На сегодняшний день компания **Shestakov Yacht Sales Inc.** имеет большое количество яхт в собственном списке продаж, а также тесно сотрудничает со всеми крупными яхтенными производителями по всему миру.

Для того чтобы купить яхту **DISTRESSED AQUASITIONS — SEA RAY** а также проконсультироваться по любому вопросу связанному с покупкой, продажей, чартером яхт позвоните по телефону **+7(918)465-66-44**.

ОГЛАВЛЕНИЕ

| | |
|-------------------------------|----|
| ОГЛАВЛЕНИЕ | 2 |
| ХАРАКТЕРИСТИКИ | 5 |
| Основная информация | 5 |
| Размеры | 5 |
| Скорость, вместимость и масса | 5 |
| Размещение | 5 |
| Корпус и палуба | 6 |
| Информация о двигателе | 6 |
| ПОДРОБНОЕ ОПИСАНИЕ | 7 |
| Walkthrough | 7 |
| Salon | 7 |
| Galley | 7 |
| Master Cabin | 8 |
| Master Head | 8 |
| Mid Cabin | 9 |
| Mid Head | 9 |
| Foredeck | 9 |
| Arch Equipment | 10 |
| Lower Cockpit Deck Area | 10 |
| Upper Cockpit Helm Area | 10 |
| Engine Room | 10 |
| Electrical | 11 |
| Remarks | 11 |
| Exclusions | 11 |
| Disclaimer | 11 |
| Исключения | 12 |
| Отказ от ответственности | 12 |
| ФОТОГРАФИИ | 13 |

| | |
|----------------------------|----|
| Salon Looking Forward | 13 |
| Salon Looking to Starboard | 13 |
| Salon Convertible Settee | 13 |
| Salon Looking Forward | 13 |
| Salon to Port | 13 |
| Galley to Port | 13 |
| Fridge & Salon TV | 14 |
| Master Looking Forward | 14 |
| Master to Starboard | 14 |
| Master to Port | 14 |
| Master Head | 14 |
| Mid Cabin | 14 |
| Mid Cabin to Port | 15 |
| Mid Cabin to Starboard | 15 |
| Mid Head | 15 |
| Bow | 15 |
| Bow Cushions | 15 |
| Custom Bow Seat | 15 |
| Side Decks | 16 |
| Windlass Detail | 16 |
| Aft Lounge Seat | 16 |
| Aft Sun Lounge Position | 16 |
| Aft Facing Cockpit Seat | 16 |
| Cockpit Sink | 16 |
| Hydraulic Lift | 17 |
| Stern Shot | 17 |
| Aft Trunk | 17 |
| Helm to Starboard | 17 |
| Helm to Port | 17 |

| | |
|----------------------------|-----------|
| Garmin Fish Finder Page | 17 |
| Blue Tooth Stereo | 18 |
| Helm to Starboard Side | 18 |
| Cockpit Electrical Panel | 18 |
| Engine Room Access | 18 |
| Starboard Engine | 18 |
| Port Engine | 18 |
| Generator | 19 |
| Generator Hour Meter | 19 |
| 4 Color Cockpit LED Lights | 19 |
| Port Engine Hours | 19 |
| Alternate Profile | 19 |
| Alternate Profile | 19 |
| Alternate Profile | 20 |
| Alternate Profile | 20 |
| КОНТАКТЫ | 21 |
| Контактная информация | 21 |
| Телефоны | 21 |
| Время работы | 21 |
| Адрес | 21 |

ХАРАКТЕРИСТИКИ

Основная информация

Тип судна: Крейсер

Подкатегория: Express

Модельный год: 1999

Год постройки: 1999

Страна: United States

Верх: Radar Arch and Bimini

Размеры

Длина общая: 46' 0" (14.02m)

Ширина: 14' 8" (4.47m)

Мин. осадка: 3' 6" (1.07m)

Макс. осадка: 3' 8" (1.12m)

Скорость, вместимость и масса

Крейс. скорость: 21 Kts. (24 MPH)

Макс. скорость: 25 Kts. (29 MPH)

Водоизмещение: 30000 Pounds

Чистый вес: 15 Pounds

Вместимость воды: 100 Gallons

Вместимость сточного бака: 60 Gallons

Объем топливного бака: 400 Gallons

Размещение

Всего кают: 2

Спальные места: 4

Всего ком. состава: 2

Корпус и палуба

Материал корпуса: Fiberglass

Материал палубы: Fiberglass

Комплектация корпуса: Modified V-Hull

Дизайнер корпуса: Sea Ray

Дизайнер экстерьера: Sea Ray

Дизайнер интерьера: Sea Ray

Информация о двигателе

Двигатели: 2

Производитель: Cummins

Модель: 450 CE 8.3 I

Тип двигателя: Inboard

Тип топлива: Diesel

ПОДРОБНОЕ ОПИСАНИЕ

Walkthrough

The Cockpit is entered via port or starboard boarding steps or from the hydraulic swim platform and through the transom door. The deck is faux teak and looks great. The aft seat expands to a sun bed and the forward seat faces aft.

A bar area is to port. The Helm is raised one step and offers great visibility and a wraparound electronics console.

Going below the Galley is immediately to port, the Mid Cabin is aft with a private Head.

The Salon is next forward and open to the Galley. The Owner's Cabin is forward with a walk around berth and a private Head with a stall shower.

Salon

The cabin is entered slightly to port via a sectional Lexan sliding door and three Pirelli style vinyl steps. The entire cabin is carpeted.

Immediately to starboard is a single Ultra Suede chair/recliner with a footrest.

Next forward is a built in cherry end table with a central vacuum outlet below.

Next forward is a matching Ultra Suede sofa that converts to sleep two. The sofa expands to a bed with the touch of a button. In front of the sofa is a hi-lo cherry and coffee table. Above the sofa and four cherry cabinets. Between the sofa and the cabinet are two opening stainless steel portholes with demi drapes.

Over the aft chair is the two door main electrical panel.

Above are five halogen lights and a deck hatch with a sliding Ocean Air screen or cover.

Also in the Salon are Onkyo stereo speakers, a mirror forward, a 19" Panasonic TV/VCR combo built into the cabinet above the fridge.

There is additional dry storage under the sole via hatches.

Rope lighting above the cabinets serve as accent lighting.

To port is the Galley.

Galley

To port immediately at the bottom of the steps is the L shaped Galley. Equipment includes:

Molded Corian like countertops Norcold refrigerator/freezer with cherry w/split access cherry door
Molded sink w/cover & spray faucet Trash chute next to sink Sharp Carousel Convection 2
microwave behind cherry doors (2) Deep cabinets above countertop w/sliding doors Kenyon 3
burner Ceran top cooktop with Coran cover (2) Large cabinets under sink (4) Storage drawers (2)
Large cabinets forward with Lazy Susan type storage within

Master Cabin

Just forward of the Salon is the Master Cabin with an oversize queen size island berth off the forward bulkhead. The headboard has inset mirrored panels and dedicated reading lights in the soffit above. Overhead is a Bomar deck hatch with an Ocean Air sliding screen and shade. Carpeted steps port and starboard make access to the bed easier.

Aft to port is a cabinet housing a 13" Panasonic TV/VCR player and the cabin's digital AC controls. Next aft is a cabinet with five shelves inside and a dressing mirror outside.

Next aft is an access door to the forward Head.

To starboard is a two door cedar lined auto lit hanging locker with shelves within and mirrors on the outside of the door. Below is a vanity with a stool and small flip up storage cuddy.

Facing forward on the starboard side is a Samsung 20" LCD TV.

There is additional storage via two drawers under the bed.

Also in this cabin are two stereo speakers with volume control, a hatch in the wood floor for storage and three additional halogen mini spots.

On the hull sides are two port and two starboard fixed dead lights behind drapes.

Master Head

The Master Head has two entry doors, one from the Master and one from the Salon.

The Head has a fiberglass inner liner for ease of maintenance. There is a vanity with one cabinet below and an under mount molded sink above. Two large mirrored doors above serve as a medicine cabinet.

The toilet is a Vacuflush model and has a fold down cover.

The stall shower has a clear curved sliding door and side light, a seat and opening stainless steel porthole, a handheld or wall mountable shower fixture and a light.

Also in the Head are two halogen mini spots, a GFCI outlet and an AC vent.

Mid Cabin

The Mid Cabin has an L shaped settee that easily converts to a bed. There is a large mirrored panel aft, a mirrored door cedar lined hanging locker to starboard and six cabinet doors and two storage drawers.

A cherry door hides a 12" Panasonic TV/VCR combo.

There are four halogen mini spots, an AC vent and an opening stainless steel porthole with drapes.

The cabin can be enclosed by a two panel sliding door, forward.

Also within this cabin is a cherry door accessing the private Head and two opening stainless steel portholes with drapes for ventilation.

Mid Head

The Mid Head has a vanity with a cabinet below, an under mount molded sink above, two mirrored medicine cabinet doors, a Vacuflush toilet with a fold down cover and a "Wet" shower with a handheld or wall mountable fixture and a shower curtain. The head itself has a fiberglass inner liner for ease of maintenance.

There are also two halogen lights, an exhaust fan and an opening stainless porthole with obscured glass.

Foredeck

Fiberglass nonskid decks (4) Fixed port lights in hull (2) Opening port lights in hull Chain locker access hatch Freshwater spigot in chain locker Stainless steel welded bow rails (2) Bomar 30" deck hatches, Main Cabin, Bow Stateroom w/Sunbrella covers Molded bow pulpit Stainless steel anchor chute with nylon roller Dedicated anchor line cleat Lofrans Progress 1 12 volt 1000 watt windlass with capstan gypsy & integral hawse pipe Up & down foot switches for windlass Plow type anchor with shot of 3/8 BB chain & 200' of 3/8" nylon rode ACR searchlight on pulpit Stainless steel handrails at bow sun pad area Custom boat seat cushion all way forward (4) Drink holders at bow sun pad area 110 Volt outlet at bow (2) Windshield wipers with washers International Navigation lights Handrails at side deck on windshield frame Stainless steel windshield frame Sunbrella windshield cover Molded fiberglass toe rails Clear vinyl connector between windshield & Bimini Forward deck scupper deck drains

Arch Equipment

Fiberglass radar arch Raymarine open array 48" radar scanner Sea Tel Sat TV dome
Raymarine GPS antenna Garmin GPS antenna Glomex Terrestrial TV antenna VHF antenna
Anchor light/stern light on pole

Lower Cockpit Deck Area

Faux teak over fiberglass deck Hinged walk thru transom door Full Cockpit cover from Bimini extension to transom, new 2013 tan Sunbrella Rear Bimini top, forward Bimini top L shaped seating aft and to starboard with storage below Starboard side faux teak covered boarding steps with storage below Starboard side aft facing wrap around seating with storage below Portside side deck faux teak covered boarding step Fixed fiberglass table with pedestal Large engine hatch access on gas shocks Built in drink holders at aft seat Hot & cold shower at transom door Aft seat electrically slides forward to form sun bed U Line Cockpit icemaker behind FRP door Fiberglass molded sink under cover Aft facing trunk type storage locker Freshwater spigot in trunk Freshwater dockside inlet in trunk (2) Flush mount rod holders Hydraulic tender platform with faux teak decking & chocks for buyer supplied tender Magma stainless steel Bar BQ mounted in rod holder Clarion subwoofer (4) Clarion stereo speakers (3) Overhead arch lights, 4 color LED Stainless steel telescoping swim ladder Steel drink holders (12) 4 Color LED Deck level courtesy lights Onan generator gauges

Upper Cockpit Helm Area

Three person upholstered bench seat with storage below Upholstered swivel helm chair with flip up bolster Faux teak decking over fiberglass deck Three panel stainless steel trimmed windshield Center lower section of windshield opens electrically Raymarine Ray 210 VHF with remote mount speaker Raymarine R41 XX 48 mile radar Garmin 5212 12" MFD touch screen plotter/sounder Raymarine Ray Pilot 650 autopilot Ritchie 4" magnetic compass Full stainless steel trimmed engine gauges Helm cover Hydraulic clutch & throttle controls Trim tab controls West Marine AM/FM/CD/Sat stereo w/Blue Tooth connectivity Tilt wood helm wheel ACR searchlight control Raytheon 601 XX plotter control Sea Ray systems monitor Horn Garmin GM1 digital depth Windlass controls Bilge pump controls 4 Color LED Deck level courtesy lights Sea Fire engine shutdown override system

Engine Room

(4) Step stainless steel ladder Cockpit to Engine Room Vinyl sole between engines Hydraulic engine controls Fireboy Engine Room fire suppression system (2) Bilge blowers Reverso 5 Point oil change system 2" Stainless steel prop shafts PSS dripless shaft seals Engine alarms audible

and visual ZF 280 IV 1.77 to 1 transmission ratio Vee drive configuration Dual Racor 1000 fuel filters for main engine with vacuum gauges Racor 500 fuel filter for generator Fuel shutoff valves at Racors Shureflow 12V water pump w/accumulator tank 230 Volt 11 gallon hot water heater Sealand Vacuflush toilet system, freshwater flush Shower sumps Hydraulic steering system (3) Coolant recovery bottles (2) Spare props mounted in bilge Freshwater spigot in engine Direct reading temp & oil pressure gauges on engine GFCI outlet Airsep crankcase ventilation system

Electrical

12 Volt DC system 120V/240 Volt AC system (2) 8D 1340 CCA batteries for engine/house (1) 12 Volt battery for generator Main DC panel w/(22) breaker protected circuits DC panel at helm w/(15) push type breakers DC panel at bar area w/(24) breaker protected circuits & electrical battery solenoid switches Main AC panel w/(5) 240 volt breaker protected circuits Main AC panel w/(11) 120 volt breaker protected circuits Promariner Protech Pro Nautic 12 40 amp charger (2) 12 volt outlet Salon & Helm 50 Amp 120/240 volt shore power w/50' Glendinning cable master in aft trunk Analog volt & amp meters for AC system Analog volt & amp meters for DC system Glavonic isolator system (2) Battery shutoff switches at Cockpit panel TV/phone connections in aft trunk Westerbeke 8 KW generator 910 hours Generator gauges at Cockpit panel by outside bar area

Remarks

Actual LOA is 51'4". Arguably one of the best values in a 460 Sundancer on the market, DISTRESSED AQUASITIONS is very worthy of your inspection.

Noteworthy updates/equipment include: • Faux teak decking (exterior) • 2013, All enclosure curtains and Sunbrella covers replaced • Hydraulic platform • Garmin 5212 touch screen plotter/depth finder • Only 640 original hours on main engines

Easy to see in Ft. Lauderdale and very seriously for sale.

Exclusions

While every effort was made to list all pertinent included equipment aboard DISTRESSED AQUASITIONS, there are some personal belongings aboard. Prospective purchasers should assume any item not specifically mentioned herein will not convey at closing.

Disclaimer

The Company offers the details of this vessel in good faith but cannot guarantee or warrant the

accuracy of this information nor warrant the condition of the vessel. A buyer should instruct his agents, or his surveyors, to investigate such details as the buyer desires validated. This vessel is offered subject to prior sale, price change, or withdrawal without notice.

Исключения

При продаже яхты исключаются личные вещи владельца.

Отказ от ответственности

Компания предоставляет описание судна или яхты добросовестно, но не может гарантировать точность этой информации, а также не ручается за техническое состояние. Покупатель должен проинструктировать своих агентов или оценщиков исследовать представленную информацию более подробно, по собственному желанию. Продажа судна или яхты, изменение цены или снятие с продажи будет происходить без предварительного уведомления.

ФОТОГРАФИИ

Salon Looking Forward



Salon Looking to Starboard



Salon Convertible Settee



Salon Looking Forward



Salon to Port



Galley to Port



Fridge & Salon TV



Master Looking Forward



Master to Starboard



Master to Port



Master Head



Mid Cabin



Mid Cabin to Port



Mid Cabin to Starboard



Mid Head



Bow



Bow Cushions



Custom Bow Seat



Side Decks



Windlass Detail



Aft Lounge Seat



Aft Sun Lounge Position



Aft Facing Cockpit Seat



Cockpit Sink



Hydraulic Lift



Stern Shot



Aft Trunk



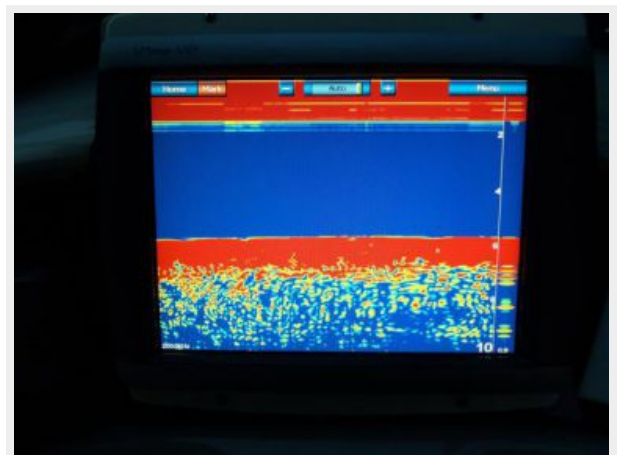
Helm to Starboard



Helm to Port



Garmin Fish Finder Page



Blue Tooth Stereo



Helm to Starboard Side



Cockpit Electrical Panel



Engine Room Access



Starboard Engine



Port Engine



Generator



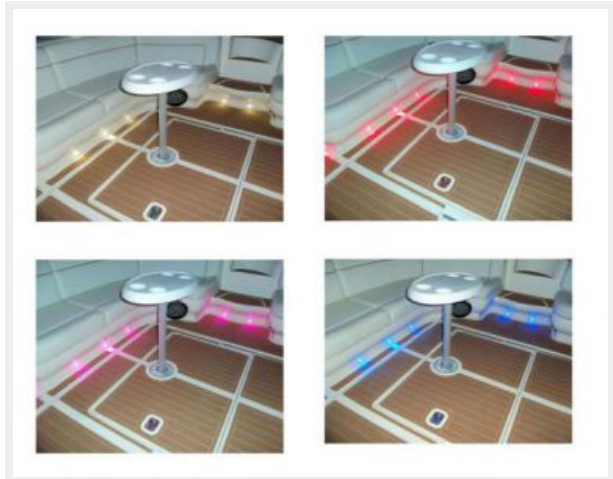
Generator Hour Meter



Port Engine Hours



4 Color Cockpit LED Lights



Alternate Profile



Alternate Profile



Alternate Profile



Alternate Profile



КОНТАКТЫ

Андрей Шестаков (Andrey Shestakov) – ведущий яхтенный брокер отдела продаж яхт и судов компании Shestakov Yacht Sales Inc. Официальный представитель Shestakov Yacht Sales Inc. для русскоговорящих клиентов в центральном офисе компании в Майами/Форт Лодердейл/Флорида/США.

Контактная информация

Email: andrey@shestakovyachtsales.com

Web: shestakovyachtsales.com

Телефоны

Краснодарский край: **+7(918)465-66-44**

США, Майами, Флорида: **+1(954)274-4435**

Время работы

Понедельник – Суббота: **9:00 - 21:00**
EDT

Воскресенье: **Закрето**

Адрес



Harbour Towne Marina, 850 NE 3rd St,
STE 213, Dania, FL 33004