

CARPE DIEM — INTERMARINE



Builder: INTERMARINE

Year Built: 2001

Model: Motor Yacht

Price: PRICE ON APPLICATION

Location: Bahamas

LOA: 95' 0" (28.96m)

Beam: 21' 3" (6.48m)

Max Draft: 6' 0" (1.83m)

Cruise Speed: 16 Kts. (18 MPH)

Max Speed: 18 Kts. (21 MPH)

Our experienced yacht broker, Andrey Shestakov, will help you choose and buy a yacht that best suits your needs **CARPE DIEM — INTERMARINE** from our catalogue. Presently, at Shestakov Yacht Sales Inc., we have a wide variety of yachts available on our sale's list. We also work in close contact with all the big yacht manufacturers from all over the world.

If you would like to buy a yacht **CARPE DIEM — INTERMARINE** or would like help answering any questions concerning purchasing, selling or chartering a yacht, please call **+1(954)274-4435**

TABLE OF CONTENTS

| | |
|--|---|
| TABLE OF CONTENTS | 2 |
| SPECIFICATIONS | 4 |
| Overview | 4 |
| Basic Information | 4 |
| Dimensions | 4 |
| Speed, Capacities and Weight | 4 |
| Accommodations | 4 |
| Hull and Deck Information | 4 |
| Engine Information | 5 |
| DETAILED INFORMATION | 6 |
| 95' Intermarine Motor Yacht CARPE DIEM | 6 |
| Accommodations and Layout | 6 |
| Galley | 6 |
| Hull and Deck | 7 |
| Electronics and Entertainment | 7 |
| Audio Visual | 7 |
| Electrical | 7 |
| Remarks | 8 |
| Shipyard maintenance period performed in July 2015 included: | 8 |
| Exclusions | 8 |
| Disclaimer | 8 |
| PHOTOS | 9 |
| Aft | 9 |
| Flybridge Controls | 9 |
| Flybridge Helm | 9 |
| Flybridge | 9 |
| Flybridge | 9 |
| Flybridge Looking Forward | 9 |

| | |
|-------------------|----|
| Aft Deck | 10 |
| Pilothouse | 10 |
| Controls | 10 |
| Salon | 10 |
| Salon Looking Aft | 10 |
| Dining | 10 |
| Galley | 11 |
| Galley | 11 |
| Day Head | 11 |
| Master Stateroom | 11 |
| Master Bathroom | 11 |
| Master Shower | 11 |
| VIP Stateroom | 12 |
| VIP Bathroom | 12 |
| Guest Bathroom | 12 |
| Guest Stateroom | 12 |
| Crew Quarters | 12 |
| Crew Quarters | 12 |
| Crew Bathroom | 13 |
| Engine Room | 13 |
| GA Plans | 13 |
| CONTACTS | 14 |
| Contact details | 14 |
| Telephones | 14 |
| Office hours | 14 |
| Address | 14 |

SPECIFICATIONS

Overview

Basic Information

| | |
|-----------------------|------------------|
| Category: Motor Yacht | Model Year: 2001 |
| Year Built: 2001 | Country: Bahamas |

Dimensions

| | |
|--------------------------|----------------------|
| LOA: 95' 0" (28.96m) | Beam: 21' 3" (6.48m) |
| Max Draft: 6' 0" (1.83m) | |

Speed, Capacities and Weight

| | |
|--------------------------------|------------------------------|
| Cruise Speed: 16 Kts. (18 MPH) | Max Speed: 18 Kts. (21 MPH) |
| Gross Tonnage: 166 Pounds | Water Capacity: 1200 Gallons |
| Holding Tank: 400 Gallons | Fuel Capacity: 4300 Gallons |

Accommodations

| | |
|---------------------|---------------|
| Total Cabins: 3 | Sleeps: 6 |
| Captain Cabin: True | Crew Cabin: 2 |
| Crew Sleeps: 4 | Crew Heads: 2 |

Hull and Deck Information

| | |
|---------------------------|---------------------|
| Hull Material: Fiberglass | Deck Material: Teak |
|---------------------------|---------------------|

Engine Information

| | |
|-----------------------------|--------------------------|
| Engines: 2 | Manufacturer: MTU |
| Engine Type: Inboard | Fuel Type: Diesel |

DETAILED INFORMATION

95' Intermarine Motor Yacht CARPE DIEM

95' Intermarine Motor Yacht Carpe Diem represents one of the finest raised pilothouse yachts ever built. She is constructed to the best possible quality by Intermarine of Savannah, Georgia and offers three staterooms plus crew and a gorgeous interior with very spacious living areas in the salon, "country kitchen" and flybridge. Always been well maintained by a professional crew.

Accommodations and Layout

Entering the salon via a starboard foyer area (stone flooring), a dining table for 6 is separated from a large U-shaped sofa to starboard and a bar (marble countertop) to port. The entire interior is paneled in rich, blonde anigre high gloss wood with magilite ceiling panels (anigre inserts), and off-white pile carpeting. Forward of the dining area is a white vinyl covered entertainment center. Large windows in the salon offer plenty of viewing and daylight with drapes and valence window accents. Interior decor was designed by Pavlik Design. To port of the salon is a stairway down to the owner's staterooms. A full-beam master stateroom is forward featuring walk-in cedar closets port and starboard, a centerline king-sized bed and a settee to starboard. A full-beam his/hers bath is forward; finished in lovely marble with a Jacuzzi/shower in the center. Aft of the foyer is an ensuite VIP stateroom to starboard featuring a queen-sized walk around bed. To port is an ensuite Guest stateroom with twin berths. Baths for each guest stateroom are found aft with stall showers and marble countertops. Note that all owner's staterooms are finished in gloss anigre wood. Plenty of storage is found under beds, built in drawers and walk-in closets. Forward of the salon is country kitchen style galley with a center island and a settee forward. The crew area is access forward and starboard of the galley. A captain's stateroom has its own bath, desk and a double bed. Forward is another crew stateroom with over/under twin berths and separate bath. The raised pilothouse is accessed via stairs off the starboard foyer with further access to the flybridge and features a single helm chair and settee with a table.

Galley

This spacious area features plenty of counterspace to port in an L-shaped arrangement with an 'island' in the center (under-counter barrel chairs for casual seating) and a settee with a wood topped table forward to seat 6. Countertops are finished in corian. Flooring is Amtico. GE Monogram cooktop with oven GE Monogram microwave oven with exhaust vent GE Monogram refrigerator/freezer (side by side) Kitchenaid dishwasher GE Monogram trash compactor Double sink with disposal Anigre finished cabinetry Jennair electric grill (flybridge) Icemaker and refrigerator (flybridge, salon bar and aft deck) Wet bar (salon and flybridge) Maytag and Whirlpool washer/dryers

Hull and Deck

A spacious aft deck features a 'euro style' transom, a comfortable settee with table aft and a bar to starboard. The swim platform, aft stairs and aft deck are teak covered. The side, forward and flybridge decks are white Awlgrip non-skid. Access to the flybridge is via the wheelhouse and features plenty of shaded seating to starboard with a helm forward and a bar to port with 4 fixed stainless steel barstools. Double bimini top (flybridge) - New 7/15 Radar arch (flybridge) 3 Stidd helm chairs Marquipt 1500# davit 16' Novurania RIB with 4 Stroke Yamaha 90 hp engine (2001) Flybridge lexan windscreen with stainless steel framing Hullside opening portlights Stainless steel handrails (main deck) Trim tabs Maxwell model 4500 electric anchor windlass Fortress anchor w/anchor chain (200') Spare Fortress anchor 2- ACR 100 spotlights with remotes Liferaft USCG safety equipment Engine Room and Mechanical Systems 2- MTU/DDEC 12V2000 diesel engines-M90, 1,350 hp, 3100 hours-Serviced 7/15 Sea chests for raw water systems Clean and used lubricating oil tanks (120 usg each) Fuel/water separator filters with vacuum gauge and water sensors Aqua Air 12 ton reverse cycle chilled water air conditioning system— serviced 7/15 including 2 new raw water pumps. Naiad 302 stabilizers-serviced 7/15 Naiad 12HT 38 hp hydraulic bow thruster (PTO port genset) Jastram electro/hydraulic steering system (dual pumps) Headhunter heads and macerator FM200 fire suppression system (engine room) Engine room air intakes with demisters Rule bilge pumps

Electronics and Entertainment

PC with Nobletec Admiral software plotter Furuno FR1510 color radar (pilothouse) Furuno FR8051 radar (flybridge) Robertson AP20 autopilot with flybridge remote Datamarine wind/speed/depth (pilothouse) Datamarine multi (flybridge) 2 Icom M127 VHF Motorola cellular system Sea Tel 2494 satellite television receiver SEA 235 SSB transceiver Furuno weather fax SEA 235 SSB

Audio Visual

50" Pioneer plasma TV w/ Sony DVD/VCR (salon) Marantz surround sound and Yamaha AV receiver (salon) 33" NEC plasma TV w/Sony DVD/VCR (MSR) 13" Panasonic TV's w/VCR plus Panasonic am/fm/cd players (Guest and Crew staterooms) Sony TV w/ DVD (Galley) Bose speakers (aft deck, flybridge)

Electrical

2- 45 KW Northern Lights gensets 2- 75' 100 amp shore power cables with Glendinning reels 12/24 vdc distribution panels 120/240 vac distribution panels Ship service, starting and electronics batteries Battery chargers-Sentry 24vdc 30am, 40 amp and 60 amp Emergency lighting-24vdc Interior halogen lighting Engine room fluorescent lighting Navigation lighting Exterior courtesy lighting

Remarks

Luxury, comfort and style are seamlessly combined in this 95' raised pilothouse motoryacht. Her main salon is well appointed and richly decorated featuring high gloss Anigre wood, imported stone and the finest fabrics. The fully upgraded country kitchen /galley offers the perfect place to get together for casual family meals. She easily accommodates six guests, a captain and two crew members. All three of her gracious staterooms feature ensuite baths, large closets and complete entertainment systems with DDS. "Carpe Diem's" spacious flybridge is the consummate place for outdoor entertaining with plenty of shade and fully equipped with a wet bar, refrigerator and icemaker. Whether entertaining guests formally or casually cruising with friends and family, this luxurious yacht creates a warm and inviting ambiance in which to relax and enjoy. "Carpe Diem" is built to the extremely high standards which Intermarine Savannah is known for. She has always been perfectly maintained and gleams with perfection. Motivated sellers encourage offers!

Shipyard maintenance period performed in July 2015 included:

Haul - complete bottom job - full sanding, two coats of primer and two coats of paint. New zincs installed. Stabilizer fins removed, inspected and new seals installed. Air conditioning serviced - 2 new raw water pumps, 1 new VFD, system descaled and flushed. Main side and fore decks repainted with Matterhorn white non-skid. Bimini tops canvas replaced. Main engines serviced by RPM diesel - oil and filters changed. New multi-function GPS / depth / plotter installed on flybridge with new transducer.

Exclusions

Owner's personal belongings.

Disclaimer

The Company offers the details of this vessel or yacht in good faith but cannot guarantee or warrant the accuracy of this information nor warrant the condition of the vessel. A buyer should instruct his representatives, agents, or his surveyors, to investigate such details as the buyer desires validated. This vessel or yacht is offered subject to prior sale, price change, or withdrawal without notice.

PHOTOS

Aft



Flybridge Controls



Flybridge Helm



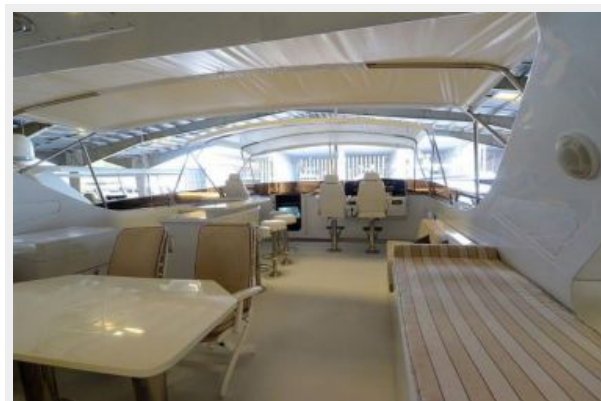
Flybridge



Flybridge



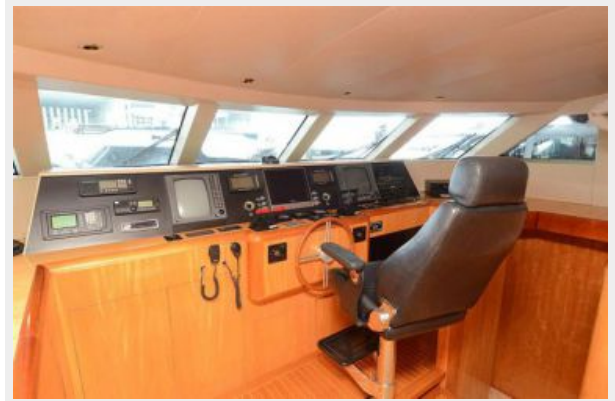
Flybridge Looking Forward



Aft Deck



Pilothouse



Controls



Salon



Salon Looking Aft



Dining



Galley



Galley



Day Head



Master Stateroom



Master Bathroom



Master Shower



VIP Stateroom



VIP Bathroom



Guest Stateroom



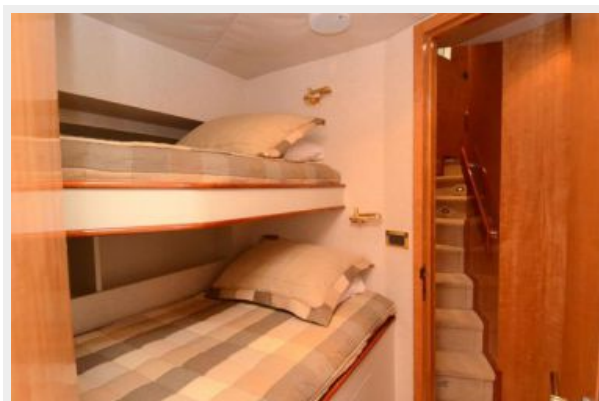
Guest Bathroom



Crew Quarters



Crew Quarters



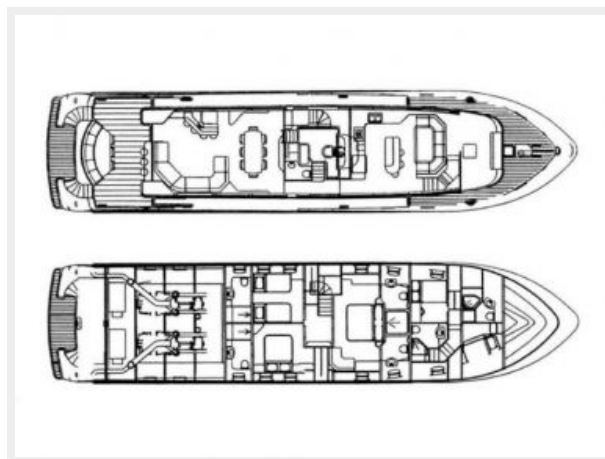
Crew Bathroom



Engine Room



GA Plans



CONTACTS

Andrey Shestakov, leading yacht broker of the sales department of Shestakov Yacht Sales Inc. Shestakov Yacht Sales Inc., the official representative of the Miami/Fort Lauderdale FL headquarters.

Contact details

Email: **andrey@shestakovyachtsales.com**

Web: shestakovyachtsales.com/en/

Telephones

USA: **+1(954)274-4435**

Office hours

Monday – Saturday: **9:00 - 21:00 EDT**

Sunday: **closed**

Address



Harbour Towne Marina, 850 NE 3rd St,
STE 213, Dania, FL 33004