

CARPE DIEM — INTERMARINE



Судостроитель: INTERMARINE

Год постройки: 2001

Модель: Моторная яхта

Цена: **ЦЕНА ЯХТЫ ПО ЗАПРОСУ**

Местонахождение: Bahamas

Длина общая: 95' 0" (28.96m)

Ширина: 21' 3" (6.48m)

Макс. осадка: 6' 0" (1.83m)

Крейс. скорость: 16 Kts. (18 MPH)

Макс. скорость: 18 Kts. (21 MPH)

Купить **CARPE DIEM — INTERMARINE** а также выбрать подходящую вам яхту из нашего каталога яхт вам поможет опытный яхтенный брокер Андрей Шестаков. На сегодняшний день компания **Shestakov Yacht Sales Inc.** имеет большое количество яхт в собственном списке продаж, а также тесно сотрудничает со всеми крупными яхтенными производителями по всему миру.

Для того чтобы купить яхту **CARPE DIEM — INTERMARINE** а также проконсультироваться по любому вопросу связанному с покупкой, продажей, чартером яхт позвоните по телефону **+7(918)465-66-44**.

ОГЛАВЛЕНИЕ

ОГЛАВЛЕНИЕ	2
ХАРАКТЕРИСТИКИ	4
Обзор	4
Основная информация	4
Размеры	4
Скорость, вместимость и масса	4
Размещение	4
Корпус и палуба	4
Информация о двигателе	5
ПОДРОБНОЕ ОПИСАНИЕ	6
95' Intermarine Motor Yacht CARPE DIEM	6
Accommodations and Layout	6
Galley	6
Hull and Deck	7
Electronics and Entertainment	7
Audio Visual	7
Electrical	7
Remarks	8
Shipyard maintenance period performed in July 2015 included:	8
Исключения	8
Отказ от ответственности	8
ФОТОГРАФИИ	9
Aft	9
Flybridge Controls	9
Flybridge Helm	9
Flybridge	9
Flybridge	9
Flybridge Looking Forward	9

Aft Deck	10
Pilothouse	10
Controls	10
Salon	10
Salon Looking Aft	10
Dining	10
Galley	11
Galley	11
Day Head	11
Master Stateroom	11
Master Bathroom	11
Master Shower	11
VIP Stateroom	12
VIP Bathroom	12
Guest Bathroom	12
Guest Stateroom	12
Crew Quarters	12
Crew Quarters	12
Crew Bathroom	13
Engine Room	13
GA Plans	13
КОНТАКТЫ	14
Контактная информация	14
Телефоны	14
Время работы	14
Адрес	14

ХАРАКТЕРИСТИКИ

Обзор

Основная информация

Тип судна: Моторная яхта

Модельный год: 2001

Год постройки: 2001

Страна: Bahamas

Размеры

Длина общая: 95' 0" (28.96m)

Ширина: 21' 3" (6.48m)

Макс. осадка: 6' 0" (1.83m)

Скорость, вместимость и масса

Крейс. скорость: 16 Kts. (18 MPH)

Макс. скорость: 18 Kts. (21 MPH)

Чистый вес: 166 Pounds

Вместимость воды: 1200 Gallons

Вместимость сточного бака: 400 Gallons Объем топливного бака: 4300 Gallons

Размещение

Всего кают: 3

Спальные места: 6

Каюта капитана: Да

Каюты экипажа: 2

Спальных мест экипажа: 4

Комм. состав экипажа: 2

Корпус и палуба

Материал корпуса: Fiberglass

Материал палубы: Teak

Информация о двигателе

Двигатели: 2

Производитель: MTU

Тип двигателя: Inboard

Тип топлива: Diesel

ПОДРОБНОЕ ОПИСАНИЕ

95' Intermarine Motor Yacht CARPE DIEM

95' Intermarine Motor Yacht Carpe Diem represents one of the finest raised pilothouse yachts ever built. She is constructed to the best possible quality by Intermarine of Savannah, Georgia and offers three staterooms plus crew and a gorgeous interior with very spacious living areas in the salon, "country kitchen" and flybridge. Always been well maintained by a professional crew.

Accommodations and Layout

Entering the salon via a starboard foyer area (stone flooring), a dining table for 6 is separated from a large U-shaped sofa to starboard and a bar (marble countertop) to port. The entire interior is paneled in rich, blonde anigre high gloss wood with magilite ceiling panels (anigre inserts), and off-white pile carpeting. Forward of the dining area is a white vinyl covered entertainment center. Large windows in the salon offer plenty of viewing and daylight with drapes and valence window accents. Interior decor was designed by Pavlik Design. To port of the salon is a stairway down to the owner's staterooms. A full-beam master stateroom is forward featuring walk-in cedar closets port and starboard, a centerline king-sized bed and a settee to starboard. A full-beam his/hers bath is forward; finished in lovely marble with a Jacuzzi/shower in the center. Aft of the foyer is an ensuite VIP stateroom to starboard featuring a queen-sized walk around bed. To port is an ensuite Guest stateroom with twin berths. Baths for each guest stateroom are found aft with stall showers and marble countertops. Note that all owner's staterooms are finished in gloss anigre wood. Plenty of storage is found under beds, built in drawers and walk-in closets. Forward of the salon is country kitchen style galley with a center island and a settee forward. The crew area is access forward and starboard of the galley. A captain's stateroom has its own bath, desk and a double bed. Forward is another crew stateroom with over/under twin berths and separate bath. The raised pilothouse is accessed via stairs off the starboard foyer with further access to the flybridge and features a single helm chair and settee with a table.

Galley

This spacious area features plenty of counterspace to port in an L-shaped arrangement with an 'island' in the center (under-counter barrel chairs for casual seating) and a settee with a wood topped table forward to seat 6. Countertops are finished in corian. Flooring is Amtico. GE Monogram cooktop with oven GE Monogram microwave oven with exhaust vent GE Monogram refrigerator/freezer (side by side) Kitchenaid dishwasher GE Monogram trash compactor Double sink with disposal Anigre finished cabinetry Jennair electric grill (flybridge) Icemaker and refrigerator (flybridge, salon bar and aft deck) Wet bar (salon and flybridge) Maytag and Whirlpool washer/dryers

Hull and Deck

A spacious aft deck features a 'euro style' transom, a comfortable settee with table aft and a bar to starboard. The swim platform, aft stairs and aft deck are teak covered. The side, forward and flybridge decks are white Awlgrip non-skid. Access to the flybridge is via the wheelhouse and features plenty of shaded seating to starboard with a helm forward and a bar to port with 4 fixed stainless steel barstools. Double bimini top (flybridge) - New 7/15 Radar arch (flybridge) 3 Stidd helm chairs Marquipt 1500# davit 16' Novurania RIB with 4 Stroke Yamaha 90 hp engine (2001) Flybridge lexan windscreen with stainless steel framing Hullside opening portlights Stainless steel handrails (main deck) Trim tabs Maxwell model 4500 electric anchor windlass Fortress anchor w/anchor chain (200') Spare Fortress anchor 2- ACR 100 spotlights with remotes Liferaft USCG safety equipment Engine Room and Mechanical Systems 2- MTU/DDEC 12V2000 diesel engines-M90, 1,350 hp, 3100 hours-Serviced 7/15 Sea chests for raw water systems Clean and used lubricating oil tanks (120 usg each) Fuel/water separator filters with vacuum gauge and water sensors Aqua Air 12 ton reverse cycle chilled water air conditioning system— serviced 7/15 including 2 new raw water pumps. Naiad 302 stabilizers-serviced 7/15 Naiad 12HT 38 hp hydraulic bow thruster (PTO port genset) Jastram electro/hydraulic steering system (dual pumps) Headhunter heads and macerator FM200 fire suppression system (engine room) Engine room air intakes with demisters Rule bilge pumps

Electronics and Entertainment

PC with Nobletec Admiral software plotter Furuno FR1510 color radar (pilothouse) Furuno FR8051 radar (flybridge) Robertson AP20 autopilot with flybridge remote Datamarine wind/speed/depth (pilothouse) Datamarine multi (flybridge) 2 Icom M127 VHF Motorola cellular system Sea Tel 2494 satellite television receiver SEA 235 SSB transceiver Furuno weather fax SEA 235 SSB

Audio Visual

50" Pioneer plasma TV w/ Sony DVD/VCR (salon) Marantz surround sound and Yamaha AV receiver (salon) 33" NEC plasma TV w/Sony DVD/VCR (MSR) 13" Panasonic TV's w/VCR plus Panasonic am/fm/cd players (Guest and Crew staterooms) Sony TV w/ DVD (Galley) Bose speakers (aft deck, flybridge)

Electrical

2- 45 KW Northern Lights gensets 2- 75' 100 amp shore power cables with Glendinning reels 12/24 vdc distribution panels 120/240 vac distribution panels Ship service, starting and electronics batteries Battery chargers-Sentry 24vdc 30am, 40 amp and 60 amp Emergency lighting-24vdc Interior halogen lighting Engine room fluorescent lighting Navigation lighting Exterior courtesy lighting

Remarks

Luxury, comfort and style are seamlessly combined in this 95' raised pilothouse motoryacht. Her main salon is well appointed and richly decorated featuring high gloss Anigre wood, imported stone and the finest fabrics. The fully upgraded country kitchen /galley offers the perfect place to get together for casual family meals. She easily accommodates six guests, a captain and two crew members. All three of her gracious staterooms feature ensuite baths, large closets and complete entertainment systems with DDS. "Carpe Diem's" spacious flybridge is the consummate place for outdoor entertaining with plenty of shade and fully equipped with a wet bar, refrigerator and icemaker. Whether entertaining guests formally or casually cruising with friends and family, this luxurious yacht creates a warm and inviting ambiance in which to relax and enjoy. "Carpe Diem" is built to the extremely high standards which Intermarine Savannah is known for. She has always been perfectly maintained and gleams with perfection. Motivated sellers encourage offers!

Shipyard maintenance period performed in July 2015 included:

Haul - complete bottom job - full sanding, two coats of primer and two coats of paint. New zincs installed. Stabilizer fins removed, inspected and new seals installed. Air conditioning serviced - 2 new raw water pumps, 1 new VFD, system descaled and flushed. Main side and fore decks repainted with Matterhorn white non-skid. Bimini tops canvas replaced. Main engines serviced by RPM diesel - oil and filters changed. New multi-function GPS / depth / plotter installed on flybridge with new transducer.

Исключения

При продаже яхты исключаются личные вещи владельца.

Отказ от ответственности

Компания предоставляет описание судна или яхты добросовестно, но не может гарантировать точность этой информации, а также не ручается за техническое состояние. Покупатель должен проинструктировать своих агентов или оценщиков исследовать представленную информацию более подробно, по собственному желанию. Продажа судна или яхты, изменение цены или снятие с продажи будет происходить без предварительного уведомления.

ФОТОГРАФИИ

Aft



Flybridge Controls



Flybridge Helm



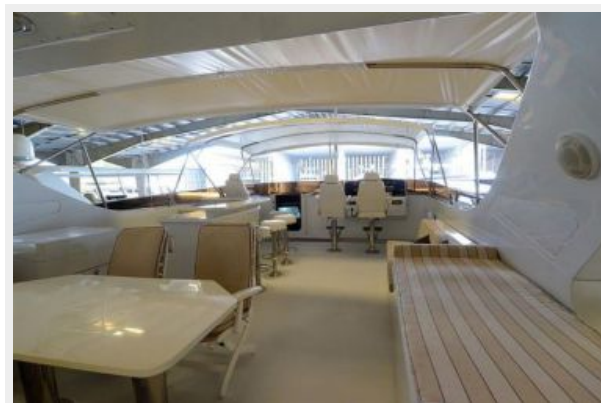
Flybridge



Flybridge



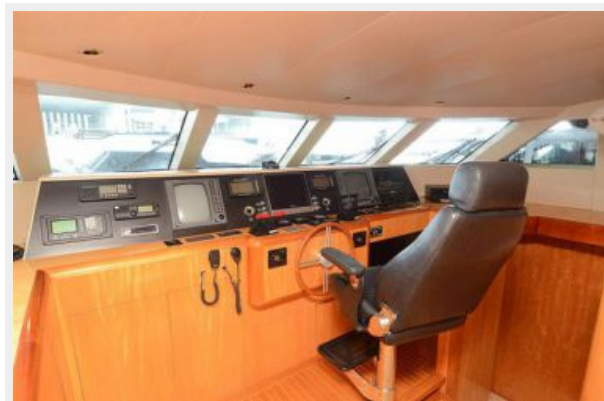
Flybridge Looking Forward



Aft Deck



Pilothouse



Controls



Salon



Salon Looking Aft



Dining



Galley



Galley



Day Head



Master Stateroom



Master Bathroom



Master Shower



VIP Stateroom



VIP Bathroom



Guest Stateroom



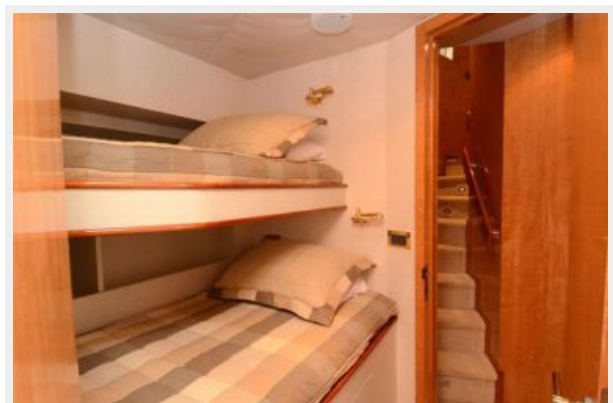
Guest Bathroom



Crew Quarters



Crew Quarters



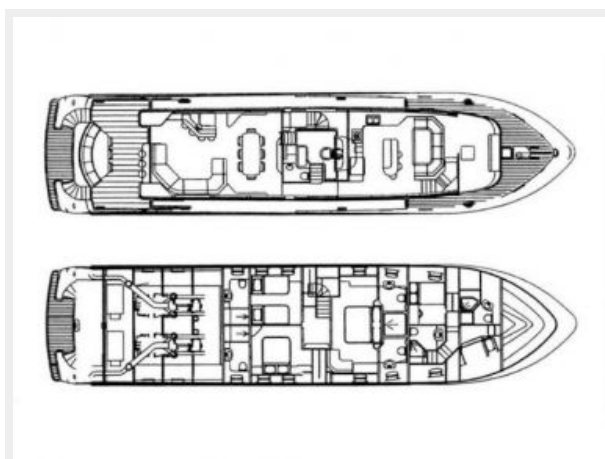
Crew Bathroom



Engine Room



GA Plans



КОНТАКТЫ

Андрей Шестаков (Andrey Shestakov) – ведущий яхтенный брокер отдела продаж яхт и судов компании Shestakov Yacht Sales Inc. Официальный представитель Shestakov Yacht Sales Inc. для русскоговорящих клиентов в центральном офисе компании в Майами/Форт Лодердейл/Флорида/США.

Контактная информация

Email: andrey@shestakovyachtsales.com

Web: shestakovyachtsales.com

Телефоны

Краснодарский край: **+7(918)465-66-44**

США, Майами, Флорида: **+1(954)274-4435**

Время работы

Понедельник – Суббота: **9:00 - 21:00**
EDT

Воскресенье: **Закрито**

Адрес



Harbour Towne Marina, 850 NE 3rd St,
STE 213, Dania, FL 33004