

SANDMAN — HENRIQUES



Builder: HENRIQUES

Year Built: 2001

Model: Sport Fisherman

Price: PRICE ON APPLICATION

Location: United States

LOA: 28' 0" (8.53m)

Beam: 10' 2" (3.10m)

Min Draft: 2' 11" (0.89m)

Cruise Speed: 22 Kts. (25 MPH)

Our experienced yacht broker, Andrey Shestakov, will help you choose and buy a yacht that best suits your needs **SANDMAN — HENRIQUES** from our catalogue. Presently, at Shestakov Yacht Sales Inc., we have a wide variety of yachts available on our sale's list. We also work in close contact with all the big yacht manufacturers from all over the world.

If you would like to buy a yacht **SANDMAN — HENRIQUES** or would like help answering any questions concerning purchasing, selling or chartering a yacht, please call **+1(954)274-4435**

TABLE OF CONTENTS

TABLE OF CONTENTS	2
SPECIFICATIONS	5
Overview	5
Basic Information	5
Dimensions	5
Speed, Capacities and Weight	5
Accommodations	5
Hull and Deck Information	6
Engine Information	6
DETAILED INFORMATION	7
Accommodations	7
Main Cabin	7
Head	7
Galley, Below Deck, Forward Port	7
Helm / Electronics and Navigation	7
Deck	8
Engine and Mechanical Equipment	8
Electrical System / Equipment	8
Cockpit / Fishing Equipment	9
Additional Features / Equipment	9
Exclusions	9
Salesman's Comments	9
Exclusions	9
Disclaimer	9
PHOTOS	10
Profile 2	10
Front Profile	10
Head	10

Main Cabin	10
Galley	11
Helm / Electronics & Navigation 1	11
Helm / Electronics & Navigation 2	11
Helm / Electronics & Navigation 3	11
Helm / Electronics & Navigation 4 - Tower Controls	12
Helm / Electronics & Navigation 5 - VHF Radio in Tower	12
Deck 1 - View From Tower Forward	12
Deck 2 - Tower Seating	12
Deck 3 - Hardtop Rod Storage	12
Deck 4 - Starboard Helm Seating	12
Deck 5 - Helm Storage	13
Deck 6 - Port Engine Seating	13
Engine & Mechanical Equipment 1 - Engine Room	13
Engine & Mechanical Equipment 2 - Port Engine	13
Engine & Mechanical Equipment 3 - Starboard	13
Engine & Mechanical Equipment 4 - Engine Room	13
Engine & Mechanical Equipment 5 - Engine Room	14
Engine & Mechanical Equipment 6 - Engine Room	14
Electrical System / Equipment - Distribution Panel	14
Cockpit / Fishing Equipment 1	14
Cockpit / Fishing Equipment 2 - Cockpit Storage	15
Cockpit / Fishing Equipment 3 - Live Well	15
Profile - Aft View	15
Cockpit / Fishing Equipment 4 - Tuna Door	15
CONTACTS	16
Contact details	16
Telephones	16
Office hours	16

Address

16

SPECIFICATIONS

Overview

Check out this very popular 28' Henriques! Her reliable 190 Yanmars will push this boat at 22 knots only burning 13 GPH! Great layout and nice electronics. Her owners plans have changed - **MAKE OFFERS!**

Basic Information

Category: Sport Fisherman

Sub Category: Express

Model Year: 2001

Year Built: 2001

Country: United States

Vessel Top: Hardtop W/Tower

Cockpit: Yes

Dimensions

LOA: 28' 0" (8.53m)

Beam: 10' 2" (3.10m)

Min Draft: 2' 11" (0.89m)

Speed, Capacities and Weight

Cruise Speed: 22 Kts. (25 MPH)

Displacement: 10500 Pounds

Fuel Capacity: 220 Gallons

Accommodations

Total Berths: 2

Sleeps: 2

Total Heads: 1

Hull and Deck Information

Hull Material: Fiberglass

Deck Material: Fiberglass

Hull Configuration: Modified V-Hull

Hull Color: White

Engine Information

Engines: 2

Manufacturer: Yanmar

Model: 4LHA DTE

Engine Type: Inboard

Fuel Type: Diesel

DETAILED INFORMATION

Accommodations

V-berth forward sleeps two owners and guests. One Head with shower. Step into the Cabin from the port side to find the Galley to port, enclosed Head to starboard and a large V-0berth with removable filler forward.

Main Cabin

- Table
- Closet
- Dinette
- Storage
- Cabinets
- Stereo system w/ CD player, speakers

Head

- Sink
- Exhaust fan
- Medicine cabinet
- Overboard, recirculating, electric head w/ holding tank

Galley, Below Deck, Forward Port

- Sink
- Refrigerator
- Water heater
- Microwave oven
- Pressure fresh water system

Helm / Electronics and Navigation

- Transducer
- Furuno 24nm radar
- Garmin 740S GPS / Plotter
- Furuno FCV-582L fish finder
- Raymarine ST 6002 auto pilot
- Icom 502 VHF radio (primary)

- Furuno VHF radio - Tower (secondary)

Deck

- EPIRB
- Helm seat
- Bow pulpit
- Marlin Tower
- Bridge curtain
- Transom door
- Boarding ladder
- Navigation lights
- Electric windlass
- Coaming padding
- Anchor w/ 150' lines
- Fresh water, salt water, pressure Deck wash down system

Engine and Mechanical Equipment

- Trim tabs
- Fuel filters
- Oil pressure alarm
- Oil transfer system
- Fire control system
- Fresh water cooling
- CO2 fire extinguisher
- Engine fuel shut-off valve
- Hydraulic, wheel steering
- Engine temperature alarm
- Thermal, acoustical insulation
- Bridge, Tower engine controls
- (3) Automatic, manual bilge pumps
- Twin 190 hp. Diesel I/B 2001 Yanmar 4LHA DTE's w/ 1325 hrs.

Electrical System / Equipment

- (4) Batteries
- Dockside cables
- Battery parallel switch
- 12v DC electrical system
- 110v AC electrical system

- Automatic battery charger

Cockpit / Fishing Equipment

- Fish box
- Outriggers
- Cockpit sink
- Live fish well
- Marlin Tower
- (8) Rod holders
- 6-rod Rocket launcher (Tower legs)

Additional Features / Equipment

- Yanmar Service is up to date

Exclusions

Owner's personal gear and items.

Salesman's Comments

Check out this very popular 28' Henriques! Her reliable 190 Yanmars will push this boat at 22 knots only burning 13 GPH! Great layout and nice electronics. Her owners plans have changed - **MAKE OFFERS!**

Exclusions

Owner's personal belongings.

Disclaimer

The Company offers the details of this vessel or yacht in good faith but cannot guarantee or warrant the accuracy of this information nor warrant the condition of the vessel. A buyer should instruct his representatives, agents, or his surveyors, to investigate such details as the buyer desires validated. This vessel or yacht is offered subject to prior sale, price change, or withdrawal without notice.

PHOTOS

Profile 2



Front Profile



Head



Main Cabin



Galley



Helm / Electronics & Navigation 1



Helm / Electronics & Navigation 2



Helm / Electronics & Navigation 3



Helm / Electronics & Navigation 4 - Tower Controls



Helm / Electronics & Navigation 5 - VHF Radio in Tower



Deck 1 - View From Tower Forward



Deck 2 - Tower Seating



Deck 3 - Hardtop Rod Storage



Deck 4 - Starboard Helm Seating



Deck 5 - Helm Storage



Deck 6 - Port Engine Seating



Engine & Mechanical Equipment 1 - Engine Room



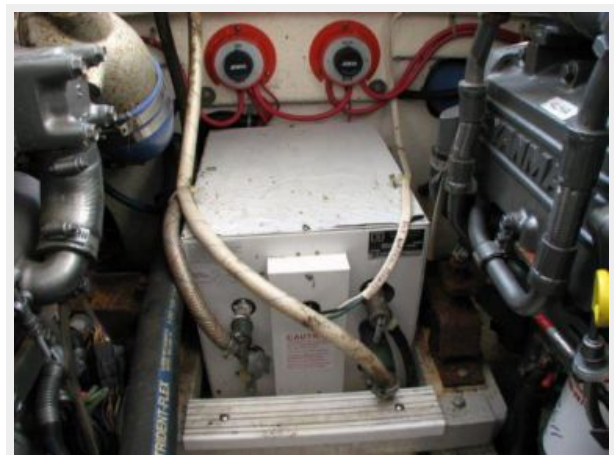
Engine & Mechanical Equipment 2 - Port Engine



Engine & Mechanical Equipment 3 - Starboard



Engine & Mechanical Equipment 4 - Engine Room



Engine & Mechanical Equipment 5 - Engine Room



Engine & Mechanical Equipment 6 - Engine Room



Electrical System / Equipment - Distribution Panel



Cockpit / Fishing Equipment 1



Cockpit / Fishing Equipment 2 - Cockpit Storage



Cockpit / Fishing Equipment 3 - Live Well



Profile - Aft View

Cockpit / Fishing Equipment 4 - Tuna Door



CONTACTS

Andrey Shestakov, leading yacht broker of the sales department of Shestakov Yacht Sales Inc. Shestakov Yacht Sales Inc., the official representative of the Miami/Fort Lauderdale FL headquarters.

Contact details

Email: andrey@shestakovyachtsales.com

Web: shestakovyachtsales.com/en/

Telephones

USA: +1(954)274-4435

Office hours

Monday – Saturday: **9:00 - 21:00** EDT

Sunday: **closed**

Address



Harbour Towne Marina, 850 NE 3rd St,
STE 213, Dania, FL 33004