

# LA BELLE ROCHELLE — CRUISERS YACHTS



**Builder:** [Cruisers Yachts](#)

**Year Built:** 2003

**Model:** Cruiser

**Price:** PRICE ON APPLICATION

**Location:** United States

**LOA:** 44' 0" (13.41m)

**Beam:** 14' 0" (4.27m)

**Min Draft:** 3' 6" (1.07m)

**Max Draft:** 3' 6" (1.07m)

Our experienced yacht broker, Andrey Shestakov, will help you choose and buy a yacht that best suits your needs **La Belle Rochelle — Cruisers Yachts** from our catalogue. Presently, at **Shestakov Yacht Sales Inc.**, we have a wide variety of yachts available on our sale's list. We also work in close contact with all the big yacht manufacturers from all over the world.

If you would like to buy a yacht **La Belle Rochelle — Cruisers Yachts** or would like help answering any questions concerning purchasing, selling or chartering a yacht, please call **+1(954)274-4435**

# TABLE OF CONTENTS

---

TABLE OF CONTENTS	2
SPECIFICATIONS	4
Overview	4
Basic Information	4
Dimensions	4
Speed, Capacities and Weight	5
Accommodations	5
Hull and Deck Information	5
Engine Information	5
DETAILED INFORMATION	6
Brokers Comments	6
Salon	6
Galley	7
Master Stateroom	7
Master Head	8
VIP Stateroom	8
Guest Head	9
Helm and Upper Cockpit	9
Navigation and Electronics	10
Cockpit	10
Engine and Mechanical	11
Electrical System	12
Hull and Deck	13
Disclaimer	13
Exclusions	13
Disclaimer	13
PHOTOS	14
Salon and Entry	14

---

Galley	14
Master Berth	14
Helm	14
Master Head and Vanity	15
Salon Dinette	15
Master Shower	15
Forward Berth	15
Forward Head	16
Helm Station	16
Washer and Dryer	16
Walk Thru Windshield	16
Foredeck	17
Windlass	17
Batteries	17
Generator	17
Batteries	18
Engine Room	18
Engine Room	18
Buttoned Up	18
<b>CONTACTS</b>	<b>19</b>
Contact details	19
Telephones	19
Office hours	19
Address	19

---

---

# SPECIFICATIONS

---

## Overview

---

This Cruisers 440 "La Belle Rochelle" is priced below market due to the owner's health considerations and does not reflect the exceptional care taken by the owner/captain. This unique Express by Cruisers Yachts features a full beam master stateroom aft with an island queen berth and a split head layout. The guest stateroom forward has a queen-size berth, privacy door and attached head. There is cherry wood cabinetry throughout and a huge salon couch/dinette with fully equipped galley opposite.

This vessel has a hardtop over her cockpit with enclosures and, like all Cruisers, she has a walk-through windshield for safe and easy access to the foredeck. The cockpit layout is huge and features a U-shaped lounge aft and curved companion seat lounge. The cockpit also features a wet bar with an icemaker/refrigerator combo. A complete electronics package includes radar, GPS/chart plotter and autopilot. The 440 Yanmar diesels provide reliable and efficient performance. She has fresh bottom paint and well maintained mechanical equipment. Complete in every way and ready to cruise!

## Basic Information

---

**Category:** Cruiser

**Sub Category:** Cabin Cruiser

**Model Year:** 2003

**Year Built:** 2003

**Country:** United States

**Vessel Top:** Hardtop

## Dimensions

---

**LOA:** 44' 0" (13.41m)

**Beam:** 14' 0" (4.27m)

**Min Draft:** 3' 6" (1.07m)

**Max Draft:** 3' 6" (1.07m)

---

## Speed, Capacities and Weight

---

**Displacement:** 24300 Pounds

**Water Capacity:** 100 Gallons

**Holding Tank:** 50 Gallons

**Fuel Capacity:** 400 Gallons

---

## Accommodations

---

**Total Cabins:** 2

**Total Berths:** 3

**Sleeps:** 5

**Total Heads:** 2

---

## Hull and Deck Information

---

**Hull Material:** Fiberglass

**Hull Configuration:** Modified Deep Vee

**Hull Color:** White

**Hull Designer:** Cruisers

---

## Engine Information

---

**Engines:** 2

**Manufacturer:** Yanmar

**Model:** 6LY2A-STP

**Engine Type:** Inboard

**Fuel Type:** Diesel

---

# DETAILED INFORMATION

---

## Brokers Comments

---

This Cruisers 440 "La Belle Rochelle" is priced below market due to the owner's health considerations and does not reflect the exceptional care taken by the owner/captain. This unique Express by Cruisers Yachts features a full beam master stateroom aft with an island queen berth and a split head layout. The guest stateroom forward has a queen-size berth, privacy door and attached head. There is cherry wood cabinetry throughout and a huge salon couch/dinette with fully equipped galley opposite.

This vessel has a hardtop over her cockpit with enclosures and, like all Cruisers, she has a walk-through windshield for safe and easy access to the foredeck. The cockpit layout is huge and features a U-shaped lounge aft and curved companion seat lounge. The cockpit also features a wet bar with an icemaker/refrigerator combo. A complete electronics package includes radar, GPS/chart plotter and autopilot. The 440 Yanmar diesels provide reliable and efficient performance. She has fresh bottom paint and well maintained mechanical equipment. Complete in every way and ready to cruise!

## Salon

---

The salon is entered through a lockable sliding door, with a separate screen door, and carpeted entry steps with teak inserts. The salon/dinette is positioned to starboard and has nearly six and a half feet of headroom. The salon is spacious and airy with a large skylight in the center of the overhead and two portlights with curtains. The sofa will convert to a berth with available cushions to cover the tables.

Sliding Cabin Entry Door with Separate Screen Door

Entry Steps, Carpeted with Teak Inserts

Huge Curved Sofa with Ultraleather Upholstery, Convertible to Berth

Storage below Sofa Seats

Cherry Dinette Tables (2)

Cherry Wood Cabinetry

20" Flat Screen TV with DVD

AM/FM/CD 6-Disc Stereo System

Overhead Cabinets

Portlights, Opening

Curtains

Overhead Hatch, Opening

Carpet

6'6" Headroom

Central Vacuum System

---

## Galley

---

The galley offers all the amenities customary of much larger yachts and integrates nicely opposite the salon area. There is a solid surface countertop and a generous amount of stowage.

Refrigerator, Full Size

Separate Freezer

Stove, Electric, Two Burners

Microwave/Convection Oven

Toaster Oven, Built-in

Stainless Steel Sink with Cover

Cherry Wood Cabinetry

Abundant Cabinet Storage

Portlight, Opening

Flooring, Teak and Holly

Dockside and Pressure Water System

---

## Master Stateroom

---

The **full beam** master cabin is aft of the main salon, amidships, through a full size door along the port side. **An en-suite head and separate shower** is located in the cabin; there is a vanity with a sink just outside the head compartment.

Queen Size Island Berth

---

Innerspring Mattress

Decorator Spread, Shams and Pillows

Portlights, Opening, Port and Starboard

Reading Lights

Flat Screen TV

DVD Player

Washer/Dryer Combo

Air Conditioning Control

Cherry Wood Cabinetry

Carpet

Privacy Door

Ensuite Private Head and Separate Shower

---

## Master Head

---

Split head design inside the master stateroom puts the toilet and the shower stall in separate compartments with vanity in between.

Separate Shower Stall with Seat

Toilet, VacuFlush

Vanity with Sink

Overhead Cabinet, Mirrored

Macerator System

Storage Above And Below

---

## VIP Stateroom

---

The guest stateroom is forward and features a large berth with an overhead hatch for plenty of natural light as well as emergency egress. There is a hanging locker to port and to starboard with a built in TV and DVD player. This stateroom has a private head with a fully enclosed stand up shower stall.



Queen-Size Berth

Innerspring Mattress

Portlights, Opening (2)

Reading Lights

Flat Screen TV

DVD Player

Hanging Lockers (2)

Cabinets, Over and Under

Overhead Hatch, Opening

Air Conditioning Control

Cherry Wood Cabinetry

Privacy Door

Ensuite Head

---

## Guest Head

---

The guest head has a stall shower and is located inside the VIP stateroom

Toilet, VacuFlush

Separate Stall Shower

Vanity with Sink

Overhead Cabinet, Mirrored

Portlight, Opening

Storage Above And Below

---

## Helm and Upper Cockpit

---

This area is covered by a hard top with sky lights and opening vents. Cruisers offers convenient access to the foredeck through an opening in the windshield. The upper cockpit layout offers the helm station to starboard with a companion lounge to port. Modern and ergonomically outfitted,

---

the helm offers convenient access to electronics and controls and great visibility. The electronics package is a complete ensemble.

Yanmar Engine Controls

Full Instrumentation and Electronics

Helm Seat, Adjustable w/Pop-up Bolster and Arm Rests

Companion Lounge to Port

Tilt Steering Wheel

Keyless Ignition System

Glendinning Synchronizer

Bennett Trim Tab Indicator

Rule High Water Alarm

Controls for Windlass, Spotlight and Trim Tabs

Stereo Controls

Built in Step for **Walk through Windshield** Foredeck Access

## Navigation and Electronics

---

GPS/Plotter, Northstar 958

GPS Navigator, Garmin 640

Radar, Furuno 32 mile Open Array

Autopilot, Simrad AP 20

Digital Depth Sounder, Lowrance 3500

VHF Radio, Icom IC M 602

Compass

Dual Horns

## Cockpit

---

While the helm station and companion lounge occupy the upper cockpit, the lower cockpit offers a huge amount of seating and entertainment area. Entering the cockpit from her integral swim platform, there is a large U-shaped seating area to port and entertainment center to starboard. There are full enclosures plus a cockpit cover for long term stowage.

Hardtop W/Skylight and Opening Hatches (2)

Front Enclosure with Isinglass and Black Trim, Stored

Windshield and Windshield Wipers

Windshield Opens, for Foredeck Access

Full Aft Enclosure with Isinglass and Black Trim, Stored

U-Shaped Seating Aft w/Storage Under

Table Converts to Sun Bed, Removable

Wet Bar Console with Corian Inserts

Ice Maker/Refrigerator Combo

Ample Lighting, Stereo Speakers and Drink Holders

Powered Hatch for Engine Room Access

Access Hatch to Engine Room for Quick Inspection

Carpet, Stored

Full Cockpit Cover

Transom Door

Hot and Cold Transom Shower

Trunk Storage in Transom

Extended Integral Swim Platform

Folding Swim Ladder with Cover

Deck Boxes in Swim Platform

---

## Engine and Mechanical

---

Access to the engine room is gained through a quick check hatch plus full access with a large

section of the cockpit raised by electric rams. The engine room is well laid out and the batteries are readily accessible for routine maintenance. Both engines have been rebuilt by the certified manufacturer rep. The generator is situated within this space and is protected by a sound shield for quiet operation.

Twin Yanmar 440 Diesels - Port 60 Hrs SMOH, Starboard 395 Hrs SMOH

Powered Engine Hatch plus Day Hatch

Fire Suppression System

Sea Water Strainers

Dripless Shaft Seals

Oil Exchange System

Racor Filters

Bilge pumps (3) 2200 gph

Reverse Cycle Air Conditioning Units (2)

Waste Pumpout w/Macerator

Hot Water Heater

Engine Room Lights

## **Electrical System**

---

120/240 Volt AC System

12 Volt DC System

Glendinning Cablemaster, 50 Amp Service

Generator, 9.0 KW Onan W/Sound Shield, 1660 Hours

Distribution Panel

Batteries, New 2013

Battery Condition Gauge

Water and Waste Gauges

Cable and Phone Connections

---

## Hull and Deck

---

A foredeck locker covers the windlass plus space for two fenders. **The bottom was painted in August 2014 and is cleaned monthly.**

Windlass, Electric with Foot Pads and Remote

Anchor w/ 50' of Chain and 250' of Rode

Spotlight

Burgee Staff

Railings and Handrails, Stainless Steel

Non-Skid Deck

Foredeck Sun Pad, Stored

Walk through Windshield

Weaver Davit's and Arms, Stored

---

## Disclaimer

---

The Company offers the details of this vessel in good faith but cannot guarantee or warrant the accuracy of this information nor warrant the condition of the vessel. A buyer should instruct his agents, or his surveyors, to investigate such details as the buyer desires validated. This vessel is offered subject to prior sale, price change, or withdrawal without notice.

---

## Exclusions

---

Owner's personal belongings.

---

## Disclaimer

---

The Company offers the details of this vessel or yacht in good faith but cannot guarantee or warrant the accuracy of this information nor warrant the condition of the vessel. A buyer should instruct his representatives, agents, or his surveyors, to investigate such details as the buyer desires validated. This vessel or yacht is offered subject to prior sale, price change, or withdrawal without notice.

# PHOTOS

**Salon and Entry**



**Galley**



**Master Berth**



**Helm**



**Salon Dinette**



**Master Head and Vanity**



**Master Shower**



**Forward Berth**



**Forward Head**



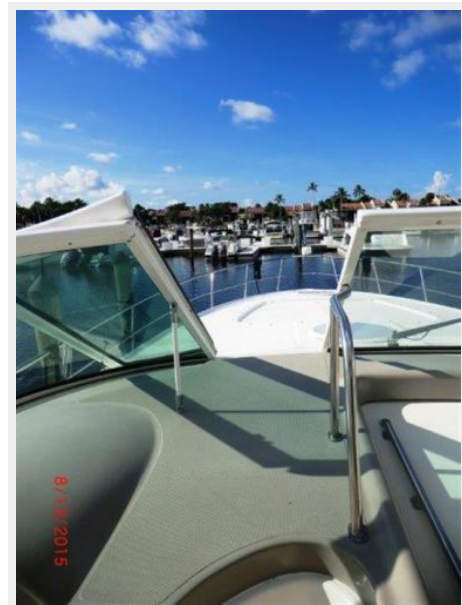
**Helm Station**



**Washer and Dryer**



**Walk Thru Windshield**





**Foredeck**



**Windlass**



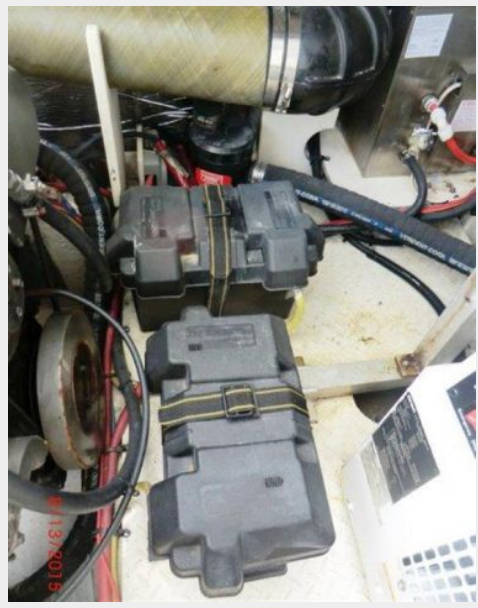
**Generator**



**Batteries**



### Batteries



### Engine Room



### Engine Room



### Buttoned Up



# CONTACTS

---

Andrey Shestakov, leading yacht broker of the sales department of Shestakov Yacht Sales Inc. Shestakov Yacht Sales Inc., the official representative of the Miami/Fort Lauderdale FL headquarters.

## Contact details

---

Email: [andrey@shestakovyachtsales.com](mailto:andrey@shestakovyachtsales.com)

Web: [shestakovyachtsales.com/en/](http://shestakovyachtsales.com/en/)

## Telephones

---

USA: +1(954)274-4435

## Office hours

---

Monday – Saturday: **9:00 - 21:00** EDT

Sunday: **closed**

## Address

---



Harbour Towne Marina, 850 NE 3rd St,  
STE 213, Dania, FL 33004