

CHAPTER TWO — TIARA



Builder: TIARA

Year Built: 2012

Model: Cruiser

Price: PRICE ON APPLICATION

Location: United States

LOA: 58' 0" (17.68m)

Beam: 15' 10" (4.83m)

Max Draft: 3' 6" (1.07m)

Cruise Speed: 26 Kts. (30 MPH)

Max Speed: 33 Kts. (38 MPH)

Our experienced yacht broker, Andrey Shestakov, will help you choose and buy a yacht that best suits your needs **Chapter Two — TIARA** from our catalogue. Presently, at Shestakov Yacht Sales Inc., we have a wide variety of yachts available on our sale's list. We also work in close contact with all the big yacht manufacturers from all over the world.

If you would like to buy a yacht **Chapter Two — TIARA** or would like help answering any questions concerning purchasing, selling or chartering a yacht, please call **+1(954)274-4435**

TABLE OF CONTENTS

TABLE OF CONTENTS	2
SPECIFICATIONS	6
Overview	6
Basic Information	8
Dimensions	8
Speed, Capacities and Weight	8
Accommodations	8
Hull and Deck Information	8
Engine Information	9
DETAILED INFORMATION	10
Remarks	10
Hull & Deck	11
Transom Area	12
Aft Deck	12
Interior Group	13
Sky Galley	13
Salon & Helm Area	14
Upper Level Salon	15
Mid-Level	15
Lower Level	15
Dinette/Lower Salon	15
Master Stateroom	15
Master Head	16
VIP Stateroom	16
VIP/Day Head	16
Instrumentation, Safety, & Equipment	17
Color Sections	17
Performance Data (Engine Room)	18

Exclusions	18
Exclusions	18
Disclaimer	18
PHOTOS	19
Salon	19
Salon	19
Salon	19
Salon Seating	19
Salon Seating	19
TV Storage	19
Table Top	20
Dinette	20
Dinette	20
Dinette TV	20
Galley	20
Galley	20
Teak Sole	21
Sub Zeros	21
Master Stateroom	21
Master Stateroom	21
Master Stateroom	21
Master Seating	21
Master Stereo	22
Master Vanity	22
Master Vanity	22
Master Head	22
VIP Stateroom	22
VIP Stateroom	22
VIP Stateroom	23

VIP Stateroom	23
VIP TV	23
VIP Head	23
VIP Head	23
Laundry	23
Sun Roof	24
Helm	24
Helm	24
Helm	24
Electronics	24
Electronics	24
GPS	25
Joystick & Throttles	25
Ship Monitor	25
Helm Seating	25
Helm Refrigerator	25
Wine Rack	25
Cockpit	26
Cockpit	26
Cockpit Refrigerator	26
Cockpit Icemaker	26
Engine Room	26
Generator	26
Raycors & Battery Charger	27
Spare Props	27
Water Maker	27
Transom	27
Swim Platform	27
Running Profile	27

Starboard Profile	28
Running Profile	28
Starboard Profile	28
Starboard Bow	28
Transom Profile	28
Starboard Bow	28
Freedom Lift	29
Freedom Lift	29
CONTACTS	30
Contact details	30
Telephones	30
Office hours	30
Address	30

SPECIFICATIONS

Overview

"Chapter Two" is a stand out model of Tiaras' flagship, the 5800 Sovran, and she was ordered by the owner with all of the most desired options including many upgrades including, but not limited to, DPS, (Digital Positioning system), Freedom Lift for the Tender or Jet-ski, and Volvo Extended Warranties on Engines until September 2017. A complete list of upgrades is below. The Sovran 58 features triple Volvo Penta IPS drives and standard joystick controls, (2), for incredible ease of docking. "Chapter Two" features luxurious tri-level living quarters, glassed upper level salon and dual curved glass entry doors: mid-level sky galley; and lower dinette which can be converted to a third bed, and beautiful full beam master stateroom, master head; guest VIP stateroom and large VIP/day head with shower. This yacht is well maintained and the original owners take pride in keeping the vessel in excellent condition and running shape, performing all required service at proper intervals, and is regularly cleaned, detailed and waxed by a yacht management company. In addition to the impressive factory options, here is a list of upgrades:

(Note: Tender shown in picture not included in sale of vessel)

OUTSTANDING FEATURES:

Freedom lift for Tender or PWC (Tender shown in picture not included in sale of vessel)

Spare set of props

Water Maker - Sea Recovery Aquamatic, 700 GPD with remote operation touchpad

6 man Revere Life Raft Mounted in Cradle on Hard Top, Hydrostatically Activated including EPIRB. Inspected April 2014

Volvo ACP, - Active Corrosion Protection

Digital Positioning System, (Allows vessel to remain in one spot for ease of use at fuel dock or locks)

Window Tint on all windows which cuts down on glare by 70%

Black Mesh Windshield cover

Marquipt transition platform, (step across). Can be used on either port or starboard side of cockpit.

Custom Release marine salon table

KVH HD7 Satellite Receiver

Deka 34M AGM Batteries

Isotherm Refrigerator/Freezer in Cellar

Wireless Rode Counter for Anchor Windlass

Underwater Lights

Sisal Carpet in Cockpit

Two A/C Pumps for redundancy

Two Water Pumps for redundancy

Line Cutters on Props

Additional water tap and hose in engine room

Aft joystick for docking in portside cockpit cabinet above cockpit refrigerator

Two STIDD Captain's Chairs with Power Vertical and 8" for /aft adjustment

Hidden ship safe

Dishwasher

Garbage Disposal

Salon Beverage Cooler

Starboard Aft Deck Wet Bar and Ice Maker

Portside Aft Deck Refrigerator

Macerator System for Heads

Large dinette table in lower salon with filler cushion insert to convert to bed

Additional 120 Volt cockpit receptacle mounted under cockpit seating

ACR Remote Spotlight

Garmin 7215 Touchscreens with Sirius/XM Marine Weather. (Subscription good until March 2018)

Dirt Devil Central Vacuum System

Sub-Zero Refrigerator/Freezer Drawers

Custom Teak Hardwood Floor

Separate Washer/Dryer

Basic Information

Category: Cruiser

Sub Category: Express

Model Year: 2012

Year Built: 2012

Country: United States

Vessel Top: Hardtop

Cockpit: Yes

Dimensions

LOA: 58' 0" (17.68m)

Beam: 15' 10" (4.83m)

Max Draft: 3' 6" (1.07m)

Clearance: 13' 9" (4.19m)

Speed, Capacities and Weight

Cruise Speed: 26 Kts. (30 MPH)

Max Speed: 33 Kts. (38 MPH)

Displacement: 43500 Pounds

Water Capacity: 200 Gallons

Holding Tank: 86 Gallons

Fuel Capacity: 650 Gallons

Accommodations

Total Cabins: 2

Total Heads: 2

Hull and Deck Information

Hull Material: Fiberglass

Hull Color: White

Engine Information

Engines: 3

Manufacturer: Volvo

Model: IPS 600

Engine Type: Inboard

Fuel Type: Diesel

DETAILED INFORMATION

Remarks

"Chapter Two" is a stand out model of Tiaras' flagship, the 5800 Sovran, and she was ordered by the owner with all of the most desired options including many upgrades including, but not limited to, DPS, (Digital Positioning system), Freedom Lift for the Tender or Jet-ski, and Volvo Extended Warranties on Engine until September 2017. A complete list of upgrades is below. The Sovran 58 features triple Volvo Penta IPS drives and standard joystick controls, (2), for incredible ease of docking. "Chapter Two" features luxurious tri-level living quarters, glassed upper level salon and dual curved glass entry doors: mid-level sky galley; and lower dinette which can be converted to a third bed, and beautiful full beam master stateroom, master head; guest VIP stateroom and large VIP/day head with shower. This yacht is well maintained and the original owners takes pride in keeping the vessel in excellent condition and running shape, performing all required service at proper intervals, and is regularly cleaned, detailed and waxed by a yacht management company. In addition to the impressive factory options, here is a list of upgrades:

(Note: Tender shown in picture not included in sale of vessel)

OUTSTANDING FEATURES:

Spare set of props

Water Maker - Sea Recovery Aquamatic, 700 GPD with remote operation touchpad in Salon/Cockpit.

6 man Revere Life Raft Mounted in Cradle on Hard Top, Hysdrostatically Activated including EPIRB.

Volvo ACP, - Digital Positioning System, (Allows vessel to remain in one spot for ease of use at fuel dock or locks)

Window Tint on all windows which cuts down on glare by 70%

Black Mesh Windshield cover

Marquipt transition platform, (step across). Can be used on either port or starboard side of cockpit.

Custom Release marine salon table

KVH HD7 Satellite Receiver

Deka 34M AGM Batteries

Isotherm Refrigerator/Freezer in Cellar

Wireless Rode Counter for Anchor Windlass

Underwater Lights

Sisal Carpet in Cockpit

Two A/C Pumps for redundancy

Two Water Pumps for redundancy

Line Cutters on Props

Additional water tap and hose in engine room

Aft joystick for docking in portside cockpit cabinet above cockpit refrigerator

Two STIDD Captain's Chairs with Automated Vertical and 8" for /aft adjustment

Hidden ship safe

Dishwasher

Garbage Disposal

Starboard Aft Deck Web Bar and Ice Maker

Portside Aft Deck Refrigerator

Large dinette table in lower salon with filler cushion insert to convert to bed

Additional 120 Volt cockpit receptacle mounted under cockpit seating

ACR Remote Spotlight

Garmin 7215 Touchscreens with Sirius/XM Marine Weather. (Subscription good until March 2018)

Dirt Devil Central Vacuum System

Sub-Zero Refrigerator/Freezer Drawers

Custom Teak Hardwood Floor

Separate Washer/Dryer

Hull & Deck

- Custom diamond pattern non-skid deck & cockpit surfaces
- Anti-fouling black bottom paint

- (3) Composite forward deck hatches with adjusters & built-in Ocean Air screens & privacy covers
- Molded-in fiberglass bow pulpit, with stainless steel roller system
- One-piece welded, 316L stainless steel bow rail with pulpit – Tiara burgee and staff
- Bootline color: Platinum
- Bronze seacocks on all underwater thru-hull fittings
- Molded-in, recessed portlights, three (3) starboard and (2) port, with molded-in hullside windows in the master stateroom
- QL Marine transom mounted trim tabs
- Freshwater and raw washdown outlets in the anchor locker with coiled hose
- Stainless steel rubrail
- Deck constructed with a gelcoat outer layer, hand laid fiberglass and balsa core with vinylester resin
- Transom and deck side engine air intake system
- Concealed automatic rope/chain and anchor windlass system with operation from foredeck foot pedal and remote switch at helm
- Cupholder – 6 hole in teak cockpit table custom made by Release Marine
- Marquipt transition platform (step across)
- 120V outlet – front side aft lounge
- Tiara custom composite hardtop & windshield frame with tempered safety glass, safety handrails, intermittent washer/wipers. Hardtop included electric carbon fiber sun roof
- Electronics arch
- Black Mesh Windshield cover
- Forward deck sun pad

Transom Area

- Single transom (starboard side) tempered glass entry door with teak wood frame and stainless steel hardware - door opens inboard with safety catch
- Transom entry stainless steel grab rail with cleats below
- 60" Integrated swim platform with recessed handrail and slide out 46" stainless steel swim ladder
- Transom storage compartment with fiberglass liner and hydraulically actuated fiberglass hatch
- (2) Transom pop-up cleats
- Recessed transom shower (hot and cold water)
- Freshwater washdown outlet with stainless steel fittings and 25' coiled blue hose
- Raw water washdown outlet with stainless steel fittings and 25' coiled yellow hose
- Freedom Lift XT
- IMTR underwater lights

Aft Deck

- Sisal seagrass cockpit carpet

- Starboard Aft deck wet bar ice maker
- Port Aft deck glove box with refrigerator
- Joystick control port glove box storage
- Aft curtain three piece – Stamoid/white
- Insulated engine room with actuated day hatch
- Molded-in forward facing lounge with storage
- High-gloss teak cockpit table with hi-lo actuator – Includes weather cover for table
- Molded-in steps to deck walkway & swim platform – Safety handrails above deck walkway steps
- Cockpit LED courtesy lighting with remote control
- Port storage unit with quartz accent, covered glove box storage, and storage below
- Starboard wet bar with sink, quartz, accent, & storage below
- Satellite radio-ready Clarion stereo (located in salon) with MP3/iPod USB port. Two (2) JL Audio component speakers, (1) JL Audio 10" subwoofer, one (1) JL Audio amp, & remote control touchpad for Clarion stereo are all located in cockpit
- 120V GFI outlet in glove box port
- 12V outlet in glove box port
- Weather covers for cockpit furniture
- 120V outlet under rear seat
- Lights under overhang red, white, and blue

Interior Group

- Teak interior
- Teak hardwood floor
- Three (3) telephone outlets
- 120V outlets throughout
- 12V lighting throughout
- Grain-filled teak interior
- Three (3) telephone outlets - one master stateroom, one salon, & one VIP stateroom
- 120V outlets throughout
- 12V lighting throughout & additional 120V lighting in salon
- Dirt Devil central vacuum system. Includes deluxe cleaning kit, 7' hose expandable to 30', and VacPan automatic dust pan along floor. Hose outlet located in galley cabinet.
- Tiara bath towels - two (2) sets, cream
- Tiara custom bedding - one (1) white sheet set for master stateroom, one (1) white sheet set for VIP stateroom, & one (1) mattress pad each for master & VIP staterooms

Sky Galley

- Large Portside Sky Galley Features Quartz Countertops
- Three-Burner Electric Cooktop with Tile Backsplash

- Microwave/Convection Oven
- Stainless Steel Undermount Sinks
- Sub-Zero Refrigerator/Freezer Drawers
- Below Counter Storage Cabinets and Drawers
- Dish Lockers
- Large Cellar Pantry with Lift Entry Under the Galley Floor
- Isotherm refrigerator/freezer in cellar pantry
- Dishwasher and Garbage Disposal
- Coffee maker (Mr. Coffee) with Thermos Carafe

Salon & Helm Area

- Stainless steel aft sliding doors with window coverings
- Blinds for port & starboard salon windows
- Starboard L-lounge with seating for five (5)
- Two (2) club chairs, port
- Entertainment center – Includes storage & 32" LCD TV mounted on a hi-lo actuator to conceal the TV when not in use
- Denon AM/FM stereo system with DVD player, five (5) Polk Audio speakers, Polk Audio subwoofer & iPod docking station. DVD/satellite TV wiring run from Denon receiver to helm as standard & wired to optional Raymarine G Series electronics display
- Marine Air Systems 36,000 BTU salon air conditioning system, controls in the lower salon
- Helm with full instrumentation and Tiara Command Station touchscreen control, flush mount electronics capability, drink holders, 12V and 120V outlets, & 17.5" leather-wrapped steering wheel
- Electric opening starboard side window at helm
- Marine Air Systems 12,000 BTU helm air conditioning system with discharge in galley – Controls on the helm console
- Sky galley below to port
- Elegant & beautiful solid teak tongue and groove flooring
- Release Marine - Custom Teak Hi-Lo Salon Table with leaves
- Aqua Marine window tint 70% for salon
- Tiara custom composite hardtop and windshield frame with tempered safety glass, safety handrails, and 3 custom washer/wipers
- Black Mesh windshield cover lieu canvas
- Hardtop includes an electric fiberglass sunroof, accent lighting, and concealed a/c discharge and speakers
- Entertainment center – includes storage and a Majestic LCD TV mounted on a hi-lo actuator to conceal TV when not in use
- 120V Vitrifrigo refrigerator/freezer combination
- Larger dinette table
- Two STIDD Captain's Chairs with automatic vertical 8" fore/aft adjustment
- Sharp 26" LCD Flat screen TV

- Beverage cooler
- White trim rings in lieu of silver

Upper Level Salon

- A free-flowing living, socializing, entertaining room distinguished by abundant natural light
- Ample Seating
- Large L-Sofa/Lounge
- One Club Chair, Port
- 40" Flat Screen LCD TV Mounted on Hi-Lo Actuator
- Denon AM/FM Stereo System with DVD Player and iPod Docking Station
- Drawer-style Refrigerator/Freezer and Storage
- Teak Hardwood Floor

Mid-Level

Sky galley is conveniently located between two gathering places – the UPPER LEVEL main salon and the LOWER LEVEL dinette/salon

Lower Level

Sleeping quarters are large, quiet and private • private access to adjoining heads

Dinette/Lower Salon

- Larger dinette table in lower salon with filler cushion insert to convert to bed
- Sharp 26" Flat Screen LCD TV
- Starboard U-shaped dinette with storage below (seating for four (4) high gloss teak table converts with short pedestal for sleeping)
- Upper cabinet storage
- Entry to VIP/Day Head
- Privacy shade for port light
- (2) Polk audio speakers for salon Denon stereo system
- Marine Air Systems – 18,000 BTU air conditioning system for dinette and VIP Day Head, controls, & galley

Master Stateroom

- Full-beam Master Stateroom
- Sofa

- Starboard desk with swivel seat
- Fully Carpeted
- Private Entrance from Master Foyer
- Over-sized Queen Berth with Innerspring Mattress
- Storage compartment below berth manually actuated with gas springs
- Upholstered Headboard
- Port/Starboard Dresser Drawers
- Cedar-backed Hanging Lockers - Port
- Pivot-Mounted 26" Flat Screen LCD TV & Integrated DVD System
- (3) Reading lights, independently switched
- Marine Air Systems 16,000 BTU air conditioning system for master stateroom, foyer, & master head - controls in master stateroom
- Large Hullside Windows
- Linen Closet with Stackable Washer/Dryer
- Private Entry to Master Head

Master Head

- Full frame door with private master stateroom entry
- Quartz Countertop with Porcelain Vessel Sink
- Lighted Mirrored Medicine Cabinets
- Lower Vanity Storage
- Ceramic Tile Floor
- Fiberglass stall shower with sump pump, glass shower door, & teak seat
- Macerator system for heads
- Privacy shade for portlight
- Vacuflush toilet

VIP Stateroom

- Queen Pedestal Berth (storage below) with Enhanced Innerspring Mattress
- Upholstered Headboard
- Teak Hardwood Floor
- Port and Starboard Upper Hullside Cabinets
- Starboard Hanging Locker
- 19" Flat Screen LCD TV and DVD Player
- Private Entry to the Guest/Day Head

VIP/Day Head

- Access from the Lower Salon and Private Access from VIP Stateroom

- Quartz Countertop with Porcelain Vessel Sink
- Lighted Mirrored Medicine Cabinet
- Lower Vanity Storage
- Ceramic Tile Floor
- Separate Fiberglass Stall Shower with Acrylic Door & Molded-in Fiberglass Seat

Instrumentation, Safety, & Equipment

- Garmin Dual 7215 GPS map
- Depth Finder
- GPS
- Radar HD - 48 miles
- Garmin GHC 10 (Auto Pilot)
- Garmin GHS 10 VHF (300 AIS Systems) which identifies oncoming vessels
- ACR remote controlled spotlight
- XM Weather
- KVHD 7 Trac Vision Satellite TV Antenna
- Tiara custom 12V DC and 120V AC electrical system with master distribution panels in salon
- Tiara B260 1KW Transducer
- Cable TV and phone inlets and outlets with 65' dockside cord
- TV and AM/FM radio antennas
- Onan 17kw diesel generator with sound shield and helm indicator
- (2) Vietron battery chargers – 100 amp
- High capacity alternators (2) engine driven
- Volvo Penta electronic engine controls and steering system
- Ritchie globemaster compass
- Oil changing system, main engines and generator
- Raw water intake strainers
- Fresh water pressure system
- Two (2) water heaters – 20 gallons each
- (3) Carbon monoxide detectors, (4) handheld fire extinguishers, and (3) smoke detectors
- Steering wheel 17.5" Leather-Wrapped

Color Sections

- Hull Color – White
- Hull Bottom Color – White
- Interior Fabric – Tuscany
- Salon, Galley, and Head Quartz Countertops: Royal Gold Quartz
- Helm Accent and Helm Chairs: French Vanilla
- Carpet Flooring - Muslin
- Tile Flooring - Egyptian Beige

Performance Data (Engine Room)

- Triple Volvo IPS 600 Diesels (435 HP each)
- Deka 34M AGM batteries lieu standard
- Thru-hull water and wiring for Water Maker
- Water Maker
- Spare parts kit for three (3) engines
- Oil change system
- Volvo ACP (Active Corrosion Protection System)

Exclusions

Owner's personal property. Note: Tender shown in picture not included in sale of vessel.

Exclusions

Owner's personal belongings.

Disclaimer

The Company offers the details of this vessel or yacht in good faith but cannot guarantee or warrant the accuracy of this information nor warrant the condition of the vessel. A buyer should instruct his representatives, agents, or his surveyors, to investigate such details as the buyer desires validated. This vessel or yacht is offered subject to prior sale, price change, or withdrawal without notice.

PHOTOS

Salon



Salon



Salon



Salon Seating



Salon Seating



TV Storage

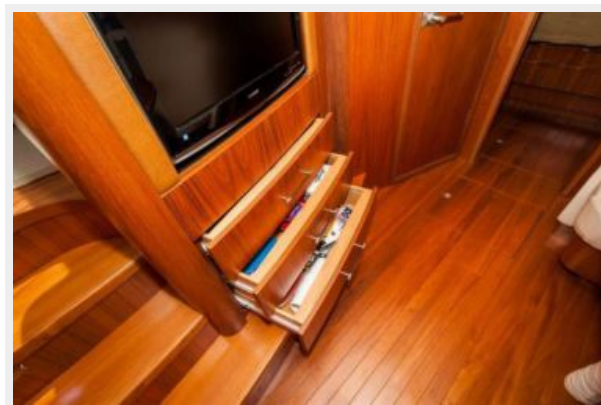


Table Top



Dinette



Dinette



Dinette TV



Galley



Galley



Teak Sole



Sub Zeros



Master Stateroom



Master Stateroom



Master Stateroom



Master Seating



Master Stereo



Master Vanity



Master Vanity



Master Head



VIP Stateroom



VIP Stateroom



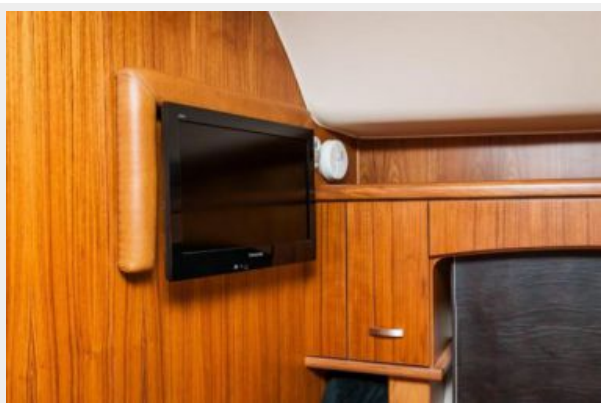
VIP Stateroom



VIP Stateroom



VIP TV



VIP Head



VIP Head



Laundry



Sun Roof



Helm



Helm



Helm



Electronics



Electronics



GPS



Joystick & Throttles



Ship Monitor



Helm Seating



Helm Refrigerator



Wine Rack



Cockpit



Cockpit



Cockpit Refrigerator



Cockpit Icemaker



Engine Room



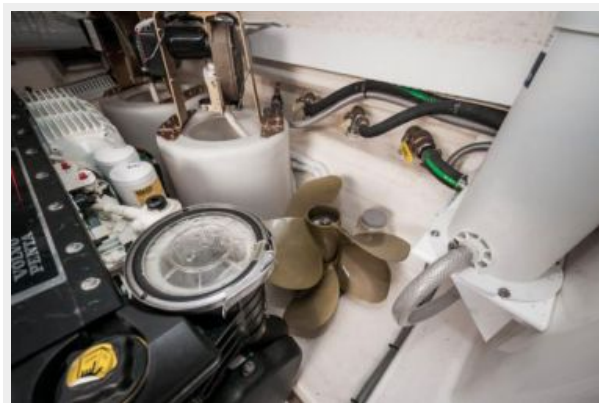
Generator



Raycors & Battery Charger



Spare Props



Water Maker



Transom



Swim Platform



Running Profile



Running Profile



Starboard Profile



Starboard Profile



Starboard Bow



Starboard Bow



Transom Profile



Freedom Lift



Freedom Lift



CONTACTS

Andrey Shestakov, leading yacht broker of the sales department of Shestakov Yacht Sales Inc. Shestakov Yacht Sales Inc., the official representative of the Miami/Fort Lauderdale FL headquarters.

Contact details

Email: **andrey@shestakovyachtsales.com**

Web: shestakovyachtsales.com/en/

Telephones

USA: **+1(954)274-4435**

Office hours

Monday – Saturday: **9:00 - 21:00 EDT**

Sunday: **closed**

Address



Harbour Towne Marina, 850 NE 3rd St,
STE 213, Dania, FL 33004