

AMADEUS — AZIMUT



Builder: AZIMUT

Year Built: 2004

Model: Motor Yacht

Price: PRICE ON APPLICATION

Location: Mexico

LOA: 48' 11" (14.91m)

Beam: 14' 3" (4.34m)

Cruise Speed: 27 Kts. (31 MPH)

Max Speed: 21 Kts. (24 MPH)

Our experienced yacht broker, Andrey Shestakov, will help you choose and buy a yacht that best suits your needs **AMADEUS — AZIMUT** from our catalogue. Presently, at Shestakov Yacht Sales Inc., we have a wide variety of yachts available on our sale's list. We also work in close contact with all the big yacht manufacturers from all over the world.

If you would like to buy a yacht **AMADEUS — AZIMUT** or would like help answering any questions concerning purchasing, selling or chartering a yacht, please call **+1(954)274-4435**

TABLE OF CONTENTS

TABLE OF CONTENTS	2
SPECIFICATIONS	3
Overview	3
Basic Information	3
Dimensions	3
Speed, Capacities and Weight	3
Accommodations	3
Hull and Deck Information	4
Engine Information	4
DETAILED INFORMATION	5
Manufacturer Provided Description	5
Accommodations	5
Electronics	6
Generador	6
Exclusions	6
Disclaimer	6
PHOTOS	7
CONTACTS	12
Contact details	12
Telephones	12
Office hours	12
Address	12

SPECIFICATIONS

Overview

2004 AZIMUT 46 Fly @ Acapulco, Guerrero

Generador: Marca Kohler 3,754 Horas

Basic Information

Category: Motor Yacht

Sub Category: Flybridge

Model Year: 2004

Year Built: 2004

Country: Mexico

Vessel Top: Bimini Top

Fly Bridge: Yes

Cockpit: Yes

Dimensions

LOA: 48' 11" (14.91m)

Beam: 14' 3" (4.34m)

Speed, Capacities and Weight

Cruise Speed: 27 Kts. (31 MPH)

Max Speed: 21 Kts. (24 MPH)

Displacement: 16500 Pounds

Water Capacity: 132 Gallons

Holding Tank: 15 Gallons

Fuel Capacity: 396 Gallons

Accommodations

Total Cabins: 2

Total Berths: 2

Sleeps: 4

Total Heads: 2

Hull and Deck Information

Hull Material: GRP

Engine Information

Engines: 2

Manufacturer: Caterpillar

Model: C9

Engine Type: Inboard

Fuel Type: Diesel

DETAILED INFORMATION

Manufacturer Provided Description

The craft has been in production since 1996 and over 300 units have been built. Due to its tremendous success the boatyard, though busy with new models, decided to restyle and update both technically and aesthetically the craft bringing it in line with the other models currently under production. The most evident external modification has been the application of mirrored glass. The engine room has been completely redesigned to enable the positioning of two 500cv CAT C9 engines. Silent exhaust manifolds have been mounted and the fuel tank capacity has been increased to 1700litres.

Accommodations

Owner's Cabin

1 cama King size

1 baño con wc/lavabo/ regadera

1 TV 32´marca LG

VIP Cabin

1 cama King size

1 baño con wc /lavabo/regadera

GALLEY

Tarja

Parrilla Electrica con 3 quemadores

1 Horno de Microondas "EWAVE"

Salon

8 Bocinas pequeñas Bose

Pantalla Plana LG

Equalizador Clarion EQ5746

BluRay LG BP140

Electronics

PathFinder Raymarine RL70 PLUS

Autopilot Raymarine ST6001 PLUS

Tridata Raymarine ST60

Tracphone KVH

Generador

Marca Kohler 3,754 Horas

Exclusions

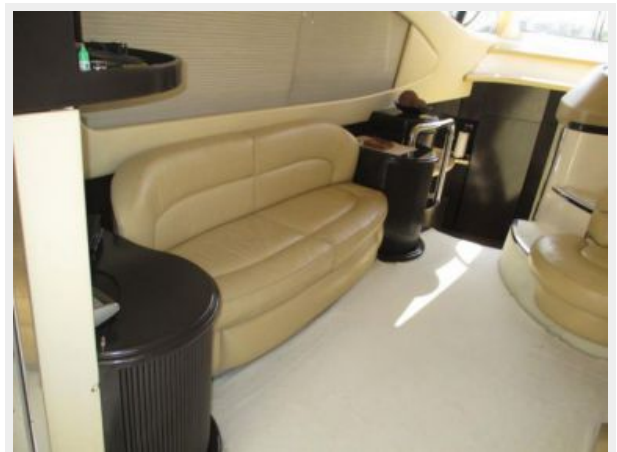
Owner's personal belongings.

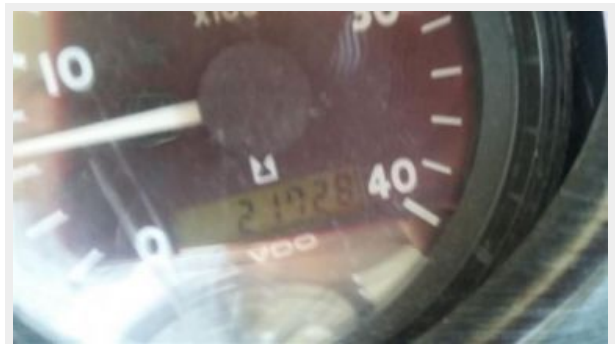
Disclaimer

The Company offers the details of this vessel or yacht in good faith but cannot guarantee or warrant the accuracy of this information nor warrant the condition of the vessel. A buyer should instruct his representatives, agents, or his surveyors, to investigate such details as the buyer desires validated. This vessel or yacht is offered subject to prior sale, price change, or withdrawal without notice.

PHOTOS











CONTACTS

Andrey Shestakov, leading yacht broker of the sales department of Shestakov Yacht Sales Inc. Shestakov Yacht Sales Inc., the official representative of the Miami/Fort Lauderdale FL headquarters.

Contact details

Email: andrey@shestakovyachtsales.com

Web: shestakovyachtsales.com/en/

Telephones

USA: +1(954)274-4435

Office hours

Monday – Saturday: **9:00 - 21:00** EDT

Sunday: **closed**

Address



Harbour Towne Marina, 850 NE 3rd St,
STE 213, Dania, FL 33004