

# **CORISANDE (NAME RESERVED) — LYMAN MORSE BOAT CO.**



**Builder:** LYMAN MORSE BOAT CO.

**Year Built:** 1987

**Model:** Motor Yacht

**Price:** PRICE ON APPLICATION

**Location:** United States

**LOA:** 46' 0" (14.02m)

**Beam:** 15' 0" (4.57m)

**Max Draft:** 3' 9" (1.14m)

**Cruise Speed:** 14 Kts. (16 MPH)

**Max Speed:** 16 Kts. (18 MPH)

Our experienced yacht broker, Andrey Shestakov, will help you choose and buy a yacht that best suits your needs **CORISANDE (Name Reserved) — LYMAN MORSE BOAT CO.** from our catalogue. Presently, at Shestakov Yacht Sales Inc., we have a wide variety of yachts available on our sale's list. We also work in close contact with all the big yacht manufacturers from all over the world.

If you would like to buy a yacht **CORISANDE (Name Reserved) — LYMAN MORSE BOAT CO.** or would like help answering any questions concerning purchasing, selling or chartering a yacht, please call **+1(954)274-4435**

# TABLE OF CONTENTS

TABLE OF CONTENTS	2
SPECIFICATIONS	4
Overview	4
Basic Information	4
Dimensions	4
Speed, Capacities and Weight	4
Accommodations	4
Hull and Deck Information	4
Engine Information	5
DETAILED INFORMATION	6
Accommodations	6
Galley	7
Electrical	7
Mechanical	8
Engine Data	8
Electronics	9
Sails & Rigging	9
Additional	9
2015 Upgrades	10
Exclusions	10
Exclusions	10
Disclaimer	10
PHOTOS	11
CONTACTS	26
Contact details	26
Telephones	26
Office hours	26
Address	26



---

# SPECIFICATIONS

---

## Overview

---

**PRELIMINARY LISTING - More pictures to come** CORISANDE is a beautiful example of the Jarvis Newman 46', built by Lyman Morse and majorly refit from 2007-2009.

## Basic Information

---

**Category:** Motor Yacht

**Model Year:** 1987

**Year Built:** 1987

**Country:** United States

**Fly Bridge:** Yes

**Cockpit:** Yes

## Dimensions

---

**LOA:** 46' 0" (14.02m)

**Beam:** 15' 0" (4.57m)

**Max Draft:** 3' 9" (1.14m)

## Speed, Capacities and Weight

---

**Cruise Speed:** 14 Kts. (16 MPH)

**Max Speed:** 16 Kts. (18 MPH)

**Displacement:** 42000 Pounds

**Water Capacity:** 250 Gallons

**Holding Tank:** 40 Gallons

**Fuel Capacity:** 600 Gallons

## Accommodations

---

**Total Cabins:** 2

**Total Heads:** 2

## Hull and Deck Information

---

**Hull Material:** Fiberglass

---

## Engine Information

---

**Engines:** 1

**Manufacturer:** Yanmar

**Model:** 6SY-STP

**Engine Type:** I/O

**Fuel Type:** Diesel

---

# DETAILED INFORMATION

---

---

## Accommodations

---

### Accommodations

Interior designed and finished by Lyman-Morse.

Incredibly spacious main cabin, finished in Butternut with Berber carpet under foot. Herreshoff-style finish in the fwd and aft cabins, with varnished mahogany trim on white panels and teak & holly cabin sole.

**Fwd VIP Stateroom** offers 6'8" headroom and 6' V-berths with a filler piece to create a large double. Storage is in an anchor locker at the fore peak, a ratan cabinet aft to stbd, in 5x drawers and cubbies under the berths, along hull side shelves, and in ratan hanging lockers aft to port. Light and air pour through screened opening cabin ports and a large overhead hatch.

**Fwd head & shower stall** are just aft to port with 6'4" headroom. Storage is in 3x cabinets above the counter, 1x cabinet and 2x drawers under the counter, and 1x cabinet over the head. A unique mirror hinges out from the aft bulkhead to make it easier to shave over the sink (see picture). This area is ventilated by a screened opening cabin port.

**Office** offers 6'5" headroom and a 6'4" long desk, which is a great spot to spread out a project. This cabin was originally a guest cabin, and the desk could be used again as a berth with the simple addition of a cushion or mattress. Storage is under the flip-top of the desk, in a deep cubby overhead, and in a hanging locker outboard. A screened opening cabin port and a screened overhead hatch provide natural light and air.

**Galley** runs along the stbd side of the fwd cabin area and offers 6'3" headroom. Storage is in 6x cabinets outboard, large slider cabinets over the stove, 1x drawer under the stove, 4x cabinets and 4x drawers under the counter. This area is kept fresh by 2x screened opening cabin ports.

**Main Salon** is brightly finished in Butternut, with 6'5" headroom, and versatile open standing room for entertaining. Doors to port, stbd, and aft provide access to all decks, and sliding windows to port and stbd let in a nice cross breeze. Large windshield lets in even more light and provides a nice view across the foredeck. Storage is in a wine cabinet, drawer, and chart drawer at the nav area fwd to port. In 2006 this cabin was reworked and a dinette with L-settee and pedestal table were built. The table lowers to create a double berth, and can be collapsed and removed via either door. During this reworking, butterfly doors were designed and installed to allow excellent access to the engine room.

**Aft Master Stateroom** is finished in the Herreshoff style with mahogany trim and teak & holly cabin sole. Headroom here is 6'3", with a 6'6" double berth to port with an ornate ratan headboard and a 6'6" single berth to stbd. Storage is in 4x slider cabinets to port and stbd, 2x drawers under the port berth and 8x drawers under the stbd berth, 4x drawers under a night

stand, and 2x ratan hanging lockers fwd to stbd. 3x screened opening cabin ports and a door to the aft cockpit keep this cabin fresh and light.

**Aft head & shower stall** offer 6'3"-6'5" headroom. Storage is in hullside slider cabinets, a cabinet and 2x drawers under the counter, and a cabinet above the head. This head also has a unique hinged double-sided mirror. A screened opening cabin port and solar fan keep this head ventilated.

**Decks** are wide for safe passage fore and aft. **Aft cockpit** has settees to port and stbd with storage below and a **transom door** for easy access to the swim platform. **Fly Bridge** has a unique layout with the upper helm positioned in the middle, around which one can walk to an L-settee fwd to stbd. There is additional seating on a bench seat aft with storage below. An upper nav station has a large chart table with storage below.

- Reverse cycle air conditioning
- Butternut finished main cabin
- Main cabin dinette settee
- Berber carpet in main cabin
- Herreshoff finished fwd and aft cabins with mahogany trim
- Dutch tile sole in fwd and aft heads
- VacuFlush fresh water MSD in fwd and aft heads
- Tank Watch 4 holding tank level indicator

## Galley

---

- Double basin stainless steel sink
- Hot & cold pressure fresh water and manual fresh water faucets
- Force 10 3-burner propane stove and oven
- Tile backsplash decorates and protects the bulkhead behind the stove
- 2x large over/under front-loading refrigerated ice boxes against the fwd bulkhead
- Another refrigerated ice box under the counter
- SeaFrost refrigerator compressors
- Seagull IV X-6 large capacity water filtration system

## Electrical

---

Extensive re-wiring done as part of the 2006-2008 refit, including all wiring in the engine room.

12V DC electrical system

- Breaker panel
- Volt & amp meters

- Balmar 110 amp alternator with external regulator
- Group 31 genset battery
- 2x 8D house/inverter batteries
- 4D engine start battery
- Interior lighting

#### 110V AC electrical system

- 12 kw Westerbeke. 2007 with 359 hrs. 9/15
- Breaker panel
- Volt & amp meters
- Mastervolt-Masterlink Mass combi charger/inverter
- Outlets
- Water heater, also engine driven
- 2x battery chargers

## Mechanical

- Fireboy extinguishing system
- Yanmar 6SY-STP 655HP diesel, 2007, 500 original hrs. 9/15
- ZF 2:1 reduction gear
- 2.5" stainless shaft
- 5 blade propellor
- Wagner hydraulic steering
- Reverso oil change system
- Dual Racor filters
- Engine space blowers
- New hydraulic bow thruster, Shipwrights Inc. twin prop
- New waste system plumbing
- 25 gal holding tank fwd with macerator
- 15 gal holding tank aft
- 2x electric bilge pumps
- 1x manual bilge pump

## Engine Data

1350 RPM	50% load	9.5 kt	7.1 gph
1600	59%	10.5	12.2
1800	64%	11.5	17
2000	73%	12.7	22



---

2063	80%	13.6	25
2111	85%	13.9	27.5
2280	100%	16.3	33

## Electronics

---

- Furuno NAVnet vx2 C-MAP NT MAX at lower helm with 15" LCD screen at upper helm
- Furuno RD-30 at upper and lower helm
- Radar - Furuno 4KW
- Furuno fish finder
- AutoNAV autopilot at upper and lower helm
- B&G speed/log at upper and lower helm
- B&G wind direction/speed at upper and lower helm
- Wagner rudder angle indicator at upper helm
- ICOM M-120 VHF at upper helm
- ICOM IC-M304 VHF at lower helm
- Danforth Constellation compass at upper helm
- Danforth Freedom compass at lower helm
- Dual trumpet air horn

## Sails & Rigging

---

Steadying sail, mounted on aft cabinhouse, with boom that can be used to hoist the dinghy onboard.

- Simpson Lawrence 12V electric winch
- Spinlock rope clutches
- Barient 27 CST winch

## Additional

---

- Bimini with full enclosure for fly bridge
- Bow pulpit with burgee flag staff
- Dual anchor rollers
- Maxwell/Nilsson 12V windlass with chain & rope drums
- High pressure deck wash down system
- Large gear stowage lockers on fwd end of cabin house
- 45# CQR anchor with rope and chain
- Fortress FX-37 anchor with rope & chain
- Double lifelines for safety

- Transom door
- Teak swim platform
- Swim boarding ladder
- Magma bbq grill
- Fenders and docklines
- Life ring

## 2015 Upgrades

---

At Huckins Shipyard – approx. \$37,000 (breakdown available with a serious buyer). Hull water report & pictures available with serious interest. \$30,000 refit at Yachting Solutions (receipts available with serious interest).

## Exclusions

---

List available at your request.

## Exclusions

---

Owner's personal belongings.

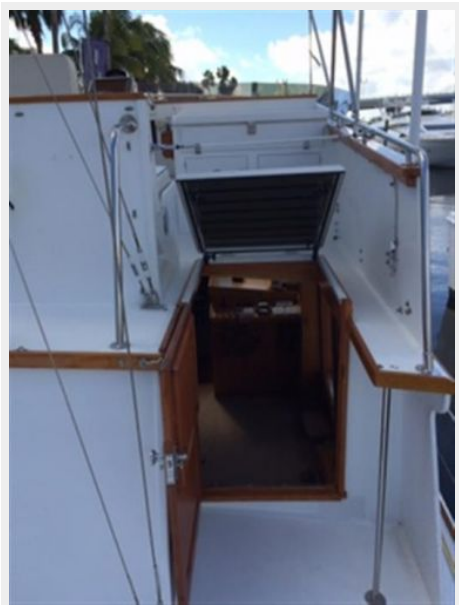
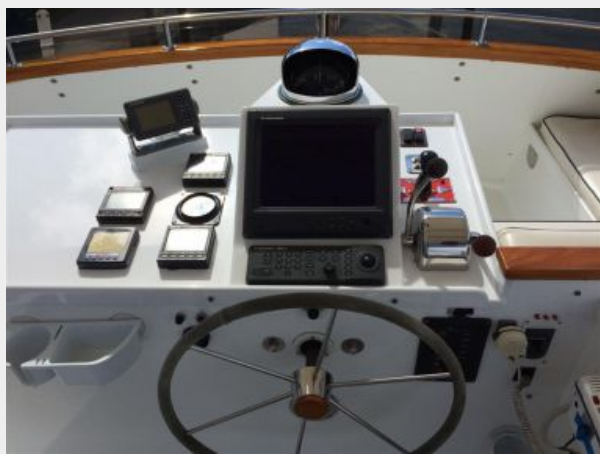
## Disclaimer

---

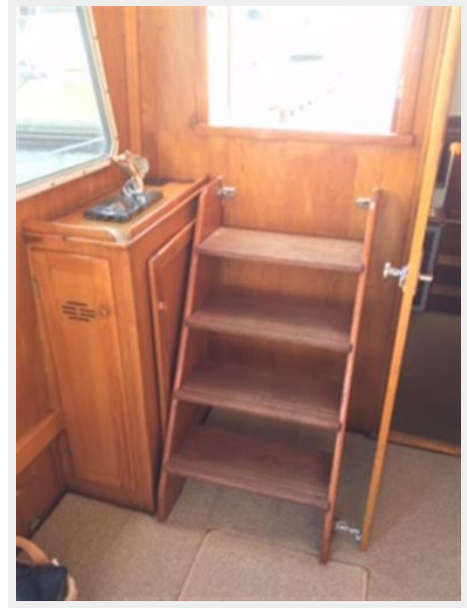
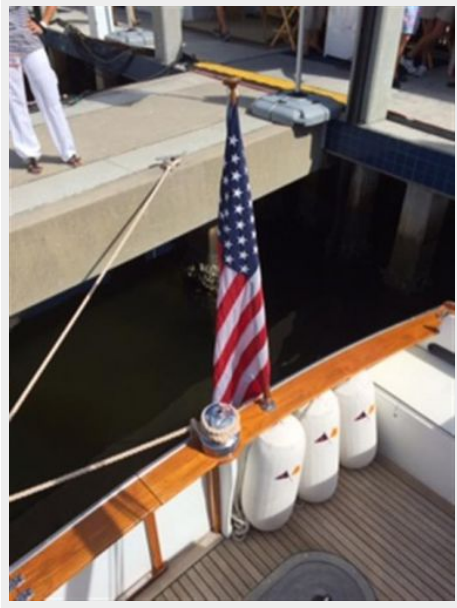
The Company offers the details of this vessel or yacht in good faith but cannot guarantee or warrant the accuracy of this information nor warrant the condition of the vessel. A buyer should instruct his representatives, agents, or his surveyors, to investigate such details as the buyer desires validated. This vessel or yacht is offered subject to prior sale, price change, or withdrawal without notice.

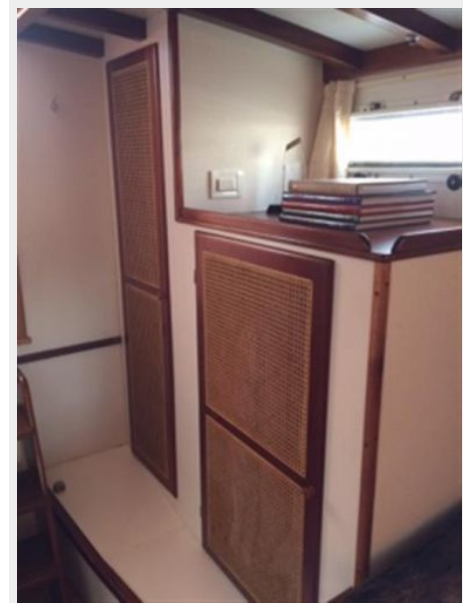
# PHOTOS

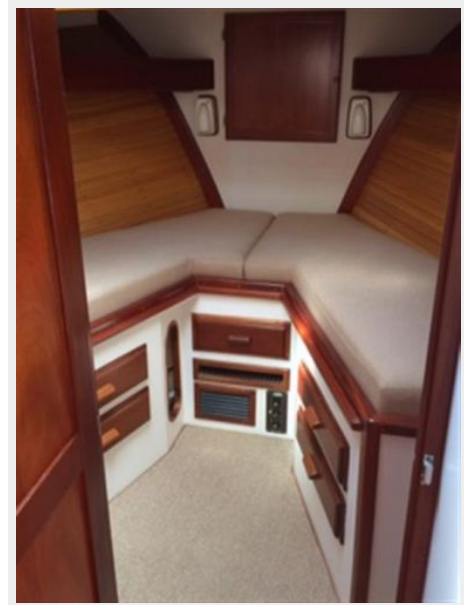
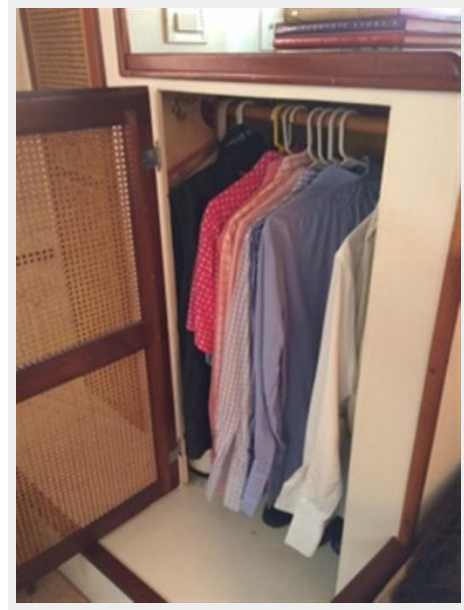




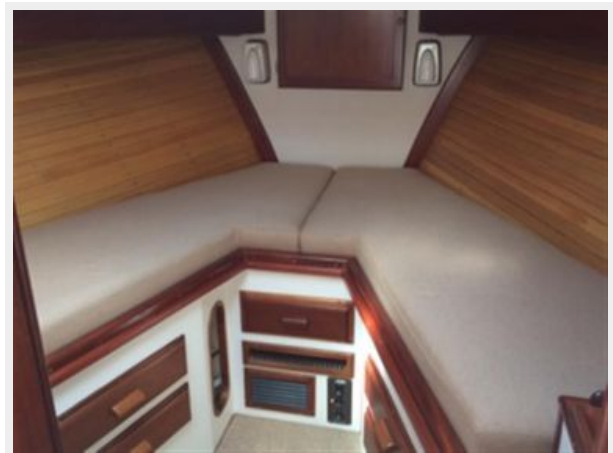




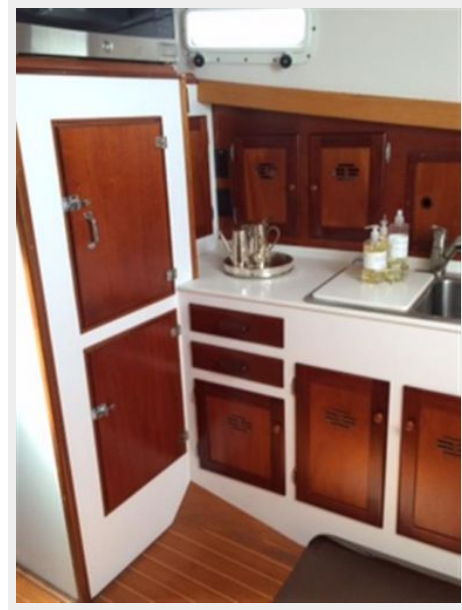


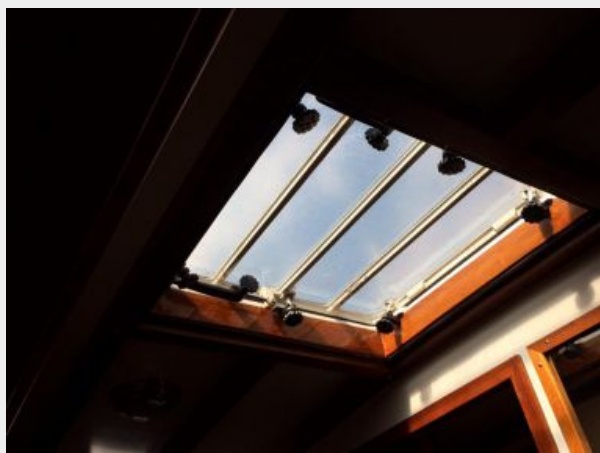
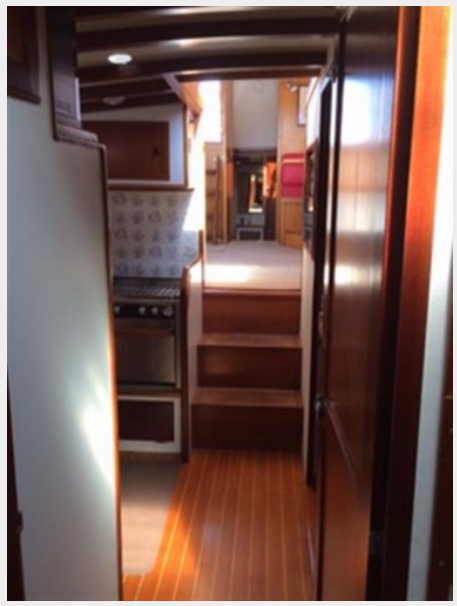


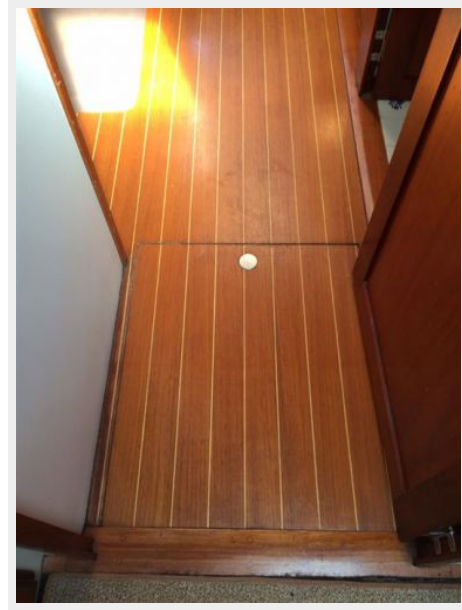




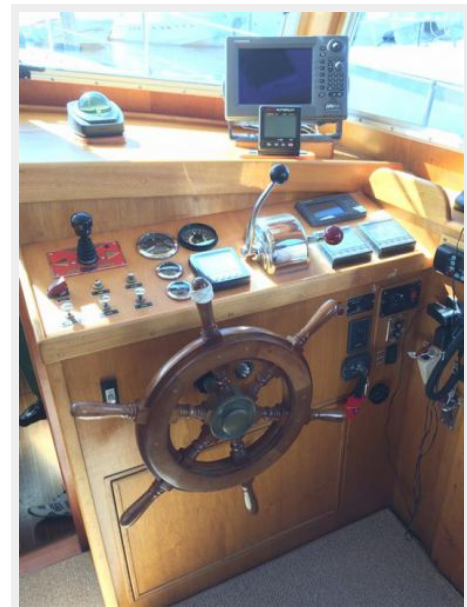
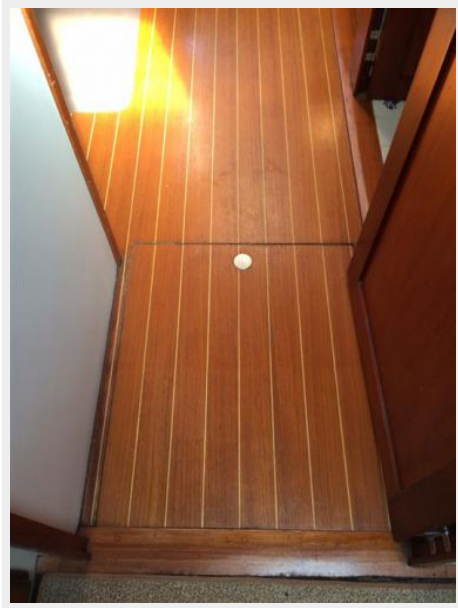


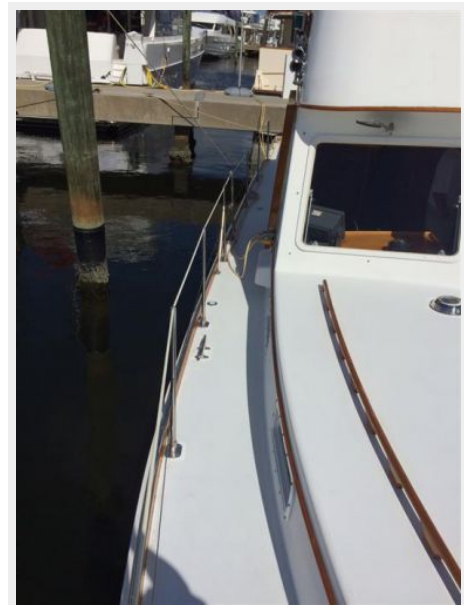


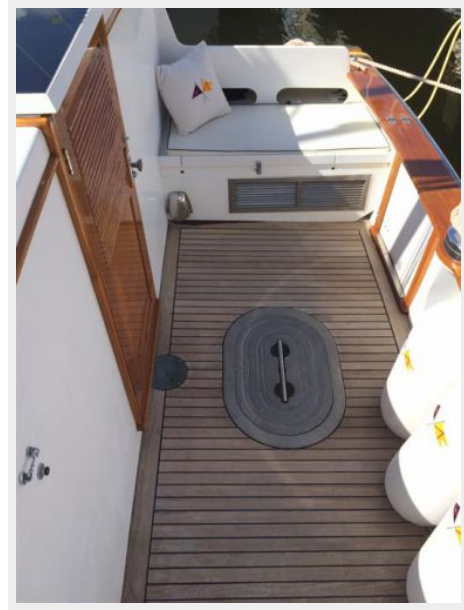
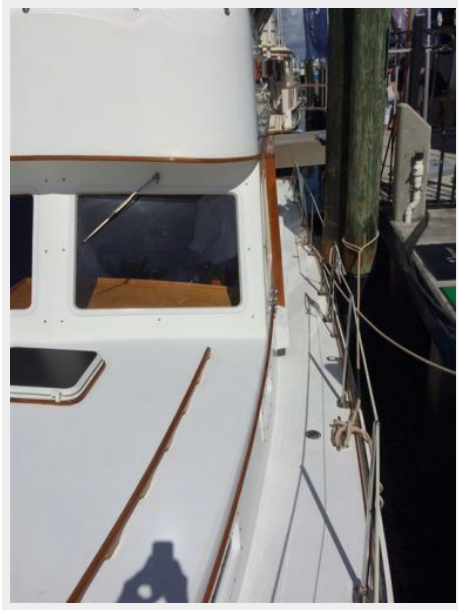






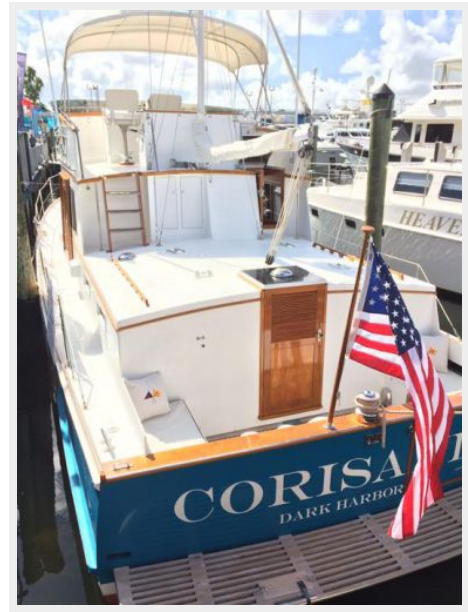
















# CONTACTS

---

Andrey Shestakov, leading yacht broker of the sales department of Shestakov Yacht Sales Inc. Shestakov Yacht Sales Inc., the official representative of the Miami/Fort Lauderdale FL headquarters.

## Contact details

---

Email: [andrey@shestakovyachtsales.com](mailto:andrey@shestakovyachtsales.com)

Web: [shestakovyachtsales.com/en/](http://shestakovyachtsales.com/en/)

## Telephones

---

USA: +1(954)274-4435

## Office hours

---

Monday – Saturday: **9:00 - 21:00** EDT

Sunday: **closed**

## Address

---



Harbour Towne Marina, 850 NE 3rd St,  
STE 213, Dania, FL 33004