

## ON ICE — VIKING



**Builder:** VIKING

**Year Built:** 2000

**Model:** Sport Fisherman

**Price:** PRICE ON APPLICATION

**Location:** United States

**LOA:** 65' 0" (19.81m)

**Beam:** 18' 9" (5.72m)

**Max Draft:** 5' 9" (1.75m)

Our experienced yacht broker, Andrey Shestakov, will help you choose and buy a yacht that best suits your needs **ON ICE — VIKING** from our catalogue. Presently, at Shestakov Yacht Sales Inc., we have a wide variety of yachts available on our sale's list. We also work in close contact with all the big yacht manufacturers from all over the world.

If you would like to buy a yacht **ON ICE — VIKING** or would like help answering any questions concerning purchasing, selling or chartering a yacht, please call **+1(954)274-4435**

# TABLE OF CONTENTS

TABLE OF CONTENTS	2
SPECIFICATIONS	4
Overview	4
Basic Information	4
Dimensions	4
Speed, Capacities and Weight	4
Accommodations	4
Hull and Deck Information	4
Engine Information	5
DETAILED INFORMATION	6
Tankage	6
Accommodations	6
Salon	6
Galley	6
Campanionway	6
Master Stateroom	7
Master Head	7
VIP Forward Stateroom	7
VIP Head	7
Guest Stateroom	7
Captains Quarters	8
Electronics	8
FLYBRIDGE	8
Deck and Hull	8
Fishing Equipment	9
Engine Room and Mechanical	9
Upgrades	9
Exclusions	10

---

Disclaimer	10
PHOTOS	11
CONTACTS	15
Contact details	15
Telephones	15
Office hours	15
Address	15

---

# SPECIFICATIONS

---

## Overview

---

Constant upgrades have kept this 65' Viking a modern and reliable vessel. Painted hull, custom mezzanine, teak cockpit, new running gear, new ACs and many other items have kept On Ice a ready-to-go-anywhere vessel.

## Basic Information

---

**Category:** Sport Fisherman

**Model Year:** 2000

**Year Built:** 2000

**Country:** United States

## Dimensions

---

**LOA:** 65' 0" (19.81m)

**Beam:** 18' 9" (5.72m)

**Max Draft:** 5' 9" (1.75m)

## Speed, Capacities and Weight

---

**Displacement:** 96000 Pounds

**Water Capacity:** 360 Gallons

**Holding Tank:** 200 Gallons

**Fuel Capacity:** 2000 Gallons

## Accommodations

---

**Total Cabins:** 4

## Hull and Deck Information

---

**Hull Material:** Fiberglass

**Hull Configuration:** Modified Deep Vee

---

## Engine Information

---

**Engines:** 2

**Manufacturer:** DDC/MTU

**Model:** 16V2000

**Engine Type:** Inboard

**Fuel Type:** Diesel

---

# DETAILED INFORMATION

---

## Tankage

---

- Fuel 2000 gallons
- Fresh Water 360 Gallons
- Waste 200 Gallons

## Accommodations

---

- Four staterooms including Captains quarters
- Four full heads with showers

## Salon

---

- Impressively large naturally lighted living area
- U Shaped sofa with storage
- High Low Teak cocktail table
- New 50" Flat screen Samsung TV
- Surround sound system with Blue Ray DVD/CD player
- Kitchen Aid Ice maker
- Liquor cabinet
- Electrical panel
- Cerwin Vega Amp with Niles speakers

## Galley

---

- Four Sub-Zero Refrigerated drawers
- Two Sub- Zero Freezer drawers
- Three burner electric Cook Top
- Convection Micro-Wave
- Trash compactor
- Amtico Floors
- Corian Counter Tops
- Garbage Disposal
- Large Pantry behind Galley

## Campanionway

---

- Carpeted with full runner cover

- 
- Storage Locker
  - Stacked Washer and Dryer

## Master Stateroom

---

- Free Standing King Bed
- Two night tables
- Two large closets
- Individual AC controls
- AM/FM Stereo

## Master Head

---

- Mirrored Ceiling
- Large separate Shower stall with bench seating
- VacuFlush Head
- Mirrored Vanity
- Exhaust Fan

## VIP Forward Stateroom

---

- Center island Queen Bed
- Storage under bed
- Dedicated AC Controls
- Hatch in Ceiling
- Two hanging Lockers

## VIP Head

---

- Separate Shower Stall
- Mirrored Ceiling
- VacuFlush Toilet
- Mirrored Medicine Cabinet
- Vanity with sink and storage below

## Guest Stateroom

---

- Upper lower berths
- Private entrance to Companionway head

- Hanging Locker

---

## Captains Quarters

---

- Aft on port side, private
- Generous upper and lower berths
- AC controls
- Complete full head with stall shower
- Access to engine room

---

## Electronics

---

- KVH TracVision TV system
- Robertson AP 22 Auto Pilot
- Sony A-4 remote DSS receiver
- Furuno FCV 292 Color Depth
- Northstar 961X GPS
- Northstar 951XD GPS
- Northstar 941X GPS
- KVH Trac Phone system
- Panasonic PBX telephone system
- Dytec C- temp gauge
- Garmin 5212 Plotter
- Skymate Sat email/weather system

---

## FLYBRIDGE

---

- Helm Chair
- Starboard Companions Chair
- 12v DC outlet
- Trim Tab and Bow Thruster controls
- Six aft mounted Rod holders
- Forward center line built in cabinets with Refrigerator/Freezer
- L-Shape bench seating with storage under
- Engine shutdown system and Fireboy discharge alarm
- Emergency backup engine controls
- Overhead lighting in hardtop
- Electric Teaser Reels

---

## Deck and Hull

---



- Teak Cockpit
- Custom Mezzanine
- Blue Water Tuna Tower with a 6' Gap and Buggy top
- Tower has DDEC controls, Richie Compass, NavNet repeater
- 2 Molded spreader lights facing forward and 2 Aft
- Recessed Running lights
- Fresh and Salt Water wash down system
- 3 Bomar Hatches
- Underwater Lights 4
- Refrigerated step box in Cockpit
- Anchor Locker

---

## Fishing Equipment

---

- Tigress Rod holders, 4 Zero degree and 4 30 degree
- Eskimo Ice maker
- Bait Freezer
- Fish box
- Murray Fighting Chair
- Cockpit Live well
- Rupp Triple spreader Outriggers and Rupp center Rigger
- Tuna Tower
- Transom door and gate
- Electric Teaser Reels

---

## Engine Room and Mechanical

---

- 2 20 KW Onan Generators in Sound Shields
- Bow Thruster installed 2012
- New Sea Star steering system from Tower down including new Rubber Rams
- New Shafts and Props 2013
- Oil transfer system
- AC Compressors, all units have either been replaced or upgraded within the past year
- 850 GPD "Water Makers" water maker
- Halon Fire control system

---

## Upgrades

---

- Custom Teak Cockpit
- New Salon Windows
- New Steering system

- Entire boat Re-Carpeted
- Complete factory engine service 2015
- New Enclosure 2015
- New Murray Brothers fighting chair 2015
- Bottom soda blasted, Barrier coated and painted 2015
- New Garmin GPS Map 7612XSV with 14KW HD Radar 2015
- New 6 Person Life Raft 2015
- New LED lights under Bridge Hardtop

New Veem Propellers, new Shafts, and Struts 2015

- New Stainless Rudders
- New Seacocks in Engine Room
- Cockpit Mezzanine
- New Mezzanine and Fly Bridge Cushions

## **Exclusions**

---

Owner's personal belongings.

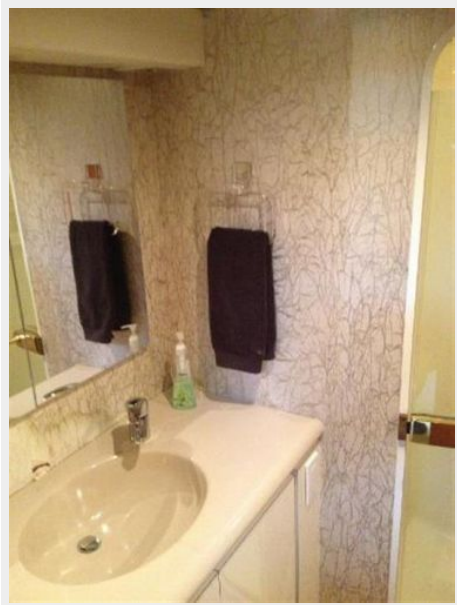
## **Disclaimer**

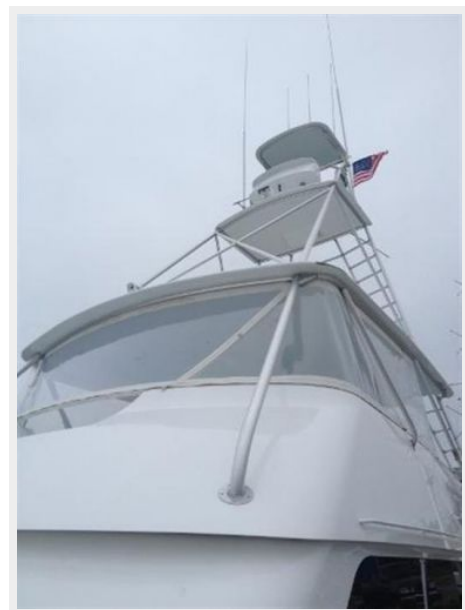
---

The Company offers the details of this vessel or yacht in good faith but cannot guarantee or warrant the accuracy of this information nor warrant the condition of the vessel. A buyer should instruct his representatives, agents, or his surveyors, to investigate such details as the buyer desires validated. This vessel or yacht is offered subject to prior sale, price change, or withdrawal without notice.

# PHOTOS









---

# CONTACTS

---

Andrey Shestakov, leading yacht broker of the sales department of Shestakov Yacht Sales Inc. Shestakov Yacht Sales Inc., the official representative of the Miami/Fort Lauderdale FL headquarters.

---

## Contact details

---

Email: [andrey@shestakovyachtsales.com](mailto:andrey@shestakovyachtsales.com)

Web: [shestakovyachtsales.com/en/](http://shestakovyachtsales.com/en/)

---

## Telephones

---

USA: +1(954)274-4435

---

## Office hours

---

Monday – Saturday: **9:00 - 21:00** EDT

Sunday: **closed**

---

## Address

---



Harbour Towne Marina, 850 NE 3rd St,  
STE 213, Dania, FL 33004