

## LYRIC III — MARQUIS



**Судостроитель:** MARQUIS

**Год постройки:** 2007

**Модель:** Моторная яхта

**Цена:** ЦЕНА ЯХТЫ ПО ЗАПРОСУ

**Местонахождение:** United States

**Длина общая:** 59' 0" (17.98m)

**Ширина:** 16' 6" (5.03m)

Купить Lyric III — MARQUIS а также выбрать подходящую вам яхту из нашего каталога яхт вам поможет опытный яхтенный брокер Андрей Шестаков. На сегодняшний день компания Shestakov Yacht Sales Inc. имеет большое количество яхт в собственном списке продаж, а также тесно сотрудничает со всеми крупными яхтенными производителями по всему миру.

Для того чтобы купить яхту Lyric III — MARQUIS а также проконсультироваться по любому вопросу связанному с покупкой, продажей, чартером яхт позвоните по телефону **+7(918)465-66-44**.

# ОГЛАВЛЕНИЕ

ОГЛАВЛЕНИЕ	2
ХАРАКТЕРИСТИКИ	4
Обзор	4
Основная информация	4
Размеры	4
Скорость, вместимость и масса	4
Размещение	5
Корпус и палуба	5
Информация о двигателе	5
ПОДРОБНОЕ ОПИСАНИЕ	6
Vessel Description	6
Исключения	7
Отказ от ответственности	8
ФОТОГРАФИИ	9
Bow Profile	9
Stern Profile	9
Starboard House	9
Port Profile	9
Bow Sun Deck	10
Bow	10
Cockpit	10
Cockpit	10
Cockpit	10
Flybridge	10
Flybridge	11
Flybridge	11
Flybridge/Aft Deck	11
Helm Area	11

---

Salon	11
Salon	11
Salon	12
Salon/Galley	12
Dining Area	12
Galley	12
Galley	12
Companionway	12
Master Stateroom	13
Master Stateroom	13
Master Head	13
Forward VIP Stateroom	13
Guest Head	14
Starboard Guest Stateroom	14
Washer/Dryer	14
Crew Quarters	14
Crew Quarters	15
Engine Room	15
Engine Room	15
Engine Room	15
Engine Room	16
КОНТАКТЫ	17
Контактная информация	17
Телефоны	17
Время работы	17
Адрес	17

---

# ХАРАКТЕРИСТИКИ

## Обзор

LYRIC III is a 2007 59' Marquis (*Markham Edition*) and is new to the marketplace. The boat is powered with the upgraded, twin MTU/Series 60 engines (825 HP) with only 750 hours. LYRIC III is available for viewings at the Allied Marine docks in Stuart, Florida.

Call for more details and/or to schedule an appointment.

**Additional photos are available upon request.**

## Основная информация

**Тип судна:** Моторная яхта

**Подкатегория:** Кубрик

**Модельный год:** 2007

**Год постройки:** 2007

**Страна:** United States

**Открытая палуба мостика:** Да

**Кубрик:** Да

## Размеры

**Длина общая:** 59' 0" (17.98m)

**Длина по ватерлинии:** 0' 0" (0.00m)

**Ширина:** 16' 6" (5.03m)

## Скорость, вместимость и масса

**Водоизмещение:** 64000 Pounds

**Вместимость воды:** 200 Gallons

**Объем топливного бака:** 800 Gallons

## Размещение

---

Всего кают: 3

Спальные места: 6

Всего ком. состава: 2

Каюты экипажа: 1

Койки экипажа: 1

Комм. состав экипажа: 1

## Корпус и палуба

---

Материал корпуса: Fiberglass

## Информация о двигателе

---

Двигатели: 2

Производитель: MTU

Модель: Series 60

Тип двигателя: Inboard

Тип топлива: Diesel

# ПОДРОБНОЕ ОПИСАНИЕ

## Vessel Description

**Overview:** LYRIC III is a 2007 59' Marquis (*Markham Edition*) and is new to the marketplace. The boat is powered with the upgraded, twin MTU/Series 60 engines (825 HP) with only 750 hours. LYRIC III is available for viewings at the Allied Marine docks in Stuart, Florida. Call for more details and/or to schedule an appointment. **Additional photos are available upon request.**

**Salon:** • Heavy-Duty Stainless Steel aft salon door with screen slide out • High Gloss Cherry Wood Paneling Throughout • Tasteful Carpeting • (2) Leather Sofas (port sofa pulls out) • Custom Salon Blinds • Aft Privacy Curtain • Lamp Lighting • Overhead Lighting • Bose Stereo Speakers • SONY Entertainment Center • Solè Television (recessed overhead) • CruisAir AC with Digital Controls • Electrical Outlets • (2) Electrical Panels **Galley:** • Open-Galley to Starboard • Black Granite Countertops • (2) Recessed Stainless Steel Sinks • Storage Underneath Counter • Granite Flooring • Sub-Zero under-counter refrigerator/freezer • TAPPAN Microwave/Convection Grill • Overhead Lighting • Fisher & Paykel Dishwasher • Built-In Coffee Maker • Princess Two-Burner Cooktop • Cabinet Space and Drawers Throughout • Electrical Outlets • Exhaust Fan **Port Side Galley Area:** • Located to Port • Glass Cabinetry with Plate, Bottle, and Glassware Storage • BROAN Trash Compactor • Sink with Faucet • (4) VITRIFRIGO Sub-Zero Drawers • Storage Below • Granite Flooring **Dinette/Dining Area:** • Located Forward of Galley(s) • Ample Seating • High-Gloss Dining Table • Beige Upholstery • Insignia Flatscreen Television • Carpet Runners • Fisher & Paykel Dishwasher **Companionway:** • High-Gloss Cherry Wood Throughout • Malber Washer & Dryer • Storage Cabinet • Carpet with Runners • Courtesy Lights in Steps • Overhead Lighting • Privacy Doors to Staterooms and Heads • Granite Surfaces **Master Stateroom:** • Located Aft, Full-Beam • Island King Berth • Mirrored Headboard • High-Gloss Cherry Wood Throughout • Designer Bedding & Pillows • Beige Carpeting with Runners • Sliding Privacy Entry Door • Port Holes with Curtains/Blinds • Night Stands & Drawer Storage • CruisAir AC with Digital Controls • (2) Dresser Mirrors (port & starboard) • (2) Large Cedar-Lined Hanging Closets (port & starboard) • Overhead Headliner • VIZIO Flatscreen Television • Electrical Outlets • CO Detector • Overhead Lighting • En-suite Head • Storage Drawers & Cabinetry Throughout • Clarion FM/AM Player with SAT Radio Capability **Master Stateroom Head:** • Black Granite Flooring • VACUFLUSH Head • Stall Shower with Large Tub • Port Hole Window • Black Granite Countertop with Molded Sink & Designer Faucet • Storage Below Vanity • Large Mirror • High-Gloss Cherry Cabinetry • Towel Racks • Electrical Outlets • A/C Vent • Exhaust Fan **VIP/Forward Guest Stateroom:** • Queen Berth • Mirrored Headboard • BOMAR Overhead Hatch with Screen • Clarion FM/AM Stereo with SAT Radio Capability • Storage Underneath Bed • Storage Above Bed (port & starboard) • Designer Bedding and Pillows • Carpeting with Runners • Drop-down Television • High-Gloss Cherry Wood Throughout • Reading Lights • CruisAir AC with Digital Controls • Hanging Locker • En-suite Head • Port Holes with Blinds • Clarion Speakers Overhead **VIP Guest Stateroom Head:** • Located to Port • Stall Shower • Black Granite Countertop, Vanity, Sink and Mirror • Black Granite Flooring • VACUFLUSH Head • Mirrored Medicine Cabinet • Porthole in Stall Shower • Towel Racks • Overhead Lighting • A/C Vents • Exhaust Fan **Starboard Guest Stateroom:** •

Over/Under Single Berths • Bedding and Pillows • Carpeting with Runners • Hanging Locker • High-Gloss Cherry Wood Throughout • Reading Light • Overhead Lighting • Electrical Outlets • Smoke Detector • Porthole • Table Surface with Storage Below • Cabinetry below Bottom Bunk

**Aft Deck:** • Side Boarding Doors (port & starboard) • (2) Teak Folding Chairs • Molded Stairs to Flybridge with Grab Rail • Aft Door Entrance from Swim Platform (starboard side) • Heavy-Duty, Stainless Steel Salon Door • Storage Areas (port & starboard) • Engine Room Access in Cockpit Sole • Stainless Steel Cleats • Fresh Water Shower • Courtesy Lighting Overhead • Outlets for Television/Telephone • Extended Overhang for Aft Deck • Port & Starboard Stern Cleats • Clarion Marine FM/AM Player • FIREBOY System • Cockpit Seating • Teak Table • Scuppers • Clarion Overhead Speakers

**Swim Platform:** • Entrance to Engine Room/Crew Quarters • Storage Areas (port & starboard) • Stainless Steel Cleats • Steps to Aft Deck • Freshwater Shower • Wash Down • Outlets for Television/Telephone • Dockside Water Inlet • Access to Lazarette • Fuel Fill Caps (port & starboard) • Glendenning Shore Power; (2) 50-amp Chords

**Flybridge & Helm:** • MTU Engine Displays • MTU Single-Lever Controls • Dual Helm Chairs with Portside Settee • Wet Bar with Sink and Storage • GAGGENAU Grill (starboard) • U-Line Ice Maker • U-line Refrigerator • Aft Seating with Cushions & Table • Horn • Trim Tab Controls • Windlass Remote • FIREBOY Engine Shutdown System • Ritchie 5" Compass • ACR Spotlight Controls • Bow & Stern Thruster • Clarion Stereo with Speakers • Factory Hard Top with 4-sided Enclosure • Overhead Lighting • Helm Air Conditioning • Helm Wheel • Cup Holders • 12-volt Outlets

**Aft Flybridge Sundeck:** • Wrap-around Railing/Fencing

**Electronics:** • Garmin 7612 Chart Plotter • Furuno NAVnet VX2 • Furuno Open-Array Radar • ICOM VHF Radio (IC-M602) • Furuno RD-30 • Clarion Stereo with Speakers • ACR Spotlight Controls • Ritchie 5" compass • Simrad Autopilot (AP25)

**Hull & Deck Equipment:** • Black Bottom Paint & Boot Stripe • Factory Hard Top with Full Enclosure • Bow & Stern thruster • Trim Tabs • Transom Door and Side Doors • MAXWELL Windlass Anchor System • Dockside Water Inlet • (2) Antennas Mounted to Hard Top • Navigation Lights • Bow Sunpad with Cover • Forward Windshield Screen/Cover • Fresh Water Wash Down (bow) • Stainless Steel Bow Rail • Stainless Steel Cleats

**Engine Room & Mechanical:** • Twin MTU/Series 60 825 HP Diesel Engines • Twin-Disc Gears • Kohler 23 KW Generator with 1,111 Hours • Large Fire Suppression Bottle • REVERSO Oil Change System • A/C Raw Water Pumps • Hot Water Heater • Engine Room Blower and Fans • Dripless Shaft Logs • Overhead Lighting • Charles Battery Chargers • Charles IQ-2600 Inverter • Fuel Tanks • Racor Filters • Fuel Water Separators • Bilge Pumps • Rod Storage Centerline • FIREBOY System • Battery Banks

**Crew Quarters:** • Entrance through Door from Swim Platform • 1 Berth • Sink • Head • Storage Throughout • Access to Engine Room • CruisAir AC Control • Water-Tight Door to Engine Room

**Electrical:** • Kohler 23 KW Generator with 1,111 Hours • 12V/24V/120V/240V 50-Amp System • Electrical Panel and Sub-Panel • Battery Parallel • Shore Power Chords with Cablemaster • Battery Banks • Shore Power Connection under Forward Bow Hatch • Batteries • Charles ISO-Boost System • Charles ISO-Transformer

**Exclusions:** • Owner's Personal Belongings

## Исключения

При продаже яхты исключаются личные вещи владельца.

---

## Отказ от ответственности

---

Компания предоставляет описание судна или яхты добросовестно, но не может гарантировать точность этой информации, а также не ручается за техническое состояние. Покупатель должен проинструктировать своих агентов или оценщиков исследовать представленную информацию более подробно, по собственному желанию. Продажа судна или яхты, изменение цены или снятие с продажи будет происходить без предварительного уведомления.



# ФОТОГРАФИИ

**Bow Profile**



**Stern Profile**



**Port Profile**



**Starboard House**



**Bow Sun Deck**



**Bow**



**Сockpit**



**Cockpit**



**Сockpit**



**Flybridge**



**Flybridge**



**Flybridge**



**Flybridge/Aft Deck**



**Helm Area**



**Salon**



**Salon**





**Salon**



**Salon/Galley**



**Dining Area**



**Galley**



**Galley**



**Companionway**



**Master Stateroom**



**Master Stateroom**



**Master Head**



**Forward VIP Stateroom**



**Guest Head**



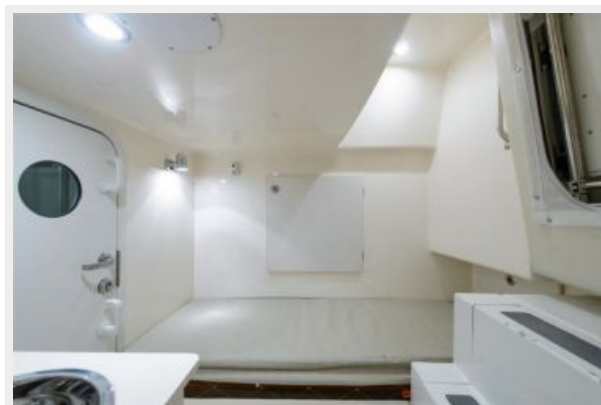
**Starboard Guest Stateroom**



**Washer/Dryer**



**Crew Quarters**





**Crew Quarters**



**Engine Room**



**Engine Room**



**Engine Room**



## Engine Room





# КОНТАКТЫ

---

Андрей Шестаков (Andrey Shestakov) – ведущий яхтенный брокер отдела продаж яхт и судов компании Shestakov Yacht Sales Inc. Официальный представитель Shestakov Yacht Sales Inc. для русскоговорящих клиентов в центральном офисе компании в Майами/Форт Лодердейл/Флорида/США.

## Контактная информация

---

Email: [andrey@shestakovyachtsales.com](mailto:andrey@shestakovyachtsales.com)

Web: [shestakovyachtsales.com](http://shestakovyachtsales.com)

## Телефоны

---

Краснодарский край: **+7(918)465-66-44**

США, Майами, Флорида: **+1(954)274-4435**

## Время работы

---

Понедельник – Суббота: **9:00 - 21:00**  
EDT

Воскресенье: **Закрето**

## Адрес

---



Harbour Towne Marina, 850 NE 3rd St,  
STE 213, Dania, FL 33004