

ESCONDIDA — MANTA



Builder: MANTA

Year Built: 2004

Model: Catamaran

Price: PRICE ON APPLICATION

Location: Puerto Rico

LOA: 42' 0" (12.80m)

Beam: 21' 0" (6.40m)

Max Draft: 3' 8" (1.12m)

Our experienced yacht broker, Andrey Shestakov, will help you choose and buy a yacht that best suits your needs **Escondida — MANTA** from our catalogue. Presently, at Shestakov Yacht Sales Inc., we have a wide variety of yachts available on our sale's list. We also work in close contact with all the big yacht manufacturers from all over the world.

If you would like to buy a yacht **Escondida — MANTA** or would like help answering any questions concerning purchasing, selling or chartering a yacht, please call **+1(954)274-4435**

TABLE OF CONTENTS

TABLE OF CONTENTS	2
SPECIFICATIONS	3
Overview	3
Basic Information	4
Dimensions	5
Speed, Capacities and Weight	5
Accommodations	5
Hull and Deck Information	5
Engine Information	5
PHOTOS	6
CONTACTS	12
Contact details	12
Telephones	12
Office hours	12
Address	12

SPECIFICATIONS

Overview

Escondida is a clean, well maintained, updated, well equipped example of the highly sought after Manta 42 MK II catamaran. This original owner yacht is outfitted for extensive cruising.

The yacht was last hauled, surveyed, and serviced in June 2014, including premium bottom paint, saildrive maintenance, generator maintenance, and extensive preventative maintenance on all systems. This is a clean MK II, ready for your cruising dream.

Cruising catamaran and multi-hull expert. Manta Catamaran factory Technical Advisor & exclusive North American representative. Professional captain with 20+ years cruising, live aboard, and racing experience.

Boat Name Escondida **Specs** Builder: Manta Catamarans Designer: Manta Enterprises Flag of Registry: United States Keel: Fin Hull Shape: Catamaran **Dimensions** LOA: 41 ft 8 in Beam: 21 ft 0 in LWL: 39 ft 10 in Maximum Draft: 3 ft 8 in Displacement: 21000 lbs Full Load Bridge Clearance: 60 ft 0 in Headroom: 6 ft 4 in Dry Weight: 18500 lbs **Engines** Engine 1: Engine Brand: Volvo Year Built: 2004 Engine Model: MD2030 Engine Type: Inboard Engine/Fuel Type: Diesel Location: Starboard Propeller: Folding propeller Drive Type: Sail drive Engine Power: 30 HP Engine 2: Engine Brand: Volvo Year Built: 2004 Engine Model: MD2030 Engine Type: Inboard Engine/Fuel Type: Diesel Location: Port Propeller: Folding propeller Drive Type: Sail drive Engine Power: 30 HP **Tanks** Fresh Water Tanks: 1 (100 Gallons) Fuel Tanks: 1 (120 Gallons) Holding Tanks: 2 Plastic (20 Gallons) **Accommodations** Number of single berths: 1 Number of double berths: 2 Number of cabins: 3 Number of heads: 2 **Electronics** VHF Radar - 4 kw Raymarine CD player Depthsounder GPS Wind speed and direction Log-speedometer Cockpit speakers DVD player Compass TV set Plotter Autopilot Repeater(s) Radio **Sails** Fully battened mainsail - Stack pack mainsail cover Genoa - 100% full batten with camber spar, self tacking **Rigging** Electric winch - Harken 42 two speed handles all lines at the helm Steering wheel **Inside Equipment** Air conditioning - CruiseAir 16k btu front, 12k btu aft Battery charger - 100 amp Washing machine - Splendide washer/dryer Hot water - Isotemp 11 gal engine/electric Electric head - Jabsco Quiet Flush Refrigerator - 6 cu. ft. Sea water pump - washdown tap at anchor windlass Fresh water maker - Spectra Catalina 300 gpd with remote at instrument panel Oven - Force 10 three burner with oven Manual bilge pump Heating - Dometic reverse cycle Microwave oven Deep freezer - 4 cu. ft. Electric bilge pump **Electrical Equipment** Inverter - 2000 W Generator - Northern Lights Shore power inlet - 2 x 30 Amp Electrical Circuit: 110V **Outside Equipment/Extras** Cockpit shower Swimming ladder - 3 step telescoping both sterns Tender - Caribe C12 with 15 hp Yamaham Cockpit table Solar panel - 450 watts, charger controller with instrument panel remote Davits Liferaft - 6 person Cockpit cushions Total Liferaft Capacity: 6 Electric windlass **Covers** Spray hood Lazyjacks Genoa cover Cockpit cover Mainsail cover Lazy bag

Sails and Rigging

Doyle OEM Sails main and camber spar jib.

IJPE : 693.00 sq ft I : 43.42 ft J : 14.92 ft P : 45.42 ft E : 16.25 ft Working Sail Area : 833.00 sq ft

One Doyle Stackpack for mainsail

Electronics

Complete Raymarine suite:

Auto-Pilot: Raymarine ST 6001.Helm Sta. Chart plotter/Radar : Raymarine C 80 Multi
Depth/Speed: Ray Marine ST 60. Helm Sta. Wind instrument: Ray Marine.ST 60. Helm Sta.

Magnetic Compass: Ritchie powerdamp. Helm Sta.

VHF: Icom IC M 402 VHF Operational VHF Remote: Icom Remote Mic. Helm Sta. Operational

Anchor Tackle

Ground Tackle:

Primary - Delta 45 lb with 200 ft rode good condition

Maxwell VWC1500 electric windlass.

Manufacturer Provided Description The Manta 42 MkII incorporates features developed from owner feedback with thousands of ocean miles sailed over the past eight years. Each Manta is built to order, and offers the best quality/value ratio of any production catamaran in the world today.

Basic Information

Category: Catamaran

Sub Category: Cruising Sailboat

Model Year: 2004

Year Built: 2004

Country: Puerto Rico

Dimensions

LOA: 42' 0" (12.80m)

LWL: 39' 10" (12.14m)

Beam: 21' 0" (6.40m)

Max Draft: 3' 8" (1.12m)

Clearance: 60' 0" (18.29m)

Speed, Capacities and Weight

Displacement: 21000 Pounds

Water Capacity: 100 Gallons

Holding Tank: 20 Gallons

Fuel Capacity: 120 Gallons

Accommodations

Total Cabins: 3

Total Berths: 3

Sleeps: 5

Total Heads: 2

Hull and Deck Information

Hull Material: Fiberglass

Hull Configuration: Catamaran

Engine Information

Engines: 2

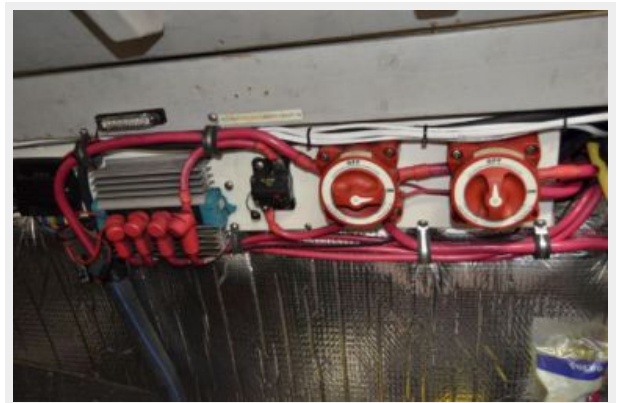
Manufacturer: Volvo

Model: MD2030

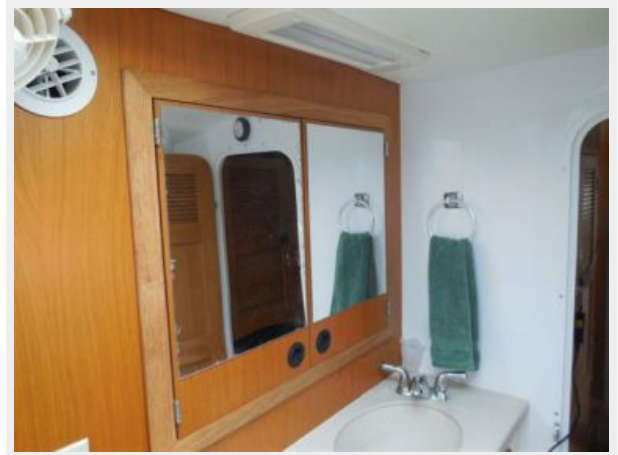
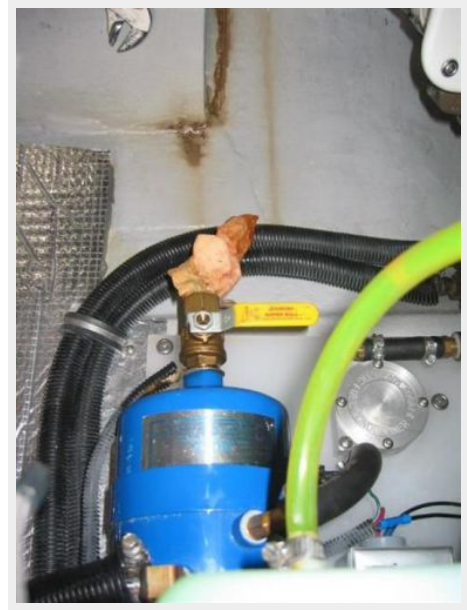
Engine Type: Inboard

Fuel Type: Diesel

PHOTOS

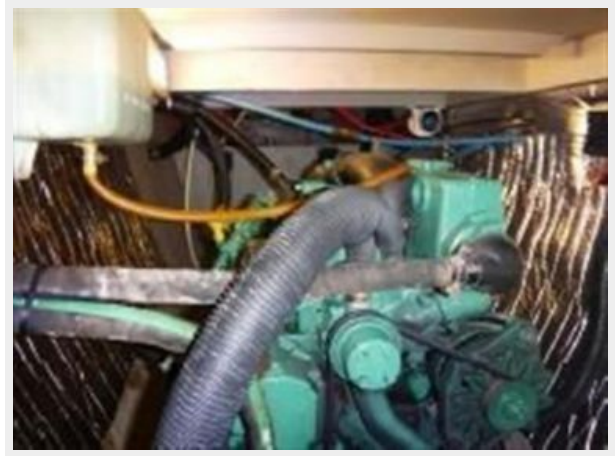












CONTACTS

Andrey Shestakov, leading yacht broker of the sales department of Shestakov Yacht Sales Inc. Shestakov Yacht Sales Inc., the official representative of the Miami/Fort Lauderdale FL headquarters.

Contact details

Email: andrey@shestakovyachtsales.com

Web: shestakovyachtsales.com/en/

Telephones

USA: +1(954)274-4435

Office hours

Monday – Saturday: **9:00 - 21:00** EDT

Sunday: **closed**

Address



Harbour Towne Marina, 850 NE 3rd St,
STE 213, Dania, FL 33004