

## KUIE II — SEA RAY



**Builder:** SEA RAY

**LOA:** 58' 7" (17.86m)

**Year Built:** 2008

**Model:** Motor Yacht

**Price:** PRICE ON APPLICATION

**Location:** United States

Our experienced yacht broker, Andrey Shestakov, will help you choose and buy a yacht that best suits your needs **KUIE II — SEA RAY** from our catalogue. Presently, at Shestakov Yacht Sales Inc., we have a wide variety of yachts available on our sale's list. We also work in close contact with all the big yacht manufacturers from all over the world.

If you would like to buy a yacht **KUIE II — SEA RAY** or would like help answering any questions concerning purchasing, selling or chartering a yacht, please call **+1(954)274-4435**

# TABLE OF CONTENTS

TABLE OF CONTENTS	2
SPECIFICATIONS	4
Basic Information	4
Dimensions	4
Accommodations	4
Hull and Deck Information	4
Engine Information	4
DETAILED INFORMATION	5
Hull and Deck Features	5
Cockpit	5
Bridge Features	6
Cabin Features	6
Salon	7
Galley	7
Dinette	8
Master Stateroom	8
Master Head	8
Guest Stateroom	8
Guest Head	9
Control System	9
Electrical Equipment	9
Exclusions	10
Disclaimer	10
PHOTOS	11
CONTACTS	14
Contact details	14
Telephones	14
Office hours	14

---

Address

14

---

# SPECIFICATIONS

---

## Basic Information

---

**Category:** Motor Yacht

**Model Year:** 2008

**Year Built:** 2008

**Country:** United States

## Dimensions

---

**LOA:** 58' 7" (17.86m)

## Accommodations

---

**Total Cabins:** 2

## Hull and Deck Information

---

**Hull Material:** Fiberglass

## Engine Information

---

**Engines:** 2

**Manufacturer:** MAN

**Model:** 900

**Fuel Type:** Diesel

---

# DETAILED INFORMATION

---

## Hull and Deck Features

---

- Bottom Paint
- Bow Rail, 316 Stainless Steel w/Welded Stanchions,
- Intermediate Rails & Life Lines
- Cleats, Custom Sea Ray Thru-Bolted
- Bollard Style - Stainless Steel (8)
- Deck Fill Plates, Stainless Steel
- Deck Rails, 316 Stainless Steel
- Gel Coat, Arctic White
- Graphics, Striping
- Handrails, 316 Stainless Steel
- Hatch, Deck Vent - Translucent w/Locks & Sky Screen Cover(Trapezoid)
- Hull Windows, Stainless Steel (3 Fixed)
- Lights, Navigation
- Portlights, Stainless Steel (5 Fixed,1 Opening)
- Resin, High-Performance Vinylester
- Rub Rail, PVC w/Stainless-Steel Insert Storage, Transom Wall (For Fenders& Gear)
- Swim Platform, Integral w/Concealed
- Stainless-Steel Three-Step Swim
- Ladder w/Integral Grab Handle
- Thru-Hull Fittings, Stainless Steel
- Vent System, Engine Room -Integral
- Windshield, Tempered/Tinted Curved
- Glass (Bonded-In) w/Deck Side Windows

## Cockpit

---

- Carpet Liner, Snap-In
- Door, Cabin Entry (Sliding & Lockable)w/Screen - Stainless Steel
- Door, Transom - Acrylic
- Floor Liner, Self-Bailing Fiberglass w/Gas-Assisted Engine Room
- Service Hatch
- Handrails, 316 Stainless Steel
- Lighting, Indirect 24V
- Outlet, 120V GFI Protected
- Seating, Aft Bench (Recessed into Transom Wall)
- Steps, Boarding (Mold-In)
- Storage, Side Panels - Port & Starboard

---

## Bridge Features

---

- Beverage Holders (4)
- Carpet Liner, Snap-In
- Handrails, 316 Stainless Steel
- Hardtop, Fiberglass w/Overhead
- Storage, Vent Hatch & Overhead
- Lighting w/Electronic Dimmer & Red Night Lighting
- Hatch, Bridge Access
- Icemaker, 120V
- Lighting, Indirect 24V
- Outlet, 12V Accessory
- Outlet, 120V GFI Protected
- Outlet, Cable TV
- Refrigerator, 120V
- Seating, Aft Bench w/Storage Below
- Seating, Helm (2) w/Armrests,
- Reclining Backrests, Stainless Steel
- Fold-Down Footrests & Heavy-Duty
- Pedestals w/Slides, Swivels &
- Pneumatic Vertical Adjustment
- Seating, U-Shaped w/Storage
- Below - Forward
- Ships Bell
- Steps, Molded Bridge Access w/Storage Below
- Stereo, Clarion 12V AM/FM Single CD,
- Sirius Satellite Receiver w/Antenna,
- MP3 Port, 6-Disc CD Changer,
- Amplifier, Subwoofer, Speakers (4 -Bridge, 2 - Cockpit) & Digital Bridge Remote Control
- Storage, Drawer - Helm
- Storage, Forward Bridge Access
- Table, Fiberglass w/Teak Insert
- Wet Bar w/Sink, Faucet, Stainless-Steel
- Handrail, Trash Receptacle w/Trash
- Chute & Storage Below - Starboard

---

## Cabin Features

---

- Blinds, Wood
- Carbon Monoxide Monitors
- Carpet, Deep-Pile Stain-Resistant w/Padding
- Carpet Runner, Interior (Sunbrella)
- Companionway Wall - Wood Paneling

- Curtains, Custom - Throughout
- Doors, Raised Panel - Wood
- Handrails, Elliptical Stainless Steel
- Lighting, 120V
- Lighting, 120V Xenon
- Lighting, 120V Indirect
- Lighting, 24V Xenon
- Outlet, 12V Accessory
- Outlets, 120V GFI Protected
- Outlets, Phone
- Outlets & Switch Plates - Satin Nickel Finish
- Pillows, Accent
- Vacuum System, Central - Single Inlet (Beam®)
- Wood Interior Package, Cherry or Dark Cherry

---

## Salon

---

- End Table
- Entertainment Center
- Stereo, Bose® Lifestyle 48 Surround Sound System w/DVD Player (Interfaced w/ Sirius Satellite Receiver), Acoustimass Speakers & Subwoofer Storage, Cabinet - CD
- TV, 32" Flatscreen LCD (120V) w/DVD/CD, Remote, Coax Outlet & Gain Control Panel
- Seating, Sofa (Ultraleather HP™)
- Seating, Sofa w/Storage Below (Ultraleather HP)

---

## Galley

---

- Coffeemaker, 120V (Krupps®)
- Countertop, Solid Surface w/Cutting Board & Sink w/Single-Lever Faucet
- Flooring, Wood
- Freezer w/Icemaker, 120V UnderCounter w/Stainless-Steel Front (Sub Zero®)
- Microwave/Convection Oven, 120V -Stainless-Steel Face
- Outlet, 12V Accessory
- Power Vent, 12V
- Refrigerator, 120V Under-Counter w/Stainless-Steel Front (Sub Zero)
- Storage, Cabinets - Lower
- Storage, Glass & Dish w/Wine Rack
- Stove, 240V Recessed Two-Burner w/Solid-Surface Cover (Kenyon®)
- Trash Receptacle - Slide-Out
- Wine Rack w/Custom Bottle Storage

---

## Dinette

---

- Flooring, Wood
- Seating, Curved (Ultraleather HP) w/Storage Below
- Storage, Bottle Racks
- Storage Cabinets w/Slide-Out Drawers &
- Glass Racks
- Table, Dinette w/High-Gloss Wood
- Surface, Sliding Base & Drawer
- Storage Cabinet Below

---

## Master Stateroom

---

- Bed, Queen-Size w/Innerspring
- Mattress, Pillows, Sheets,
- Coordinated Spread & Carpeted
- Storage Below w/Gas-Assisted Hatch
- Hanging Lockers (4) w/Lights & Shelves
- Entertainment Center- Bose Lifestyle 3-2-1, 2.1-Channel
- Home Entertainment System Includes: Bose Media Center, 2-Gemstone Speaker Arrays & Accoustimass Module- TV, 26" Flatscreen LCD
- Mirrored Privacy Door
- Night Stands (2) w/Drawer Storage Below
- Storage, Dresser w/Drawers & Lift-Top Vanity

---

## Master Head

---

- Bath Accessories, Polished Finish
- Door, Private - Access from Master Stateroom
- Flooring, Wood • Handrails, Elliptical Stainless Steel • Head, Large (VacuFlush®)
- Power Vent, 24V • Shower w/Seat, Shower Wand & Acrylic Door
- Storage, Medicine Cabinet - Mirrored
- Vanity w/Solid-Surface Countertop, Solid-Surface Sink w/Grohe® Faucet & Storage Below
- Shower w/Seat, Adjustable Shower Wand & Acrylic Door
- Storage, Medicine Cabinet - Mirrored Vanity w/Solid-Surface Countertop, Solid Surface
- Sink w/Grohe Faucet & Storage Below w/Trash Receptacle

---

## Guest Stateroom

---

- Beds, Upper & Lower Bunks w/Mattresses, Pillows, Sheets,
- Coordinated Spreads & Carpeted



- Storage Below (Lower Bunk)
- Hanging Locker w/Light
- Storage, Gunwale Cabinet
- Storage, Shelf Washer/Dryer Combo w/UpperStorage Cabinet

---

## Guest Head

---

- Bath Accessories - Towel Rings (2) & Bathroom Tissue Holder
- Flooring, Tile
- Handrails, Stainless Steel
- Head, Large (VacuFlush) - Electric
- Mirrored Privacy Door
- Robe Hook, Head Door
- Shower w/Seat, Adjustable Shower Wand & Shower Curtain
- Storage, Medicine Cabinet - Mirrored Vanity w/Solid-Surface Countertop, SolidSurface
- Sink w/Grohe® Faucet & Storage Below w/Trash Receptacle

---

## Control System

---

- Alarms, Bilge Temperature to Systems Monitor
- Alarms, High-Water - Bilge
- Bow Thruster, 24V
- Compass
- Emergency Engine Stop
- Emergency Start System - Engines
- Horn, Air - 24V w/Accumulator Tank
- Instrument Panels - Brushed Metal
- Instrumentation, Custom Sea Ray® Backlit w/Low-Glare Blue Night Lighting & Stainless-Steel Bezels [Includes: Engine Sync, Fuel (2), Oil Pressure (2), Tachometers w/LCD Hour meters, Voltmeters (2), Water Temperature (2)]
- Shift & Throttle Controls, Electronic
- Spotlight w/Dual Halogen Bulbs -Remote-Controlled (ACR®)
- Steering, Hydraulic - Power-Assisted
- Steering, Tilt Wheel
- Steering Wheel, Wood-Accent
- Switch Panel, Backlit - Brushed Metal
- Switches, Illuminated Weatherproof Rockers & Electronic Dimmer Control

---

## Electrical Equipment

---

- Batteries, 8-D w/Boxes (4) & Group 27 For Genset (1)

- Battery Charger/Converter, 120V/10 Amp/12V
- Battery Charger/Converter, 240V/50 Amp/24V
- Battery Charger Overcurrent Protection
- Battery Equalizer, 60 Amp (2)
- Battery Solenoid Switches, 12V (2), 24V (2)
- Inlet, Cable Television w/Cords
- Panel, Circuit Breaker - Remote
- Panel, DC Main Breaker
- Panel, Main Distribution - AC, Housed in an Aluminum Enclosure
- Panel, Main Distribution - DC, Housed in an Aluminum Enclosure
- Shore Power, Cablemaster (Glendinning) 240V/50 Amp w/50' Cord & Wireless Remote (Cablemaster Not Available w/220V/50 Cycle Shore Power)
- Transformer, Shore Power Isolation
- Wiring, Color-Coded & Labeled w/Chafe Protection

---

## Exclusions

---

Owner's personal belongings.

---

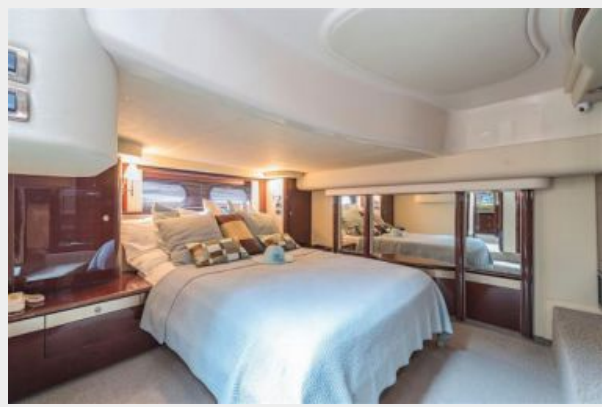
## Disclaimer

---

The Company offers the details of this vessel or yacht in good faith but cannot guarantee or warrant the accuracy of this information nor warrant the condition of the vessel. A buyer should instruct his representatives, agents, or his surveyors, to investigate such details as the buyer desires validated. This vessel or yacht is offered subject to prior sale, price change, or withdrawal without notice.

# PHOTOS







---

# CONTACTS

---

Andrey Shestakov, leading yacht broker of the sales department of Shestakov Yacht Sales Inc. Shestakov Yacht Sales Inc., the official representative of the Miami/Fort Lauderdale FL headquarters.

---

## Contact details

---

Email: [andrey@shestakovyachtsales.com](mailto:andrey@shestakovyachtsales.com)

Web: [shestakovyachtsales.com/en/](http://shestakovyachtsales.com/en/)

---

## Telephones

---

USA: +1(954)274-4435

---

## Office hours

---

Monday – Saturday: **9:00 - 21:00** EDT

Sunday: **closed**

---

## Address

---



Harbour Towne Marina, 850 NE 3rd St,  
STE 213, Dania, FL 33004