

## MAKARA — KNIGHT & CARVER



**Судостроитель:** KNIGHT & CARVER

**Год постройки:** 2002

**Модель:** Моторная яхта

**Цена:** ЦЕНА ЯХТЫ ПО ЗАПРОСУ

**Местонахождение:** United States

**Длина общая:** 70' 0" (21.34m)

**Ширина:** 20' 4" (6.20m)

**Макс. осадка:** 5' 6" (1.68m)

**Крейс. скорость:** 19 Kts. (22 MPH)

**Макс. скорость:** 25 Kts. (29 MPH)

Купить **MAKARA — KNIGHT & CARVER** а также выбрать подходящую вам яхту из нашего каталога яхт вам поможет опытный яхтенный брокер Андрей Шестаков. На сегодняшний день компания **Shestakov Yacht Sales Inc.** имеет большое количество яхт в собственном списке продаж, а также тесно сотрудничает со всеми крупными яхтенными производителями по всему миру.

Для того чтобы купить яхту **MAKARA — KNIGHT & CARVER** а также проконсультироваться по любому вопросу связанному с покупкой, продажей, чартером яхт позвоните по телефону **+7(918)465-66-44**.

# ОГЛАВЛЕНИЕ

ОГЛАВЛЕНИЕ	2
ХАРАКТЕРИСТИКИ	6
Обзор	6
Основная информация	6
Размеры	6
Скорость, вместимость и масса	7
Размещение	7
Корпус и палуба	7
Информация о двигателе	7
ПОДРОБНОЕ ОПИСАНИЕ	8
Salon	8
Galley	8
Dinette And Pilothouse	8
Full Beam Master Stateroom	8
VIP Guest Stateroom	9
Guest Stateroom Port	9
Crew Accommodations	9
Laundry Room	9
Flybridge Features	10
Electronics and Navigational Equipment	10
Engine and Mechanical	10
Deck Equipment	11
Remarks	11
Sea Trial Report 8/2015	11
Исключения	12
Отказ от ответственности	12
ФОТОГРАФИИ	13
Profile	13

Profile	13
Profile	13
Profile	13
Salon	13
Salon	13
Salon	14
Salon	14
Salon	14
Salon	14
Salon	14
Salon	14
Galley	14
Galley	15
Dinette	15
Dinette	15
Dinette	15
Dinette	15
Pilothouse	15
Lower Helm	16
Master Stateroom	16
Master Stateroom	16
Master Stateroom	16
Master Stateroom	16
Master Stateroom	16
Master Stateroom	16
Master Stateroom	17
Master Head	17
Master Head	17
Master Head	17
Vip Stateroom	17
Vip Stateroom	17

Vip Head	18
Vip Head	18
Guest Stateroom	18
Guest Stateroom	18
Guest Head	19
Guest Head	19
Companionway	19
Laundry	19
Foredeck	20
Foredeck	20
Foredeck	20
Foredeck	20
Foredeck	20
Foredeck	20
Foredeck	20
Profile	21
Windlass	21
Flybridge Helm	21
Flybridge Helm	21
Helm Seating	21
Flybridge	21
Flybridge	22
Flybridge	22
Flybridge	22
Flybridge	22
Flybridge	22
Aft Deck	22
Flybridge Bar	23
Aft Deck	23
Aft Deck	23

---

Aft Deck	23
Aft Deck	23
Aft Deck	23
Aft Deck	24
Aft Deck	24
Engine Room	24
Engine Room	24
Engine Room	24
Engine Room	24
Engine Room	25
Engine Room	25
Engine Room	25
Engine Room	25
КОНТАКТЫ	26
Контактная информация	26
Телефоны	26
Время работы	26
Адрес	26

# ХАРАКТЕРИСТИКИ

## Обзор

Makara is an exclusive custom built motor yacht, built by the highly regarded Knight & Carver shipyard outside San Diego, California. Her interior arrangement will comfortably accommodate up to six guests in three generous en suite cabins, including full-beam master. Separate crew quarters aft provide the utmost privacy for you and your guests. This tastefully appointed yacht offers luxurious accommodations, excellent dining opportunities and a range of relaxation areas. Makara features twin rear stairs, covered aft deck, large main salon, fully-equipped galley with granite counters, pilothouse with large seating area, huge flybridge with upper helm station and plenty of open & covered space, multiple watertight doors and a laundry room. Makara has cruised the Pacific, through the Caribbean and as far north as Battle Harbor, Labrador. The spacious interior rivals other manufacturers 80 footers. Easy to see in Fort Lauderdale. In August, 2015, Makara received fresh bottom paint, prop and shaft reconditioning, and new shaft spurs. She is up to date on the 5000 hour Caterpillar engine services and freshly detailed. **MOTIVATED SELLER RECENT PRICE REDUCTION \$5,000 BROKER BONUS**

## Основная информация

**Тип судна:** Моторная яхта

**Подкатегория:** Flybridge

**Модельный год:** 2002

**Год постройки:** 2002

**Страна:** United States

**Верх:** Hardtop

**Открытая палуба мостика:** Да

## Размеры

**Длина общая:** 70' 0" (21.34m)

**Ширина:** 20' 4" (6.20m)

**Макс. осадка:** 5' 6" (1.68m)

## Скорость, вместимость и масса

**Крейс. скорость:** 19 Kts. (22 MPH)

**Крейсерская скорость поворота:** 1900 Kts.

**Макс. скорость:** 25 Kts. (29 MPH)

**Макс. скорость поворота:** 2330 Kts.

**Вместимость воды:** 500 Gallons

**Вместимость сточного бака:** 200 Gallons

**Объем топливного бака:** 2400 Gallons

**Расход топлива:** 83 Gallons

## Размещение

**Всего кают:** 3

**Спальные места:** 6

**Всего ком. состава:** 3

**Каюты экипажа:** 1

**Койки экипажа:** 1

**Спальных мест экипажа:** 2

**Комм. состав экипажа:** 1

## Корпус и палуба

**Материал корпуса:** Fiberglass

**Материал палубы:** Fiberglass

**Цвет корпуса:** White

**Отделка корпуса:** Polyethylene

**Дизайнер корпуса:** Knight and Carver

## Информация о двигателе

**Двигатели:** 2

**Производитель:** Caterpillar

**Модель:** 3412

**Тип двигателя:** Inboard

**Тип топлива:** Diesel

---

# ПОДРОБНОЕ ОПИСАНИЕ

---

## Salon

---

The main deck is accessed through three Freeman watertight sliding doors - one on the aft deck and two on either the port or starboard side from full walkaround decks. MAKARA's interior features a stunning Canadian cherry wood interior in a satin finish, open layout, and all the comforts of a home on the water. • Large L-shaped settee with storage underneath for dry provisions and spare five-blade propellers • Large upholstered wicker chairs • Hi-Lo Blue Water cherry wood (high gloss) table with compass rose • Samsung HDLD 37" TV on electric lift • Bar with U-line fridge/freezer combo, custom liquor and wine storage drawers, custom glass storage • Logitech remote for AV system • Sony 300-disc CD changer • Denon stereo receiver • Boston acoustics speakers in salon and pilothouse overhead • Built in sub-woofer • Sony VCR • Toshiba DVD player • Satellite television receivers • Storage drawers • Wool carpeting by Starke • Concealed rope lighting above and below • (2) 16,000 BTU Cruisair Air air conditioners

## Galley

---

• Carpet section in galley • U-shaped galley with granite counters, buffet open to salon • Kohler sink with in Sinkerator • Filtered drinking water tap • Kitchen Aid glass top 2 burner electric stove • Exhaust fan • Sharp microwave/convection oven • Sub-zero refrigerator with 2 freezer drawers and icemaker • Sub-zero 2 drawer freezer unit under buffet • GE dishwasher • Kitchen aid trash compactor • Generous storage in cabinets and drawers • 12,000 BTU Cruisair air conditioner

## Dinette And Pilothouse

---

• U-shaped dinette for 6 adults with storage underneath (ability to rotate 2 helm chairs for additional dining) • Large cherry table with cover • Three large chart drawers and 2 file drawers beneath dinette

## Full Beam Master Stateroom

---

The owner/guest accommodations are accessed (to starboard) down an illuminated companionway. This area is satin finished Canadian cherry wood and attractive wall covering. All mattresses are custom pillow top of the highest quality. • Full queen-size berth with drawer storage underneath • Comforter/pillow shams • Mirrored headboard • Mirror at doorway • (2) night stands with satin finish lights • Additional reading lights in overhead • Samsung 42" TV behind pocket door with Satellite/DVD/VCR • Desk with stool and drawer storage below and cabinet storage behind • Sitting/reading chair (stool can be used as ottoman) • Hanging locker to starboard • Walk-in closet to port with access/escape to engine room • Bank of drawers to port with unique laundry bins underneath • Ensuite head with pocket door entry • Large shower with



seat, glass door and portlight • Shellstone tile counter with 2 sinks and satin fixtures • Separate toilet compartment with pocket door and Headhunter Royal Flush head • Towel rack • Halogen lighting • Illuminated shaving/make-up mirror • Cruise Air (2) 12,000 BTU air conditioning port and starboard • 4 Portlights with shades • Valances with concealed accent rope lighting port and starboard

---

## VIP Guest Stateroom

---

• Located forward with center line queen size berth that lifts hydraulically to reveal storage beneath • New comforter • 37" flatscreen TV • Drawers and 2 hanging lockers and cabinets • Cruise Air 12,000 BTU air conditioner • Halogen lighting, accent rope lighting • Deck hatch to fore deck with screen and sun shade • Ensuite head with shower with glass door • Sink, counter and generous storage in cabinets behind mirrors • Mirrored overhead • Illuminated shaving/makeup mirror

---

## Guest Stateroom Port

---

• Twin single berths with drawer storage underneath • Cabinets and bookshelf on outboard side • Night stand in between berths with drawers underneath • Hanging locker • Halogen lighting and reading lights with dimmers • Ensuite head with shower and glass door • Headhunter Royal Flush head • Sink, counter and storage in cabinets behind mirrors • Mirrored overhead • Illuminated shaving/makeup mirror • Cruisair 12,000 BTU air conditioner

---

## Crew Accommodations

---

The crew cabin is accessed through the transom door, furthest aft. It features a double berth with an aftwardship bunk above. Also included a "mini galley" and ensuite head and shower • Varnished cherry interior • Hanging locker • Desk and stool • Microwave • Refrigerator • 12,000 BTU Cruisair air conditioner • 15" Flat screen TV • Satellite receiver • Stereo CD/DVD changer and VCR • Cordless multi-line phone • VHF radio • Separate head and shower • Large hatch over shower for underway access • Towel storage cabinet • Medicine cabinet storage • Headhunter Royal Flush toilet • Pocket door for head • Foul weather gear locker • Drawers and cabinet storage • Book shelf storage • Wall sconces • Halogen lighting with dimmers • Reading lights • Freeman watertight transom door • Access to engine room • Portlight Laundry Room

---

## Laundry Room

---

• Whirlpool stackable washer dryer • Generous shelf storage • Folding door with light switch • Linen storage in concealed drawers across hall • Storage below companionway stairs

## Flybridge Features

American Marine of Stuart, FL added the hard top and extended aft section and bridge out 4 feet to gain more space and cover aft deck seating directly below. • Hard top w/lighting (3 colors) • (2) Teak triangle tables • Seating to port & starboard • High gloss teak counter top and bar to port w/fridge below • Stereo speakers • 3-sided Strata glass enclosure • Drop down 37" TV Electronics and

## Electronics and Navigational Equipment

The electronics layout in the pilothouse and on the flybridge are nearly identical in both equipment and layout. The twin powerful CPU's and 4 screens offer tremendous flexibility in customizing your preferences from Engine Room surveillance to dual charting or weatherfax. Main Helm Electronics: • Raytheon RLI80C 10KW radar/depth/plotter with 6" open array • Raytheon RL70C 4KW radar with 24" closed array • Raytheon depth sounder • Raytheon wind indicator • Raytheon speed indicator • Lleicia GPS • Furuno NX-300 Navtex receiver • Standard Horizon VHF • Icom RT-710 SSB with Pactor modem • 1-Dell workstation 340 CPU's • Radio frequency keyboards and mice • (2) 15" Flatscreen monitors • Custom ship systems and alarm monitor • Ritchie powerdamp illuminated compass • Simrad AP200 autopilot head • Fog Mate automatic fog signal • Panasonic 4-line base phone with 4 handsets • HP V40 scanner/fax/copier • Seatel Wavecall satellite phone system with Satspeed compression software for • e-mail access. (Not currently in service-needsto be re-activated) • KVH 24" Satellite television system Flybridge Electronics: • Raytheon RL80C radar/depth/plotter • Simrad AP200 autopilot head • Simrad AP200 autopilot remote port • Standard Horizon VHF radio • Raytheon depth • Raytheon speed • Raytheon wind • Leicia GPS • Custom ships systems and alarm monitor • Ritchie powerdamp illuminated compass

## Engine and Mechanical

• Deep sump oil pans and full engine room gauges • Underwater exhaust system with bypass • ZF BW190 2.03 to 1 gears with trolling valves • Twin disc EC200 electronic controls pilothouse and flybridge with wired remote • 3 1/2 Inch Aquamet 22 propeller shafts and Strong Seal shaft seals • Twin Caterpillar 3412 diesels 1400HP with 5500 hours • 25kw Northern Lights Generator with 2825 hours and additional 32kw Westerbeke generator with 6645 hours. Both with sound shields and water separator silent exhaust system • Naiad 302 stabilizers with Multisea 2000 control • Wesmar electric bow thruster • Sea recovery 1500 GPD watermaker • Hamann Wassertechnik super mini waste treatment system • Fuel transfer system with Oberdorfer 240V/ 1HP pump 20+ gal per minute • Racor 1000 fuel filters • Orberdorfer 240V/ 1HP oil change pump with quick disconnect hydraulic fittings on all equipment • 2 Sea-fire FM-200 bottles • Dry chemical and (2) CO2 handheld fire extinguishers • Headhunter Mach 5 freshwater pump • Charles Industries ISO-boost transformer • Trace 2500 watt inverter • 2-Newmar phase three battery chargers • Delta "T" ventilation system • 2-Surveillance cameras, monitors in FB and PH • A/C switch panel • Toolbox with full complement of hand tools • Air compressor • Hynautic power

steering with 2 pumps and 2 cyl • Watertight freeman door with viewing port to crews quarters • Watertight freeman door to master walk in • High output florescent light fixtures • Spare Veem Star C 5 blade props with Prop Smith puller • Spare engine and generator parts

## Deck Equipment

---

MAKARA has a very traditional, clean look with all deck spaces being free of cleats and other obstructions. Line handling is easy with her full walk-around decks featuring some of the finest stainless steel fittings with the absence of high maintenance varnish. • Bruce 110 lb. anchor on custom bow roller • 300 Feet 7/16" G4 chain • Anchoring bridle • Bow staff (removable) • Maxwell 1500 windlass with remote and helm controls • 2015 DSL AB Oceanus Tender with a 60 Yamaha four stroke engine • Spare FX125 fortress anchor and spare Danforth Anchor • (2) 300' spare anchor rodes • Full bulwarks main deck with custom hawse pipes • Opening bulwark doors for boarding port and starboard • Mooring bits for bowlines • Generous line storage port and starboard with line hooks • Storage for fenders • Large trunk cabin • Custom storage for Marquipt Tide Ride and boarding ladder • Generous storage for cleaning supplies and oil • Built in wet spot plus water softener • Bow seat with cushions and cover with watertight storage beneath • Full privacy/sun screens for windshields and side windows • Freeman pilothouse doors port and starboard (dog seal) • Freeman sliding aft salon door (dog seal) • (6) Sliding windows • Aft deck ladder to flybridge with teak steps • Cantelupi decklights • Nautical structures EZ 1500 davit with remote • Winslow 8-person life raft in hard case • (2) Stidd flybridge chairs and one Stidd loveseat • Teak decking in flybridge • Storage lockers in flybridge with sink • Staple rail on swim step • Large custom swim ladder • Teak aft deck, swimstep and steps • ACR searchlight with 2 controls • Buell dual trumpet horns with expansion tank • Hella stainless navigation lights • Split U-shaped seating in flybridge with cushions • Aft deck seating with cushions • Large aft deck storage/shore power compartment • Charles Industries Smart Y • 80 Feet of 100 amp shore powercord on Glendinning reel • 80 Feet of TV cable and phone cord on Glendinning reel • 50 Foot, 50-amp shore power extension cord

## Remarks

---

Makara is a custom built yacht of superior quality and sea keeping capabilities. She was built and commissioned by the highly regarded Knight & Carver shipyard outside of San Diego, California. Her interior arrangement is ideal, with 3 generous cabins (full beam master) and separate crew quarters aft. Makara underwent considerable improvements in 2010, including new hard top, soft goods, TV's, varnished tables, and new generator in 2011. In 2007 she was re-awlgripped at St. Augustine Shipworks. Makara has cruised the Pacific, through the Caribbean, and as far north as Battle Harbor, Labrador. It is truly a pleasure to show this exceptional vessel. She is located in Fort Lauderdale.

## Sea Trial Report 8/2015

---

RPM	SPEED KNOTS	GPH 800	7.7	8 900	
8.6	11 1000	9.5	15 1100	10.2	20
1200	11.5	26 1300	11.8	32 1400	
12.4	40 1500	13.1	48 1600	14.1	57
1700	15.5	65 1800	17.1	74 1900	
18.7	83 2000	20.4	92 2100	21.7	102
2200	22.8	114 2300	24.4	129 2330	
24.5	131 • Two way speed and GPH averages north/south off Port Everglades • Sea condition was one foot with five knot winds out of the east • Four people on board, 600 gallons fuel, full water, no tender				

## Исключения

---

При продаже яхты исключаются личные вещи владельца.

## Отказ от ответственности

---

Компания предоставляет описание судна или яхты добросовестно, но не может гарантировать точность этой информации, а также не ручается за техническое состояние. Покупатель должен проинструктировать своих агентов или оценщиков исследовать представленную информацию более подробно, по собственному желанию. Продажа судна или яхты, изменение цены или снятие с продажи будет происходить без предварительного уведомления.

# ФОТОГРАФИИ

Profile



Profile



Profile



Profile



Salon



Salon





Salon



Salon



Salon



Salon



Salon



Galley



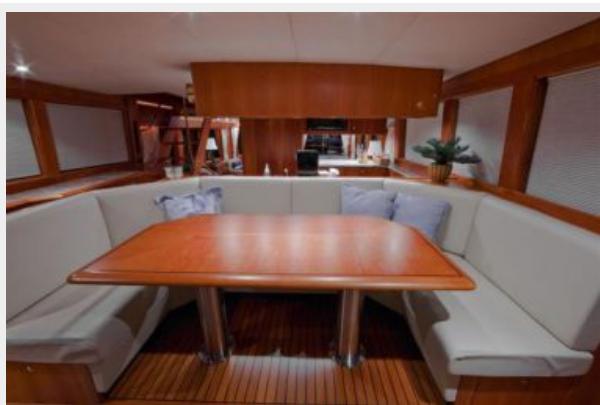
**Galley**



**Dinette**



**Dinette**



**Dinette**



**Dinette**



**Pilothouse**





**Lower Helm**



**Master Stateroom**



**Master Stateroom**



**Master Stateroom**



**Master Stateroom**



**Master Stateroom**





**Master Stateroom**



**Master Head**



**Master Head**



**Master Head**



**Vip Stateroom**



**Vip Stateroom**



Vip Head



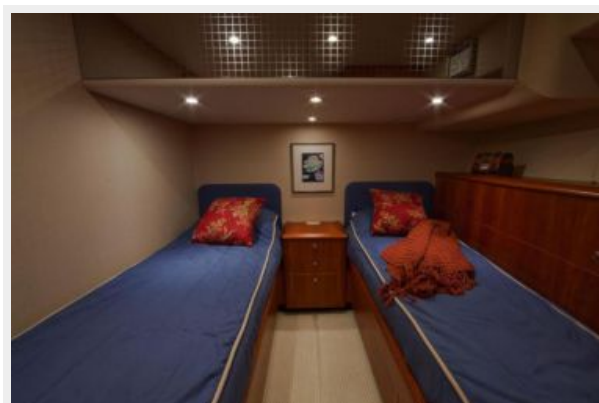
Vip Head



Guest Stateroom



Guest Stateroom



**Guest Head**



**Guest Head**



**Companionway**



**Laundry**





**Foredeck**



**Foredeck**



**Foredeck**



**Foredeck**



**Foredeck**



**Foredeck**



**Windlass**



**Profile**



**Flybridge Helm**



**Flybridge Helm**



**Helm Seating**



**Flybridge**





**Flybridge**



**Flybridge**



**Flybridge**



**Flybridge**



**Flybridge**



**Aft Deck**



**Flybridge Bar**



**Aft Deck**



**Aft Deck**



**Aft Deck**



**Aft Deck**



**Aft Deck**





**Aft Deck**



**Aft Deck**



**Engine Room**



**Engine Room**



**Engine Room**



**Engine Room**





**Engine Room**



**Engine Room**



**Engine Room**



**Engine Room**



# КОНТАКТЫ

---

Андрей Шестаков (Andrey Shestakov) – ведущий яхтенный брокер отдела продаж яхт и судов компании Shestakov Yacht Sales Inc. Официальный представитель Shestakov Yacht Sales Inc. для русскоговорящих клиентов в центральном офисе компании в Майами/Форт Лодердейл/Флорида/США.

## Контактная информация

---

Email: [andrey@shestakovyachtsales.com](mailto:andrey@shestakovyachtsales.com)

Web: [shestakovyachtsales.com](http://shestakovyachtsales.com)

## Телефоны

---

Краснодарский край: **+7(918)465-66-44**

США, Майами, Флорида: **+1(954)274-4435**

## Время работы

---

Понедельник – Суббота: **9:00 - 21:00**  
EDT

Воскресенье: **Закрето**

## Адрес

---



Harbour Towne Marina, 850 NE 3rd St,  
STE 213, Dania, FL 33004