

## JUST RIGHT — CAROLINA CLASSIC



**Builder:** CAROLINA CLASSIC

**Year Built:** 2000

**Model:** Sport Fisherman

**Price:** PRICE ON APPLICATION

**Location:** United States

**LOA:** 25' 0" (7.62m)

**Beam:** 8' 6" (2.59m)

**Min Draft:** 2' 6" (0.76m)

**Cruise Speed:** 25 Kts. (29 MPH)

**Max Speed:** 35 Kts. (40 MPH)

Our experienced yacht broker, Andrey Shestakov, will help you choose and buy a yacht that best suits your needs **Just Right — CAROLINA CLASSIC** from our catalogue. Presently, at Shestakov Yacht Sales Inc., we have a wide variety of yachts available on our sale's list. We also work in close contact with all the big yacht manufacturers from all over the world.

If you would like to buy a yacht **Just Right — CAROLINA CLASSIC** or would like help answering any questions concerning purchasing, selling or chartering a yacht, please call **+1(954)274-4435**

---

# TABLE OF CONTENTS

---

TABLE OF CONTENTS	2
SPECIFICATIONS	3
Overview	3
Basic Information	3
Dimensions	3
Speed, Capacities and Weight	3
Accommodations	3
Hull and Deck Information	4
Engine Information	4
DETAILED INFORMATION	5
Engine Svc, General Care & Trailer	5
Disclaimer	5
Exclusions	5
Disclaimer	5
PHOTOS	6
CONTACTS	12
Contact details	12
Telephones	12
Office hours	12
Address	12

---

# SPECIFICATIONS

---

## Overview

---

This nicely cared for 25 Carolina Classic, has 85 hrs on a freshly rebuilt (Summer of '14) Volvo Penta 8.1 Gi (closed loop cooled, with a fresh water flush attachment for the heat exchanger and exhaust system). Risers and Manifolds new also. Factory hardtop with the moulded in radiobox and 2 spreader lights, 4 sided helm enclosure in great condition She features a port side tackle storage cabinet with a cushion top, and 2 pedestal chairs. Fresh AND Raw water washdown, transom fishbox, Lee JR Wishbone outriggers, Good electronics including Radar and a new Garmin touchscreen. 3 axle Alum Bunk Trailer incl.

## Basic Information

---

**Category:** Sport Fisherman

**Model Year:** 2000

**Year Built:** 2000

**Country:** United States

## Dimensions

---

**LOA:** 25' 0" (7.62m)

**Beam:** 8' 6" (2.59m)

**Min Draft:** 2' 6" (0.76m)

**MFG Length:** 25' 2" (7.67m)

## Speed, Capacities and Weight

---

**Cruise Speed:** 25 Kts. (29 MPH)

**Max Speed:** 35 Kts. (40 MPH)

**Displacement:** 8500 Pounds

**Water Capacity:** 23 Gallons

**Fuel Capacity:** 165 Gallons

## Accommodations

---

**Total Cabins:** 1

**Total Heads:** 1

---

## Hull and Deck Information

---

**Hull Material:** Fiberglass

## Engine Information

---

**Engines:** 1

**Manufacturer:** Volvo Penta

**Model:** 8.1 Gi, closed Lopp Cooling

**Engine Type:** Inboard

**Fuel Type:** Gas

---

## DETAILED INFORMATION

---

### Engine Svc, General Care & Trailer

---

The 8.1gi closed loop cooled Volvo Penta was rebuilt in the Summer of '14. There are less than 100 hrs since the rebuild.

This 25 Carolina Classic is usually kept inside of a dry storage building, and is fork lifted in and out of the water. The boat is kept in a clean, tidy fashion and is a pleasure to see.

The triple axle Loadmaster Aluminum I-beam bunk trailer is also stored on site. The trailer has disk brakes on one axle and LED lights.

### Disclaimer

---

While we attempt to display current and accurate data, this listing may not reflect the most recent transactions or may contain occasional data entry errors. Selling agent makes no warranties, express or implied, regarding the content or availability of the products described herein. All inventory listed is subject to availability and prior sale. Please consult selling agent for details. Prices are quoted for the USA only and may not include transportation, taxes, or other applicable charges. Photographs may be representative only and may vary somewhat from the actual items offered for sale. We will not be responsible for inaccurate data obtained from our site. Please check with your local dealer to ensure that you have the latest information available. Information on this web site could include technical inaccuracies or typographical errors. Changes may be periodically made to the information or the products herein. Questions or comments regarding these policies may be directed to website hosting agent.

### Exclusions

---

Owner's personal belongings.

### Disclaimer

---

The Company offers the details of this vessel or yacht in good faith but cannot guarantee or warrant the accuracy of this information nor warrant the condition of the vessel. A buyer should instruct his representatives, agents, or his surveyors, to investigate such details as the buyer desires validated. This vessel or yacht is offered subject to prior sale, price change, or withdrawal without notice.

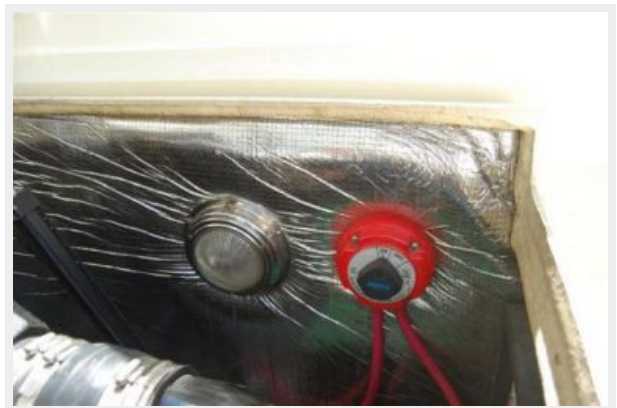
# PHOTOS















---

# CONTACTS

---

Andrey Shestakov, leading yacht broker of the sales department of Shestakov Yacht Sales Inc. Shestakov Yacht Sales Inc., the official representative of the Miami/Fort Lauderdale FL headquarters.

---

## Contact details

---

Email: [andrey@shestakovyachtsales.com](mailto:andrey@shestakovyachtsales.com)

Web: [shestakovyachtsales.com/en/](http://shestakovyachtsales.com/en/)

---

## Telephones

---

USA: +1(954)274-4435

---

## Office hours

---

Monday – Saturday: **9:00 - 21:00** EDT

Sunday: **closed**

---

## Address

---



Harbour Towne Marina, 850 NE 3rd St,  
STE 213, Dania, FL 33004