

## OLI — FERRETTI



**Builder:** FERRETTI

**Year Built:** 2013

**Model:** Motor Yacht

**Price:** PRICE ON APPLICATION

**Location:** United States

**LOA:** 80' 0" (24.38m)

**Beam:** 20' 7" (6.27m)

**Max Draft:** 6' 2" (1.88m)

**Cruise Speed:** 28 Kts. (32 MPH)

**Max Speed:** 32 Kts. (37 MPH)

Our experienced yacht broker, Andrey Shestakov, will help you choose and buy a yacht that best suits your needs **OLI — FERRETTI** from our catalogue. Presently, at Shestakov Yacht Sales Inc., we have a wide variety of yachts available on our sale's list. We also work in close contact with all the big yacht manufacturers from all over the world.

If you would like to buy a yacht **OLI — FERRETTI** or would like help answering any questions concerning purchasing, selling or chartering a yacht, please call **+1(954)274-4435**

# TABLE OF CONTENTS

---

TABLE OF CONTENTS	2
SPECIFICATIONS	4
Overview	4
Basic Information	4
Dimensions	4
Speed, Capacities and Weight	5
Accommodations	5
Hull and Deck Information	5
Engine Information	5
DETAILED INFORMATION	6
Introduction	6
Lower Helm	6
Upper Helm	6
Deck/Hull	6
Galley	7
Salon	7
Master Stateroom	7
Twin, Guest, and VIP Staterooms	7
Fly Bridge	8
Engine Room	8
Garage/Beach Club	8
Crew	8
Exclusions	8
Disclaimer	8
PHOTOS	10
CONTACTS	21
Contact details	21
Telephones	21

---

Office hours	21
Address	21

---

---

# SPECIFICATIONS

---

## Overview

---

**PRELIMINARY SPECIFICATIONS - MORE INFORMATION TO FOLLOW** A successful collaboration between architect Gianni Zuccon from Studio Zuccon International Project, AYT - Advanced Yacht Technology, the Group's naval research and design centre and the team of architects and designers of Ferretti Group's Centro Stile, allows for the shipyard to continue introducing breathtaking new models, including this new Ferretti 800. With this new model, the shipyard proves that it continues to successfully revamp its range, combining Ferretti Yachts' original style with a cutting edge take on space planning and design. The resulting yacht features well proportioned interior spaces and a layout that is simply characteristic of larger mega-yachts. These features, combined with a prominent external line and exceptionally lit interiors provide nothing short of an elegant and unforgettable experience on the water. The 800's external profile incorporates a rich bronze color specially selected for the dome and large glazed surfaces that are quite graphic in their design. A four-cabin layout provides ample accommodations for eight with large master stateroom and two VIP cabins. Sweeping views of the water and a raised helm station allow for great visibility while navigating. Two large open view windows in the master cabin have been elongated and two large porthole windows, which can be opened for cross-ventilation, have been fitted into the guest area to enhance the open-air feeling on board.

## Basic Information

---

**Category:** Motor Yacht

**Sub Category:** Flybridge

**Model Year:** 2013

**Year Built:** 2013

**Country:** United States

**Vessel Top:** Hardtop

**Fly Bridge:** Yes

**Cockpit:** Yes

## Dimensions

---

**LOA:** 80' 0" (24.38m)

**Beam:** 20' 7" (6.27m)

**Max Draft:** 6' 2" (1.88m)

---

## Speed, Capacities and Weight

---

**Cruise Speed:** 28 Kts. (32 MPH)

**Max Speed:** 32 Kts. (37 MPH)

**Displacement:** 167392 Pounds

**Water Capacity:** 349 Gallons

**Holding Tank:** 87 Gallons

**Fuel Capacity:** 1783 Gallons

---

## Accommodations

---

**Total Cabins:** 4

**Total Berths:** 5

**Total Heads:** 4

**Crew Cabin:** 2

**Crew Berths:** 4

**Crew Heads:** 2

---

## Hull and Deck Information

---

**Hull Material:** GRP

---

## Engine Information

---

**Engines:** 2

**Manufacturer:** MTU

**Model:** 12V 2000 M94

**Engine Type:** Inboard

**Fuel Type:** Diesel

---

# DETAILED INFORMATION

---

## Introduction

---

Oli is a gorgeous, like-new Ferretti with only 400 hours. She has a lovely, light, contemporary interior with four owner staterooms all with en suite and crew accommodations for four. She has a convenient day head on the main deck. She features Gyro Stabilizers, a 240 gpd water maker, and boasts top of the line electronics. Save thousands on new with no wait. Sure to impress! Call today!

## Lower Helm

---

- 3 Masters LCD Monitors M17-4IG
- 2 Diesel Center Engine Monitors
- Furuno Navnet 3D Control
- Urania Compass
- Bow and Stern thruster controls
- ZF Digital Throttles
- Rudder Indicator
- Furuno RD-33
- Furuno Navpilot
- 2 Gyro Stabilizer controls
- Quick CHC 1202M Chain counter
- Furuno FM-4721

## Upper Helm

---

- Furuno Navnet 3D
- Rudder Indicator
- Furuno RD-33 Display
- Furuno Navpilot
- ITT Tabsco Searchlight Control
- Quick Chain Counter CHC 1202M
- Bow and Stern Thruster
- VHF (Furuno)
- ZF Digital Throttle

## Deck/Hull

---

- Raritan Icemaker - Aft Deck

- 32" Sunbrite outdoor TV - Aft Deck
- Bow and stern thrusters and docking station
- Bow sunpad
- Bow sofa
- (4) underwater lights under spoiler

---

## Galley

---

- Miele Convection oven
- Bosch 4 burner stove
- GE side-by-side refrigerator
- Miele "Futura Dimension" Refrigerator
- Quarzite marble

---

## Salon

---

- Gorgeous walnut and maple soles throughout the salon, main helm, and galley
- Elm wood furniture throughout
- Luxurious Nuvola Ostrca leather sofas and dining chairs
- LED lights throughout
- 42" Samsung Flatscreen TV with lifting device
- Directv TV throughout the yacht
- Bose sound system with docking station
- 2 KVH HD7
- Blueray DVD player
- DAY HEAD

---

## Master Stateroom

---

- 32" Samsung TV
- Direct TV
- Bose sound and docking
- Owner safe

---

## Twin, Guest, and VIP Staterooms

---

- Sony Fusion Sound system
- 22" Samsung TV in each room
- Direct TV
- Sliding Twin beds in Guest Stateroom

- Carpet in staterooms

---

## Fly Bridge

---

- 32" Sunbrite outdoor TV
- Bose surround sound system
- JL Audio Speakers
- Grill
- Refrigerator
- Besenzoni Davit with 400 kg max
- Teak deck
- Hard top w/ Retractable Sunroof

---

## Engine Room

---

- Engines MTU's 2094 Starboard 536 Hours / Port 534 (9/1/15)
- Bow and Stern Thrusters
- Generator hours Starboard 740 hours / Port 731 hours (9/1/15)
- Water maker 44 hours at 240 gal per day
- 2 Mitsubishi Gyro Stabilizers
- Monitoring system for stabilizers

---

## Garage/Beach Club

---

Williams Tender - Turbojet 285

---

## Crew

---

- Stackable washer and dryer
- 2 stateroom and sleeps 4
- 2 heads
- 22" Toshiba TV in one crew quarters

---

## Exclusions

---

Owner's personal belongings.

---

## Disclaimer

---



The Company offers the details of this vessel or yacht in good faith but cannot guarantee or warrant the accuracy of this information nor warrant the condition of the vessel. A buyer should instruct his representatives, agents, or his surveyors, to investigate such details as the buyer desires validated. This vessel or yacht is offered subject to prior sale, price change, or withdrawal without notice.

# PHOTOS

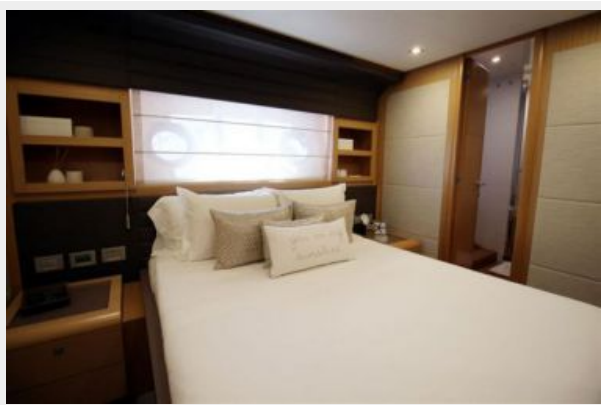










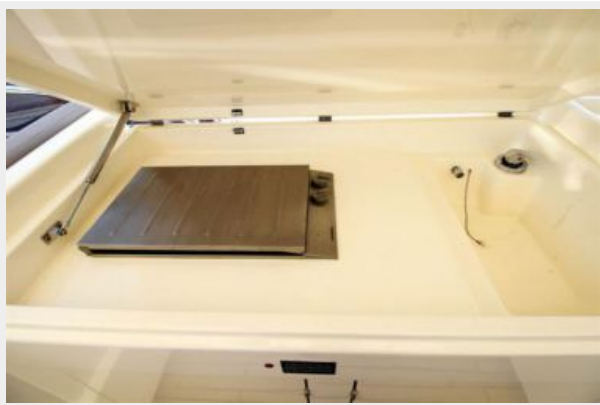




















---

# CONTACTS

---

Andrey Shestakov, leading yacht broker of the sales department of Shestakov Yacht Sales Inc. Shestakov Yacht Sales Inc., the official representative of the Miami/Fort Lauderdale FL headquarters.

---

## Contact details

---

Email: [andrey@shestakovyachtsales.com](mailto:andrey@shestakovyachtsales.com)

Web: [shestakovyachtsales.com/en/](http://shestakovyachtsales.com/en/)

---

## Telephones

---

USA: +1(954)274-4435

---

## Office hours

---

Monday – Saturday: **9:00 - 21:00** EDT

Sunday: **closed**

---

## Address

---



Harbour Towne Marina, 850 NE 3rd St,  
STE 213, Dania, FL 33004