

MIBOWT — SUNSEEKER



Builder: SUNSEEKER

Year Built: 2012

Model: Motor Yacht

Price: PRICE ON APPLICATION

Location: France

LOA: 74' 2" (22.60m)

Beam: 18' 10" (5.74m)

Min Draft: 5' 5" (1.63m)

Max Draft: 5' 5" (1.63m)

Max Speed: 33 Kts. (38 MPH)

Our experienced yacht broker, Andrey Shestakov, will help you choose and buy a yacht that best suits your needs **MIBOWT — SUNSEEKER** from our catalogue. Presently, at Shestakov Yacht Sales Inc., we have a wide variety of yachts available on our sale's list. We also work in close contact with all the big yacht manufacturers from all over the world.

If you would like to buy a yacht **MIBOWT — SUNSEEKER** or would like help answering any questions concerning purchasing, selling or chartering a yacht, please call **+1(954)274-4435**

TABLE OF CONTENTS

TABLE OF CONTENTS	2
SPECIFICATIONS	3
Overview	3
Basic Information	3
Dimensions	3
Speed, Capacities and Weight	3
Accommodations	3
Hull and Deck Information	3
Engine Information	4
DETAILED INFORMATION	5
Accommodation	5
Additional	5
Vessel Description	6
Exclusions	6
Disclaimer	6
PHOTOS	7
CONTACTS	13
Contact details	13
Telephones	13
Office hours	13
Address	13

SPECIFICATIONS

Overview

The Sunseeker Manhattan 73 "MIBOWT" is a fantastic example of this very popular Sunseeker model. This vessel is a 2012 model, offering 4 spacious cabins and large saloon and flybridge spaces. She offers an abundance of additional extras to make your time aboard comfortable and fun. She is fully serviced and ready to go for the season. Maintained by a meticulous crew, "MIBOWT" is ready to view at any time and should really be seen to be appreciated. Part exchanges considered. Please contact us for more information.

Basic Information

Category: Motor Yacht

Model Year: 2012

Year Built: 2012

Country: France

Dimensions

LOA: 74' 2" (22.60m)

Beam: 18' 10" (5.74m)

Min Draft: 5' 5" (1.63m)

Max Draft: 5' 5" (1.63m)

Speed, Capacities and Weight

Max Speed: 33 Kts. (38 MPH)

Displacement: 98987.555638 Pounds

Water Capacity: 317.0064624 Gallons

Fuel Capacity: 1320.86026 Gallons

Accommodations

Total Berths: 8

Crew Berths: 2

Hull and Deck Information

Hull Material: GRP

Hull Color: white hull

Engine Information

Engines: 2

Manufacturer: MAN

Model: V12

Fuel Type: Diesel

DETAILED INFORMATION

Accommodation

"MIBOWT" consists of 4 Cabins sleeping a total of 8 guests, with an additional Crew Cabin for 2. Comprising of a full beam Master Cabin located amidships, a forward VIP Guest Cabin, a Double Guest Cabin to starboard and a Twin Guest Cabin to port side.

Additional

220v secondary water pump 48" open scanner 90 Metres of Galvanised 10mm anchor chain
 Armani casa fabrics in lieu of standard Beige towelling covers for all exterior cushions and seating
 Bow Sunbathing Cushions with folding back rests Cabin Carbon fibre effect console panels
 Chocks on platform for Jet-ski or Tender - Distributor must specify tender type so correct profile can be ordered
 Cockpit ceramic electric Griddle on the Flybridge Compass Swinging and adjustment with correction card
 Crew cabin with air conditioning Day head option Dimmer switches on interior lighting
 Dynamic Positioning System for station holding with ZF JMS E120W - 12.1" Colour repeater on fly console & Raystar 125 GPS Diff receiver with 4kw Electric cooling unit for flybridge cool box
 Electrically operated side opening window in the Galley Flooring upgraded to Amtico Linear Jet flooring in the Saloon, Dining, Galley & Crew Flybridge
 Cockpit Teak Decking Flybridge GRP hardtop with concertina centre canopy (80 Yacht style). Flybridge Seats and Wet bar cover
 Fresh water deck wash system with outlets forward and aft including deck wash hose kit
 Fusion Fore deck speaker system - Stereo waterproof 7" speakers and fixed waterproof remote control
 Generator - second Onan 27kw 50Hz (27MDKBU) Glendinning Cablemaster - 1 x power feed and recovery 220V AC shorepower cable
 Hydraulic Sleipner Bow thruster SH240 and Hydraulic Sleipner Stern Thruster SH240 system with Simultaneous dual controls
 Hydraulic Telescopic gangway 4.5 mtrs with teak treads Ice maker Interior Wood Finish - Black American Walnut in lieu of standard Joystick control system JMS for lower console and flybridge console
 Low level White LED side deck lights 8 per side mid cabin toilet and day head Nero Assoluto Granite top on dining, upper galley, fwd toilet, aft master cabin toilet, stbd Ottoman stool
 Upholstered in CB Oyster Leather in lieu of Coffee Table in the saloon Raymarine Autopilot system ST8002+ dual station and SPX-10 Course Computer Raymarine E120W - 12.1" Widescreen additional Colour display on the main console Raymarine E120W - 12.1" Widescreen Colour Radar Chartplotter on lower console with Raymarine ST70 colour Speed and Depth multifunctional display on the lower console and multifunctional repeater display on the flybridge
 Roman Blinds in Master cabin in lieu of standard curtains Safe - 2 brick - with Digital lock in the Master Walk in Wardrobe
 Seakeeper Gyro stabiliser installation Table lamp – Armani Casa- Lucilla Table Lamp in Brown Oak with Light Caramel parchment shade Teak Stair Treads from access door in the crew cabin in the Crew Cabin Teak table with folding top fitted on a polished stainless steel leg
 Third station JMS joystick, control panel and engine start/stop fitted in the starboard side coaming in fold out panel in the Lower Aft Deck TV Shore cable inlet connection socket fitted at stern
 Two single berths in lieu of double in crew cabin U-line Wine cooler in the bar unit (Forward of Saloon) Underwater lights - Aqualuma white LED wide angle x

4 Venetian blinds in saloon, fwd cabin, fwd toilet, master cabin, aft master cabin toilet, stbd mid cabin, stbd mid cabin toilet, port mid cabin and day head Water maker Water purifier for icemaker
- General Ecology Ultrafine in-line systems one for each Williams 385 jetrib

Vessel Description

The Sunseeker Manhattan 73 "MIBOWT" is a fantastic example of this very popular Sunseeker model. This vessel is a 2012 model, offering 4 spacious cabins and large saloon and flybridge spaces. She offers an abundance of additional extras to make your time aboard comfortable and fun. She is fully serviced and ready to go for the season. Maintained by a meticulous crew, "MIBOWT" is ready to view at any time and should really be seen to be appreciated. Part exchanges considered. Please contact us for more information.

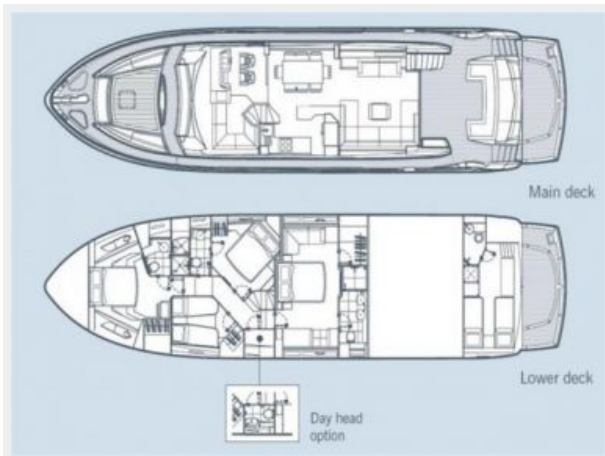
Exclusions

Owner's personal belongings.

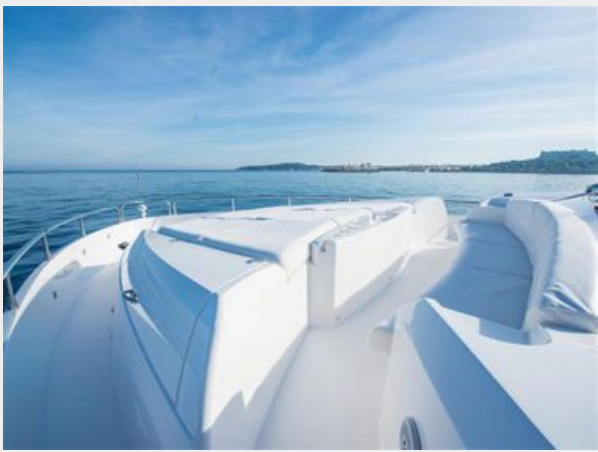
Disclaimer

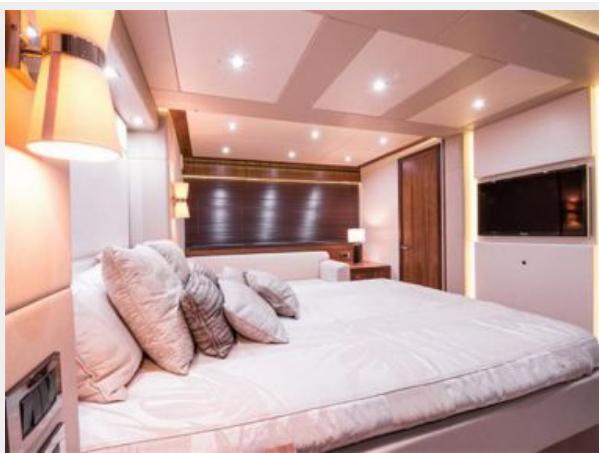
The Company offers the details of this vessel or yacht in good faith but cannot guarantee or warrant the accuracy of this information nor warrant the condition of the vessel. A buyer should instruct his representatives, agents, or his surveyors, to investigate such details as the buyer desires validated. This vessel or yacht is offered subject to prior sale, price change, or withdrawal without notice.

PHOTOS













CONTACTS

Andrey Shestakov, leading yacht broker of the sales department of Shestakov Yacht Sales Inc. Shestakov Yacht Sales Inc., the official representative of the Miami/Fort Lauderdale FL headquarters.

Contact details

Email: andrey@shestakovyachtsales.com

Web: shestakovyachtsales.com/en/

Telephones

USA: +1(954)274-4435

Office hours

Monday – Saturday: **9:00 - 21:00** EDT

Sunday: **closed**

Address



Harbour Towne Marina, 850 NE 3rd St,
STE 213, Dania, FL 33004