

HORSIN' AROUND — VIKING



Builder: VIKING

Year Built: 1998

Model: Sport Fisherman

Price: PRICE ON APPLICATION

Location: United States

LOA: 47' 0" (14.33m)

Beam: 15' 6" (4.72m)

Cruise Speed: 29 Kts. (33 MPH)

Max Speed: 32 Kts. (37 MPH)

Our experienced yacht broker, Andrey Shestakov, will help you choose and buy a yacht that best suits your needs **Horsin' Around — VIKING** from our catalogue. Presently, at Shestakov Yacht Sales Inc., we have a wide variety of yachts available on our sale's list. We also work in close contact with all the big yacht manufacturers from all over the world.

If you would like to buy a yacht **Horsin' Around — VIKING** or would like help answering any questions concerning purchasing, selling or chartering a yacht, please call **+1(954)274-4435**

TABLE OF CONTENTS

TABLE OF CONTENTS	2
SPECIFICATIONS	4
Basic Information	4
Dimensions	4
Speed, Capacities and Weight	4
Accommodations	4
Hull and Deck Information	4
Engine Information	4
DETAILED INFORMATION	5
Accommodations and Features	5
Exclusions	6
Disclaimer	7
PHOTOS	8
Port Profile	8
Port Profile	8
Bow	8
Port Profile	8
Bow	8
Port Profile	8
Portside	9
Bow	9
Portside	9
Starboard	9
Helm	10
Cockpit	10
Cockpit	10
Salon	10
Galley	11

Galley	11
Master Stateroom	11
Head	11
Guest Stateroom	12
Head	12
Engine Room	12
CONTACTS	13
Contact details	13
Telephones	13
Office hours	13
Address	13

SPECIFICATIONS

Basic Information

Category: Sport Fisherman

Model Year: 1998

Year Built: 1998

Country: United States

Dimensions

LOA: 47' 0" (14.33m)

Beam: 15' 6" (4.72m)

Speed, Capacities and Weight

Cruise Speed: 29 Kts. (33 MPH)

Max Speed: 32 Kts. (37 MPH)

Displacement: 46300 Pounds

Fuel Capacity: 700 Gallons

Accommodations

Total Cabins: 2

Hull and Deck Information

Hull Material: Fiberglass

Engine Information

Engines: 2

Manufacturer: MAN

Model: D2848 LE403

Engine Type: Inboard

Fuel Type: Diesel

DETAILED INFORMATION

Accommodations and Features

Vessel Sleeps 5 in Island queen berth, over and under bunks and lounge in Salon. Vessel has 2 heads with private access from each stateroom. Plenty of storage and teak interior.

Master Stateroom:

- Island queen berth w/ storage underneath
- Cabinet storage
- Hanging locker
- Ensuite head

Guest Stateroom:

- Over and under twin bunks to starboard
- Hanging locker
- Ensuite access to day head and shower stall

Salon:

Open Salon with L shape sofa to port, aft corner. Dinette located forward to starboard and galley across. Plenty of cabinet storage. Dinette is a high gloss teak. Carpe protected by runner.

Galley:

- Corain counter tops
- Ceran (2) burner stove
- Convection/ microwave oven
- Water tank level gauge
- Kenmore side by side refrigerator/ freezer
- Kenmore Washer/ Dyer

Cockpit/ Foredeck:

- Large dual lid fishbox
- Fighting Chair
- Bow pulpit w/ rails
- Windlass w/ anchor, chain & rode
- (2) bow hatches
- (6) rod holders
- (4) wing rod holders
- Powder coated grab rails to foredeck
- Sink w/ 5 drawer tackle center
- Engine room access

- Fresh & saltwater wash down
- Fresh water inlet
- Transom door
- Glendinning power & cable reel
- TV/ Phone inlet
- Rupp double spreader outriggers

Flybridge:

Flybridge is covered by aluminum framed fiberglass hardtop. Plenty of seating with L-shaped lounge forward of helm and lounge along port side. Both with cushions and storage beneath. Helm offers cabinet storage beneath as well.

- 3-Sided EZ2CY Enclosure
- Teak helm chairs
- Glendenning engine controls - single lever
- Running light
- Anchor light
- ITT Jabsco Search Light
- Furuno FCV 292 Color sounder
- 72 Mile Furuno Radar
- Simrad AP20 Auto pilot
- Garmin GPS map 741
- Raymarine E140
- Icom VHF
- Ritchie compass

Engine & Mechanical Equipment:

- Engine room circulation fan
- Racor Fuel/ Water separators
- Oil Transfer system
- Cruisair Air Conditioning System
- Glendenning engine synchronization
- Hot water heater
- Onan 15KW Generator w/ Sound Shield
- Sentry Battery Charger
- Dripless Shaft seals
- Spare Props

Exclusions: Owner's personal effects are excluded from the sale.

Exclusions

Owner's personal belongings.

Disclaimer

The Company offers the details of this vessel or yacht in good faith but cannot guarantee or warrant the accuracy of this information nor warrant the condition of the vessel. A buyer should instruct his representatives, agents, or his surveyors, to investigate such details as the buyer desires validated. This vessel or yacht is offered subject to prior sale, price change, or withdrawal without notice.

PHOTOS

Port Profile



Port Profile



Port Profile



Bow



Port Profile



Bow



Bow



Portside



Portside



Starboard



Helm



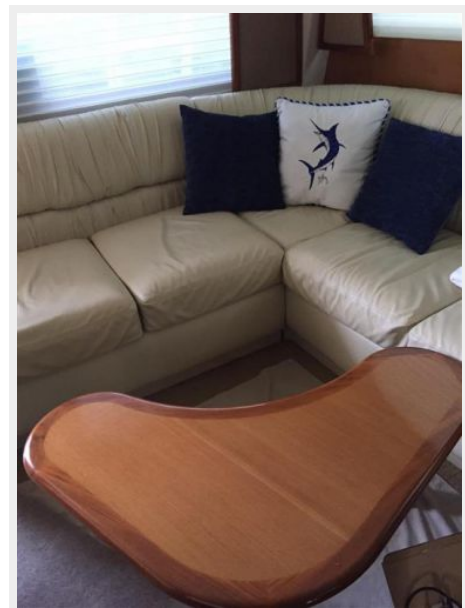
Cockpit



Cockpit



Salon



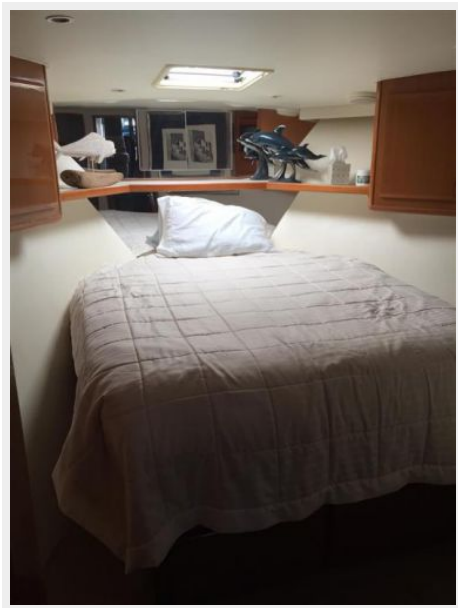
Galley



Galley



Master Stateroom



Head



Guest Stateroom



Head



Engine Room



CONTACTS

Andrey Shestakov, leading yacht broker of the sales department of Shestakov Yacht Sales Inc. Shestakov Yacht Sales Inc., the official representative of the Miami/Fort Lauderdale FL headquarters.

Contact details

Email: andrey@shestakovyachtsales.com

Web: shestakovyachtsales.com/en/

Telephones

USA: +1(954)274-4435

Office hours

Monday – Saturday: **9:00 - 21:00** EDT

Sunday: **closed**

Address



Harbour Towne Marina, 850 NE 3rd St,
STE 213, Dania, FL 33004