

VIKING CONVERTIBLE — VIKING



Builder: VIKING

Year Built: 1990

Model: Sport Fisherman

Price: PRICE ON APPLICATION

Location: United States

LOA: 57' 0" (17.37m)

Beam: 18' 0" (5.49m)

Max Draft: 5' 6" (1.68m)

Cruise Speed: 27 Kts. (31 MPH)

Max Speed: 31 Kts. (36 MPH)

Our experienced yacht broker, Andrey Shestakov, will help you choose and buy a yacht that best suits your needs **Viking Convertible — VIKING** from our catalogue. Presently, at Shestakov Yacht Sales Inc., we have a wide variety of yachts available on our sale's list. We also work in close contact with all the big yacht manufacturers from all over the world.

If you would like to buy a yacht **Viking Convertible — VIKING** or would like help answering any questions concerning purchasing, selling or chartering a yacht, please call **+1(954)274-4435**

TABLE OF CONTENTS

TABLE OF CONTENTS	2
SPECIFICATIONS	3
Basic Information	3
Dimensions	3
Speed, Capacities and Weight	3
Accommodations	3
Hull and Deck Information	3
Engine Information	3
DETAILED INFORMATION	4
Accommodations	4
ELECTRONIC EQUIPMENT	4
mechanical and engine details	4
Fishing Equipment	5
Exclusions	6
Disclaimer	6
PHOTOS	7
CONTACTS	9
Contact details	9
Telephones	9
Office hours	9
Address	9

SPECIFICATIONS

Basic Information

Category: Sport Fisherman

Model Year: 1990

Year Built: 1990

Country: United States

Dimensions

LOA: 57' 0" (17.37m)

Beam: 18' 0" (5.49m)

Max Draft: 5' 6" (1.68m)

MFG Length: 57' 0" (17.37m)

Speed, Capacities and Weight

Cruise Speed: 27 Kts. (31 MPH)

Max Speed: 31 Kts. (36 MPH)

Water Capacity: 250 Gallons

Fuel Capacity: 1500 Gallons

Accommodations

Total Cabins: 3

Total Heads: 3

Hull and Deck Information

Hull Material: Fiberglass

Engine Information

Engines: 1

Manufacturer: Detroit Diesel

Model: 12v92TA

Fuel Type: Diesel

DETAILED INFORMATION

Accommodations

FEATURES A GALLEY UP 3 STATEROOM , 3 HEAD LAYOUT. THE MASTER AND PORT GUEST HEADS BOTH HAVE STALL SHOWERS.

ELECTRONIC EQUIPMENT

Sony TV in salon, and in master and port guest staterooms

Sony Sat TV receiver

JVC DVC 5 disc changer

Integra stereo system

FLYBRIDGE :

DY TEK SEA TEMP GAUGE

robertson AP 200 DL Autopilot

Garmin GPS Map 140 plotter

SEA VHF Radio

Furuno radar and color Sounder

NS 961 XD Plotter

mechanical and engine details

Mains have apprx. 1000 hours since rebuild in 2003

Port genset - 20 KW Onan-

Starboard genset 20 KW Onan-3710 hours

Dripless shaft logs

Oil change system

Water Makers Inc. H2o maker

Glenn Denning Engine Synchronizer

2 sentry battery chargers

fresh and salt water washdown systems in cockpit

Electric fuel priming pumps

2 fireboy halon units

Hynautic engine controls

VDO engine gauges

50 AMP shore power with cablemaster

trolling valves

fuel transfer pump

Fishing Equipment

Lee 3x riggers and center rigger

Rybovich tuna tower

Murray bros fighting chair

transom door and gate

in deck fish box

tower quartz lights

cockpit tackle center, bait prep and freezer

insulated drink box

6 rod holders in gunells

Exclusions

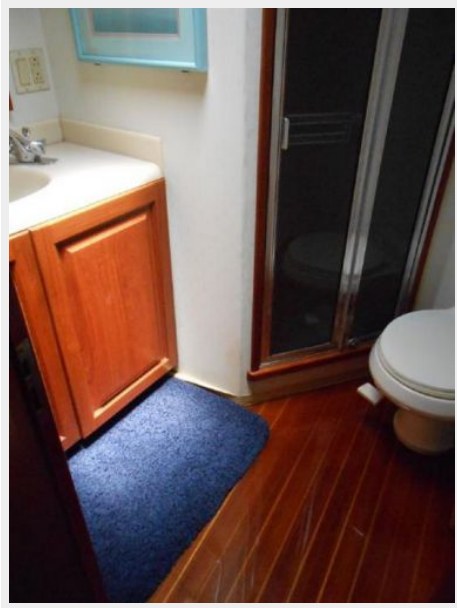
Owner's personal belongings.

Disclaimer

The Company offers the details of this vessel or yacht in good faith but cannot guarantee or warrant the accuracy of this information nor warrant the condition of the vessel. A buyer should instruct his representatives, agents, or his surveyors, to investigate such details as the buyer desires validated. This vessel or yacht is offered subject to prior sale, price change, or withdrawal without notice.

PHOTOS





CONTACTS

Andrey Shestakov, leading yacht broker of the sales department of Shestakov Yacht Sales Inc. Shestakov Yacht Sales Inc., the official representative of the Miami/Fort Lauderdale FL headquarters.

Contact details

Email: andrey@shestakovyachtsales.com

Web: shestakovyachtsales.com/en/

Telephones

USA: +1(954)274-4435

Office hours

Monday – Saturday: **9:00 - 21:00** EDT

Sunday: **closed**

Address



Harbour Towne Marina, 850 NE 3rd St,
STE 213, Dania, FL 33004