

## ANDIAMO — JEFFERSON



**Builder:** JEFFERSON

**Year Built:** 2005

**Model:** Motor Yacht

**Price:** PRICE ON APPLICATION

**Location:** United States

**LOA:** 63' 4" (19.30m)

**Beam:** 16' 0" (4.88m)

**Min Draft:** 4' 10" (1.47m)

**Cruise Speed:** 16 Kts. (18 MPH)

**Max Speed:** 23 Kts. (26 MPH)

Our experienced yacht broker, Andrey Shestakov, will help you choose and buy a yacht that best suits your needs **Andiamo — JEFFERSON** from our catalogue. Presently, at Shestakov Yacht Sales Inc., we have a wide variety of yachts available on our sale's list. We also work in close contact with all the big yacht manufacturers from all over the world.

If you would like to buy a yacht **Andiamo — JEFFERSON** or would like help answering any questions concerning purchasing, selling or chartering a yacht, please call **+1(954)274-4435**

# TABLE OF CONTENTS

TABLE OF CONTENTS	2
SPECIFICATIONS	4
Overview	4
Basic Information	5
Dimensions	5
Speed, Capacities and Weight	5
Accommodations	5
Hull and Deck Information	6
Engine Information	6
PHOTOS	7
Salon looking aft	7
Master Stateroom	7
salon looking fwd	7
Master	7
Master Stateroom	7
Queen VIP Forward	8
Guest stateroom stb side	8
Pilothouse	8
PH Pompanette chair	8
Dining area PH	8
Dining , stairs to bridge from PH	8
Trash compactor, mini fridge	9
Stb side bridge seating	9
Port side bridge seating	9
Helm Bridge	9
Wet bar, mini fridge & ice maker Bridge	9
10' Caribe Dinghy	9
dinghy	10

Bridge looking fwd	10
Molded bridge steps from aft deck	10
Bow seating	10
Underway	10
Covered aft deck	10
SS sink	11
Spacious Gallet	11
Granite counter tops	11
DW, 3 burner cook top	11
Hardwood sole	11
Microwave	11
Galley looking stbd	12
galley looking aft	12
Stbd side engine room	12
Detroit/MTU series 60 800hp	12
New Strainer hoses	12
Easy access to Racors and fuel manifold	13
4 AC compressors (one new in August 2014)	13
5' to 5'7" headroom	13
New Bow thruster charger and batteries	14
DDEC Displays 1275 hrs	14
<b>CONTACTS</b>	<b>16</b>
Contact details	16
Telephones	16
Office hours	16
Address	16

# SPECIFICATIONS

## Overview

A heavy semi displacement hull makes this vessel great in a variety of sea conditions. Her traditional lines are always a favorite among boaters.

As you enter through the glass sliding door from the aft deck, your eyes are drawn to the large salon surrounded by glass and seating for 8+. The high gloss interior wood work with burl accents are in impeccable condition and always draws compliments. Storage beneath all the seating. A new flat screen compliments the interior.

The galley with granite countertops, DW, compactor, 3 burner stove top and microwave and lots of cabinet space is open to the salon. Perfect for entertaining

One step up from the galley is a spacious Pilot House and dining area. Visibility from this lower helm is great. Long trips are comfortable with the custom pompanette helm chair. All the controls are at you finger tips. Stbd & Port PH doors making access to the side decks a breeze

A few steps down forward of the PH leads you to the staterooms. Queen master midship with new mattress, flatscreen, DVD player and private head with tub/shower.

Moving forward to stbd is the guest cabin with bunk beds. Located in the Bow is a queen size VIP for guests and access to the forward head. A new flatscreen and DVD player complete the guest suite.

The large covered aft deck is a great space for company and eating breakfast while you watch the fish swim by. The molded steps to the flybridge are accessed on the stbd side.

The flybridge is a fantastic area for a small crowd. Drop the 10' dinghy in the water and you have a great dance floor. Wet bar, mini fridge, ice maker, storage under seating and a gas grill, The hard top with bimini top extension keeps you in the shade. There is room for 2 kayaks and water toys. East access to the engine room from the aft deck. Headroom is approx 5' to 5'7". Every system is within reach. The Detroit/MTU Series 60, 6 cylinder engines have been meticulously maintained. Service records available upon request. These computer controlled 4 stroke engines have been trouble free, start on the tap of the key and are fuel efficient. The westerbeake 20kw Gen currently has approx 1930 hours and has been cared for like the mains and the rest of the boat. Simrad GPS & Radar Simrad Autopilot 2 VHF's Trim Tabs Glendinning cable master Bow & Stern 50amp Bow thruster Rudder position indicator Windlass 3 station controls Dockside cable & telephone systems Shower on swim platform **SALON** Uline wine cooler in salon Denon AV surround sound receiver Sony 5 disc player New Flatscreen **GALLEY** GE trash compactor GE Microwave Fisher & Paykel Dishwasher GE stack washer/dryer 3 Xintex carbon monoxide detectors **BRIDGE** Hardtop Bimini extension Wet bar Mini fridge w/ice maker This vessel is well worth your time, seriously motivated seller has this boat right! 2015- New House batteries New bow thruster batteries & charger New Generator battery New fresh water pump New water Heater

---

2014 New AC compressor for master stateroom Reseal PH and salon windows

## Basic Information

---

**Category:** Motor Yacht

**Sub Category:** Raised Pilothouse

**Model Year:** 2005

**Year Built:** 2005

**Country:** United States

**Vessel Top:** Hardtop

**Fly Bridge:** Yes

**Cockpit:** Yes

## Dimensions

---

**LOA:** 63' 4" (19.30m)

**Beam:** 16' 0" (4.88m)

**Min Draft:** 4' 10" (1.47m)

## Speed, Capacities and Weight

---

**Cruise Speed:** 16 Kts. (18 MPH)

**Max Speed:** 23 Kts. (26 MPH)

**Gross Tonnage:** 45 Pounds

**Water Capacity:** 200 Gallons

**Holding Tank:** 80 Gallons

**Fuel Capacity:** 1000 Gallons

## Accommodations

---

**Total Cabins:** 3

**Total Berths:** 4

**Sleeps:** 6

**Total Heads:** 2

---

## Hull and Deck Information

---

**Hull Material:** Fiberglass

**Deck Material:** Fiberglass

**Hull Configuration:** Semi-Displacement

**Hull Color:** Blue

**Hull Finish:** Aluminum

---

## Engine Information

---

**Engines:** 2

**Manufacturer:** Detroit Diesel/MTU

**Model:** series 60

**Engine Type:** Inboard

**Fuel Type:** Diesel

# PHOTOS



Salon looking aft



salon looking fwd



Master Stateroom



Master



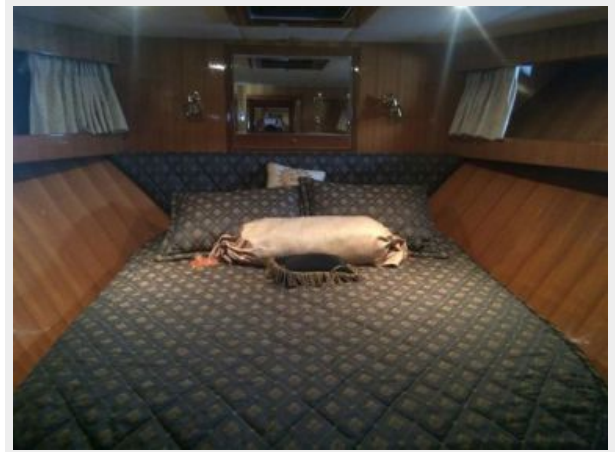
Master Stateroom



**Guest stateroom stb side**



**Queen VIP Forward**



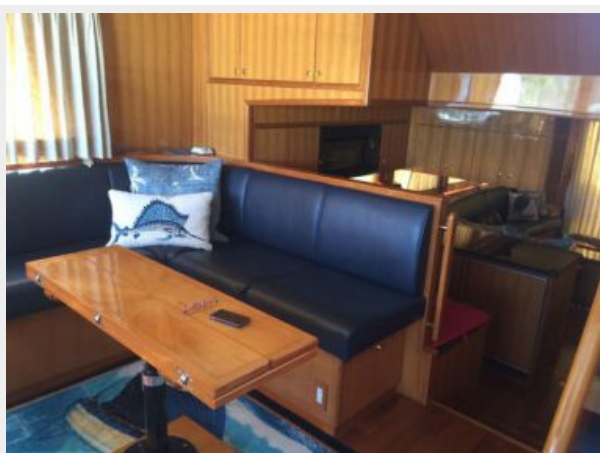
**Pilothouse**



**PH Pompanette chair**



**Dining area PH**



**Dining , stairs to bridge from PH**





**Trash compactor, mini fridge**



**Stb side bridge seating**



**Port side bridge seating**



**Helm Bridge**



**Wet bar, mini fridge & ice maker Bridge**



**10' Caribe Dinghy**



**dinghy**



**Bridge looking fwd**



**Molded bridge steps from aft deck**



**Bow seating**



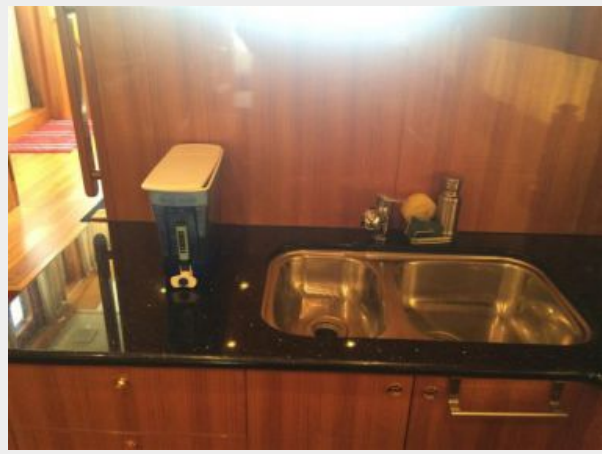
**Covered aft deck**



**Underway**



**SS sink**



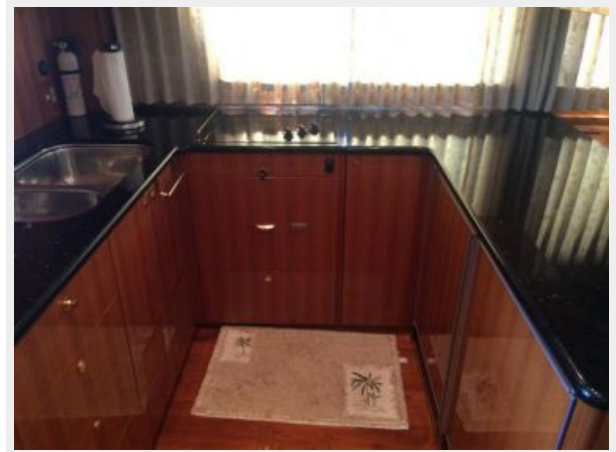
**Spacious Gallet**



**Granite counter tops**



**DW, 3 burner cook top**



**Hardwood sole**



**Microwave**



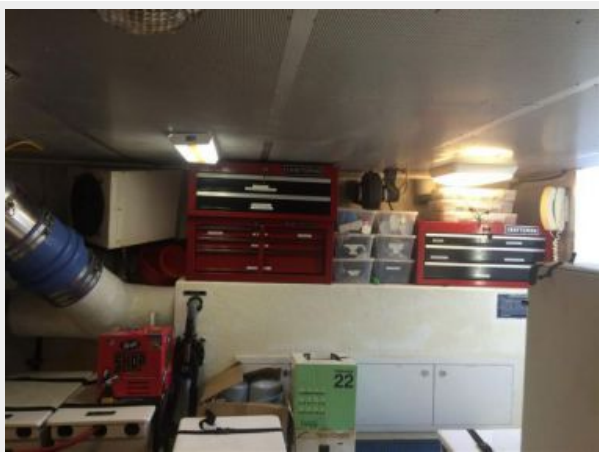
**Galley looking stbd**



**galley looking aft**



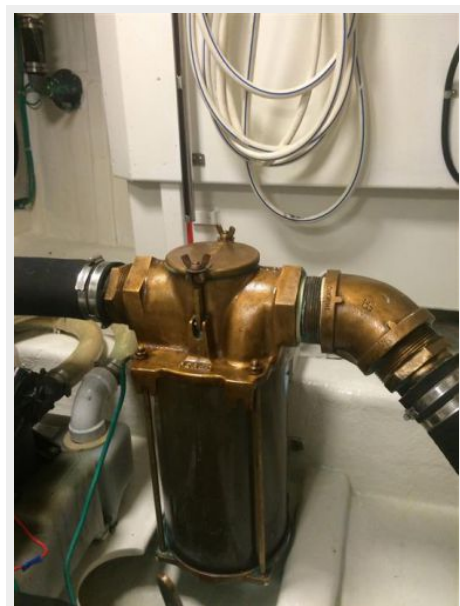
**Stbd side engine room**



**Detroit/MTU series 60 800hp**



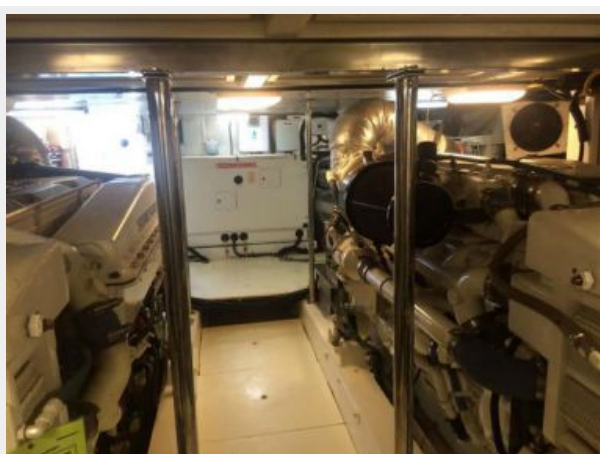
**New Strainer hoses**



**Easy access to Racors and fuel manifold**



**5' to 5'7" headroom**



**4 AC compressors (one new in August 2014)**

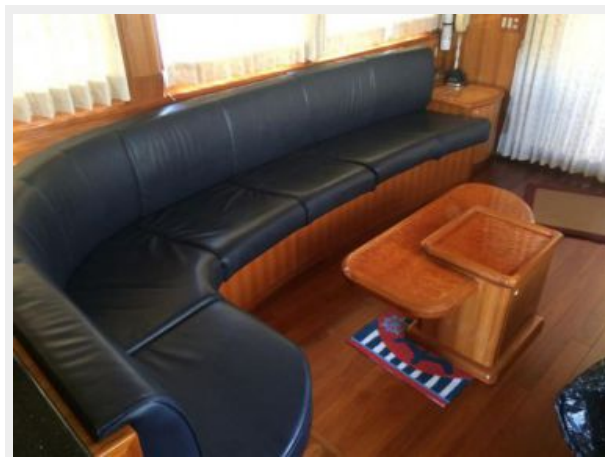




New Bow thruster charger and batteries

DDEC Displays 1275 hrs





---

# CONTACTS

---

Andrey Shestakov, leading yacht broker of the sales department of Shestakov Yacht Sales Inc. Shestakov Yacht Sales Inc., the official representative of the Miami/Fort Lauderdale FL headquarters.

---

## Contact details

---

Email: [andrey@shestakovyachtsales.com](mailto:andrey@shestakovyachtsales.com)

Web: [shestakovyachtsales.com/en/](http://shestakovyachtsales.com/en/)

---

## Telephones

---

USA: +1(954)274-4435

---

## Office hours

---

Monday – Saturday: **9:00 - 21:00** EDT

Sunday: **closed**

---

## Address

---



Harbour Towne Marina, 850 NE 3rd St,  
STE 213, Dania, FL 33004