

ANDIAMO — JEFFERSON



Судостроитель: JEFFERSON

Год постройки: 2005

Модель: Моторная яхта

Цена: ЦЕНА ЯХТЫ ПО ЗАПРОСУ

Местонахождение: United States

Длина общая: 63' 4" (19.30m)

Ширина: 16' 0" (4.88m)

Мин. осадка: 4' 10" (1.47m)

Крейс. скорость: 16 Kts. (18 MPH)

Макс. скорость: 23 Kts. (26 MPH)

Купить **Andiamo — JEFFERSON** а также выбрать подходящую вам яхту из нашего каталога яхт вам поможет опытный яхтенный брокер Андрей Шестаков. На сегодняшний день компания **Shestakov Yacht Sales Inc.** имеет большое количество яхт в собственном списке продаж, а также тесно сотрудничает со всеми крупными яхтенными производителями по всему миру.

Для того чтобы купить яхту **Andiamo — JEFFERSON** а также проконсультироваться по любому вопросу связанному с покупкой, продажей, чартером яхт позвоните по телефону **+7(918)465-66-44**.

ОГЛАВЛЕНИЕ

ОГЛАВЛЕНИЕ	2
ХАРАКТЕРИСТИКИ	4
Обзор	4
Основная информация	5
Размеры	5
Скорость, вместимость и масса	5
Размещение	5
Корпус и палуба	6
Информация о двигателе	6
ФОТОГРАФИИ	7
Salon looking aft	7
Master Stateroom	7
salon looking fwd	7
Master	7
Master Stateroom	7
Queen VIP Forward	8
Guest stateroom stb side	8
Pilothouse	8
PH Pompanette chair	8
Dining area PH	8
Dining , stairs to bridge from PH	8
Trash compactor, mini fridge	9
Stb side bridge seating	9
Port side bridge seating	9
Helm Bridge	9
Wet bar, mini fridge & ice maker Bridge	9
10' Caribe Dinghy	9
dinghy	10

Bridge looking fwd	10
Molded bridge steps from aft deck	10
Bow seating	10
Underway	10
Covered aft deck	10
SS sink	11
Spacious Gallet	11
Granite counter tops	11
DW, 3 burner cook top	11
Hardwood sole	11
Microwave	11
Galley looking stbd	12
galley looking aft	12
Stbd side engine room	12
Detroit/MTU series 60 800hp	12
New Strainer hoses	12
Easy access to Racors and fuel manifold	13
4 AC compressors (one new in August 2014)	13
5' to 5'7" headroom	13
New Bow thruster charger and batteries	14
DDEC Displays 1275 hrs	14
КОНТАКТЫ	16
Контактная информация	16
Телефоны	16
Время работы	16
Адрес	16

ХАРАКТЕРИСТИКИ

Обзор

A heavy semi displacement hull makes this vessel great in a variety of sea conditions. Her traditional lines are always a favorite among boaters.

As you enter through the glass sliding door from the aft deck, your eyes are drawn to the large salon surrounded by glass and seating for 8+ The high gloss interior wood work with burl accents are in impeccable condition and always draws compliments. Storage beneath all the seating. A new flat screen compliments the interior.

The galley with granite countertops, DW, compactor, 3 burner stove top and microwave and lots of cabinet space is open to the salon. Perfect for entertaining

One step up from the galley is a spacious Pilot House and dining area. Visibility from this lower helm is great. Long trips are comfortable with the custom pompanette helm chair. All the controls are at you finger tips. Stbd & Port PH doors making access to the side decks a breeze

A few steps down forward of the PH leads you to the staterooms. Queen master midship with new mattress, flatscreen, DVD player and private head with tub/shower.

Moving forward to stbd is the guest cabin with bunk beds. Located in the Bow is a queen size VIP for guests and access to the forward head. A new flatscreen and DVD player complete the guest suite.

The large covered aft deck is a great space for company and eating breakfast while you watch the fish swim by. The molded steps to the flybridge are accessed on the stbd side.

The flybridge is a fantastic area for a small crowd. Drop the 10' dinghy in the water and you have a great dance floor. Wet bar, mini fridge, ice maker, storage under seating and a gas grill, The hard top with bimini top extension keeps you in the shade. There is room for 2 kayaks and water toys. East access to the engine room from the aft deck. Headroom is approx 5' to 5'7". Every system is within reach. The Detroit/MTU Series 60, 6 cylinder engines have been meticulously maintained. Service records available upon request. These computer controlled 4 stroke engines have been trouble free, start on the tap of the key and are fuel efficient. The westerbeake 20kw Gen currently has approx 1930 hours and has been cared for like the mains and the rest of the boat. Simrad GPS & Radar Simrad Autopilot 2 VHF's Trim Tabs Glendinning cable master Bow & Stern 50amp Bow thruster Rudder position indicator Windlass 3 station controls Dockside cable & telephone systems Shower on swim platform **SALON** Uline wine cooler in salon Denon AV surround sound receiver Sony 5 disc player New Flatscreen **GALLEY** GE trash compactor GE Microwave Fisher & Paykel Dishwasher GE stack washer/dryer 3 Xintex carbon monoxide detectors **BRIDGE** Hardtop Bimini extension Wet bar Mini fridge w/ice maker This vessel is well worth your time, seriously motivated seller has this boat right! 2015- New House batteries New bow thruster batteries & charger New Generator battery New fresh water pump New water Heater

2014 New AC compressor for master stateroom Reseal PH and salon windows

Основная информация

Тип судна: Моторная яхта	Подкатегория: Raised Pilothouse
Модельный год: 2005	Год постройки: 2005
Страна: United States	Верх: Hardtop
Открытая палуба мостика: Да	Кубрик: Да

Размеры

Длина общая: 63' 4" (19.30m)	Ширина: 16' 0" (4.88m)
Мин. осадка: 4' 10" (1.47m)	

Скорость, вместимость и масса

Крейс. скорость: 16 Kts. (18 MPH)	Макс. скорость: 23 Kts. (26 MPH)
Чистый вес: 45 Pounds	Вместимость воды: 200 Gallons
Вместимость сточного бака: 80 Gallons	Объем топливного бака: 1000 Gallons

Размещение

Всего кают: 3	Всего коек: 4
Спальные места: 6	Всего ком. состава: 2

Корпус и палуба

Материал корпуса: Fiberglass

Материал палубы: Fiberglass

Комплектация корпуса: Semi-Displacement

Цвет корпуса: Blue

Отделка корпуса: Aluminum

Информация о двигателе

Двигатели: 2

Производитель: Detroit Diesel/MTU

Модель: series 60

Тип двигателя: Inboard

Тип топлива: Diesel

ФОТОГРАФИИ



Salon looking aft



salon looking fwd



Master Stateroom



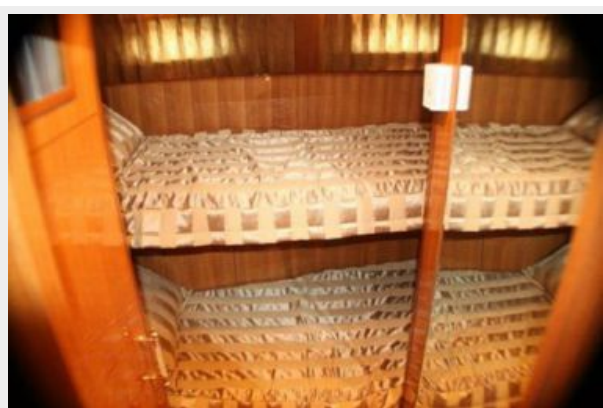
Master



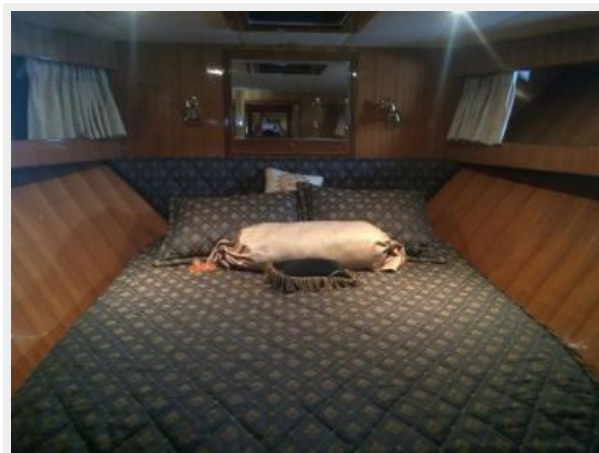
Master Stateroom



Guest stateroom stb side



Queen VIP Forward



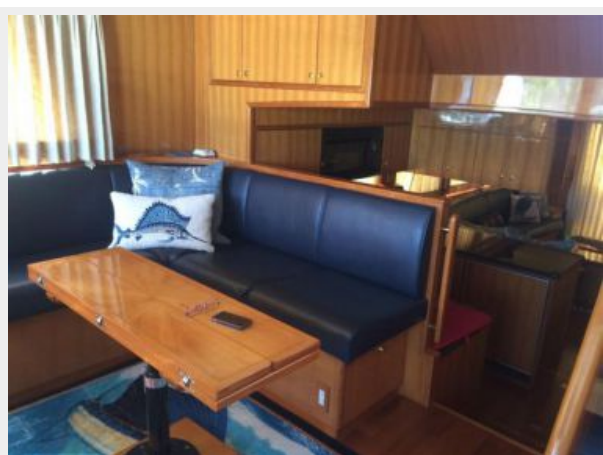
Pilothouse



PH Pompanette chair



Dining area PH



Dining , stairs to bridge from PH



Trash compactor, mini fridge



Stb side bridge seating



Port side bridge seating



Helm Bridge



Wet bar, mini fridge & ice maker Bridge



10' Caribe Dinghy



dinghy



Bridge looking fwd



Molded bridge steps from aft deck



Bow seating



Covered aft deck



Underway



SS sink



Spacious Gallet



Granite counter tops



DW, 3 burner cook top



Hardwood sole



Microwave



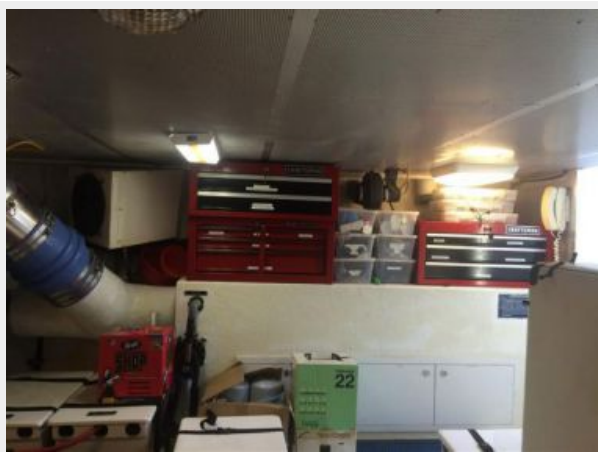
Galley looking stbd



galley looking aft



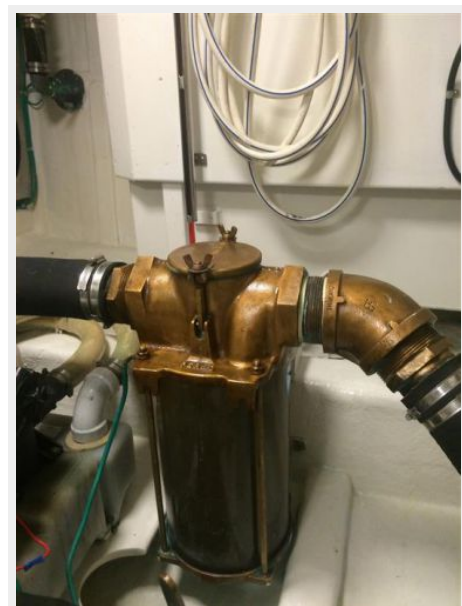
Stbd side engine room



Detroit/MTU series 60 800hp



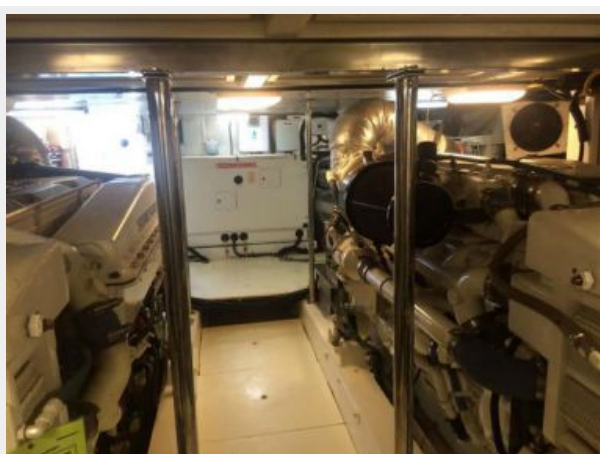
New Strainer hoses



Easy access to Racors and fuel manifold



5' to 5'7" headroom



4 AC compressors (one new in August 2014)

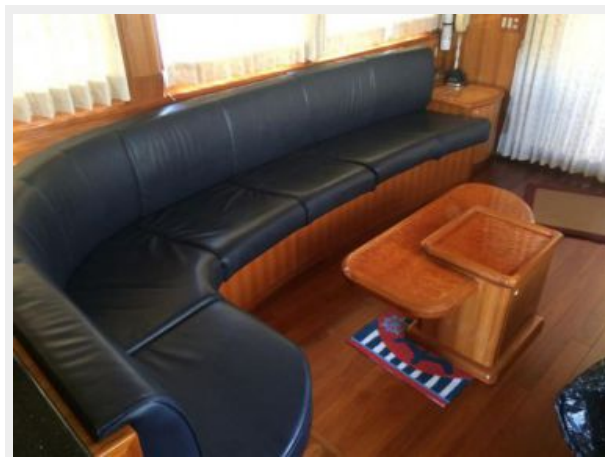




New Bow thruster charger and batteries

DDEC Displays 1275 hrs





КОНТАКТЫ

Андрей Шестаков (Andrey Shestakov) – ведущий яхтенный брокер отдела продаж яхт и судов компании Shestakov Yacht Sales Inc. Официальный представитель Shestakov Yacht Sales Inc. для русскоговорящих клиентов в центральном офисе компании в Майами/Форт Лодердейл/Флорида/США.

Контактная информация

Email: andrey@shestakovyachtsales.com

Web: shestakovyachtsales.com

Телефоны

Краснодарский край: **+7(918)465-66-44**

США, Майами, Флорида: **+1(954)274-4435**

Время работы

Понедельник – Суббота: **9:00 - 21:00**
EDT

Воскресенье: **Закрито**

Адрес



Harbour Towne Marina, 850 NE 3rd St,
STE 213, Dania, FL 33004