

SINCE THEN — OCEAN ALEXANDER



Builder: OCEAN ALEXANDER

Year Built: 2006

Model: Motor Yacht

Price: PRICE ON APPLICATION

Location: United States

LOA: 74' 0" (22.56m)

Beam: 20' 1" (6.12m)

Max Draft: 5' 5" (1.65m)

Cruise Speed: 21 Kts. (24 MPH)

Max Speed: 24 Kts. (28 MPH)

Our experienced yacht broker, Andrey Shestakov, will help you choose and buy a yacht that best suits your needs **SINCE THEN — OCEAN ALEXANDER** from our catalogue. Presently, at Shestakov Yacht Sales Inc., we have a wide variety of yachts available on our sale's list. We also work in close contact with all the big yacht manufacturers from all over the world.

If you would like to buy a yacht **SINCE THEN — OCEAN ALEXANDER** or would like help answering any questions concerning purchasing, selling or chartering a yacht, please call **+1(954)274-4435**

TABLE OF CONTENTS

TABLE OF CONTENTS	2
SPECIFICATIONS	5
Overview	5
Basic Information	5
Dimensions	5
Speed, Capacities and Weight	5
Accommodations	6
Hull and Deck Information	6
Engine Information	6
DETAILED INFORMATION	7
Overview	7
Hull, Superstructure & Decks	7
Hardware & General Equipment	7
Control & Navigation	8
Electronics	9
Electrical System	9
Engine Room	9
Accommodations & Interior	11
Salon	11
Galley	11
Master Stateroom	12
Forward Guest Stateroom	12
Port Guest Stateroom	13
Crew Quarters	13
Heads	13
Pilot House	14
Exclusions	14
Disclaimer	14

PHOTOS	15
Anchored Profile	15
Running Profile	15
Salon	15
Salon	15
Salon	15
Galley/Pilothouse	15
Pilothouse Side Door	16
Galley	16
Dinette / Pilothouse	16
Helm	16
Master Stateroom	17
Master Stateroom	17
Master Stateroom Head	17
Master Stateroom His & Her Head	17
VIP Head	18
VIP Stateroom	18
Guest Stateroom	18
Guest Stateroom	18
FlyBridge	18
Flybridge	18
Flybridge	19
Flybridge Helm	19
Tender	19
Aft Deck	19
Crew Galley	19
Crew Stateroom	19
Layout	20
Engine Room	20

Layout	20
At Home	20
Bahamas	20
CONTACTS	21
Contact details	21
Telephones	21
Office hours	21
Address	21

SPECIFICATIONS

Overview

Meticulously maintained by a perfectionist owner and full time captain. SINCE THEN was purchased new in 2007 and has been indulged every day of her life. New systems before they could break. New electronics rather than have them serviced. New soft goods before they could show any wear. This boat is special with Awlgrip paint rather than gelcoat, the largest 1650 C-32 engines offered at the time, Sakura high gloss wood throughout, and an oversized granite kitchen galley. SINCE THEN was the showboat by Ocean Alexander at the Fort Lauderdale Boat Show and is in identical condition today. She has provided dreams and memories along the way and is ready for her next devoted owner.

Basic Information

Category: Motor Yacht

Sub Category: Flybridge

Model Year: 2006

Year Built: 2006

Country: United States

Vessel Top: Hardtop

Fly Bridge: Yes

Dimensions

LOA: 74' 0" (22.56m)

LWL: 66' 2" (20.17m)

Beam: 20' 1" (6.12m)

Max Draft: 5' 5" (1.65m)

MFG Length: 77' 8" (23.67m)

Speed, Capacities and Weight

Cruise Speed: 21 Kts. (24 MPH)

Max Speed: 24 Kts. (28 MPH)

Water Capacity: 346 Gallons

Holding Tank: 150 Gallons

Fuel Capacity: 2500 Gallons

Accommodations

Total Cabins: 3

Total Berths: 4

Sleeps: 6

Total Heads: 4

Captain Cabin: True

Crew Cabin: 1

Crew Berths: 1

Crew Sleeps: 2

Crew Heads: 1

Hull and Deck Information

Hull Material: Fiberglass

Deck Material: Fiberglass

Hull Configuration: Semi-Displacement

Hull Color: White

Hull Finish: Aluminum

Hull Designer: Ed Monk Jr.

Exterior Designer: Ed Monk Jr.

Interior Designer: Ocean Alexander

Engine Information

Engines: 2

Manufacturer: Caterpillar

Model: C-32

Engine Type: Inboard

Fuel Type: Diesel

DETAILED INFORMATION

Overview

Meticulously maintained by a perfectionist owner and full time captain. SINCE THEN was purchased new in 2007 and has been indulged every day of her life. New systems before they could break. New electronics rather than have them serviced. New soft goods before they could show any wear. This boat is special with Awlcraft paint rather than gelcoat, the largest 1650 Hp C-32 engines offered at the time, Sakura high gloss wood throughout, and an oversized granite kitchen galley. SINCE THEN was the showboat by Ocean Alexander at the Fort Lauderdale Boat Show and is in identical condition today. She has provided dreams and memories along the way and is ready for her next devoted owner.

Hull, Superstructure & Decks

- Awlcraft 2000 paint on hull and entire superstructure
- Carbon fiber-infused composite hull and decks
- Longitudinal and lateral fiberglass stringers filled with high density foam
- Fiberglass hand laid with "vacuum bag technology"
- AL600 construction above waterline
- White Awlcraft paint on entire exterior
- Fly bridge seat with storage underneath
- Black Awlcraft paint boot top stripe
- Steelhead SM 2000R Tender Davit
- Tempered and safety glass
- Fiberglass settee with two oval Hi-Lo teak table on aft deck w/Covers
- Side boarding gates on aft deck
- Deck, superstructure and fly bridge with AL600 aluminum I-beam reinforcements
- Interior structural components all bonded to hull
- Reinforced collision bulkhead
- Hard top with radar arch
- Inter protect epoxy-based antifouling/anti-osmosis system
- Convenience lights, lower deck and fly bridge
- White non-skid fiberglass decks
- Swimming ladder
- Frameless window

Hardware & General Equipment

- Sakura steering wheel inside and stainless steel on fly bridge
- 2" Elliptical stainless steel handrails on main deck, 1-1/2" on fly bridge

- Stainless cleats and hawse holes
- Stainless anchor roller
- Stainless swivel anchor light bracket
- 1200 Gallon Per day Water Maker
- Muir VRC3500C windlass with SS 125 lbs. CQR anchor
- Sea and fresh-water wash down, at bow & stern
- Stainless handrails on back transom
- Stainless salon door to aft deck
- Mechanical bus type doors to side deck
- KEY Power Hydraulic bow thruster 36HP, stern 25HP
- High performance, computer-designed & machined class "S" propellers
- Hepworth heavy-duty commercial grade wipers
- Fresh water wash down in fly bridge
- Propeller shafts, Aquatech 22HS
- Bronze through-hull fittings
- Zincs on rudders, shafts & trim tabs
- Teak bow & stern staffs
- 3M Thinsulate system for sound & temperature
- Stidd electric helm chair in pilot house (black) x 1
- 3-Stidd mechanical helm seats in fly bridge (white)
- Bronze struts with cutlass bearing
- Stainless steel rudders
- Aft deck shower, dock-side water
- Television/phone inlet
- KEY power Hydraulic stabilizers
- Quash and lead foam sound and vibration insulation

Control & Navigation

- (2) Control stations: fly bridge & pilot house, with complete engine instrumentation with lighted, modern switches
- International navigation lights
- Third control in aft deck (engine and thruster)
- Electric engine controls. Two stations
- Removable U-shaped rails on swim platform
- Engine alarm system, audio oil and temperature
- Engine hour meters
- Complete engine instrumentation, two stations
- Hydraulic steering system
- Kahlenberg triple air horn
- Hydraulic Stabilizers
- Hydraulic Bow and Stern Thrusters with proportional controls at both helm stations.
- Cockpit controls

- SS 125 lbs CQR anchor
- Hydraulic Anchor windlass with remote controls at both stations

Electronics

- KEP Levathan Nav Computer
- (2) 17" KEP glass bridge displays at Flybridge helm
- (3) 19" KEP glass bridge displays at Pilothouse helm
- Nobletec navigation
- Furuno nav/radar and sounder
- (4) Furuno RD-30 displays throughout
- SIMRAD autopilot
- (2) ICOM VHF w/remote microphones
- (2) Aft deck cameras and (1) Engine Room camera
- XM weather
- KEY power stabilizer displays at both helm stations

Electrical System

- Heavy-duty batteries, 4 each AGM 8D batteries for engines, 4 AGM 8D batteries for house bank, AGM 4D battery for generator
- Engine battery disconnect switch
- Battery paralleling system with control switch
- Service battery switch
- 4000W Victron inverter/charger (pure sine wave)
- GFI reset in the main electrical panel
- Vimar switches & outlets
- 24V lights in all compartments
- Polarity reverse indicating light
- Marine-grade, tinned copper wiring
- A/C outlets throughout
- Volt and amp meters
- Bonding system throughout
- AC/DC distribution panel with magnetic circuit breakers
- Shore power receptacle 100 + 50 amp in transom with cable master
- Phone jacks at master stateroom & salon
- Dimmers for salon & master stateroom sconces
- 24 Volt system
- Central Vacuum System

Engine Room

- C-32 CATERPILLAR ENGINES with CAT PLATINUM PLUS engine warranty through June-2017
- Headhunter pressure fresh-water system
- Headhunter sea water system
- (2-)New Stainless Steel 30-gallon water heaters
- 24V shower sump pumps
- Fuel polishing system
- Power Steering system
- Fire Extinguishing system with auto-shutdown.
- Y-valve engine driven bilge pump
- Dripless seal for rudder post
- Aluminum fuel tanks with sight gauges
- Stainless steel water tank with sight gauge
- Holding tank plumbed dockside for overboard discharge
- Common drainage system for sink, shower, bilge & exterior deck
- Fresh-water outlet with hose for engines & generator
- One manual bilge pump
- Dockside water connection
- Engine room high-water bilge alarm
- Dripless engine shaft seal logs
- Lighted bilge
- Holding tank gauge in pilot house
- Both side fillers for water & fuel tanks
- Stainless cap on transverse stringers in central walkway
- Deco panels on sides of engine room
- Stainless steel rail on side of engine
- Sylomer floating floor system
- Sea cocks and raw water strainers on all intakes
- Engine room 3" lead/foam sound insulation
- Dual Racor fuel/water separators on Engines and Generators
- Complete Delta "T" engine room positive pressure system with pressure sensors, logic computer & variable speed fans
- Engine isolation switches
- Herone rubber flooring in engine room
- AC/DC lights with anti-explosion type in engine room
- A/C outlet
- Two - Victron 4000Winvertor/charger system
- (2) ISO boost transformers
- Tank Tender for (4) tanks
- Color-coded piping for fuel, water & hydraulic system
- Underwater exhaust system
- (4) Electric bilge pumps, 24V auto & manual switch, sumped when available
- Oil change system for engines and generators
- (3) valves in steering system for autopilot

- AQUA Air Chillers and Cruise Air Handlers throughout w/ECU controls
- Toilet discharge loop vented to overboard
- Spare conduit running from engine room to pilothouse, engine to fly bridge & engine room to fly bridge overhang
- Detailed stringers in engine room & lazarette
- Dry bilge area arrangement in center of engine room

Accommodations & Interior

- Sakura paneling & cabinetry
- Soft vinyl headliners
- Push-button handles for drawers & cupboards
- Round top corners, cabin entrances doors
- Hidden hinges on cabinet doors
- Burl deco striping under counter in salon & staterooms
- Stained teak for window frames and bull-nose
- Inner spring mattresses for all berths
- Painted flooring prepared for carpet, except accent flooring in pilot house, head & galley
- Hi-gloss SAKURA wood interior finish
- Hanging lockers with dual-locking mechanism
- Circular steps to lower deck
- Stainless steel hardware
- Flip-up berth storage and Drawers in Master, VIP and Guest State rooms

Salon

- 40" Plasma television with Sony audio/DVD system
- ONKYO sound system (New)
- Pinnacle Sub Woofer
- High-low table with burl-wood top
- Ice maker inside locker
- Loose end tables with two Barrel Chairs
- Hi-Lo coffee table
- 24V halogen lights
- Wine cooler behind solid panel door

Galley

- Granite/marble countertops
- Storage cabinets & drawers
- Franke double sink with faucet

- Tube light under counter
- Disposal & lazy susan in corner
- SEAGULL water purifier
- Sakura cabinetry
- Dedicated trash compartment
- SUB-ZERO refrigerator and Freezer
- Full-size microwave/convection oven
- 27" Gaggenau electric cooktop
- 24" Gaggenau electric oven
- 12" Broan trash compactor
- Drawer-type shelves in large galley cabinet
- Overhead dish locker forward
- (2) Fisher & Paykel dishwashers

Master Stateroom

- King-sized berth with inner spring mattress
- Finished storage under King - sized berth
- Ultraleather-upholstered headboard
- New carpet
- (2) Night stands
- Large storage drawers under MSR bed
- Chest of drawers on both out board sides of master.
- 24V halogen lights
- His & her head with large shower in the middle & vanity
- Full-height, cedar-lined hanging lockers with automatic lighting
- Tube lights under bunk
- 37" HDTV with audio/DVD/SAT system
- Dressing mirror
- Stainless steel oval portholes with screens
- Safe in hanging locker
- Gun safe

Forward Guest Stateroom

- Queen-sized berth with innerspring mattress
- (2) Drawers under bed
- 24V halogen lights
- Sony DVD/CD audio stereo & video system
- 20" LCD television
- Cedar-lined hanging lockers with automatic lighting
- Dressing mirror

- Tube light under bunk & behind valance
- Stainless steel oval portlight with privacy screen

Port Guest Stateroom

- Side-by-side lower berths, fabric covered
- Head opposite starboard with stall shower
- Tube light behind valance
- Cedar-lined hanging locker with automatic lighting
- Dressing mirror
- Stainless steel oval port light with privacy screen

Crew Quarters

- Captain's cabin with double bed
- Cedar-lined hanging locker with automatic lighting
- Galley (sink, microwave & refrigerator)
- 20" LCD television with DVD/CD audio stereo & video system
- Storage locker
- Drawers under bunk
- Secondary access via cockpit seating
- Maytag 2400 AWW stacked washer/dryer
- Head with stall shower
- Dive Tank racks in Lazz

Heads

- Sakura walls & cabinets with granite or marble countertops
- 24V light
- China sink
- Grohe faucet for sink & shower
- Waterproof draperies
- Keuco bathroom fixtures
- Mirrored sliding cabinet door under head port light
- Mirrored door on medicine cabinet
- Head Hunter toilet system
- Vent blower
- Steamless fiberglass stall shower with one-piece glass door

- Stainless steel oval portlight with screen
- GFI (110V only) A/C outlet

Pilot House

- Sunken & extended dash with instrumentation
- U-shaped dinette with chart drawer beneath
- Burl-wood top table with storage cabinet beneath
- Dinette with overhead feature ceiling
- Sakura plank flooring with ebony border
- Windshield defrosters
- Sliding, water-tight doors to side deck
- 24V halogen lights
- Teak electronics mounting panel overhead
- Custom-designed pilot station with black Ultraleather & teak accents

Exclusions

Owner's personal belongings.

Disclaimer

The Company offers the details of this vessel or yacht in good faith but cannot guarantee or warrant the accuracy of this information nor warrant the condition of the vessel. A buyer should instruct his representatives, agents, or his surveyors, to investigate such details as the buyer desires validated. This vessel or yacht is offered subject to prior sale, price change, or withdrawal without notice.

PHOTOS

Running Profile



Anchored Profile



Salon



Salon



Salon



Galley/Pilothouse



Galley



Pilothouse Side Door



Dinette / Pilothouse



Helm



Master Stateroom



Master Stateroom



Master Stateroom Head

Master Stateroom His & Her Head



VIP Stateroom



VIP Head



Guest Stateroom



Guest Stateroom



FlyBridge



Flybridge



Flybridge



Flybridge Helm



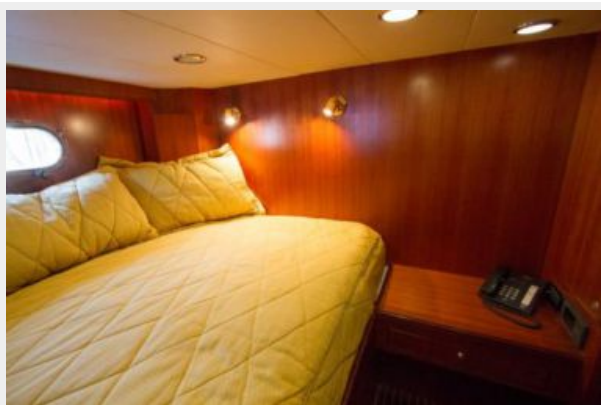
Tender



Aft Deck



Crew Stateroom



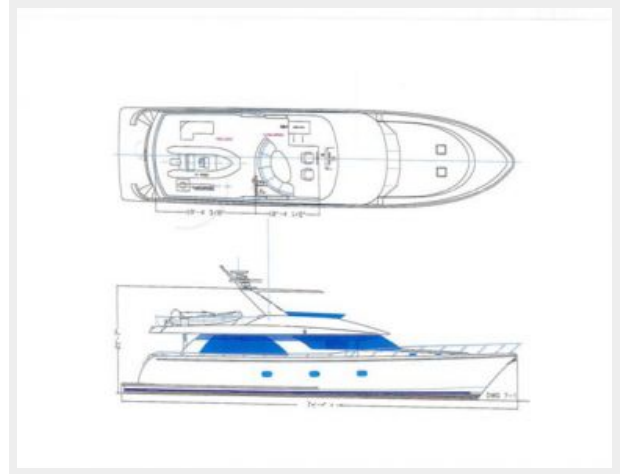
Crew Galley



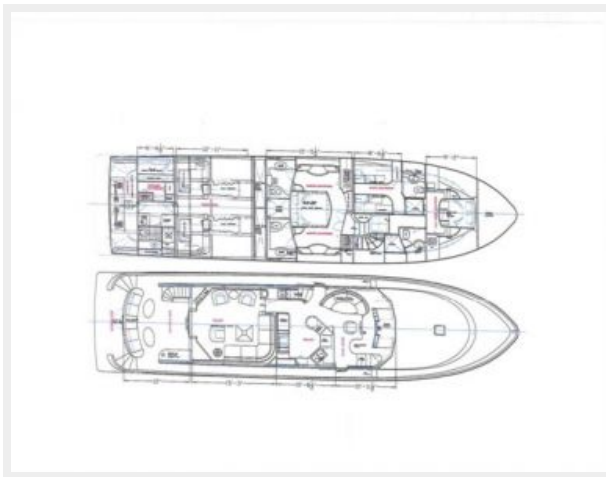
Engine Room



Layout



Layout



At Home



Bahamas



CONTACTS

Andrey Shestakov, leading yacht broker of the sales department of Shestakov Yacht Sales Inc. Shestakov Yacht Sales Inc., the official representative of the Miami/Fort Lauderdale FL headquarters.

Contact details

Email: andrey@shestakovyachtsales.com

Web: shestakovyachtsales.com/en/

Telephones

USA: +1(954)274-4435

Office hours

Monday – Saturday: **9:00 - 21:00** EDT

Sunday: **closed**

Address



Harbour Towne Marina, 850 NE 3rd St,
STE 213, Dania, FL 33004