

# NATITA \*NAME RESERVED\* — OCEANCO



**Builder:** OCEANCO

**Year Built:** 2005

**Model:** Motor Yacht

**Price:** PRICE ON APPLICATION

**Location:** United States

**LOA:** 216' 7" (66.00m)

**Beam:** 39' 1" (11.90m)

**Max Draft:** 16' 5" (5.00m)

**Cruise Speed:** 13 Kts. (15 MPH)

**Max Speed:** 16 Kts. (18 MPH)

Our experienced yacht broker, Andrey Shestakov, will help you choose and buy a yacht that best suits your needs **NATITA \*Name Reserved\*** — **OCEANCO** from our catalogue. Presently, at Shestakov Yacht Sales Inc., we have a wide variety of yachts available on our sale's list. We also work in close contact with all the big yacht manufacturers from all over the world.

If you would like to buy a yacht **NATITA \*Name Reserved\*** — **OCEANCO** or would like help answering any questions concerning purchasing, selling or chartering a yacht, please call **+1(954)274-4435**

# TABLE OF CONTENTS

TABLE OF CONTENTS	2
SPECIFICATIONS	5
Overview	5
Basic Information	5
Dimensions	5
Speed, Capacities and Weight	5
Accommodations	6
Hull and Deck Information	6
Engine Information	6
DETAILED INFORMATION	7
Overview	7
Machinery	8
Communications and Navigation	8
Entertainment	9
Galley & Laundry Equipment	9
Tenders and Toys	10
Deck Equipment	10
Security, Fire Fighting & Safety Equipment	10
Broker's Comment	11
Exclusions	11
Exclusions	11
Disclaimer	11
PHOTOS	13
Main Salon	13
Main Salon	13
Main Salon	13
Formal Dining	13
Formal Dining	13

Main Deck Cinema	13
Main Deck Cinema	14
Master Suite	14
Master Living Area	14
Master Living Area	14
Master Office	14
Master Closet	14
Master Bath	15
Master Bath	15
VIP Closet	15
VIP Stateroom	15
VIP Bath	16
Guest Stateroom	16
Guest Head	16
Guest Stateroom	16
Guest Stateroom	16
Guest Stateroom	16
Guest Stateroom	16
Children/Staff Cabins	17
Children/Staff Cabins	17
Central Staircase / Main to Upper Deck	17
Pilothouse	17
Pilothouse	17
Skylounge	17
Skylounge Bar	18
Skylounge Formal Dining	18
Skylounge	18
Sun Deck with Helipad - Facing Forward	18
Sun Deck with Helipad	18
Sun Deck Facing Aft	18

---

Sun Deck Forward with Swim Spa	19
Swim Spa	19
Skylounge Aft Deck	19
Skylounge Aft Deck	19
Skylounge Aft Deck	19
Skylounge Aft Deck	19
Lower Deck Galley	20
Garage	20
Garage	20
Tenders and Toys	21
Garage	21
Engine Room	21
Engine Room	21
General Arrangement	22
General Arrangement	22
General Arrangement	23
CONTACTS	24
Contact details	24
Telephones	24
Office hours	24
Address	24

# SPECIFICATIONS

## Overview

NATITA's sophisticated exterior design makes her one of the most special and noticeable yachts on the water today. Her luxurious interior by Alberto Pinto is one of the most well-appointed interiors built with a great selection of woods, leather and fabrics all flowing in perfect harmony. The interior layout and volume is unmatched by any other vessel of her size, boasting 800 sqm/8,500 sq.ft. of interior guest space under air, not inclusive of crew, galley, storage, tender garage, etc.

## Basic Information

**Category:** Motor Yacht

**Model Year:** 2005

**Year Built:** 2005

**Refit Year:** 2012

**Country:** United States

**Helipad:** Yes

## Dimensions

**LOA:** 216' 7" (66.00m)

**Beam:** 39' 1" (11.90m)

**Max Draft:** 16' 5" (5.00m)

## Speed, Capacities and Weight

**Cruise Speed:** 13 Kts. (15 MPH)

**Max Speed:** 16 Kts. (18 MPH)

**Water Capacity:** 24500 Gallons

**Fuel Capacity:** 54000 Gallons

## Accommodations

---

**Total Cabins:** 8

**Sleeps:** 16

**Total Heads:** 12

**Captain Cabin:** True

**Crew Cabin:** 11

**Crew Sleeps:** 22

## Hull and Deck Information

---

**Hull Material:** Steel

**Hull Configuration:** Full Displacement

**Hull Designer:** Oceanco

**Exterior Designer:** Oceanco/Kusch Yachts

**Interior Designer:** Alberto Pinto

## Engine Information

---

**Engines:** 2

**Manufacturer:** Deutz

**Model:** MWM SBV 12M628

**Engine Type:** Inboard

**Fuel Type:** Diesel

---

# DETAILED INFORMATION

---

## Overview

---

NATITA is a 66m/216ft 1801 GRT motor yacht, custom built in 2005 by Oceanco. Previously DILBAR, she was built to the highest standards offered in the yachting industry. NATITA was purchased in 2009 by an experienced yachtsman and has been immaculately maintained by her captain and crew ever since. NATITA's sophisticated exterior design makes her one of the most special and noticeable yachts on the water today. Her luxurious interior by Alberto Pinto is one of the most well-appointed interiors built with a great selection of woods, leather and fabrics all flowing in perfect harmony. The interior layout and volume is unmatched by any other vessel of her size, boasting 800 sqm/8,500 sq.ft. of interior guest space under air, not inclusive of crew, galley, storage, tender garage, etc. NATITA's interior layout has incredible flow to all decks allowing easy access for guests to all public areas. Crew has complete access to public space from crew stairs and corridors behind the scenes that run to all decks on port. Guests can enter the vessel from the aft doors through the large main salon door or from the formal entry on starboard amidships. The main deck's grand salon is designed around handsome Macassar Ebony and Ash Sycamore wood paneling, nickel-plated highlighted features, beautiful low table centerpiece and complementary beige and brown fabrics. Her settees and chairs are the perfect combination of fabrics and leather. The main salon offers incredible light through her large windows. NATITA offers two interior dining rooms. The formal dining is found on the main deck forward of the main salon. This area seats 12 guests comfortably at her beautiful dark wood table with chairs framed in dark wood and light fabrics. The second inside dining for 12 is found in the sky lounge to port. The interior décor of the sky lounge and dining area is done in light woods and brilliant fabrics accented with elegant tones of blue and red. The sky lounge is a bright, cheery area with large floor to ceiling windows, a beautiful bar with butler's pantry for serving, and super comfortable settees and chairs in a setting designed for relaxation. There is a beautiful rare grand piano, one of only 400 in the world, found in the forward sky lounge. Through the sky lounge doors aft is a casual outdoor dining area with a large table which accommodates 12 or can be separated for two smaller parties and a nice comfortable outside seating area with settees, table and chairs. Walking forward in the spacious corridor from the grand salon on the main deck are two beautifully appointed king guest cabins to starboard with ensuite, large closet and ample storage. To port is a huge cinema room that accommodates 12 in incredibly comfortable chairs and loungers. Further down the corridor is the Master suite which is a huge full-beam area designed as a single Master or a Master/VIP depending on the usage with two large dressing rooms and large ensuite toilets. There is a large seating area to port with entertainment. The décor, with its beautiful dark woods and leather stitched walls, offers an elegant but comfortable and cozy feel. All decks can be accessed through a center grand spiral stairwell made of beautiful dark wood, leather covered steps and accented stainless handrails. Up the grand staircase from the main deck is the corridor of the bridge deck. Forward from here are two very spacious guest cabins, one to port and one to starboard. Both cabins have the ability to have a king berth or be separated to accommodate twins. Both are wonderfully appointed with ensuite, large hanging closets and ample storage. Continuing forward toward the pilothouse are

two additional cabins on either side with over and under berths and ensuite. These cabins are perfect for children in owner's parties or for additional staffing such as nannies, pilots, or security.

Further forward on the bridge one will find the large bridge area equipped with state of the art navigation and communication systems. The Sundeck can be reached from the interior grand stairwell. The sundeck is carefully designed around a unique scallop-shaped pool that also offers swim jet and Jacuzzi functions. The 16-ton pool is flanked by four wide steps in an overflow area, which allows guests to cool down simply by taking a seat in the shallow areas. Extensive cushioned seating offers sweeping open views over the bow of the yacht. Aft on the sundeck one will find welcome shade in the form of an informal seating and dining area provided under a canopy to the rear of the sundeck, along with additional sun-lounging opportunities around the helipad. The helipad area was built to the helicopter rated capacity of 3,000 KG or 6,600 lbs. It is perfect for sitting, lounging or entertaining when not being used for a helicopter. A fantastic, well-designed, fully-equipped beach club sits aft on the lower deck, providing easy access to the water with a vast array of watersports equipment. This area makes for a nice entry from the dock allowing guests to have access to the grand salon through an elegantly appointed interior stairwell. Forward of the beach club is a huge tender garage with three larger tenders, including a completely enclosed limousine perfect for running all guests to shore in a dry and comfortable environment. The elegant yet relaxed living areas throughout NATITA are a testament to the use of high-quality materials, exquisite finishing and exceptional attention to detail. The Alberto Pinto designed interiors are bold and dynamic, seamlessly blending old-fashioned craftsmanship and materials with cutting-edge style. \*Not for sale to U.S. residents while in U.S. waters\*

## Machinery

Main Engines 2 x 2250 kw (3.016hp) Deutz SBV 12M 628; Port: 11750 hrs. / Starboard: 11650 hrs. 2 x Reintjes WGF 1962 gear boxes 2 x 5-Bladed Nickel Bronze, Outboard turning drive shafts Speed Consump/hr Range Maximum: 13.5 525 liters per hour Cruising: 12.5 475 liters per hour Economical: 11 5,000 nm Generators and Electricity 340 KW Output 3 x Deutz 374 kw (501hp) TBD 616 V8 Generator Fuel Consumption: 50 liters per hour Shore Power: 400 Volts, 3 phase, 600 amps, 50 htz Batteries Main Engine Starting: Compressed Air Start Generator Starting: Compressed Air Start Emergency: 24 Volt Air Conditioning 4 x ANU, Chilled Water Central Other Machinery Watermakers: 2 x HEM, reverse osmoses, 24 tons per day Trim Tabs/Stabilizers: Quantum, 2200 XT, Zero Speed Bow Thruster: Bow / Schottel 110 LK ELAST, 175 KW, transverse thruster Stern / Schottel SPJ 82 RD Elast Pump Jet, 250kw, 360 degrees Steering System: 2 x 195 KGW Fuel Separator & Filtration: Alpha Laval Sewage System: Triton format 3 stage biological Fresh Water System: 68.5 metric tons Bilge Water Filtration: Oil water separator: NDF 1.0 meters cubed / UR 15ppm Lube Oil Capacity 3.5 metric tons or 3500 liters Waste Oil Capacity 4.2 metric tons or 4200 liters

## Communications and Navigation

### Communication Systems



SATcom:	Nera Inmarsat Fleet 77
Telephone System:	Panasonic telephone exchange
SSB:	Sailor HC 4500 MF/HF
VHF:	2 x Sailor RT4822 A1 VHF-DSC
Cellular Phone System:	2 x GSM Telular units with PICO Cell connection to the Panasonic telephone exchange
Other:	VOIP (Voice over the Internet Provider) system

## Navigation Systems

Radars:	Furuno: X and S band
Gyrocompass:	C Plath
Magnetic Compass:	C Plath
Auto Pilot:	C Plath
Depth Sounder:	Furuno
Weather Fax:	Furuno
GPS:	Simrad
Ships Computer:	Yes
Wind/Speed Log:	B&G Hydra 2000
Navtex:	Furuno

## Entertainment

---

### Video Equipment

Samsung, Toshiba, LG, Sharp all flat screen TV's

Kaleidescape central unit with over 200 GB, Crestron control system, Sky Satellite receivers and Dish Network, Cinema

### Audio Equipment

Stereo Sony Systems, Marantz Stero

Apple Airplay Kaleidescape Audio

## Galley & Laundry Equipment

---

### Main Galley Equipment

Cooking Equipment: Electrolux, Convotherm

Refrigeration/Freezer: Bespoke – Custom Made

Dishwasher: Miele

Crew Galley/Mess Equipment

Cooking Equipment: Microwave, toaster

Refrigeration/Freezer: Oceanco – Custom Made

Other: Miele dishwasher

Additional Galley Equipment 5x Icemakers on-board Laundry Equipment

Main Laundry Equipment Miele and Wesco

---

## Tenders and Toys

Tenders: 1 x 9.0M Custom built Royal Denship, twin diesel, Limo Tender (enclosed) 1 x 8.3M Custom built Royal Denship, single diesel, Open Sport Boat 1 x 5.5M Nautica R.I.B., single diesel jet drive 1 x 4.8M Zodiac Outboard Rescue Tender Recreation: 2 x Seabobs, water ski gear, inflatable slide, paddle boards Exercise Equipment: Star Trac Treadmill, Elliptical, Spinning bike, and free weights

---

## Deck Equipment

Anchor Windlass: Steen

Aft Warping Capstans: Steen

Anchors: Danforth type

Anchor Chain: Stud Link 7/8 thick

Boat Crane and Davits: Cramm & SMST

Passerelle: Cramm

Swimming Platform: Cramm

---

## Security, Fire Fighting & Safety Equipment

Security Equipment

CCTV System: Panasonic

Cameras: Panasonic

Monitors: Panasonic

Fire Fighting Equipment

Fire Control System: Danfoss Semco Semsafe HiFog System

Fire Extinguishers: Mix of CO2, Dry Chem, Water

Alarms: Thorn Minerva

### Safety Equipment

Life Rafts: 5 onboard

Life Rings: 8 onboard

EPIRBS: 2 onboard

Flares: Multiple hand, parachute type

Medical Equipment: Med Aire Ocean Crossing Class med kits

## Broker's Comment

---

NATITA, at 1801 GRT, has the volume of a much larger yacht than her 66m (216 feet), boasting 800sqm/8500sq. ft. of owner and guest accommodations. Her luxurious interior includes an on-deck master suite and VIP stateroom. In addition, there are four guest staterooms plus two extra staterooms that can be used by overflow guests, kids or owner's staff as needed. All of this space is wrapped in an exquisite Alberto Pinto interior that gives one a feeling of pure luxury. NATITA is a fully custom yacht with features that make her unique in many ways, from her canoe stern to her enormous bow. She was originally built by a very knowledgeable yachtsman to extremely high Northern European standards. Only the best engineering, finish and design were utilized in her construction. NATITA is meticulously maintained by her incredible captain and crew at the request of the owner who insists on perfection.

## Exclusions

---

Owner's personal effects and art work. A full inventory of exclusions to be provided at time of fully executed Purchase Agreement.

## Exclusions

---

Owner's personal belongings.

## Disclaimer

---

The Company offers the details of this vessel or yacht in good faith but cannot guarantee or warrant the accuracy of this information nor warrant the condition of the vessel. A buyer should instruct his representatives, agents, or his surveyors, to investigate such details as the buyer

desires validated. This vessel or yacht is offered subject to prior sale, price change, or withdrawal without notice.

# PHOTOS

**Main Salon**



**Main Salon**



**Main Salon**



**Formal Dining**



**Formal Dining**



**Main Deck Cinema**





**Main Deck Cinema**



**Master Suite**



**Master Living Area**



**Master Living Area**



**Master Office**



**Master Closet**



**Master Bath**



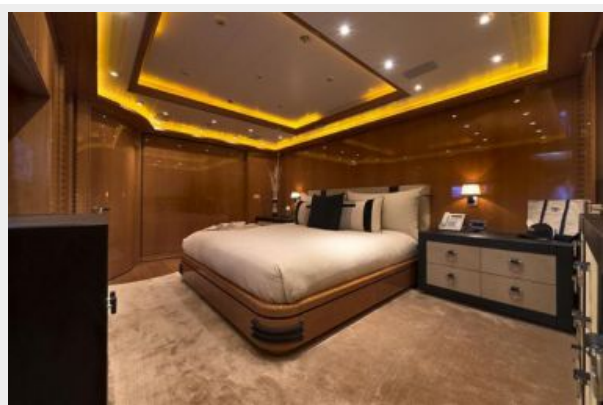
**Master Bath**



**VIP Closet**



**VIP Stateroom**





**VIP Bath**



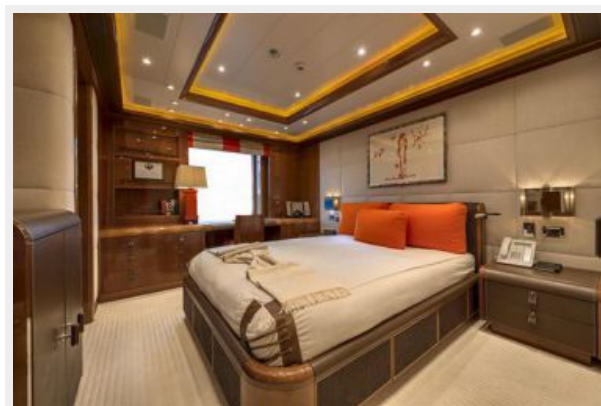
**Guest Stateroom**



**Guest Head**



**Guest Stateroom**



**Guest Stateroom**



**Guest Stateroom**





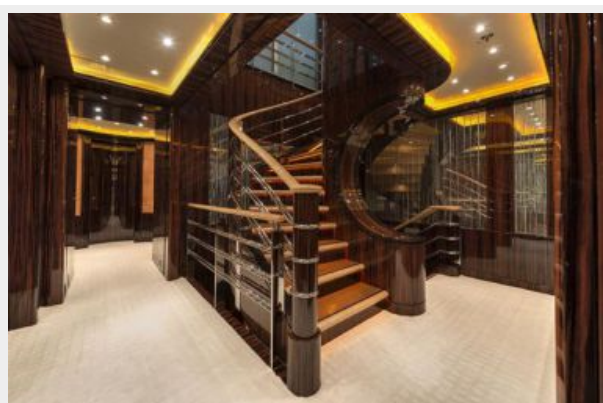
**Children/Staff Cabins**



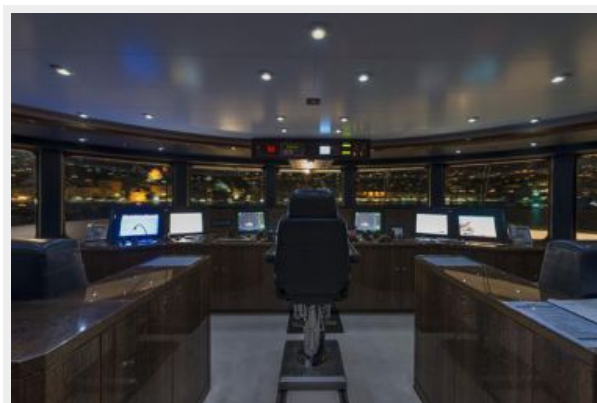
**Children/Staff Cabins**



**Central Staircase / Main to Upper Deck**



**Pilothouse**



**Pilothouse**



**Skylounge**



**Skylounge Formal Dining**



**Skylounge Bar**



**Skylounge**



**Sun Deck with Helipad - Facing Forward**



**Sun Deck with Helipad**



**Sun Deck Facing Aft**





**Sun Deck Forward with Swim Spa**



**Swim Spa**



**Skylounge Aft Deck**



**Skylounge Aft Deck**



**Skylounge Aft Deck**



**Skylounge Aft Deck**

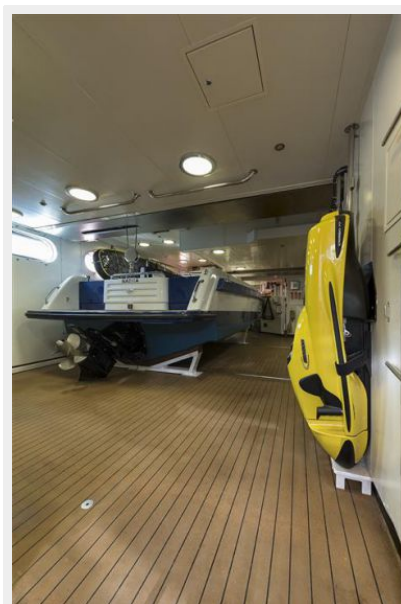


**Lower Deck Galley**



**Garage**

**Garage**



**Garage**



**Tenders and Toys**



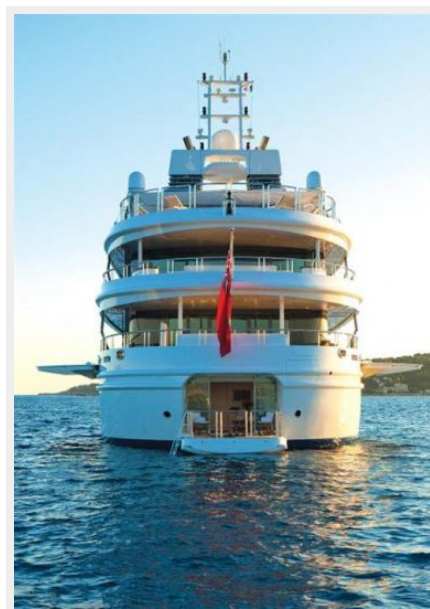
**Engine Room**



**Engine Room**



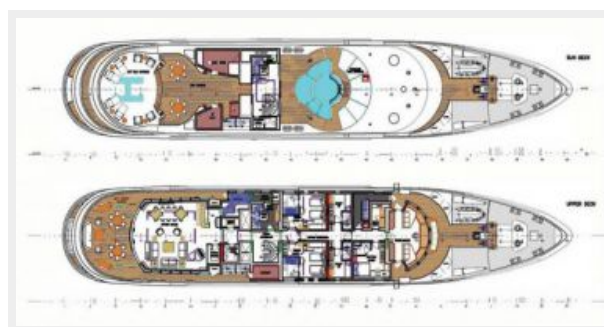




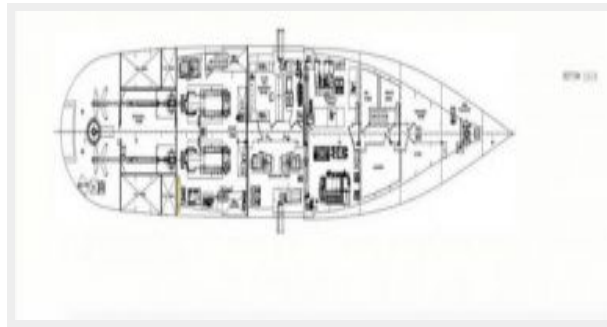
**General Arrangement**



**General Arrangement**



## General Arrangement



# CONTACTS

---

Andrey Shestakov, leading yacht broker of the sales department of Shestakov Yacht Sales Inc. Shestakov Yacht Sales Inc., the official representative of the Miami/Fort Lauderdale FL headquarters.

## Contact details

---

Email: **andrey@shestakovyachtsales.com**

Web: [shestakovyachtsales.com/en/](https://shestakovyachtsales.com/en/)

## Telephones

---

USA: **+1(954)274-4435**

## Office hours

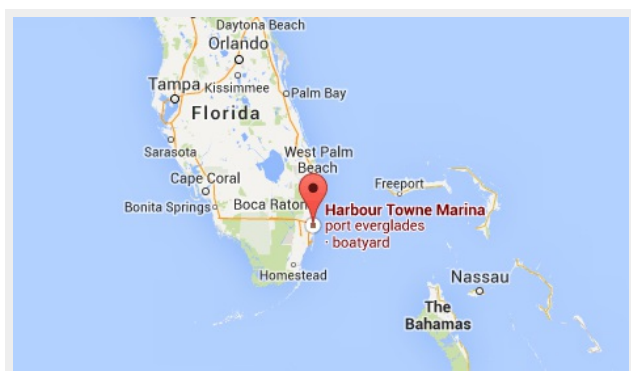
---

Monday – Saturday: **9:00 - 21:00 EDT**

Sunday: **closed**

## Address

---



Harbour Towne Marina, 850 NE 3rd St,  
STE 213, Dania, FL 33004