

## FIRST HOME — CHEOY LEE



**Builder:** CHEOY LEE

**Year Built:** 1988

**Model:** Motor Yacht

**Price:** PRICE ON APPLICATION

**Location:** United States

**LOA:** 91' 11" (28.02m)

**Beam:** 21' 6" (6.55m)

**Max Draft:** 5' 9" (1.75m)

**Cruise Speed:** 11 Kts. (13 MPH)

**Max Speed:** 16 Kts. (18 MPH)

Our experienced yacht broker, Andrey Shestakov, will help you choose and buy a yacht that best suits your needs **FIRST HOME — CHEOY LEE** from our catalogue. Presently, at Shestakov Yacht Sales Inc., we have a wide variety of yachts available on our sale's list. We also work in close contact with all the big yacht manufacturers from all over the world.

If you would like to buy a yacht **FIRST HOME — CHEOY LEE** or would like help answering any questions concerning purchasing, selling or chartering a yacht, please call **+1(954)274-4435**

# TABLE OF CONTENTS

TABLE OF CONTENTS	2
SPECIFICATIONS	4
Overview	4
Basic Information	4
Dimensions	4
Speed, Capacities and Weight	4
Accommodations	5
Hull and Deck Information	5
Engine Information	5
DETAILED INFORMATION	6
Overview	6
Salon	6
California Deck	6
Master Stateroom	6
VIP Stateroom	6
Twin Guest Staterooms 1 & 2	7
Galley	7
Fly Bridge	7
System Upgrades	7
Electrical	8
Machinery	8
Deck Equipment	9
Exclusions	9
Disclaimer	9
PHOTOS	10
Salon	10
Salon	10
Salon TV	10

---

Master Stateroom	10
Master Stateroom	10
Master Bathroom	10
VIP Stateroom	11
VIP Stateroom	11
VIP Bathroom	11
Guest Stateroom Port	11
Guest Stateroom Starboard	11
Galley	11
California Deck	12
Flybridge	12
CONTACTS	13
Contact details	13
Telephones	13
Office hours	13
Address	13

---

# SPECIFICATIONS

---

## Overview

---

With essentially two Master Staterooms this yacht offers true designer appeal in a simple and elegant manner in this 4 stateroom yacht accommodating 8 guests. Guests will feel an aesthetic appeal from the subtle artistic touches to the beautiful warm maple and walnut floors welcoming you into the yacht. First Home has been meticulously cared for by her owner of the last ten years. Most major systems are new or rebuilt since 2013, creating a smooth entry into the charter market in 2014. After ten weeks of charter in her first year, she has six weeks so far in 2015 and her reputation continues to grow in the Florida and Bahamas market.

## Basic Information

---

**Category:** Motor Yacht

**Sub Category:** Flybridge

**Model Year:** 1988

**Year Built:** 1988

**Refit Year:** 2013

**Country:** United States

**Fly Bridge:** Yes

**Cockpit:** Yes

## Dimensions

---

**LOA:** 91' 11" (28.02m)

**Beam:** 21' 6" (6.55m)

**Max Draft:** 5' 9" (1.75m)

## Speed, Capacities and Weight

---

**Cruise Speed:** 11 Kts. (13 MPH)

**Cruise Speed Range:** 1100

**Max Speed:** 16 Kts. (18 MPH)

**Displacement:** 170000 Pounds

**Gross Tonnage:** 139 Pounds

**Water Capacity:** 1800 Gallons

**Fuel Capacity:** 3000 Gallons

**Fuel Consumption:** 30 Gallons

---

## Accommodations

---

**Total Cabins:** 4

**Total Berths:** 6

**Sleeps:** 8

**Total Heads:** 6

**Captain Cabin:** True

**Crew Cabin:** 2

**Crew Berths:** 4

**Crew Sleeps:** 4

**Crew Heads:** 1

---

## Hull and Deck Information

---

**Hull Material:** Fiberglass

**Deck Material:** Fiberglass

**Hull Color:** Matterhorn White and Anthracite Grey 3M wrap

**Hull Finish:** Fiberglass

**Hull Designer:** Tom Fexas

**Interior Designer:** Modern Yachts

---

## Engine Information

---

**Engines:** 2

**Manufacturer:** Detroit Diesel

**Model:** 12V-71 TI

**Fuel Type:** Diesel

---

# DETAILED INFORMATION

---

## Overview

---

With essentially two Master Staterooms this contemporary yacht offers true designer appeal in a simple and elegant manner. This yacht comfortably accommodates 8 guests in 4 staterooms . Guests will feel an aesthetic appeal from the subtle artistic touches to the beautiful warm maple and walnut floors welcoming you into the yacht. First Home has been meticulously cared for by her owner of the last ten years. Most major systems are new or rebuilt since 2013, creating a smooth entry into the charter market in 2014. After ten weeks of charter in her first year, she has six weeks so far in 2015 and her reputation continues to grow in the Florida and Bahamas market.

## Salon

---

With it's beautiful maple and walnut floors and various seating options guests have a myriad of places to relax. There is a long settee along the port side. A custom island seating area containing a 60" LCD HD TV, Apple TV and Blu-Ray DVD are all cleverly concealed beneath. To starboard sits a round contemporary acrylic table and chairs. Bar stools forward along the galley wall are great for comfortable entertaining or chatting with the chef about tonight's menu. Forward to port is the day head with a modern vessel sink and fixtures.

## California Deck

---

Exiting aft through the sliding salon doors is a California deck on the same level as the salon. The California deck has a settee and two convertible tables that connect to make a lovely long dining table comfortably seating ten. The tables also convert to two coffee tables which, along with a wet bar make this a great area for entertaining. This area is fully enclosed with isinglass and a new air conditioning system for comfort. Down steps aft is the cockpit with grills, helm and transom door.

## Master Stateroom

---

Below the salon is the full width MASTER stateroom. Contemporary furnishings and a continuation of the beautiful maple and walnut flooring make this a bright and airy space. There is a California King sized bed, settee, desk and hanging lockers. The HD flat screen TV and Blu-ray DVD player are tastefully concealed behind a sliding panel. Ensuite are his and hers bathrooms each side with toilets, vanity sink and choice of shower stall(his) or tub/shower(hers).

## VIP Stateroom

---

Forward below deck is the VIP stateroom with clean crisp furnishings and again the warmth of beautiful maple and walnut decking. There is a King size bed with walk in closet, desk, settee and HD flat screen TV, Apple TV and Blu-ray DVD. Forward is the artistically modern ensuite bathroom with vanity sink, toilet and jacuzzi tub including shower.

---

## Twin Guest Staterooms 1 & 2

---

There are two guest staterooms mid-ships each fitted with twin beds, hanging lockers, HD TVs, Blu-ray players, Apple TV's and interconnecting Xbox 360 gaming consoles. The ensuite heads are fitted with Royal Flush toilets, stall showers and Vanity sinks.

---

## Galley

---

A true Chef's Galley with commercial grade stainless steel appliances and fixtures. A customizable refrigerator/freezer system adapts to suit the chef's needs - useful when provisioning for those extended trips. There is an open serving area to the Salon making for fun interactions or demonstrations from the Chef. This can also be closed off for more formal occasions. The galley is carefully designed to maximize both storage and counter space. There is also ample pantry space for tableware. Galley equipment includes:

- Viking 4-burner stove/oven
- 2 x Miele dishwashers
- 4 x Custom refrigerator/freezer
- Sharp microwave/convection oven
- Caesar Stone countertops
- Double stainless steel sink
- 2 x washer, 2x dryer (Maytag/LG) (1 in crewmess)
- Miele Grill (outdoor)

---

## Fly Bridge

---

Returning back through the starboard pilothouse weather deck door forward is the fore deck with steps leading to the flybridge. The flybridge is fitted with helm, navionics, dinette and storage lockers. This area is enclosed partially with isinglass. Aft is the boat deck with two Sea-Doo Spark PWC, Novurania RIB, 2 kayaks and Steelhead hydraulic davit. This area can be converted into a lounging area if at anchor. The foredeck is a vast area with ample seating and lounging pads that can be used for guests giving great views while anchored or underway in calm cruising environments.

---

## System Upgrades

---

- Forward Generator Rebuild - July 2013

- Main Engine Rebuilds - November 2014
- New Naiad Stabilizers with extra large fins - March 2013
- New Upsized Fire Suppression Systems/Alarms - April 2013
- New Headhunter System & Toilets - March 2013
- New MSD - April 2013
- New Chiller Units - October 2013
- Air Handlers - new or rebuilt 2014/2015
- Navigation Electronics new - October 2014
- Electrical Power Upgrade - March 2013
- Bottom Paint/Running Gear/Bearings - August 2015
- New Props - November 2014
- New Main Generator - July 2013
- AV & VSAT - November 2014

## Electrical

The vessels DC power is supplied by a battery source while the AC power is supplied by either a 200 Amp or 2 x 100 Amp single phase shore power inlet with new isolation transformers or by one of two Northern Lights 30 or 20 Kw gensets. The vessels electrical system is branch overload protected via resettable circuit breakers and or replaceable fuses. Navigation Lights: International Electric Number of Batteries: 2-4D (sealed); 6-8D (lead acid) Boxed :Yes Voltage: 12 & 24 VDC; 115/ 230 VAC DC Wiring: 2-Wire Copper Stranded Sheathed Circuit Protection: Breakers & Fused AC Wiring 3-Wire Copper Stranded Sheathed Breaker Panels located Pilothouse, Crew companionway, Saloon, Engine Room Main AC Breaker Capacity: 100 Amp Additional Electrical Equipment: AC & DC Ammeters; AC Hertz Meter; 5-Battery Disconnect Switches Newmar PT 24-40 Phase Three Charger Newmar PT 14 Charger: Battery Parallel Solenoid 2 x Acme 25 Kva Isolation Transformers 2 x 100 Amp 125/250 VAC Shore Power Inlets Newmar PT-40U Charger 2 x 100 Amp Shore Power Cords Newmar PT 24-45U Charger

## Machinery

This vessel is powered by a pair of Detroit Diesel 12V-71 diesel engines, each producing approximately 900 horsepower. The main engines are driving a pair of ZF BW 195 reduction gear transmissions turning a ratio of 2.0:1. The main engines and new 30 Kw Northern Lights genset are located beneath the salon sole in a compact engine room. The main engines were completely rebuilt in 2014. There's a 20 Kw Northern Lights genset which is located forward within the port machinery room. The main engines are controlled by a Hynautic hydraulic system. The main engine exhaust is wet and exits below the waterline with low speed bypass exiting mid ship along with the gensets. The fuel system consists of three integral fiberglass tanks plumbed to the machinery via neoprene hose and selector manifold along with Racor primary fuel filters. The system is also fitted with a transfer pump, gallon meter and additional Racor fuel filter along with priming pumps and Algae X fuel conditioner.



---

## Deck Equipment

---

- Novurania RIB tender 14' with Yamaha 70 HP 4 stroke engine
- 2 x 2015 Sea-Doo Spark Jetskis
- 2 x Seadoo Explorer X Dive Scooters (up to 3.3 kt speed)
- 2 x Kayaks (single)
- Surfboard
- 2 x 12" Jimmy Styks Big Bro stand up paddleboards
- 3-person inflatable towable
- Waterskis
- Snorkel, Fins and Masks
- Fishing gear

Anchors: 80Kg Bruce 9primary); 1 x Fortress FX 125 (aft) Spare Anchor: 3-strand rope Chain Size Length 5/8 Galvanized (300'rpt) rode size length Windlass: Maxwell 4500 Vertical Hydraulic Naiad Bowthruuster Search Light: 2 x ACR RCL-100 Swimstep: Fiberglass Bell 8" Chrome Horn: Dual Trumpet Air

---

## Exclusions

---

Owner's personal belongings.

---

## Disclaimer

---

The Company offers the details of this vessel or yacht in good faith but cannot guarantee or warrant the accuracy of this information nor warrant the condition of the vessel. A buyer should instruct his representatives, agents, or his surveyors, to investigate such details as the buyer desires validated. This vessel or yacht is offered subject to prior sale, price change, or withdrawal without notice.

# PHOTOS

Salon



Salon



Salon TV



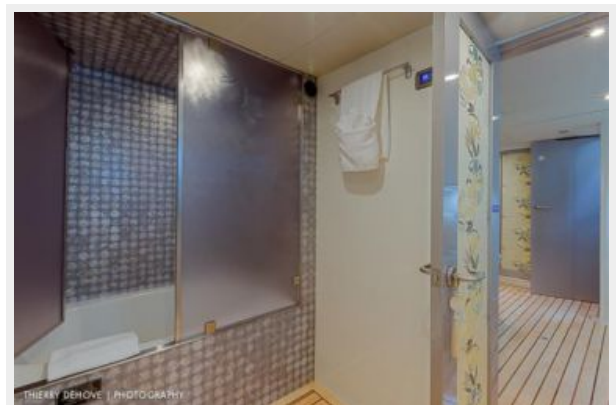
Master Stateroom



Master Stateroom



Master Bathroom



**VIP Stateroom**



**VIP Stateroom**



**VIP Bathroom**



**Guest Stateroom Port**



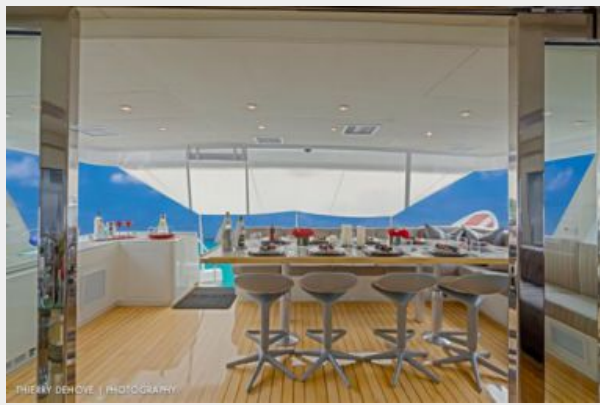
**Guest Stateroom Starboard**



**Galley**



### California Deck



### Flybridge



---

# CONTACTS

---

Andrey Shestakov, leading yacht broker of the sales department of Shestakov Yacht Sales Inc. Shestakov Yacht Sales Inc., the official representative of the Miami/Fort Lauderdale FL headquarters.

---

## Contact details

---

Email: [andrey@shestakovyachtsales.com](mailto:andrey@shestakovyachtsales.com)

Web: [shestakovyachtsales.com/en/](http://shestakovyachtsales.com/en/)

---

## Telephones

---

USA: +1(954)274-4435

---

## Office hours

---

Monday – Saturday: **9:00 - 21:00** EDT

Sunday: **closed**

---

## Address

---



Harbour Towne Marina, 850 NE 3rd St,  
STE 213, Dania, FL 33004