

## JUST N' TIME — CARVER



**Судостроитель:** CARVER

**Год постройки:** 2001

**Модель:** Моторная яхта

**Цена:** ЦЕНА ЯХТЫ ПО ЗАПРОСУ

**Местонахождение:** United States

**Длина общая:** 46' 0" (14.02m)

**Ширина:** 14' 11" (4.55m)

**Мин. осадка:** 3' 7" (1.09m)

Купить **Just n' Time — CARVER** а также выбрать подходящую вам яхту из нашего каталога яхт вам поможет опытный яхтенный брокер Андрей Шестаков. На сегодняшний день компания **Shestakov Yacht Sales Inc.** имеет большое количество яхт в собственном списке продаж, а также тесно сотрудничает со всеми крупными яхтенными производителями по всему миру.

Для того чтобы купить яхту **Just n' Time — CARVER** а также проконсультироваться по любому вопросу связанному с покупкой, продажей, чартером яхт позвоните по телефону **+7(918)465-66-44**.

# ОГЛАВЛЕНИЕ

ОГЛАВЛЕНИЕ	2
ХАРАКТЕРИСТИКИ	6
Обзор	6
Основная информация	6
Размеры	6
Скорость, вместимость и масса	7
Размещение	7
Корпус и палуба	7
Информация о двигателе	7
ПОДРОБНОЕ ОПИСАНИЕ	8
Vessel Description	8
Vessel Walkthrough	8
Key Features	9
Galley & Laundry	9
Electronics & Navigation Equipment	10
Electrical System	10
Deck Equipment	11
Mechanical Equipment	12
Exclusions	13
Исключения	13
Отказ от ответственности	13
ФОТОГРАФИИ	14
Aft Salon	14
Aft Salon	14
Port Salon	14
Office	14
Port Salon	14
Port Salon	14

Port Salon	15
Starboard Salon	15
Starboard Salon	15
Starboard Salon	15
Starboard Salon	15
Starboard Salon	15
Starboard Salon	16
Flatscreen TV	16
Main Distribution Panel	16
Genset Controls	16
Galley	16
Galley	16
Galley Storage	17
Galley	17
Stove and Oven	17
Microwave	17
Trash Compactor	17
Washer/Dryer Combo	17
Master Stairs	18
Master Stateroom	18
Master Stateroom	18
Master Stateroom	18
Master Stateroom	18
Master Head	18
Master Vanity	19
Master Head	19
Master Shower	19
Forward Berth	19
Forward Closet	20

Forward TV	20
Forward Head Entry	20
Forward Head	20
Master Head	21
Forward Sink	21
Starboard Berth	21
Starboard Berth	21
Main Helm	22
Helm Console	22
Stidd Double Chair	22
Double Stidd Helm Seat	22
Helm Bridge AC	22
Garmin 5212	22
Engine Room Entry	23
Engine Room	23
Engine Room	23
Engine Room	23
Engine Room	24
Engine Room	24
Engine Room	24
Engine Room	24
Engine Room	24
Engine Room	24
Engine Room	24
Engine Room	25
Engine Room	25
Engine Room	25
3945 Hours on Genset	25
Aft Cockpit	25
Aft Cockpit	25

Aft Deck	26
Aft Deck	26
Aft Deck	26
Foredeck	26
MarQuipt 45 Degree Included	27
MarQuipt Steps Included	27
Portside at Dock	27
Starboard Side at Dock	27
Underwater Lights	28
Wide Walkways	28
Aft Port Quarter	28
Port Profile	28
Starboard Bow	28
Starboard Profile	28
Stern	29
Starboard Profile	29
Transom	29
Achillies Rib Tender w/ 25 Mercury	29
Layout	29
<b>КОНТАКТЫ</b>	<b>30</b>
Контактная информация	30
Телефоны	30
Время работы	30
Адрес	30

---

# ХАРАКТЕРИСТИКИ

---

## Обзор

---

***Aggressively Priced at \$199,000!***

***Bridge A/C***

***3rd Stateroom or Additional Storage***

***Achilles RIB 10'4" 2005 dinghy w/ Mercury 2 stroke 25 HP (Recently Serviced & with NEW Cover) Freedom Lift***

***Updated Garmin Color Plotter***

***Full Engine and Generator Services 6/15 All A/C's serviced 5/15 Water maker (Recently Serviced 6/15) Port side desk office with fridge***

***Satellite TV System***

***Fresh Professional Detail completed 8/15***

***Aft deck TV***

***New Kenwood marine Bluetooth stereo on Bridge***

***Trash Compactor***

***Underwater Lighting***

***Excellent condition***

---

## Основная информация

---

**Тип судна:** Моторная яхта

**Модельный год:** 2001

**Год постройки:** 2001

**Страна:** United States

---

## Размеры

---

**Длина общая:** 46' 0" (14.02m)

**Ширина:** 14' 11" (4.55m)

**Мин. осадка:** 3' 7" (1.09m)

---

## Скорость, вместимость и масса

---

**Вместимость воды:** 130 Gallons

**Объем топливного бака:** 480 Gallons

---

## Размещение

---

**Всего кают:** 3

**Всего ком. состава:** 2

---

## Корпус и палуба

---

**Материал корпуса:** Fiberglass

---

## Информация о двигателе

---

**Двигатели:** 2

**Производитель:** Cummins

**Модель:** 6CTA8.3M

**Тип двигателя:** Inboard

**Тип топлива:** Diesel

---

# ПОДРОБНОЕ ОПИСАНИЕ

---

## Vessel Description

---

Here is an opportunity to own a beautiful and very well cared for Carver 466 Motor Yacht at an amazing price. This three stateroom / two head vessel performs and looks great as the seller actively runs and takes care of her. There's an astonishing amount of living space in the 466 as the side decks are raised to eye level which give the yacht an enormous full-width salon and one whose dimensions rival much larger vessels. She offers bridge A/C, a Freedom Lift with Achilles Rib Tender, Water maker, Sat TV, Excellent Electronics and much, much more. Most importantly all of her services are up to date and she is ready for her next owner.

## Vessel Walkthrough

---

Boarding the vessel is made easy by the port and starboard wing gates with the adjustable MarQuipt boarding ladder that can be installed either at 45 degrees or straight on. The wide non-skid decks provide easy access to the bow or aft sun deck. The bow has two large sun pads for the sun lover or just a great place to sit and experience the voyage. The aft sun deck has a fiberglass hard top and a 3 sided enclosure. The wing doors can be shut to deflect wind underway. Some of the sun decks features include wet bar with sink and ice maker. There is a factory installed aft bench seat with beautiful teak pedestal table along with a portable Magna BBQ.

Going up 3 steps brings you to the large fly bridge. The forward central helm provides unobstructed 360 degree view. There is a bar to port and a large u-shaped bench seat aft with pedestal table. The bimini and 3 sides of the eisenglass were recently replaced.

A sliding plexi hatch provides access to the enormous Salon. The overhead in the Salon is a light vinyl with recessed lighting. The sole is a sand colored carpet. Forward to port is a bar with Avonite counter top. Storage cabinets below and two pedestal bar stools. Across to starboard is an L-shaped leather settee with adjustable high low table. Moving aft to starboard is a large L-shaped settee with pull out foot rests. Across to port is an appointed custom office space with a fridge just forward of it. Behind the office space is the entertainment center which features a large Samsung flat screen TV, Bose Surround Sound system, stereo, and DVD player. The abundant salon windows have both shades and blinds.

Moving forward and down two steps to port is the u-shaped Galley. Highlights include Avonite countertops, refrigerator, freezer, molded in sink, microwave, stove, oven, trash compactor, numerous teak cabinets, and under sole storage pantry.

From the Galley across to starboard is a smaller, but decent sized Guest Stateroom. There is a single berth, two cabinets, port hole and reading lights.



All the way forward is the VIP Stateroom. This stateroom features a large island queen berth. Some key appointments include built in TV, huge cedar lined hanging locker, numerous teak accent cabinets, deck hatch, and private door to the day head. The day head has a large stall shower and Vacuflush head along with teak cabinets.

All the way aft is the full beam Master Stateroom. This roomy stateroom has a huge island queen berth. A private ensuite head has a separate shower stall with seating area along with vacuflush head system. There are teak cabinets all around and a full complement of AV gear including TV, stereo, and DVD player. A large transom hatch provides a great water view at anchor. The washer and dryer is located in the companionway at the staircase. The back splash of mirrors along the numerous port lights provide plenty of light in the aft cabin.

## Key Features

---

- Twin Diesel Cummins 6CTA8.3M with 1250 Hours
- Bow Thruster
- Garmin 5212 Color Plotter
- 3 Staterooms, 2 Heads / 3rd Stateroom or Huge Storage Area
- Dingy engine services just completed- boat runs fast
- Crash Kit with a good amount of extra filters, hoses, parts, impellers, etc.
- New Bimini top and 3 sided enclosure 2014
- New forward Salon air conditioner 2014
- New bottom paint June 2014
- New anchor
- New water filter
- All batteries replaced 2013
- New tender cover 2015
- Full Engine and Generator Services 6/15
- All A/C's serviced 5/15
- Water maker (Recently Serviced 6/15)

## Galley & Laundry

---

- Splendide washer/ dryer
- Water heater
- Dockside pressure water system
- Central VAC
- Black & Decker coffee maker
- GFI outlet
- Refrigerator & freezer
- Sharp convection microwave oven
- Princess 3 burner stove with oven

- Broan trash compactor
- Molded in sink
- (8) cabinets
- (5) drawers
- Under sole pantry
- Avonite counter tops
- Paper towel rack

## Electronics & Navigation Equipment

---

- Ritchie 6: compass
- Garmin 5212 chart plotter
- Raymarine R-80 radar
- Raymarine autopilot
- Raytheon VHF radio
- Sea King satellite TV receiver
- ICOM M502 VHF
- (2) Flybridge stereo speakers
- Large Samsung flat screen in Salon
- Onkyo stereo tuner
- Onkyo DVD player
- Bose surround sound Salon
- JVC TV Master Stateroom
- Aiwa stereo Master Stateroom
- Quasar TV VIP Stateroom
- New Bluetooth stereo Kenwood marine
- Vizio flat screen TV Aft Deck

## Electrical System

---

- Single 50 amp service
- Onan 17kw generator
- Glendinning cable master
- AC/DC distribution panel
- AC&DC volt & amp gauges
- C charger 5000 battery charger
- Battery isolator
- (4) battery switches
- 80 amp charger
- 3rd 20 amp charger
- (11) group 27 batteries

## Deck Equipment

---

- Coast Guard Approved Safety Package
- Fiberglass decks
- Electric/hydraulic transom lift
- Achilles 10'4" 2005 dinghy w/ Mercury 2 stroke 25 hp
- 200' chain
- Rocna anchor 44 lbs
- Fortress anchor
- 200' rode
- Stainless steel bow rails
- (4) bow fender brackets
- Maxwell windlass
- Forward round Bomar deck hatch
- (2) forward deck sun pads
- Forward windshield sunscreen
- Stainless steel anchor pulpit
- Anchor locker with anchor wash down hose
- Duel trumpet air horns
- Non skid decks
- Flybridge wrap around windshield
- Forward central helm station
- Double bench Stidd helm chair
- New Bimini top with 4 side Eisenglass enclosure
- Fiberglass radar arch
- Stainless steel flybridge hand rails
- U-shaped flybridge aft settee
- Flybridge pedestal table
- (5) flybridge cabinets
- Storage under settee
- Canvas cover for bridge console and helm seat
- Aft sundeck hard top with vent hatch
- Flybridge airconditioning vent
- Aft deck overhead courtesy lights
- Port & starboard aft deck wing doors
- Aft deck wet bar with sink, ice maker, and 2 cabinets
- Aft deck leather bench seat
- Aft deck teak table with duel pedistals
- Aft deck 3 sided enclosure
- Aft deck gate to stern
- Magna BBQ
- Euro staircase to swim platform
- Swim platform
- Swim ladder

- Hydraulic stern davit
- Transom hatch
- (7) dock line storage hooks
- Aft deck storage
- Port & starboard boarding gates
- Tide Ride staircase
- (12) 12' cleats
- Stainless steel transom rail
- Transom shower
- City water inlet
- Transom spigot
- (2) rod holders
- Transom step lights
- Aft Deck TV
- Transom flood lights
- Boarding ladder
- Storage bracket on transom
- (4) port holes Aft Cabin
- (2) midship vent windows
- Stainless steel handrails around Deck House

## Mechanical Equipment

---

- (2) bilge blowers
- (4) bilge pumps
- QL Bow thruster
- Engine alarm
- Fresh water cooling system
- Holding tank & pump out
- Thermal acoustical insulation
- Bennett trim tabs
- Dripless shaft logs
- Horizon water maker 450 gpd
- Racor fuel filters with vacuum gauges
- (5) Marine Air airconditioning units
- 1000 hour engine check performed
- Sea Star hydraulic steering
- Twin disc clutch & throttle controls
- Fire Boy Fire suppression system
- Engine synchronizer
- Full instrumentation
- Oil changing system

---

## Exclusions

---

- Owners personal items.
- Keurig Coffee Maker

---

## Исключения

---

При продаже яхты исключаются личные вещи владельца.

---

## Отказ от ответственности

---

Компания предоставляет описание судна или яхты добросовестно, но не может гарантировать точность этой информации, а также не ручается за техническое состояние. Покупатель должен проинструктировать своих агентов или оценщиков исследовать представленную информацию более подробно, по собственному желанию. Продажа судна или яхты, изменение цены или снятие с продажи будет происходить без предварительного уведомления.

# ФОТОГРАФИИ

Aft Salon



Aft Salon



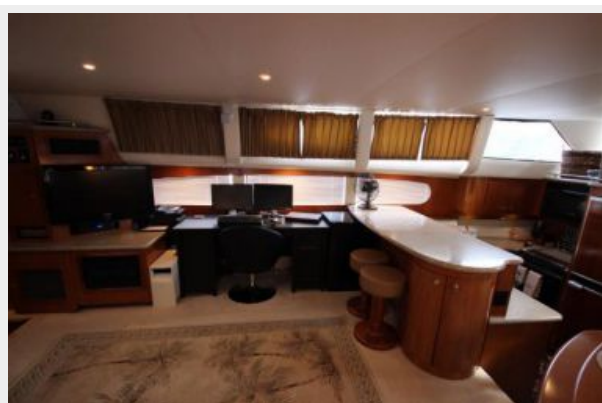
Port Salon



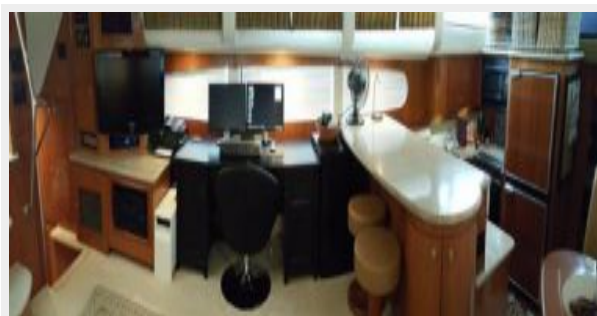
Office



Port Salon



Port Salon



**Port Salon**



**Starboard Salon**



**Starboard Salon**



**Starboard Salon**



**Starboard Salon**



**Starboard Salon**





**Starboard Salon**



**Flatscreen TV**



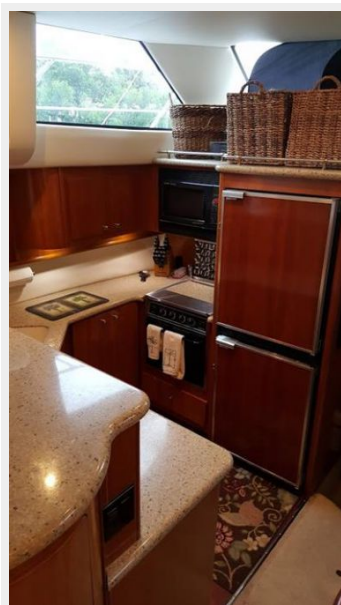
**Main Distribution Panel**



**Genset Controls**



**Galley**



**Galley**





**Galley Storage**



**Galley**



**Stove and Oven**



**Microwave**



**Trash Compactor**



**Washer/Dryer Combo**



**Master Stairs**



**Master Stateroom**



**Master Stateroom**



**Master Stateroom**



**Master Stateroom**



**Master Head**



**Master Vanity**



**Master Head**



**Master Shower**



**Forward Berth**

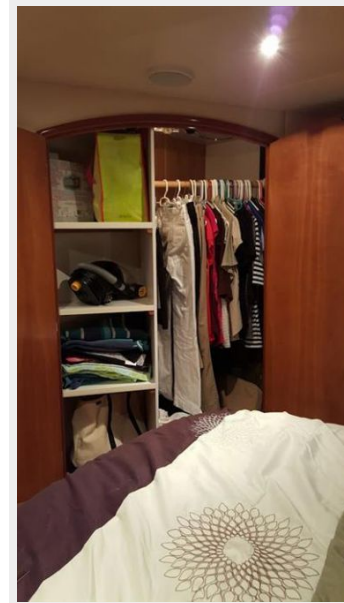




**Forward TV**



**Forward Closet**



**Forward Head Entry**



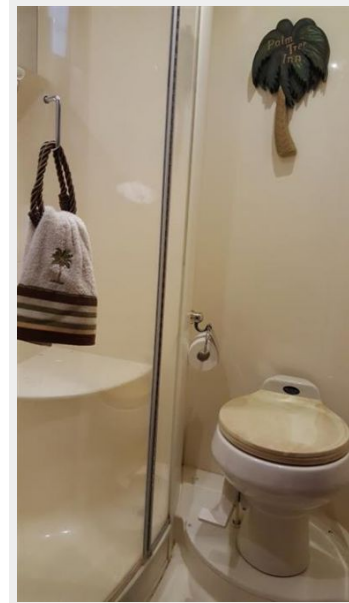
**Forward Head**



**Forward Sink**



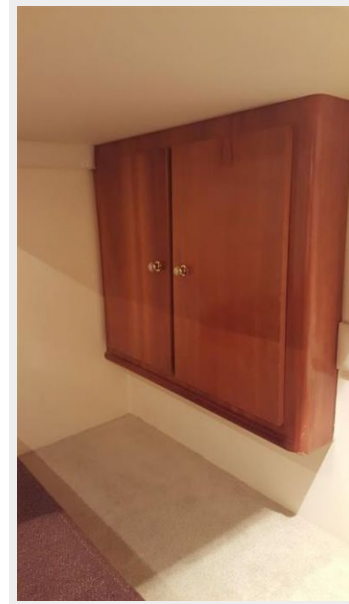
**Master Head**



**Starboard Berth**



**Starboard Berth**



**Main Helm**



**Helm Console**



**Stidd Double Chair**



**Double Stidd Helm Seat**



**Helm Bridge AC**



**Garmin 5212**





### Engine Room Entry



### Engine Room

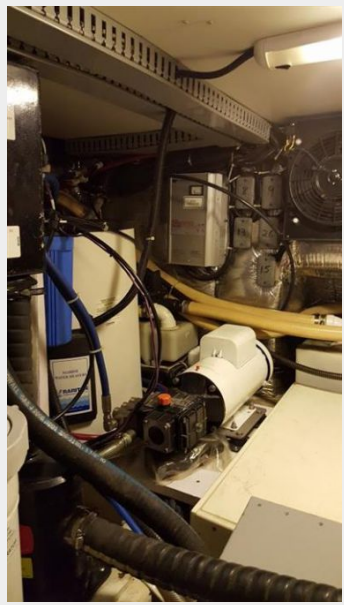


### Engine Room

### Engine Room



**Engine Room**



**Engine Room**



**Engine Room**



**Engine Room**



**Engine Room**



**Engine Room**





**Engine Room**



**Engine Room**



**Engine Room**



**3945 Hours on Genset**



**Aft Cockpit**



**Aft Cockpit**



**Aft Deck**



**Aft Deck**



**Aft Deck**



**Foredeck**



### MarQuipt 45 Degree Included



### MarQuipt Steps Included



### Portside at Dock



### Starboard Side at Dock





### Underwater Lights



### Wide Walkways



### Aft Port Quarter



### Port Profile



### Starboard Profile



### Starboard Bow



**Starboard Profile**



**Stern**



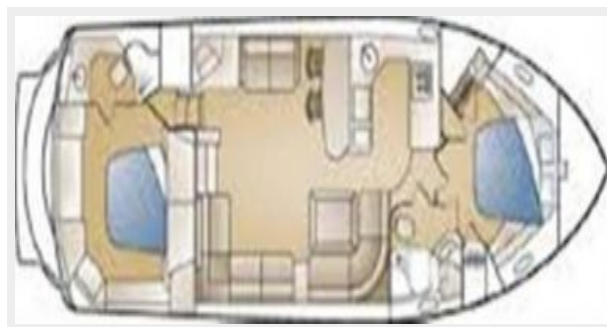
**Transom**



**Achilles Rib Tender w/ 25 Mercury**



**Layout**



# КОНТАКТЫ

---

Андрей Шестаков (Andrey Shestakov) – ведущий яхтенный брокер отдела продаж яхт и судов компании Shestakov Yacht Sales Inc. Официальный представитель Shestakov Yacht Sales Inc. для русскоговорящих клиентов в центральном офисе компании в Майами/Форт Лодердейл/Флорида/США.

## Контактная информация

---

Email: [andrey@shestakovyachtsales.com](mailto:andrey@shestakovyachtsales.com)

Web: [shestakovyachtsales.com](http://shestakovyachtsales.com)

## Телефоны

---

Краснодарский край: **+7(918)465-66-44**

США, Майами, Флорида: **+1(954)274-4435**

## Время работы

---

Понедельник – Суббота: **9:00 - 21:00**  
EDT

Воскресенье: **Закрито**

## Адрес

---



Harbour Towne Marina, 850 NE 3rd St,  
STE 213, Dania, FL 33004