

SILENCIO — PERINI NAVI



Builder: PERINI NAVI

Year Built: 2001

Model: Cruising Ketch

Price: PRICE ON APPLICATION

Location: Spain

LOA: 163' 5" (49.80m)

Beam: 33' 9" (10.27m)

Min Draft: 11' 2" (3.39m)

Max Draft: 27' 7" (8.39m)

Cruise Speed: 13 Kts. (15 MPH)

Max Speed: 15 Kts. (17 MPH)

Our experienced yacht broker, Andrey Shestakov, will help you choose and buy a yacht that best suits your needs **SILENCIO — PERINI NAVI** from our catalogue. Presently, at Shestakov Yacht Sales Inc., we have a wide variety of yachts available on our sale's list. We also work in close contact with all the big yacht manufacturers from all over the world.

If you would like to buy a yacht **SILENCIO — PERINI NAVI** or would like help answering any questions concerning purchasing, selling or chartering a yacht, please call **+1(954)274-4435**

TABLE OF CONTENTS

TABLE OF CONTENTS	2
SPECIFICATIONS	3
Basic Information	3
Dimensions	3
Speed, Capacities and Weight	3
Accommodations	3
Hull and Deck Information	4
Engine Information	4
DETAILED INFORMATION	5
DETAILED SPECIFICATIONS	5
Exclusions	12
Disclaimer	12
PHOTOS	13
CONTACTS	19
Contact details	19
Telephones	19
Office hours	19
Address	19

SPECIFICATIONS

Basic Information

Category: Cruising Ketch

Sub Category: Cruising Sailboat

Model Year: 2001

Year Built: 2001

Refit Year: 2015

Country: Spain

Dimensions

LOA: 163' 5" (49.80m)

Beam: 33' 9" (10.27m)

Min Draft: 11' 2" (3.39m)

Max Draft: 27' 7" (8.39m)

Speed, Capacities and Weight

Cruise Speed: 13 Kts. (15 MPH)

Cruise Speed Range: 3100

Max Speed: 15 Kts. (17 MPH)

Displacement: 1100106.68738 Pounds

Gross Tonnage: 422 Pounds

Water Capacity: 12999.90667892 Gallons

Fuel Capacity: 456999.950432516 Gallons

Accommodations

Total Cabins: 4

Sleeps: 12

Crew Cabin: 4

Crew Sleeps: 9

Hull and Deck Information

Hull Material: Steel

Exterior Designer: Perini Navi Spa, Italy

Interior Designer: Perini Navi (original) /
Christian Liaigre (refit 2012)

Engine Information

Engines: 2

Manufacturer: Deutz

Model: Hp TBD616 V12

Fuel Type: Diesel

DETAILED INFORMATION

DETAILED SPECIFICATIONS

1. MAIN CHARACTERISTICS

TYPE	Sailing Yacht
RIG	Ketch
HULL	2031
BUILDER	Perini Navi Spa
NAVAL ARCHITECT	Ron Holland
EXTERIOR DESIGN	Perini Navi Spa, Italy- original
INTERIOR DESIGN	Perini Navi (original) / Christian Liaigre (refit 2012)
YEAR	2001
REFIT	June 2012 - Full refit and 10 years ABS visit
CLASSIFICATION	ABS + A.S. A1 Yachting Service + AMS; MCA Commercially registered
CLASSIFICATION 2012	Full 10 year MCA ABS revision & Survey completed
CONSTRUCTION	Steel hull, Aluminium 'S' structure
CREW	9
FLAG	Isle of Man
ENGINES	2 x 979 Hp Deutz
GT	422 tons
NT	126 tons
DISPLACEMENT	499 tons full load

2. DIMENSIONS

LOA	49.80m / 164'4"
BEAM	10.27m / 33'8"
DRAFT	8.39m / 27'5" max 3.39m / 11'1" min

3. SPEED & RANGE UNDER POWER

MAXIMUM SPEED	15 knots
CRUISING SPEED	13 knots
FUEL CONSUMPTION	150 litres / hour

RANGE 3,100 nm @ 13 knots

4. CAPACITIES

ACCOMMODATION 8+2 Guests in 4/5 cabins (convertible master)
1 x Master, 1 x Double, 2 x Twin, 2 x Pullman berths

CREW 9 x Crew in 4 cabins

FUEL 45,700 litres / 12,072 US gallons

FRESH WATER 13,000 litres / 3,434 US gallons

BLACK WATER 7,500 litres / 1,981 US gallons

GREY WATER 7,500 litres / 1,981 US gallons

LUBE OIL 1,530 litres / 404 US gallons

5. ACCOMMODATION

OWNER

Double Owner's suite aft with separate bathroom and shower room en suite. There is capability to split the room into two double guest cabins.

GUESTS

One Double guest cabin with shower room en suite

Two Twin guest cabin with shower rooms en suite

CREW

Captain's cabin with shower room en suite & 2 x Upper & lower berthed twin cabins with shower rooms en suite & 1 x Triple berthed with shower room en suite

ENGINES 2 x Deutz 720 kW/979 Hp TBD616 V12 at 2,100rpm,
Diesel

ENGINE HOURS Port: 19,899 hours (September 2016)
Starboard: 19,968 hours (September 2016)

ENGINE EXHAUST Sound Down exhaust silencers

Halyard Silicone Exhaust Hoses

SHAFTS 2 x Kamewa feathering controllable pitch shaft w/
variable pitch propeller

BOWTHRUSTER 1 x Vosper 75kw bow thruster

GENERATORS 3 x 80kW Northern Lights M668A 380V/50Hz 1500rpm
Each in separate sound shields

GENERATORS HOURS Port: 32,081 hours (September 2016) (3,847 hours
since top end rebuild 2015)
Centre: 31,022 hours (September 2016) (2,779 since
top end rebuild 2015)
Stbd: 32,246 hours (September 2016) (3,551 hours

ELECTRICITY	since top end rebuild 2015) 400V 3 phase 50Hz 220V 3 phase 50Hz 110V 3 phase 60Hz 24V DC
SHORE POWER CONVERTER	80 kVA 50kVA Atlas frequency converter 1 x 110V/60Hz Atlas converter for US style outlets throughout
AIR CONDITIONING	Condaria 120,000 BTU air conditioning fan coil units with 2 x 20hp compressors and separate fan coils in each area. 150,000 kcal / hour
WATER MAKER	2 x Idromar reverse, 9600l/day each
SEWAGE SYSTEM	Hamann, IMO approved sewage treatment plant
BILGE WATER SYSTEM	DVZ Oilmaster bilge water treatment separator
TOILETS	Jets vacuum toilets
FUEL CENTRIFUGE	Alfa Laval MAB103 system type MAB103
FUEL FILTERS	Racor

7. SAILS & RIGGING

SAIL WARDROBE	North Sails
SAIL AREA	1,150 m2 approx. excluding MPS
MAIN MAST HEIGHT	49.00m / 160'8" above DWL
MIZZEN MAST HEIGHT	35.05m / 115'
MASTS	Aluminium main and mizzen masts by Perini Navi with continuous stainless steel rod rigging by OYS
BOOMS	Hydraulic furling main and mizzen booms by Marten Spars
WINCHES	12 x Perini Navi custom captive reel winches with load cells for sheet tensions
MAIN SAIL	Fully battened mainsails
MIZZEN	Fully battened mizzen
GENOA	460 sqm
STAYSAIL	116 sqm
MYS	850 sqm

SAILING SYSTEM

Automatically controlled electrically powered sailing systems designed by Perini Navi console at the wheelhouse and duplicated on the flybridge (integrated alarm and monitoring system)

FURLING SYSTEM

Genoa and staysail are furled on electric furlers

*8. NAVIGATION EQUIPMENT***MAGNETIC COMPASS**

C. Plath Navigat VII Mod 10

CHART SYSTEM

Maxsea Electronic Chart System + Transas

RADARS

1 x 96 nm Furuno radars type FR1510 MK111 with 4' antennas interfaced with gyrocompass through AD100 & w/ GPS through an NMEA distribution box

GPS

2 x Furuno GP80 MK111 GPS units

GYROCOMPASS

C Plath Navigat gyrocompass type X MK1-GM with analogue repeaters

AUTOPILOT

C Plath Navipilot V/GM autopilot system

ECHOSOUNDER

Furuno colour video echo sounder type FCV 600L

NAVIAGTION COMPUTER

Transas navigation computer with flat screen and world chart folio, GPS, autopilot, wind instruments etc)

WIND INSTRUMENTS

Brookes & Gatehouse Hercules 890 series 3000 system

9. COMMUNICATION EQUIPMENT

- VHF
- MF HF SSB
- Fleet 55
- NAVTEX
- Sat C
- V-Sat with VoIP (new antenna and network hardware)
- GSM Mobile
- GMDSS A3 sea area compliant
- Furuno weather fax type Fax 208

10. DECK EQUIPMENT

ANCHOR WINDLASSES

2 x Nanni
2 x Stainless Steel Poole type anchors, 570kg each

Anchor lights and day shapes

ANCHOR CHAINS

2 x Alloy Fortress stern anchors & assorted lengths of chain

BOAT CRANE & DAVITS

Tender launching and recovery pole

PASSERELLE

Stainless hydraulic with lights, doorbell and, intercom

SWIMMING PLATFORM

Hydraulically operated swimming platform aft on the port side (also incorporates access into the lazarette)

11. ENTERTAINMENT EQUIPMENT

- Full Kaleidescape/Crestron entertainment system with over 300 movies available
- I-Pod docks in all cabins and guest areas
- 8 x iPads controlling the yachts AV/IT system
- TV and DVD players in all the cabins, Saloon and Cockpit

*12. GALLEY & LAUNDRY EQUIPMENT***GALLEY**

- Berner Induction Stove Top
- Combi Steam oven
- Paco Jet ice cream machine
- Niagara Dishwasher
- MKN Grill
- MKN Oven
- Miele Microwave
- Hoshizaki Ice Machine

LAUNDRY

- 2 x Miele Professional Washing Machines
- 2 x Miele Professional dryers
- Miele Professional roller iron

*13. SECURITY & SAFETY EQUIPMENT***SAFETY**

- All safety equipment as required by ABS class and MCA

MCA COMMUNICATION EQUIPMENT

- 1 x Jotron 30s mk2 406-121,5 MGz Epirb
- 2 x Jotron Tron Sart 9 GHz radar transponders
- 1 x Skanti CU1000 VHF DSC
- 2 x Skanti 9110 portable VHF's
- 1 x Skanti Scansat satcom C with PC 9000 terminal & printer
- 1 x Furuno NX-5 Navtex

FIRE FIGHTING

- CO2 fire protection system
- Fire sprinkler system throughout accommodation areas

14. TENDERS & WATERSPORTS EQUIPMENT

TENDERS

- 2 x William Jet Diesel RIB 5,05m for 7 guests each

WATERSPORTS

- 2 x Inflatable sea kayaks
- 2 x Waterskis and & Wakeboard
- 2 x Seabob F5
- 4 x Radio control laser boats
- 2 x Rigid Paddle Boards
- Extensive Fishing Material
- Snorkelling equipment fo 12 guests
- Buoys
- Kiteboard Training kite

DIVING

- 7 x Sets of dive gear (10 bottles, 5 Stabilizers, 5 regulators)
- 1 x Bauer Capitano C3E dive compressor

15. REFIT NOTES

2012 - 2015 • Full set of working sails were delivered by North Sails Italy in June 2013,

One A4 North Sails Spinnaker new in July 2012, One A2 Doyle Sails Spinnaker

new February 2014

- Masts were pulled October/November 2013. All rod rigging was delivered by

truck to Denmark where a full Xray NDT was performed. 12% was re-headed before being shipped back to Barcelona for installation. While this was being done, both masts were completely repainted Oyster White

- Full top end rebuild on all three generators Auckland 2014/15
- Silencio's interior has been completely refitted in Early 2012
- The sundeck was extended and a large sunpad was added along with a custom fixed bimini
- New interior refit and furniture by Christian Liaigre
- Full 10 years MCA and ABS revision and Survey completed
- Completely new and full installation of entertainment
- New Navigation Software

2. *COMMENTS*

'Silencio' is a beautiful example of Perini-Navi's successful 50 meter series.

Her recent refit, undertaken in the Perini-Navi shipyard in Viareggio, offer the yacht larger outdoor spaces, more al-fresco dining areas, ample sun tanning areas and a light, contemporary interior by the world-renowned designer Christian Liaigre.

'Silencio' is certainly one of the most attractive large sailing yachts on the market today.

3. *EXCLUSIONS*

A complete list of exclusions is available upon request

Exclusions

Owner's personal belongings.

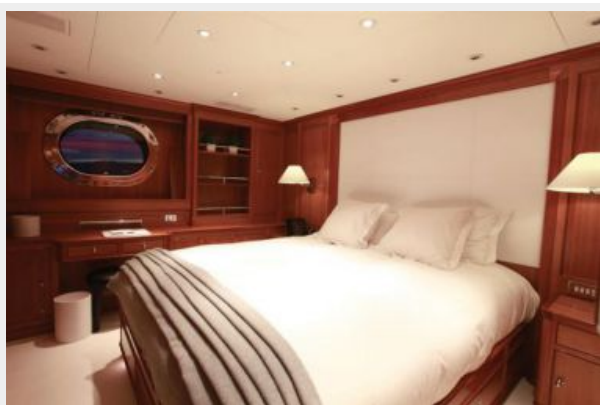
Disclaimer

The Company offers the details of this vessel or yacht in good faith but cannot guarantee or warrant the accuracy of this information nor warrant the condition of the vessel. A buyer should instruct his representatives, agents, or his surveyors, to investigate such details as the buyer desires validated. This vessel or yacht is offered subject to prior sale, price change, or withdrawal without notice.

PHOTOS

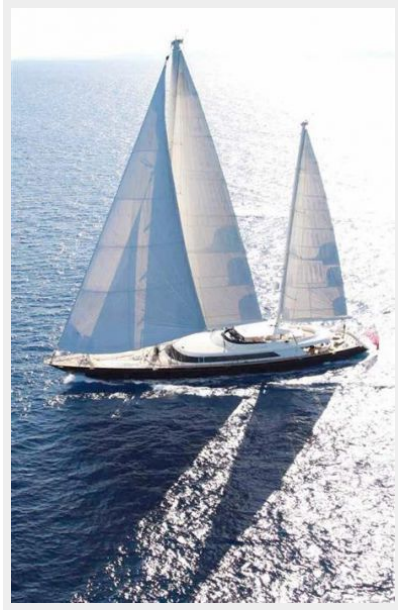












CONTACTS

Andrey Shestakov, leading yacht broker of the sales department of Shestakov Yacht Sales Inc. Shestakov Yacht Sales Inc., the official representative of the Miami/Fort Lauderdale FL headquarters.

Contact details

Email: andrey@shestakovyachtsales.com

Web: shestakovyachtsales.com/en/

Telephones

USA: +1(954)274-4435

Office hours

Monday – Saturday: **9:00 - 21:00** EDT

Sunday: **closed**

Address



Harbour Towne Marina, 850 NE 3rd St,
STE 213, Dania, FL 33004