

PASTORALE — OFFSHORE



Builder: OFFSHORE

LOA: 58' 0" (17.68m)

Year Built: 1997

Model: Motor Yacht

Price: PRICE ON APPLICATION

Location: United States

Our experienced yacht broker, Andrey Shestakov, will help you choose and buy a yacht that best suits your needs **Pastorage — OFFSHORE** from our catalogue. Presently, at Shestakov Yacht Sales Inc., we have a wide variety of yachts available on our sale's list. We also work in close contact with all the big yacht manufacturers from all over the world.

If you would like to buy a yacht **Pastorage — OFFSHORE** or would like help answering any questions concerning purchasing, selling or chartering a yacht, please call **+1(954)274-4435**

TABLE OF CONTENTS

TABLE OF CONTENTS	2
SPECIFICATIONS	3
Overview	3
Basic Information	3
Dimensions	3
Accommodations	3
Hull and Deck Information	3
Engine Information	3
DETAILED INFORMATION	4
Specifications	4
Exclusions	5
Disclaimer	5
PHOTOS	7
CONTACTS	11
Contact details	11
Telephones	11
Office hours	11
Address	11

SPECIFICATIONS

Overview

This superb custom version of the popular OFFSHORE Pilothouse is excellent throughout. She has had professional maintenance since her commissioning in 1997. She is completely equipped and ready to cruise at a moment's notice. Featuring three staterooms, an expansive saloon with dining area, a custom pilothouse arrangement, and numerous custom features throughout, she is a unique vessel with only light use.

Basic Information

Category: Motor Yacht

Model Year: 1997

Year Built: 1997

Country: United States

Dimensions

LOA: 58' 0" (17.68m)

Accommodations

Total Cabins: 3

Hull and Deck Information

Hull Material: Fiberglass

Engine Information

Engines: 2

Manufacturer: MAN

Model: DZ866LE401

Fuel Type: Diesel

DETAILED INFORMATION

Specifications

Accommodations Three staterooms, two heads with separate showers. Pilothouse access to all staterooms. Custom master stateroom with centerline athwartships king berth; ensuite head with custom black marble Corian countertops, Kohler fixtures, Vacuflush head, separate stall shower; custom walk-in closet; custom storage; entertainment center; and drawer storage. Master stateroom features custom burl countertops. Forward to port is a guest stateroom with single over/under full length berths, custom hanging lockers, and a custom washer/dryer installation. Forward is a guest suite with centerline double berth, port and starboard hanging lockers, drawer storage, and ensuite head with separate stall shower, Vacuflush head, white Corian countertop with under counter Kohler sink and fixtures.

Up curving stairs to a uniquely designed pilothouse with centerline helm station with custom burl countertops. Aft to port is an upholstered settee with custom table. Across to starboard is a sliding door and cabinetry with storage, trash compactor, and under counter refrigerator. Directly across to port is a custom galley featuring fore and aft black marble Corian countertops and full size modern appliances. A portside sliding door is outboard between the galley counters. There is a pass through to the saloon with custom closeable stained glass panels.

Down three steps is the expansive saloon and dining area. The dining area features a custom built-in counter height L shape hutch with copious storage. Directly across to starboard is additional storage including an under counter freezer and appliance garage with Tambor doors. Aft is the saloon entertainment center. Countertops are black marble Corian. In the saloon portside is a custom L settee. Aft are two sliding doors leading to the large cockpit.

From the starboard aft pilothouse are curving stairs leading to the full beam fly bridge with centerline helm and two helm chairs, large L shape settee with two hi-lo tables, starboard fresh water sink and dual voltage refrigerator.

Galley Galley is at pilothouse level. New Kitchen Aid (2013) four burner 220v electric glass surface cook top. Jennair 220v electric convection oven. Sub Zero refrigerator, under counter (2). Sub Zero under counter freezer (1). Grand Mariner 110v chest freezer (boat deck). Trash compactor. Panasonic microwave. Kohler porcelain sink with Grohe fixtures. Disposal. Fly bridge dual voltage refrigerator. 110v freezer (saloon). GE washer and dryer(3rd stateroom). Custom black marble Corian countertops.

Electronics & Navigation Sony flat screen monitor (portable to FB) for simultaneous viewing of charts and sonar. Wired for laptop access to Internet via SAT phone (PH, Saloon).

- Furuno radar, 1941, 48 mile
- (2) ICOM IC-M127M VHF's w/ Hailer
- B&G Network quad(PH,FB,MSR,CP)
- Northstar 951XD GPS
- Robertson AP300DLX AP (FB,PH)
- B&G apparent wind (PH)

- Sony 27" TV (Saloon)
- Sony 20" TV (MSR)
- Denon DRA775 Stereo Receiver (Saloon)
- 14 ADS speakers
- Big Bay Chart Plotter
- ACR electric spotlight w/ remote
- ADCOM 6 speaker station control
- 4 BABB stereo speakers

Electrical 12v/24vDC. 110v/220vAC. 12kw Northern Lights generator w/1500 hours. 8kw Northern Lights generator w/ 1300 hours. 12v battery charger. 24v battery charger. 2500w Trace inverter/charger. 130a alternator. Heart Link 2000R battery management system. 4ea. 8D gel cell engine start batteries. 2ea 12v gel cell generator start batteries. 12ea. 6v gel cell house batteries. 50a 110v/240v shore power.

2400-50 Cycle Battery Charge for inverter battery

Deck Equipment Teak cap rail (Cockpit). Teak sole (Cockpit). Cockpit control station. Bimini top, Cockpit half awning. Cockpit winter canvas. Window, hatch, seat, windlass canvas. Mermet windshield cover. Bruce 30kg anchor with 400' chain. 3500# Nilsson electric vertical windlass. S/S flush mount dinghy chocks. 1500# low profile davit. Novurania 400MX RIB with 50hp Yamaha four cycle outboard. Dinghy fathometer. Fenders & lines. Lifejackets.

Mechanical Wesmar 24v Bow thruster. Trolling valves. Dripless shaft seals. Groco oil change system (four engines). 800 GPD FCI water maker with UV sterilizer, S/S filter, fresh water flush. Electric heaters (saloon, master stateroom, guest stateroom, fly bridge). Webasto hot water diesel heating system with Everhot and defrosters. Reverse cycle heat and air conditioning system (four units). Paragon Senior fresh water pump with 5 gal. accumulator tank. Racor fresh water filter. Dual Racor fuel filters per engine. Racor generator fuel filters. Tank Tender fuel/water monitor. Glendinning engine synchronizer. Hynautic engine and steering controls (3 stations). Stabilizer - Trac II Dual Engine Pumps.

Comments One of the most beautiful OFFSHORE Yachts ever built. Featuring a unique pilothouse level galley without sacrificing port and starboard pilothouse doors, this yacht is exquisitely, professionally, and tastefully decorated and lovingly maintained by knowledgeable and caring owners. She features numerous custom cabinetry, fixtures, and layout improvements not seen elsewhere. Only a change in life commitments dictates sale.

Exclusions Personal tools.

Exclusions

Owner's personal belongings.

Disclaimer

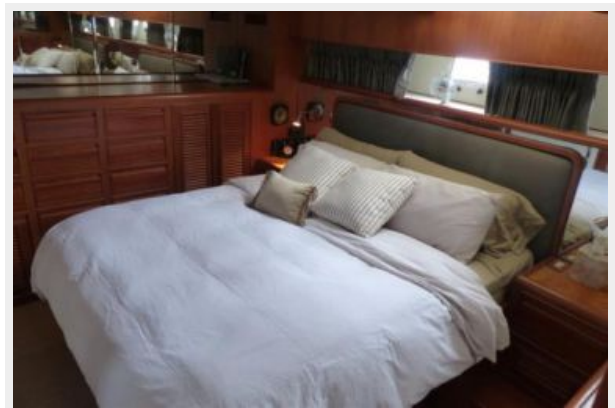
The Company offers the details of this vessel or yacht in good faith but cannot guarantee or

warrant the accuracy of this information nor warrant the condition of the vessel. A buyer should instruct his representatives, agents, or his surveyors, to investigate such details as the buyer desires validated. This vessel or yacht is offered subject to prior sale, price change, or withdrawal without notice.

PHOTOS









CONTACTS

Andrey Shestakov, leading yacht broker of the sales department of Shestakov Yacht Sales Inc. Shestakov Yacht Sales Inc., the official representative of the Miami/Fort Lauderdale FL headquarters.

Contact details

Email: andrey@shestakovyachtsales.com

Web: shestakovyachtsales.com/en/

Telephones

USA: +1(954)274-4435

Office hours

Monday – Saturday: **9:00 - 21:00** EDT

Sunday: **closed**

Address



Harbour Towne Marina, 850 NE 3rd St,
STE 213, Dania, FL 33004