

PASTORALE — OFFSHORE



Судостроитель: OFFSHORE

Длина общая: 58' 0" (17.68m)

Год постройки: 1997

Модель: Моторная яхта

Цена: ЦЕНА ЯХТЫ ПО ЗАПРОСУ

Местонахождение: United States

Купить **Pastorage — OFFSHORE** а также выбрать подходящую вам яхту из нашего каталога яхт вам поможет опытный яхтенный брокер Андрей Шестаков. На сегодняшний день компания **Shestakov Yacht Sales Inc.** имеет большое количество яхт в собственном списке продаж, а также тесно сотрудничает со всеми крупными яхтенными производителями по всему миру.

Для того чтобы купить яхту **Pastorage — OFFSHORE** а также проконсультироваться по любому вопросу связанному с покупкой, продажей, чартером яхт позвоните по телефону **+7(918)465-66-44**.

ОГЛАВЛЕНИЕ

ОГЛАВЛЕНИЕ	2
ХАРАКТЕРИСТИКИ	3
Обзор	3
Основная информация	3
Размеры	3
Размещение	3
Корпус и палуба	3
Информация о двигателе	3
ПОДРОБНОЕ ОПИСАНИЕ	4
Specifications	4
Исключения	5
Отказ от ответственности	5
ФОТОГРАФИИ	7
КОНТАКТЫ	11
Контактная информация	11
Телефоны	11
Время работы	11
Адрес	11

ХАРАКТЕРИСТИКИ

Обзор

This superb custom version of the popular OFFSHORE Pilothouse is excellent throughout. She has had professional maintenance since her commissioning in 1997. She is completely equipped and ready to cruise at a moment's notice. Featuring three staterooms, an expansive saloon with dining area, a custom pilothouse arrangement, and numerous custom features throughout, she is a unique vessel with only light use.

Основная информация

Тип судна: Моторная яхта

Модельный год: 1997

Год постройки: 1997

Страна: United States

Размеры

Длина общая: 58' 0" (17.68m)

Размещение

Всего кают: 3

Корпус и палуба

Материал корпуса: Fiberglass

Информация о двигателе

Двигатели: 2

Производитель: MAN

Модель: DZ866LE401

Тип топлива: Diesel

ПОДРОБНОЕ ОПИСАНИЕ

Specifications

Accommodations Three staterooms, two heads with separate showers. Pilothouse access to all staterooms. Custom master stateroom with centerline athwartships king berth; ensuite head with custom black marble Corian countertops, Kohler fixtures, Vacuflush head, separate stall shower; custom walk-in closet; custom storage; entertainment center; and drawer storage. Master stateroom features custom burl countertops. Forward to port is a guest stateroom with single over/under full length berths, custom hanging lockers, and a custom washer/dryer installation. Forward is a guest suite with centerline double berth, port and starboard hanging lockers, drawer storage, and ensuite head with separate stall shower, Vacuflush head, white Corian countertop with under counter Kohler sink and fixtures.

Up curving stairs to a uniquely designed pilothouse with centerline helm station with custom burl countertops. Aft to port is an upholstered settee with custom table. Across to starboard is a sliding door and cabinetry with storage, trash compactor, and under counter refrigerator. Directly across to port is a custom galley featuring fore and aft black marble Corian countertops and full size modern appliances. A portside sliding door is outboard between the galley counters. There is a pass through to the saloon with custom closeable stained glass panels.

Down three steps is the expansive saloon and dining area. The dining area features a custom built-in counter height L shape hutch with copious storage. Directly across to starboard is additional storage including an under counter freezer and appliance garage with Tambor doors. Aft is the saloon entertainment center. Countertops are black marble Corian. In the saloon portside is a custom L settee. Aft are two sliding doors leading to the large cockpit.

From the starboard aft pilothouse are curving stairs leading to the full beam fly bridge with centerline helm and two helm chairs, large L shape settee with two hi-lo tables, starboard fresh water sink and dual voltage refrigerator.

Galley Galley is at pilothouse level. New Kitchen Aid (2013) four burner 220v electric glass surface cook top. Jennair 220v electric convection oven. Sub Zero refrigerator, under counter (2). Sub Zero under counter freezer (1). Grand Mariner 110v chest freezer (boat deck). Trash compactor. Panasonic microwave. Kohler porcelain sink with Grohe fixtures. Disposal. Fly bridge dual voltage refrigerator. 110v freezer (saloon). GE washer and dryer(3rd stateroom). Custom black marble Corian countertops.

Electronics & Navigation Sony flat screen monitor (portable to FB) for simultaneous viewing of charts and sonar. Wired for laptop access to Internet via SAT phone (PH, Saloon).

- Furuno radar, 1941, 48 mile
- (2) ICOM IC-M127M VHF's w/ Hailer
- B&G Network quad(PH,FB,MSR,CP)
- Northstar 951XD GPS
- Robertson AP300DLX AP (FB,PH)
- B&G apparent wind (PH)

- Sony 27" TV (Saloon)
- Sony 20" TV (MSR)
- Denon DRA775 Stereo Receiver (Saloon)
- 14 ADS speakers
- Big Bay Chart Plotter
- ACR electric spotlight w/ remote
- ADCOM 6 speaker station control
- 4 BABB stereo speakers

Electrical 12v/24vDC. 110v/220vAC. 12kw Northern Lights generator w/1500 hours. 8kw Northern Lights generator w/ 1300 hours. 12v battery charger. 24v battery charger. 2500w Trace inverter/charger. 130a alternator. Heart Link 2000R battery management system. 4ea. 8D gel cell engine start batteries. 2ea 12v gel cell generator start batteries. 12ea. 6v gel cell house batteries. 50a 110v/240v shore power.

2400-50 Cycle Battery Charge for inverter battery

Deck Equipment Teak cap rail (Cockpit). Teak sole (Cockpit). Cockpit control station. Bimini top, Cockpit half awning. Cockpit winter canvas. Window, hatch, seat, windlass canvas. Mermet windshield cover. Bruce 30kg anchor with 400' chain. 3500# Nilsson electric vertical windlass. S/S flush mount dinghy chocks. 1500# low profile davit. Novurania 400MX RIB with 50hp Yamaha four cycle outboard. Dinghy fathometer. Fenders & lines. Lifejackets.

Mechanical Wesmar 24v Bow thruster. Trolling valves. Dripless shaft seals. Groco oil change system (four engines). 800 GPD FCI water maker with UV sterilizer, S/S filter, fresh water flush. Electric heaters (saloon, master stateroom, guest stateroom, fly bridge). Webasto hot water diesel heating system with Everhot and defrosters. Reverse cycle heat and air conditioning system (four units). Paragon Senior fresh water pump with 5 gal. accumulator tank. Racor fresh water filter. Dual Racor fuel filters per engine. Racor generator fuel filters. Tank Tender fuel/water monitor. Glendinning engine synchronizer. Hynautic engine and steering controls (3 stations). Stabilizer - Trac II Dual Engine Pumps.

Comments One of the most beautiful OFFSHORE Yachts ever built. Featuring a unique pilothouse level galley without sacrificing port and starboard pilothouse doors, this yacht is exquisitely, professionally, and tastefully decorated and lovingly maintained by knowledgeable and caring owners. She features numerous custom cabinetry, fixtures, and layout improvements not seen elsewhere. Only a change in life commitments dictates sale.

Exclusions Personal tools.

Исключения

При продаже яхты исключаются личные вещи владельца.

Отказ от ответственности

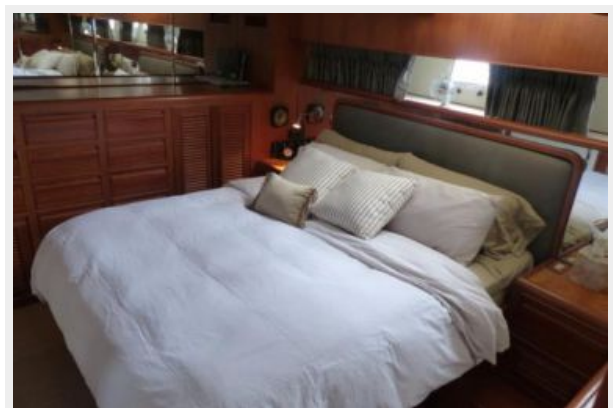
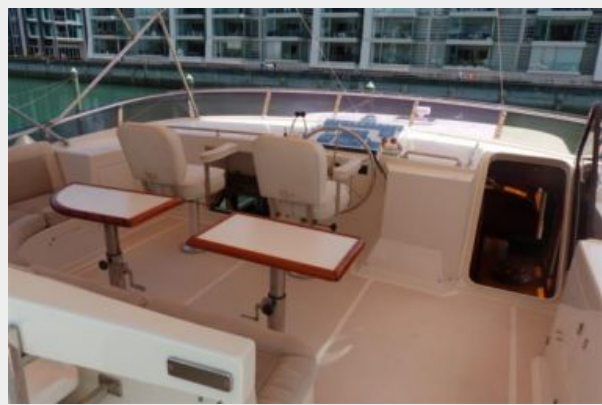
Компания предоставляет описание судна или яхты добросовестно, но не может

гарантировать точность этой информации, а также не ручается за техническое состояние. Покупатель должен проинструктировать своих агентов или оценщиков исследовать представленную информацию более подробно, по собственному желанию. Продажа судна или яхты, изменение цены или снятие с продажи будет происходить без предварительного уведомления.

ФОТОГРАФИИ









КОНТАКТЫ

Андрей Шестаков (Andrey Shestakov) – ведущий яхтенный брокер отдела продаж яхт и судов компании Shestakov Yacht Sales Inc. Официальный представитель Shestakov Yacht Sales Inc. для русскоговорящих клиентов в центральном офисе компании в Майами/Форт Лодердейл/Флорида/США.

Контактная информация

Email: andrey@shestakovyachtsales.com

Web: shestakovyachtsales.com

Телефоны

Краснодарский край: **+7(918)465-66-44**

США, Майами, Флорида: **+1(954)274-4435**

Время работы

Понедельник – Суббота: **9:00 - 21:00**
EDT

Воскресенье: **Закрито**

Адрес



Harbour Towne Marina, 850 NE 3rd St,
STE 213, Dania, FL 33004