

THEMIS — TRINITY



Судостроитель: TRINITY

Год постройки: 1998

Модель: Моторная яхта

Цена: **ЦЕНА ЯХТЫ ПО ЗАПРОСУ**

Местонахождение: United States

Длина общая: 156' 0" (47.55m)

Ширина: 28' 0" (8.53m)

Мин. осадка: 7' 0" (2.13m)

Макс. осадка: 7' 6" (2.29m)

Крейс. скорость: 18 Kts. (21 MPH)

Макс. скорость: 21 Kts. (24 MPH)

Купить **THEMIS — TRINITY** а также выбрать подходящую вам яхту из нашего каталога яхт вам поможет опытный яхтенный брокер Андрей Шестаков. На сегодняшний день компания **Shestakov Yacht Sales Inc.** имеет большое количество яхт в собственном списке продаж, а также тесно сотрудничает со всеми крупными яхтенными производителями по всему миру.

Для того чтобы купить яхту **THEMIS — TRINITY** а также проконсультироваться по любому вопросу связанному с покупкой, продажей, чартером яхт позвоните по телефону **+7(918)465-66-44**.

ОГЛАВЛЕНИЕ

ОГЛАВЛЕНИЕ	2
ХАРАКТЕРИСТИКИ	5
Обзор	5
Основная информация	5
Размеры	5
Скорость, вместимость и масса	6
Размещение	6
Корпус и палуба	6
Информация о двигателе	6
ПОДРОБНОЕ ОПИСАНИЕ	7
Accommodations	7
Interior Upgrades - New 2015/16	7
Main Salon	7
Dining Salon	8
Galley	8
Master Stateroom, On-Deck Forward	9
(2) VIP King Staterooms, Aft Port & Starboard	9
(2) Twin Guest Staterooms, Forward Stbd	10
Crew Quarters, Below Forward	10
Skylounge	11
Pilothouse Equipment & Captain's Cabin	11
Electronics & Navigational Equipment	12
Upper Aft Deck	12
Flybridge Equipment & Tenders	13
Flybridge Electronics	13
Aft Deck Equipment	13
Cockpit / Beach Club	14
Deck Equipment	14

Fire Fighting Equipment	15
Electrical Equipment & Control Room	15
Engine/Mechanical Equipment & 2015 Upgrades	15
Comments	16
Исключения	17
Отказ от ответственности	17
ФОТОГРАФИИ	18
Main Salon	18
Main Salon	18
Main Salon	18
Dining Salon	18
Dining Salon	18
Galley	18
Formal Entry, Main Deck	19
Master Stateroom	19
Master Stateroom, On-Deck	19
Master Stateroom	19
Master Stateroom Entry	19
His & Her Master Bath	19
His & Her Master Bath	20
King Guest Stateroom	20
King Guest Stateroom, Port	20
King Guest Head	20
King Guest Stateroom, Starboard	20
King Guest Stateroom	20
King Guest Bath	21
Twin Guest Stateroom, Port	21
Twin Guest Stateroom, Starboard	21
Skylounge, Upper Deck	21

Skyounge	21
Skyounge	21
Pilothouse	22
Pilothouse Helm	22
Captain's Cabin	22
Upper Aft Deck	22
Flybridge	22
Flybridge Jacuzzi	22
Flybridge Seating	23
Flybridge Seating	23
Flybridge Bar	23
Aft Deck	23
Aft Deck	23
Cockpit/Beachclub	23
Cockpit/Beachclub	24
Cockpit/Beachclub Watertoys	24
Crew Lounge	24
Control Room	24
Engine Room	24
Overhead profile	24
Layout	25
КОНТАКТЫ	26
Контактная информация	26
Телефоны	26
Время работы	26
Адрес	26

ХАРАКТЕРИСТИКИ

Обзор

Multi-million dollar refit in summer of 2015 to include; a complete new custom Scott Carpenter interior throughout the vessel with all new furnishings, upholstery, new carpet & new headliner, bedding, soft goods, marble showers & vanities, LED lighting, artwork, along with all hardware, fixtures, replaced with polished nickel. Also includes new Naiad 520 'at rest' stabilizers, new electronics, KVH Sat system, new HD TV receivers, new hot tub on flybridge, new tender & waverunners, new A/C compressor, new air handlers, complete service of main engines & generators, new bottom job (9/16), plus much more!

Основная информация

Тип судна: Моторная яхта	Подкатегория: Tri-Deck
Модельный год: 1999	Год постройки: 1998
Год обновления: 2015	Вид обновления: Complete interior refit & systems upgraded
Страна: United States	Верх: Open
Открытая палуба мостика: Да	Кубрик: Да

Размеры

Длина общая: 156' 0" (47.55m)	Длина по ватерлинии: 156' 0" (47.55m)
Ширина: 28' 0" (8.53m)	Мин. осадка: 7' 0" (2.13m)
Макс. осадка: 7' 6" (2.29m)	

Скорость, вместимость и масса

Крейс. скорость: 18 Kts. (21 MPH)

Макс. скорость: 21 Kts. (24 MPH)

Водоизмещение: 473994 Pounds

Чистый вес: 421 Pounds

Вместимость воды: 4200 Gallons

Вместимость сточного бака: 806 Gallons

Объем топливного бака: 16676 Gallons

Размещение

Всего кают: 5

Спальные места: 10

Каюта капитана: Да

Каюты экипажа: 5

Койки экипажа: 9

Корпус и палуба

Материал корпуса: Aluminum

Комплектация корпуса: Semi-Displacement

Дизайнер корпуса: Trinity

Дизайнер экстерьера: Paragon Design

Дизайнер интерьера: Scott Carpenter,
Charlotte NC

Информация о двигателе

Двигатели: 2

Производитель: Caterpillar

Модель: 3512B

Тип топлива: Diesel

ПОДРОБНОЕ ОПИСАНИЕ

Accommodations

The entire interior was refit in summer of 2015 by Scott Carpenter Interiors to include all new furnishings, carpeting, headliner, new sinks, marble vanities and marble showers, new LED lighting, wallcoverings, soft goods, art work along with all hardware replaced with nickel plated fixtures. The vessel features rich joinery throughout with a mixture of African Pearwood and Sapele with burle inlays. In 2016, several new galley appliances were updated and installed. The owner's stateroom is located on the main deck forward and is full beam with walk-in closets forward of the King berth. There is a settee to port and two fully independent His and Her baths with shower and Jacuzzi tub located aft. The guest accommodations consists of two King VIP staterooms and two twin staterooms, each with their own private bath. The crew quarters accommodates up to nine in five upper/lower cabins forward, engineers cabin aft of engine room and the captain's quarters located off the pilothouse.

Interior Upgrades - New 2015/16

- All new furnishings throughout
- All new carpeting throughout
- All new headliner throughout
- Replaced all hardware, sinks & fixtures to polished nickel
- New pilothouse helm console
- New LED lighting throughout
- New nickel plated sinks and faucets in bar areas
- Replaced all tubs in guest baths with marble showers, seamless glass doors
- Added marble top to vanities in guest baths
- New mirrors in guest baths
- New lamps and sconces installed
- New mattresses', headboards, bedding, linens, soft goods
- New fixed lamps & sconces throughout
- (2) Kitchen Aid 30" ovens installed (2016)
- New Fisher & Paykel dishwasher (2016)

Main Salon

- Custom African Pearwood & Sapele joinery w/burle inlays throughout
- Custom overhead paneling throughout w/new LED lighting (2015)
- Custom carpeting throughout w/runners (2015)
- Wood w/mirror/glass top cocktail table (2015)
- (2) Century sofas w/navy & white upholstery (2015)

- (2) Oversized glass top end tables w/stainless steel base (2015)
- (3) Century wood frame, upholstered chairs, navy/white (2015)
- Walk-up bar aft w/new Creme de Marfil marble top (2015), Sub-Zero refrigerator, Kitchen Aid icemaker, new nickel plated sink & faucet & (4) Custom upholstered bar stools (2015)
- Built-in cabinets behind bar w/lofted storage for stemware
- Built-in entertainment center forward housing Samsung 40" HD TV, Sony Blue Ray DVD, Direct TV receiver, Marantz receiver & Creston controller
- Large radius windows w/Hunter Douglas blinds & Roman cornices, port & stbd
- Floor to ceiling radius windows aft, port & stbd
- (4) Stainless steel table lamps (2015)
- Recessed sliding privacy doors w/glass panel, forward port & stbd
- New artwork throughout

Dining Salon

- Custom high gloss, flamed burle dining table w/compass rose inlay, seating for (10)
- (10) New navy upholstered dining chairs w/compass rose inlay, (2) w/arms
- Mirrored panels on aft bulkhead
- Custom raised oval tray ceiling w/LED lighting
- Custom built-in buffets w/Breccia marble top, lofted storage for china, silverware, port & stbd
- (2) U-line wine coolers, port & stbd
- Recessed sliding doors w/glass panel to main foyer, port & stbd **Formal Entry / Main Foyer:**
- Oversized, full width formal entry w/Breccia marble flooring, custom inlay
- Watertight entry doors, port & stbd **Day Head:**
- Custom Breccia marble vanity top
- New nickel plated sink & polished nickel fixtures (2015)
- Custom Breccia marble flooring
- Mirrored panels on bulkhead & overhead

Galley

- Commercial style galley w/stainless steel appliances
- (2) Delfield stainless steel refrigerators/freezers
- Viking 6-burner glass cooktop
- (2) KitchenAid 30" built-in oven (new 2016)
- Wolf electric grill
- Eagle 2-basket deep fryer
- Fisher & Paykel double drawer dishwasher (new 2016)
- Miele G870 dishwasher
- Whirlpool microwave

- Sub-Zero icemaker
- Samsung drink fridge
- (2) GE trash compactors
- (2) Stainless steel double sinks (2015)
- (2) Large pantry's
- Stainless steel range vent fan
- Granite countertops, stainless steel bulkhead panels & back-splashes
- Large oval window w/Hunter Douglas blinds
- Custom overhead w/hard panels
- Access down to crew quarters

Master Stateroom, On-Deck Forward

- King-size berth w/drawer storage below, new upholstered headboard
- New mattress, custom spread, shams, pillows & bedding (2015)
- (2) Built-in nightstands w/marble top & new table lamps
- Built-in 3-drawer dresser w/marble top
- Built-in vanity w/marble top, drawers & upholstered vanity bench, port
- Upholstered settee (2015) w/built-in end tables at each end, stbd
- Entertainment center w/back-lit cabinets, bookshelves, Samsung HD TV, Sony DVD, Sony stereo, Direct TV, Marantz receiver & Yamaha amplifier
- Built-in desk w/custom Braccia marble top, drawers, table lamp & chair at entry of stateroom
- His & Her walk-in, cedar lined closets w/dressing mirror on each door, port & stbd
- (4) Large windows w/Hunter Douglas pleated blinds
- Sub-Zero refrigerator in built-in cabinet
- Gardall safe in aft cabinet **His & Her Master Bath: Aft**
- Her bath w/custom Breccia marble vanity w/inlay fossils, mirrored medicine cabinets, new nickel plated sink, large jacuzzi tub, new nickel plated fixtures, bidet, large mirror, (2) new wall sconces, Breccia marble flooring & bulkheads
- His bath w/Breccia marble vanity w/inlay fossils, mirrored medicine cabinet, new nickel plated sink & fixtures, marble shower w/frameless glass enclosure, (2) new wall scones & Breccia marble flooring

(2) VIP King Staterooms, Aft Port & Starboard

- (2) VIP staterooms located below deck, aft port & stbd, each with;
- King-size berths w/drawer storage below & new upholstered headboards (2015)
- New custom spread, shams & bedding (2015)
- (2) Built-in nightstands w/marble top & new table lamps
- Built-in vanity w/marble top & upholstered bench seat
- Sliding shoji screen panels on outward bulkhead
- Entertainment center w/Sony Bravia HD TV, DVD & stereo receiver

- Double door hanging lockers w/dressing mirror
- New nickel plated hardware & fixtures (2015)
- New artwork (2015)
- Private bath w/new marble shower w/frameless glass door, marble flooring, new marble vanity top w/new dual sinks, new mirrored panels, new fixtures, new wallcovering, new Shoji screen (2015)

(2) Twin Guest Staterooms, Forward Stbd

- Twin berths w/drawers below, new custom upholstered headboards
- New custom spread, shams, bedding (2015)
- Mirrored bulkhead behind berths
- Built-in, 2-drawer nightstand w/new lamp
- Built-in, 3-drawer dresser
- Built-in vanity/writing desk w/upholstered chair
- Custom sliding Shoji screen panels
- Entertainment center w/Samsung HD TV, DVD, stereo
- Hanging lockers
- Private bath w/new marble shower w/seamless glass door, marble flooring, new marble vanity top w/new dual sinks, new sconces, new mirrored panels, new fixtures, new wallcovering, new Shoji screen (2015) **Lower Deck Foyer:**
- Large foyer for guest staterooms w/custom marble flooring
- Frigidaire stackable washer/dryer concealed in closet
- Scottsman mini fridge concealed in cabinet
- Custom mahogany molding & chair rail
- New overhead panels (2015)

Crew Quarters, Below Forward

- New flooring (2015)
- Oversized crew lounge w/bench seating newly upholstered (2015) & large corian table
- Corian countertop & new sink & faucet (2015)
- Frigidaire full size refrigerator/freezer (2015)
- Microwave/convection oven
- Samsung HD TV
- VHF radio
- Engine room alarm panel
- Freeman port lights w/storm covers
- (3) Crew cabins w/over & under berths
- (4) New Zeno mattresses (2015)
- Separate laundry room w/ (2) sets of Maytag washers & dryers, sink & work station
- Ample storage space built-in below deck

- Security camera monitor

Skylounge

- Century L-shaped upholstered sofa (2015)
- Contemporary tri-level wood cocktail table (2015)
- (2) Century swivel chairs (2015)
- (2) Century occasional chairs w/ottomans (2015)
- Large wood lacquered end table (2015)
- New table lamps (2015)
- Walk-up bar w/African Sapele joinery, cove moldings, brass foot rest, granite countertop, U-line wine cooler, Sub-Zero refrigerator, Kitchen Aid icemaker, new sink (2015) & fixtures, trash compactor, custom pull out drawers w/lofted storage for glassware
- (4) High back newly upholstered bar stools w/pedestal base & foot rest
- Built-in entertainment center forward w/Sony Bravio 40" HD TV, Direct HDTV receiver, Sony DVD/VD, Marantz surround sound receiver & Yamaha amplifier
- Large windows w/Hunter Douglas pleated blinds & Roman cornices, port & stbd
- New custom headliner throughout (2015)
- Double glass doors to upper aft deck **Upper Day Head:**
- Teak flooring
- Granite vanity top
- New nickel plated sink & fixtures (2015)
- Beveled mirrored bulkheads & wood wainscot
- Overhead mirror

Pilothouse Equipment & Captain's Cabin

- New upholstered helm station console & black laminate (2015)
- (2) Leather helm chairs, port & stbd (new leather 2015)
- Built-in newly upholstered settee (2015) w/chart storage drawers below & foot rest
- Large windows w/sunscreens
- Built-in cabinetry, lockers & storage behind settee
- (2) Pantograph entry doors, port & stbd, to walk-around decks
- New carpeting (2015)
- Wing stations, port & stbd, w/rebuilt steering, joysticks & rudder indicator **Captain's Cabin:**
- Access to private captain's quarters, port
- Queen berth w/spread & bedding (2015)
- Built-in writing desk, drawer storage & hanging locker
- Private bath w/vanity, mirror & stall shower (2015)

Electronics & Navigational Equipment

- New Furuno digital TZTBB black box 96-mile Radar 25kw w/ 6" open array antenna (2015)
- New Furuno MU19T multipurpose 19" LCD touch screen for integration of radar & charting (2015)
- (2) New Furuno GP-33 GPS & antennas (2015)
- Furuno AIS FA-100
- Furuno Navnet radar/chart plotter/fishfinder
- B&G hydra 20/20 CD display w/NMEA to Nav computer & TZ touch
- New Sailor 6222 VHF DSC class A w/remote ram mic at helm (2015)
- Interface Furuno TZ touch to dedicated monitor in captain's cabin w/remote control
- C Plath Navipilot & MK 10 Gyro (serviced 2015)
- New Naiad 7400d0188 touch screen control head for "at rest" stabilizers (2015)
- ABS bow thruster control
- Nauticomp Titian 19" commercial display (2015)
- (2) Nauticomp Titian 15" commercial displays (2015)
- NEMA 2000 backbone for integration of all NMEA compatible devices (2015)
- KVH HD 7 Satellite TV system w/ Tri Americas LNB (2015)
- New rack mounted equipment installed in pilothouse w/ UPS & cooling fans (2015)
- (16) HD TV receivers w/ HDMI cabling for HD TV thru out & new SWM coaxial splitter (2015)
- New KVH V7IP VSAT antenna for 24/7 primary communications (2015)
- New Nav computer w/Nobletec Trident on UPS (2015)
- NCR 330 Nautel receiver
- Pelco exterior PTZ camera system w/new HDMI high resolution 6GB hard drive, provide dedicated screens in pilothouse & crew mess w/independent controls (2015)
- New internal internet w/ 10 wireless access points, new router, integrated to new VSAT (2015)
- Re-configure vessels PBX w/new VSAT and cell phones (2015)
- KVH Tracphone F55 Sat Com system
- Furuno S1562 SSB
- Furuno DAC60 watch receiver
- Furuno 8500 VHF & S Phone
- Cat Vision engine monitor
- ACR dual searchlight control

Upper Aft Deck

- Full wrap-around bench seating w/new cushions & covers (2015)
- (2) Oval hi-lo teak tables w/stainless steel base, port & stbd
- New Murray Brothers teak dining chairs w/cushions (2015)
- New Murray Brothers comfort chairs w/cushions & ottomans (2015)
- New overhead hard panels w/ new LED lights

- Glass window panels wind deflectors, port & stbd
- Stairways w/teak steps up to flybridge & to lower aft deck
- Teak deck

Flybridge Equipment & Tenders

- Flybridge modified to include new hot tub Jacuzzi centerline w/teak trim & steps (2015)
- New high gloss teak bar top & Murray Brother bar stools (2015)
- Double bench helm seats, port & stbd (new upholstered cushions 2015)
- Built-in U-shaped settee w/large fixed corian table, stbd
- (2) Built-in sun chaise lounge chairs w/new cushions
- Wet bar w/new sink & new icemaker (2015) & storage below
- New plexiglass windscreen (2015)
- New high gloss teak bar top, new sink & faucet (2015)
- (2) Tucci 9' x 9' umbrellas w/stainless steel mounting brackets
- Outdoor stereo speakers
- Sliding hatch centerline w/stairwell to pilothouse
- New coat of non-skid applied to decks
- (2) Viking 20-man life rafts in white powder coated cradles w/new hydrostatic releases (2015)
- Large door hatch built into deck w/stairs down to aft deck
- New stainless steel railings around opening (2015) **Boat Deck & Tenders:**
- Boat deck reconfigured to accept tenders
- (2) 2015 Yamaha VX cruiser waverunners
- 2012 Novurania 18' RIB w/ Yamaha 115HP, 4-stroke O/B
- Quantum QR 9000lb crane
- New stainless steel removable chocks (2015)

Flybridge Electronics

- Main engine repeaters
- Navnet repeater
- Green Marine screen monitor
- Icom 506 VHF radio
- Bow thruster control
- Mather single lever control
- Rudder angle indicator
- Dual ACR 100 searchlights

Aft Deck Equipment

- Built-in U-shaped bench seating w/new cushions & covers (2015)
- Custom oversized Murray Brothers teak table w/double stainless base (2015)
- (6) Murray Brothers teak chairs w/cushions & end table (2015)
- Aft boarding gates, port & stbd
- Teak decks
- New exterior LED lighting (2015)
- Stairwell up to flybridge w/teak steps
- Access door to stairway down to engine room
- (2) Maxwell 3500 capstans, stern
- Overhead hard panels refastened w/new clips
- New stainless steel latches on all lockers
- Teak steps down to cockpit w/stainless steel hand rails

Cockpit / Beach Club

- Bar w/new sink, refrigerator & new icemaker (2015)
- New Murray Brothers high gloss teak bar stools & deck chairs w/cushions (2015)
- New Tucci 9 x 9 umbrella (2015)
- Teak decks
- Teak grate, rebuilt 2015
- New 20mm teak on extended swim platform
- New stainless steel latches on locker doors
- New boarding ladders, port & stbd
- New LED exterior lighting (2015)
- Transom door
- Watertight door accessing control station, engineers cabin & engine room

Deck Equipment

- New non-skin refinished on foredeck (2015)
- Anchor shackles replaced & anchor repainted (2015)
- All teak decks refinished (2015)
- Forward Portuguese roof log refinished w/new non-skid (2015)
- Dual Maxwell VW8000 anchor windlass w/stainless steel recessed anchor pockets
- Windlass to stbd rebuilt w/new coil, brake & variable frequency drive (2015)
- (2) Newwave sea stairs w/handrails
- (2) 450' 3/4" chain anchor rodes
- (2) New Wave sea stairs w/handrails (2015)
- European walk-around decks
- Clear lucite wing doors to walk-around decks
- Portuguese bridge w/teak decks
- European style centerline passage way to foredeck

- Replaced all port light gaskets (2015)
- New LED lighting, new labels & valve markings (2015)
- Complete bottom job (9/16)

Fire Fighting Equipment

- Maritron fire monitoring system w/smoke & thermal sensors throughout
- Monitoring stations in pilothouse, crew & control room
- Kidde CO2 pneumatically controlled
- Dual jet discharge nozzles w/heat activated pneumatic sensors
- (2) 208v fire pumps w/dual 75' hose reels
- Portable fire extinguishers located throughout
- (2) Sets of fire fighting equipment w/breathing apparatus
- Galley hood fire suppression system (2015)

Electrical Equipment & Control Room

- Twin Caterpillar 99 KW generators - Port: 11,777 hrs / Stbd: 12,050 hrs (complete service 2015)
- 100-amp 3-phase
- 208/408v 3-phase
- (2) Atlas shore power converters (serviced w/new fans & capacitors, 2015)
- (2) 24v batteries for main engines
- (2) KW batteries for gens (2015)
- (2) Victron 24v 60 amp battery chargers (2015) **Control Room:**
- Fully air conditioned
- Work bench w/vice
- Control station
- Engineers cabin w/twin berth, head & stall shower

Engine/Mechanical Equipment & 2015 Upgrades

- Twin Caterpillar 3512B, 2250 HP each
- Cat Vision engine monitor
- Aqua Air A/C system, 30-tons w/new Alpha chiller compressor (2015)
- (2) Filtration Concepts 2500 GPD watermakers (3 new membranes, 2015)
- New Naiad 520 "At Speed" and "At Rest" stabilizer system (2015)
- American 24" 60HP duo-prop electric bow thruster
- Kobelt hydraulic steering system w/dual manual backup
- Alfa Laval 103 centrifuge fuel separator/filtration|
- Hamann waste treatment system

- Black water system (rebuilt pump head assembly, stator & mechanical seals, 2015)
- New sensors and float switches (2015)
- Black and gray water tanks (clean/pressure wash (9) tanks, 2015)
- Heli-Sep oil/water separator
- Maritron fire monitoring system
- Engine room blowers
- Air conditioned engine room
- Brownies high pressure dive compressor
- Work bench & tool chest
- Complete cosmetic refit to engine room & engineers control room to include; new hard overhead panels, repainted entire engine room, bilges & powder coat deck plates (2015)

Mechanical Upgrades 2015:

- Complete service on main engines at Port: 4126 Hrs / Stbd: 4158 Hrs (as of 10/16) to include; Remove after coolers, heat exchangers, ultrasonically clean and pressure test Replace port and starboard after cooler cores Remove turbocharger compressor housings clean and inspect Adjust intake/exhaust valves and injectors heights both main engines Replace all associated gaskets, seals, O rings, etc. Repair all survey deficiencies noted on sea trials Change oil and filters, clean Air Seps
- Complete service of both Caterpillar generators: Remove and rebuild both injection pumps, re calibrate to new Caterpillar factory settings .61mm Reinstall pumps calibrate injection timing to 4 degrees BTDC Remove injectors, install new injectors with .050 washers per CAT recommendations Replace all associated seals, gaskets and O rings, etc. Change oil and filters, clean Air Seps Replace (2) motor mounts
- Air Conditioning System: Replace starboard AC compressor and variable frequency drive Remove (7) air handlers, bench test, rebuild and reinstall Disconnect and clean (26) air handlers, replace all filters, clean drain pans, replace valves Replace approx. 500' of flexible ducting with new ducting Chemically clean all remaining ducting, treat with Advanced Photohydroionization® & MES Clean® Replace all plenum and replace all duct work in AC void above pilothouse
- Stabilizer System: Install new Naiad 520 "At Speed" and "At Rest" stabilizer system (2) New 2.94 m2 fins Modify/reinforce stabilizer foundations per ABS recommendations Color touch screen control display (pilothouse) Electric 22KW over hydraulic power pack Nitrogen charged noise suppressors, custom reservoir, 208 cooling pump Main engine driven variable displacement pumps Variable speed frequency inverter Install new 100 amp electrical service in main switch board for stabilizer system

Comments

THEMIS has just completed a multi-million dollar refit in the summer of 2015. Highlights include a complete new interior by Scott Carpenter throughout the vessel with all new furnishings, upholstery, new carpet & new headliner, bedding, soft goods, marble showers & vanities, LED lighting, artwork, along with all new polished nickel hardware.. The new contemporary interior compliments her beautiful African Pear and Sapele joinery with burle inlays throughout. All

exterior decks feature new custom furnishings from Murray Brothers. Other upgrades includes new Naiad 520 'at rest' stabilizers, new electronics, KVH Sat system, new HD TV receivers, new hot tub on flybridge, new tender & waverunners. In addition, her A/C systems have been serviced and/or replaced with new compressor and air handlers. Powered by twin Caterpillar 2250HP main engines with low hours and twin Caterpillar 99KW generators, both just completing a full service along with a new bottom job (9/16), running gear plus more more! Built to full ABS and AMS classification, THEMIS represents a custom pedigree Tri-Deck Motoryacht offering exceptional volume and updated to today's highest yachting standards!

Исключения

При продаже яхты исключаются личные вещи владельца.

Отказ от ответственности

Компания предоставляет описание судна или яхты добросовестно, но не может гарантировать точность этой информации, а также не ручается за техническое состояние. Покупатель должен проинструктировать своих агентов или оценщиков исследовать представленную информацию более подробно, по собственному желанию. Продажа судна или яхты, изменение цены или снятие с продажи будет происходить без предварительного уведомления.

ФОТОГРАФИИ

Main Salon



Main Salon



Main Salon



Dining Salon



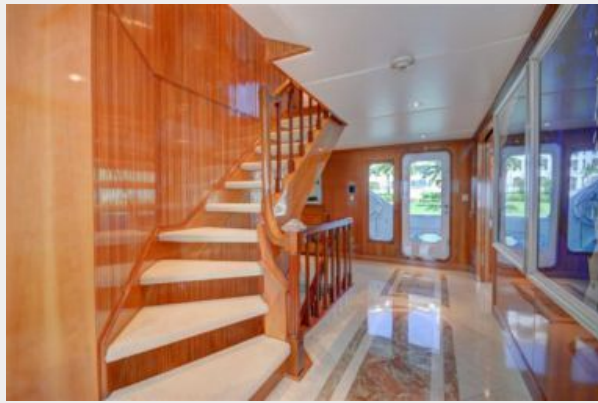
Dining Salon



Galley



Formal Entry, Main Deck



Master Stateroom



Master Stateroom, On-Deck



Master Stateroom



Master Stateroom Entry



His & Her Master Bath



His & Her Master Bath



King Guest Stateroom



King Guest Stateroom, Port



King Guest Head



King Guest Stateroom, Starboard



King Guest Stateroom



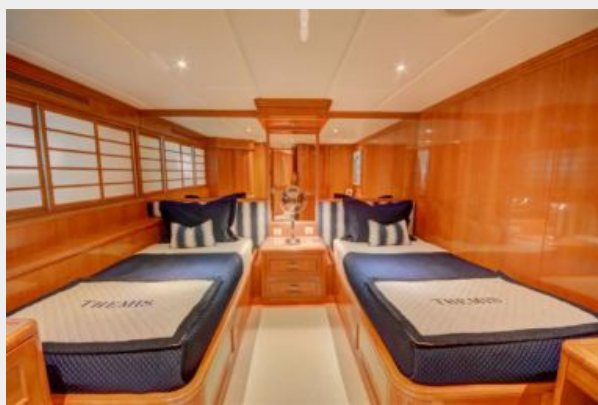
King Guest Bath



Twin Guest Stateroom, Port



Twin Guest Stateroom, Starboard



Skylounge, Upper Deck



Skylounge



Skylounge



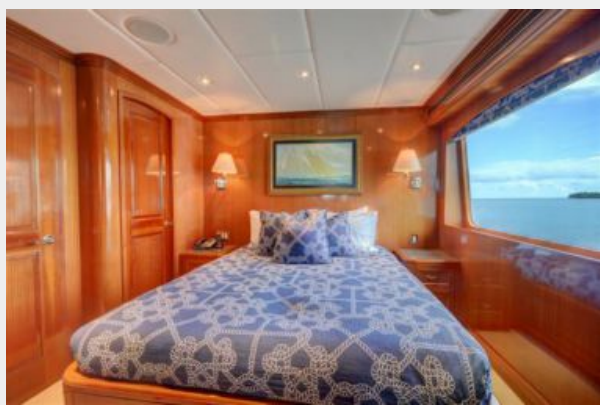
Pilothouse



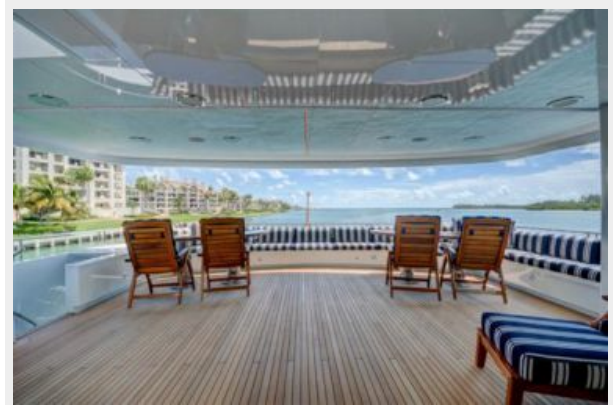
Pilothouse Helm



Captain's Cabin



Upper Aft Deck



Flybridge



Flybridge Jacuzzi



Flybridge Seating



Flybridge Seating



Flybridge Bar



Aft Deck



Aft Deck



Cockpit/Beachclub



Cockpit/Beachclub



Cockpit/Beachclub Watertoys



Crew Lounge



Control Room



Engine Room



Overhead profile



Layout



КОНТАКТЫ

Андрей Шестаков (Andrey Shestakov) – ведущий яхтенный брокер отдела продаж яхт и судов компании Shestakov Yacht Sales Inc. Официальный представитель Shestakov Yacht Sales Inc. для русскоговорящих клиентов в центральном офисе компании в Майами/Форт Лодердейл/Флорида/США.

Контактная информация

Email: **andrey@shestakovyachtsales.com**

Web: shestakovyachtsales.com

Телефоны

Краснодарский край: **+7(918)465-66-44**

США, Майами, Флорида: **+1(954)274-4435**

Время работы

Понедельник – Суббота: **9:00 - 21:00**
EDT

Воскресенье: **Закрето**

Адрес



Harbour Towne Marina, 850 NE 3rd St,
STE 213, Dania, FL 33004