

CONSTANT — DE JONG



Builder: [De Jong](#)

Year Built: 2002

Model: Motor Yacht

Price: PRICE ON APPLICATION

Location: United Kingdom

LOA: 30' 0" (9.14m)

Beam: 11' 2" (3.40m)

Min Draft: 3' 7" (1.09m)

Cruise Speed: 7 Kts. (8 MPH)

Max Speed: 7 Kts. (8 MPH)

Our experienced yacht broker, Andrey Shestakov, will help you choose and buy a yacht that best suits your needs **CONSTANT — De Jong** from our catalogue. Presently, at Shestakov Yacht Sales Inc., we have a wide variety of yachts available on our sale's list. We also work in close contact with all the big yacht manufacturers from all over the world.

If you would like to buy a yacht **CONSTANT — De Jong** or would like help answering any questions concerning purchasing, selling or chartering a yacht, please call **+1(954)274-4435**

TABLE OF CONTENTS

TABLE OF CONTENTS	2
SPECIFICATIONS	3
Overview	3
Basic Information	3
Dimensions	3
Speed, Capacities and Weight	3
Accommodations	3
Hull and Deck Information	3
Engine Information	4
DETAILED INFORMATION	5
Construction	5
Machinery	5
Electrical Systems	6
Plumbing Systems	6
Navigation Equipment	7
Domestic Equipment	7
Accommodation	8
Deck Equipment	8
Exclusions	8
Disclaimer	9
PHOTOS	10
CONTACTS	12
Contact details	12
Telephones	12
Office hours	12
Address	12

SPECIFICATIONS

Overview

Charming De Jong Dutch-built steel tug yacht with single Ford diesel, two berths, heads and rugged good looks. Equally suited to inland or coastal work, she is just delightful.

Basic Information

Category: Motor Yacht

Sub Category: Displacement

Model Year: 2002

Year Built: 2002

Country: United Kingdom

Dimensions

LOA: 30' 0" (9.14m)

Beam: 11' 2" (3.40m)

Min Draft: 3' 7" (1.09m)

Speed, Capacities and Weight

Cruise Speed: 7 Kts. (8 MPH)

Max Speed: 7 Kts. (8 MPH)

Accommodations

Total Cabins: 1

Total Berths: 2

Total Heads: 1

Hull and Deck Information

Hull Material: Steel

Hull Designer: De Elburger

Engine Information

Engines: 1

Manufacturer: Ford

Model: 2720

Engine Type: Inboard

Fuel Type: Diesel

DETAILED INFORMATION

Construction

RCD Status: The yacht conforms with the essential safety requirements of Directive 94/25EC (Recreational Craft Directive) and is categorised B.

Hull & Superstructure Construction:

- Steel round-bilged hull construction – painted blue.
- Steel decks – white painted – with beige Treadmaster non-slip pads.
- Steel wheelhouse – white painted.
- Protective rope fender.
- Varnished teak aft wheelhouse doors.
- Aluminium window surrounds.

Deck Construction:

- Aft cockpit finished in Treadplate – painted grey.

Machinery

Engine & Gearboxes:

- 1 x Ford marinised 135HP diesel engine.
- 3:1 reduction gearbox.
- Single lever throttle/shift engine controls.

Maintenance & Performance:

- Engine hours: c. 890 at August 2015.
- Cruising speed: 7 knots.

- Max speed: 7 knots.

Propulsion & Steering:

- Stainless steel propeller shaft.
- 4-blade bronze propeller.

Electrical Systems

Voltage Systems:

- 12V DC electrical system.

Battery Banks:

- House batteries (12V).
- Start batteries (24V).

Battery Chargers:

- 12V battery charger.

Alternators:

- Engine-mounted alternator.

Shore Power:

- Shore power connection.

Plumbing Systems

Fresh Water & Water Heating System:

- Pressurized cold water system.

Bilge Pumps:

- Single to engine room.

Grey & Black Water:

- Blackwater tank fitted.
- Discharge overboard or via deck discharge.

Navigation Equipment

- Steering compass.
- VHF.
- Navigation lights and chart light.

Domestic Equipment

Galley:

- Stainless steel sink to galley.
- 2-burner Wallas diesel-fired stove.

Heads/Showers:

- Manual marine WC.

Heating & Ventilation:

- Wallas heater to wheelhouse.
- Air heating to wheelhouse, heads and cabin.

Lighting:

- 4 x 12VDC to wheelhouse.
- 1 x 12VDC to heads compartment.
- 2 x 12VDC lights in owner's cabin.
- 2 x 12VDC to aft cockpit.

Accommodation

Summary of Accommodation:

- Vee-berth on forward cabin, heads compartment to port, wheelhouse with child's berth/seat to starboard, helm position to port and teak aft doors leading onto aft cockpit.
- Teak sole to wheelhouse.

Windows/Hatches:

- 2 x portholes to cabin.
- 1 x porthole to heads.
- 3 x opening windows to wheelhouse.

Interior Finish and Trim:

- Blue patterned upholstery to wheelhouse
- Cream surface countertops to galley.
- Cream bulkheads trimmed with mahogany.

Deck Equipment

Fire-fighting equipment:

- 3 x manual fire extinguishers.

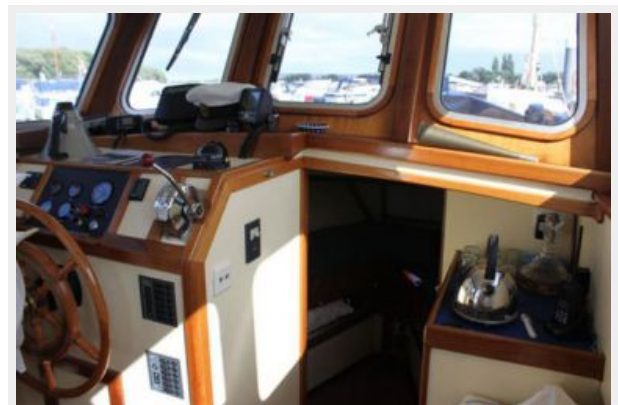
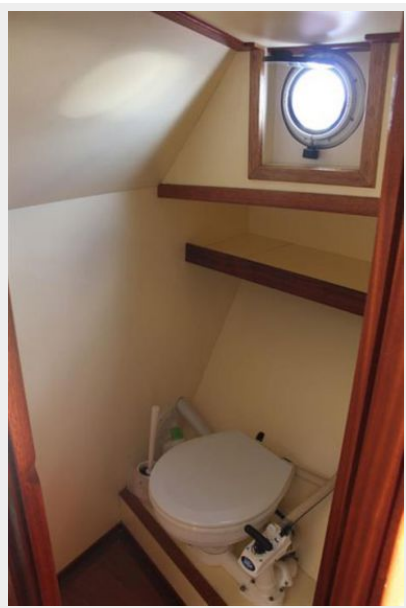
Exclusions

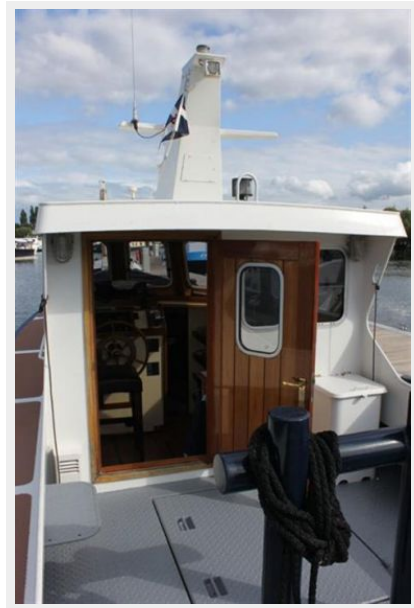
Owner's personal belongings.

Disclaimer

The Company offers the details of this vessel or yacht in good faith but cannot guarantee or warrant the accuracy of this information nor warrant the condition of the vessel. A buyer should instruct his representatives, agents, or his surveyors, to investigate such details as the buyer desires validated. This vessel or yacht is offered subject to prior sale, price change, or withdrawal without notice.

PHOTOS





CONTACTS

Andrey Shestakov, leading yacht broker of the sales department of Shestakov Yacht Sales Inc. Shestakov Yacht Sales Inc., the official representative of the Miami/Fort Lauderdale FL headquarters.

Contact details

Email: andrey@shestakovyachtsales.com

Web: shestakovyachtsales.com/en/

Telephones

USA: +1(954)274-4435

Office hours

Monday – Saturday: **9:00 - 21:00** EDT

Sunday: **closed**

Address



Harbour Towne Marina, 850 NE 3rd St,
STE 213, Dania, FL 33004