

CONSTELLATION — NAUTOR'S SWAN



Судостроитель: NAUTOR'S SWAN

Год постройки: 1972

Модель: Cruising/Racing Sailboat

Цена: ЦЕНА ЯХТЫ ПО ЗАПРОСУ

Местонахождение: United States

Длина общая: 48' 0" (14.63m)

Ширина: 13' 6" (4.11m)

Макс. осадка: 7' 8" (2.34m)

Крейс. скорость: 6 Kts. (7 MPH)

Макс. скорость: 8 Kts. (9 MPH)

Купить **Constellation — NAUTOR'S SWAN** а также выбрать подходящую вам яхту из нашего каталога яхт вам поможет опытный яхтенный брокер Андрей Шестаков. На сегодняшний день компания **Shestakov Yacht Sales Inc.** имеет большое количество яхт в собственном списке продаж, а также тесно сотрудничает со всеми крупными яхтенными производителями по всему миру.

Для того чтобы купить яхту **Constellation — NAUTOR'S SWAN** а также проконсультироваться по любому вопросу связанному с покупкой, продажей, чартером яхт позвоните по телефону **+7(918)465-66-44**.

ОГЛАВЛЕНИЕ

ОГЛАВЛЕНИЕ	2
ХАРАКТЕРИСТИКИ	5
Основная информация	5
Размеры	5
Скорость, вместимость и масса	5
Размещение	5
Корпус и палуба	5
Информация о двигателе	6
ПОДРОБНОЕ ОПИСАНИЕ	7
OVERVIEW	7
Equipment Highlights	8
ACCOMMODATIONS & MAIN SALON	9
GALLEY & DINING AREA	9
Electronics	9
ELECTRICAL EQUIPMENT	10
MECHANICAL EQUIPMENT	10
SAILS & RIGGING	10
HULL & DECK	11
Исключения	11
Отказ от ответственности	11
ФОТОГРАФИИ	13
Companionway to Cabin areas	13
US NAVAL ACADEMY MIDSHIPMEN WINNING THE NEWPORT TO BERMUDA RACE, JUNE, 1992	13
Main Salon with Settee Starboard	13
Companionway Forward	13
Forward Stateroom V-Berth	14
Pilot Berth to Port behind Dining Table	14

Forward Head	14
Aft Stateroom	14
Aft Stateroom custom widened berth for 2 adults	15
Aft Stateroom Starboard Berth	15
Aft Head	15
Galley	15
Dinette Aft Galley to Port	16
Galley, Glacier Bay Freezer/Refrigeration	16
Navigation Table	16
Raymarine C80 Chartplotter	16
Furuno 36-mile Radar, Energy Monitor/Controller, GPs, VHF	17
VHF Radios AM/FM/CD Player	17
Front of Electrical Panel	17
NEW Electrical Wiring Panel	17
Panda FWC 3.9KW Generator w/Sound Shield on custom roll-out cabinet	18
Mechanical Control Board	18
2001 Yanmar 4JH-2 76HP w/1026 hours	18
Fuel Filters	18
Cockpit	19
Racing Steering Wheel	19
Furlex Roller Furling for Genoa	19
Barient Coffee Grinders	19
Top Deck looking Aft	19
Forward from Starboard Coffee Grinder	19
Lighthouse 1501 Anchor Windlass 12V	20
Keel	20
Rigging	20
Rudder	20
КОНТАКТЫ	21

Контактная информация	21
Телефоны	21
Время работы	21
Адрес	21

ХАРАКТЕРИСТИКИ

Основная информация

Тип судна: Cruising/Racing Sailboat	Подкатегория: Cutter
Модельный год: 1972	Год постройки: 1972
Страна: United States	Кубрик: Да

Размеры

Длина общая: 48' 0" (14.63m)	Длина по ватерлинии: 39' 4" (11.99m)
Ширина: 13' 6" (4.11m)	Макс. осадка: 7' 8" (2.34m)
Трапы: 69' 0" (21.03m)	

Скорость, вместимость и масса

Крейс. скорость: 6 Kts. (7 MPH)	Макс. скорость: 8 Kts. (9 MPH)
Водоизмещение: 34100 Pounds	Вместимость воды: 110 Gallons
Вместимость сточного бака: 15 Gallons	Объем топливного бака: 100 Gallons

Размещение

Всего кают: 2	Всего коек: 5
Спальные места: 6	

Корпус и палуба

Материал корпуса: Fiberglass	Комплектация корпуса: Deep Fin
Цвет корпуса: DARK BLUE	Дизайнер корпуса: NAUTOR'S SWAN

Информация о двигателе

Двигатели: 1

Производитель: Yanmar

Модель: 4JH-2 TURBO

Тип двигателя: Inboard

Тип топлива: Diesel

ПОДРОБНОЕ ОПИСАНИЕ

OVERVIEW

“**CONSTELLATION**” has a long nautical history and has played a very important part in the sailing and military heritage of the USA. The **United States Naval Academy** owned this beautiful sailboat from December, 1979 to December, 1997, when it was sold to the current owner. She was sailed and won the **653-mile Newport-to-Bermuda Race for the first time in Naval Academy history in June, 1992, with Ensign Kyle Weaver at the helm along with his 8 midshipmen crew. Ensign Weaver was the youngest skipper to win this race and bring home the St. David's Lighthouse Trophy.** This incredible accomplishment is still remembered among midshipmen everywhere. Today, **Commander Weaver** is still serving his country in the **US Navy**.

The “**CONSTELLATION**” was designed by **Sparkman & Stephens of New York and built in 1972 (Hull 11) in Finland with the Swan “Passion for Craftsmanship”**. Nautor’s Swan has been the true sailor’s choice for close to a half a century by designing and building luxurious, high performance yachts in Northern Finland. Swan has a strong heritage, skilled craftsmen, and pursuit of excellence in every aspect of the build.

The current owner took three (3) years refitting the “**CONSTELLATION**” in order to make her comfortable for cruising, mechanically sound, and capable of sailing any blue water challenge. Since 1997, the boat has received complete upgrades and refits including new teak decks, total new electrical wiring, new plumbing, new stainless steel fuel tanks, new water and holding tanks, new Yanmar 76HP turbo engine, new Panda 3.9KW Generator, which is located in a custom slide-out cabinet for easy access. She has been refitted with (2) Bariant 28 3-speed coffee grinders, (2) Andersen 62ST 2-speed electric winches, (2) air conditioning/heating compressors, water maker (virgin, never used), Zeda water purifier, and the list goes on and on.

“**CONSTELLATION**” is a cutter rig with only 46 having been built from 1971-1975. The original boat design was changed in the 1990’s and is now known as a Nautor’s Swan 48-2 with emphasis on cruising versus racing, although the racing prowess and success is achievable, if desired. The “**CONSTELLATION**” is a once in a life time opportunity to own a part of **America’s United States Naval Academy heritage** and still enjoy a magnificent cruising wonder and adventure on any of the world’s waters.

We are very proud to represent this pristine Swan 48 and welcome the opportunity to show her to you. Give us a call. You will not be disappointed!

BE SURE TO OPEN AND VIEW THE 2 VIDEOS OF "CONSTELLATION" SAILING TO KEY WEST! THE VIDEOS SHOW YOU EXACTLY WHAT SHE IS CAPABLE OF DOING AND WHY SHE IS SO RESPECTED ON THE RACING CIRCUIT!

Equipment Highlights

Electronics

- Depthsounder
- Radar - Furuno 36-mile
- Log-Speedometer
- Wind Speed and Direction
- Navigation Center
- Plotter - Raymarine C80 Color
- Radio - ICOM 802 SSB
- Compass
- CD Player - Pioneer XM-ready AM/FM/CD Player
- GPS - Furuno GPS Navigator GP-31
- Cockpit Speakers
- VHF - ICOM IC-M45/ICOM IC-M604

Sails

- Fully Battened Mainsail
- Spinnaker - (3)
- Gennaker/Cruising Spinnaker - (2)
- Genoa - 155% Cruising Genoa w/Roller Furling

Rigging

- Steering Wheel - (2) Racing Wheel & Cruising Wheel
- Electric Winch
- Spinnaker Pole

Inside Equipment

- Electric Bilge Pump
- Oven
- Marine Head - (2) Forward & Aft
- Air Conditioning - (2) 12,000 & 16,000 BTU
- Heating
- Hot Water
- Refrigerator - 12V Glacier Bay
- Fresh Water Maker - Spectra 8gal/hr w/zeta cleaning systems (2002) never used
- Battery Charger

Electrical Equipment

- Shore Power Inlet
- Generator - Panda 3.9 KW (2001)

Outside Equipment/Extras

- Teak Cockpit
- Teak Sidedecks

Covers

- Bimini Top

ACCOMMODATIONS & MAIN SALON

As you enter the cabin from the cockpit you will notice a beautiful teak interior with arched doorways, teak and holly sole and 6'4"+ headroom. The full galley is to port with the U-shaped dinette just forward. There is a single pilot berth on port and starboard with a sofa to starboard opposite the dinette. The Navigation Station is just to starboard as you enter the cabin area.

All the way forward is the Stateroom with a V-berth and a head w/shower. Aft of the companionway stairs is the large aft Stateroom with 2 berths and an ensuite head and shower. The aft berth to port has been refitted with an oversized berth to accommodate 2 adults for added comfort. All 6 Stateroom berths have 5" custom made mattresses. The Settee has standard foam.

The lighting and hatches provide excellent light and ventilation.

- Air Conditioning/Heating throughout the vessel are provided by (2) **new compressors (2001)** - 12,000 BTU & 16,000 BTU
- **New Cabin Sole 2001**

GALLEY & DINING AREA

- Glacier Bay Refrigeration-12V water cooled compressor - with (2) compartments - Holding Plates in the Freezer and Refrigerator Boxes. Insulated with Glacier Bay Ultra R "Vacuum" panels.
- Force 10 3-Burner Propane Stove with Oven
- Electric Solenoid
- Double Stainless Steel Sink
- (2) 20# Propane Tanks with select valve
- Hot & Cold Pressure Fresh water foot pump or saltwater
- Spectra 8 gal/hr 12V Water Maker w/Zeta Cleaning Systems. No need to flush. **Installed 2002 (never used).**

Electronics

- Raymarine C80 Color Chartplotter wired for Chart Table or helm

- Furuno 36-mile Radar
- Energy Monitor/Controller
- Furuno GPS Navigator GPS-31
- ICOM IC-M45 VHF
- ICOM IC-M604 w/DSC VHF with cockpit mike control
- ICOM IC-M802 SSB Transceiver with ICOM SP-24 Speaker
- Pioneer XM-ready AM/FM/CD Player/Tuner with speakers in salon and cockpit
- Wind/Speed/Direction Indicators which can be connected to a laptop
- (2) VHF Antennas -- one on mast head; one on aft deck radar mast

ELECTRICAL EQUIPMENT

2001 Panda 3.9KW Generator (187 hours) with Sound Shield. The Generator is mounted on a custom made slide-out cabinet in the Main Salon for great accessibility and convenience.

- (3) 8D Gel Cell House Batteries 600+ Amps
- (1) 4D Gel Cell Engine Starting Battery
- Ample Power Energy Monitor/Controller
- All NEW Electrical Wiring

MECHANICAL EQUIPMENT

- **2001 Yanmar 4JH-2 76HP Turbo Diesel engine with 1026 hours.**
- 1-1/2 Aquamet Shaft
- Shaft Gland
- 3-blade adjustable pitch Max prop.
- Fuel Polishing System which also provides capability of moving fuel from one tank to the second tank
- (2) Model 500FG Fuel Filters/Water Separators

SAILS & RIGGING

SAILING & RIGGING EQUIPMENT **RIGGING EQUIPMENT:**

- (2)Barient 28 Winches
- (2)Barient 3-speed coffee grinders
- (2)Andersen 62+Electric ST 2-speed Winches
- (2)Lewmar 48 Winches ST
- (2)Steering Wheels - (1)Racing & (1)Cruising
- Furlex Roller Furling 400S for Genoa

- Roo Rigging on uppers and back stay
- Boom Vang
- Lazy Jacks
- Halyard Winches on Mast for Main, Spinnaker, and Genoa
- **All new halyards 2007**
- Aluminum Mast
- (1) Nauter Hydraulic Back Stay Adjuster
- (1) Spinnaker Pole

SAIL INVENTORY:

- **All sails are stored offsite in an air conditioned sail locker to prevent deterioration.**
- Fully Battened Cruising Main-Dacron
- 155% Cruising Genoa-Dacron with Roller Furling
- (2) Cruising Spinnakers
- (1) Sock
- (1) Racing Main-UK Sailmakers Laminate
- (2) #1 155% Genoa Laminate
- (1) #2 Racing Jib North Sails 3DL Laminate
- (1) #3 Racing Jib Laminate
- (1) 3/4 oz. Spinnaker
- (1) 1-1/2 oz. Spinnaker
- (1) 7/8 oz. Spinnaker

HULL & DECK

- **NEW BOTTOM PAINT JANUARY, 2015!**
- Custom Cradle for out-of-the-water storing
- Lighthouse Windlass w/foot pedals
- **New Teak Deck by Teak Decking 2001**
- **SOLID FIBERGLASS**
- **Core Deck with glue down teak deck overlay**
- Lighthouse 1501 Anchor Windlass 12V
- 45# CQR Anchor with 150Ft 3/8" Galvanized Chain

Исключения

При продаже яхты исключаются личные вещи владельца.

Отказ от ответственности

Компания предоставляет описание судна или яхты добросовестно, но не может

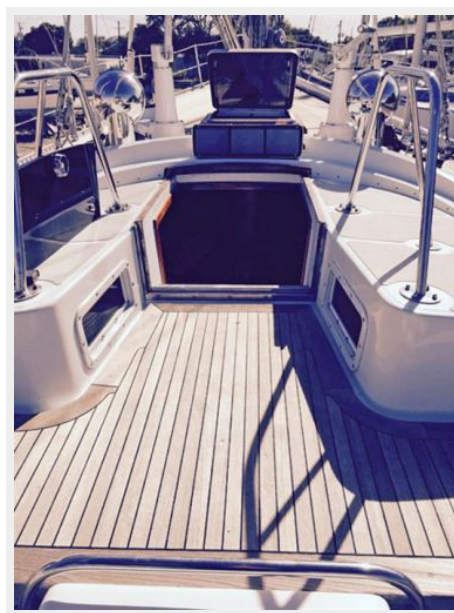
гарантировать точность этой информации, а также не ручается за техническое состояние. Покупатель должен проинструктировать своих агентов или оценщиков исследовать представленную информацию более подробно, по собственному желанию. Продажа судна или яхты, изменение цены или снятие с продажи будет происходить без предварительного уведомления.

ФОТОГРАФИИ

**US NAVAL ACADEMY MIDSHIPMEN
WINNING THE NEWPORT TO BERMUDA
RACE, JUNE, 1992**



Companionway to Cabin areas



Companionway Forward



Main Salon with Settee Starboard



Pilot Berth to Port behind Dining Table



Forward Stateroom V-Berth



Forward Head



Aft Stateroom



Aft Stateroom custom widened berth for 2 adults



Aft Stateroom Starboard Berth



Aft Head



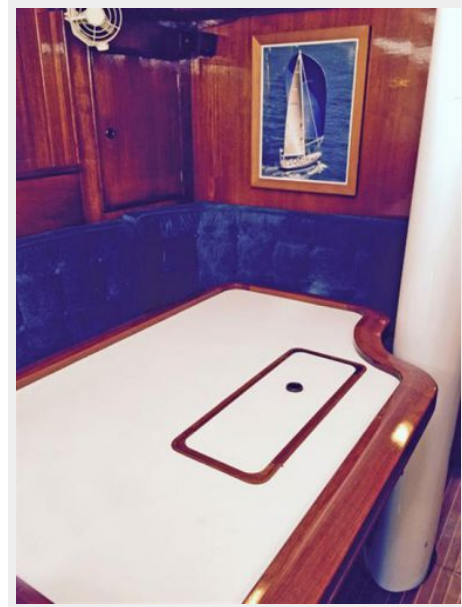
Galley



Galley, Glacier Bay Freezer/Refrigeration



Dinette Aft Galley to Port



Navigation Table



Raymarine C80 Chartplotter



Furuno 36-mile Radar, Energy Monitor/Controller, GPs, VHF



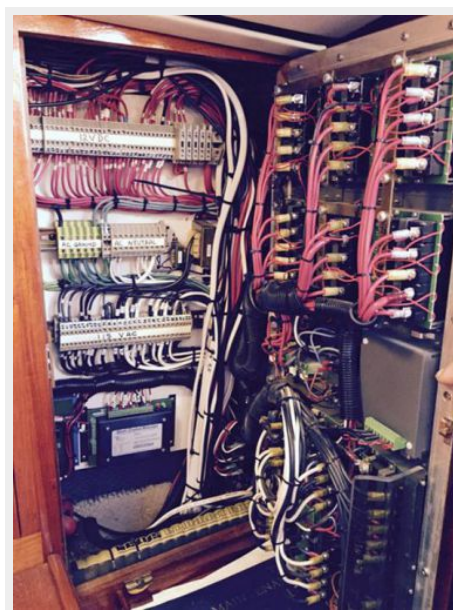
VHF Radios AM/FM/CD Player



Front of Electrical Panel



NEW Electrical Wiring Panel



Panda FWC 3.9KW Generator w/Sound Shield on custom roll-out cabinet



Mechanical Control Board



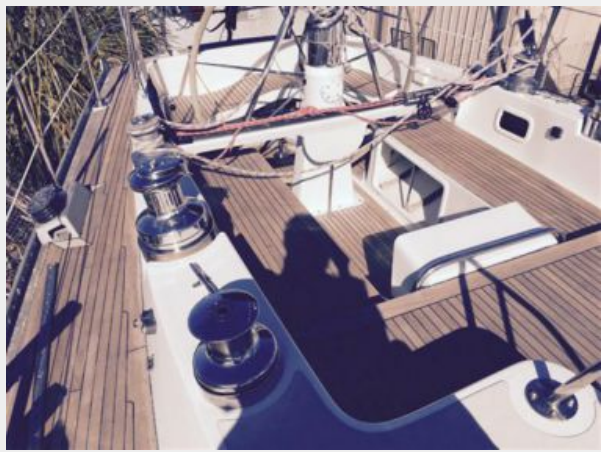
2001 Yanmar 4JH-2 76HP w/1026 hours



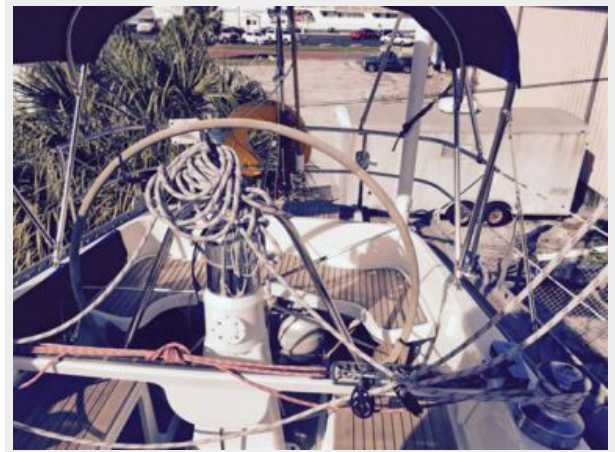
Fuel Filters



Cockpit



Racing Steering Wheel



Furlex Roller Furling for Genoa



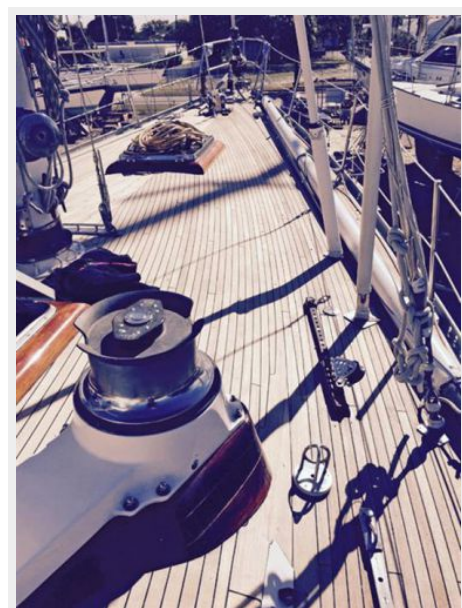
Bariet Coffee Grinders



Top Deck looking Aft



Forward from Starboard Coffee Grinder



Lighthouse 1501 Anchor Windlass 12V



Keel



Rudder



Rigging



КОНТАКТЫ

Андрей Шестаков (Andrey Shestakov) – ведущий яхтенный брокер отдела продаж яхт и судов компании Shestakov Yacht Sales Inc. Официальный представитель Shestakov Yacht Sales Inc. для русскоговорящих клиентов в центральном офисе компании в Майами/Форт Лодердейл/Флорида/США.

Контактная информация

Email: andrey@shestakovyachtsales.com

Web: shestakovyachtsales.com

Телефоны

Краснодарский край: **+7(918)465-66-44**

США, Майами, Флорида: **+1(954)274-4435**

Время работы

Понедельник – Суббота: **9:00 - 21:00**
EDT

Воскресенье: **Закрето**

Адрес



Harbour Towne Marina, 850 NE 3rd St,
STE 213, Dania, FL 33004