

DRAMALESS — HATTERAS



Builder: HATTERAS

Year Built: 1981

Model: Motor Yacht

Price: PRICE ON APPLICATION

LOA: 82' (24.99mm)

Beam: 18.58

Max Draft: 5' 6" (1.68mm)

Cruise Speed: 12 Knots Kts. (14 MPH)

Max Speed: 18 Knots Kts. (21 MPH)

Our experienced yacht broker, Andrey Shestakov, will help you choose and buy a yacht that best suits your needs **DRAMALESS — HATTERAS** from **our catalogue**. Presently, at **Shestakov Yacht Sales Inc.**, we have a wide variety of yachts available on **our sale's list**. We also work in close contact with all the big **yacht manufacturers** from all over the world.

If you would like to buy a yacht **DRAMALESS — HATTERAS** or would like help answering any questions concerning purchasing, selling or chartering a yacht, please call **+1(954)274-4435**

TABLE OF CONTENTS

TABLE OF CONTENTS	2
SPECIFICATIONS	4
Overview	4
Basic Information	4
Dimensions	4
Speed, Capacities and Weight	4
Accommodations	4
Hull and Deck Information	5
Engine Information	5
PHOTOS	6
Bow	6
Foredeck	6
Starboard Side Deck	6
Cockpit	6
Swim Platform	6
Wet Bar	6
Aft Deck	7
Aft Deck	7
Salon	7
Salon	7
Wheelhouse	7
Formal Dining Salon	7
Galley	8
Master Stateroom	8
Master Bath	8
His and Hers Head	8
VIP Stateroom	8
VIP Head	8

Guest Stateroom	9
Engine Room	9
Engine Room	9
Engine Room	9
CONTACTS	10
Contact details	10
Telephones	10
Office hours	10
Address	10

SPECIFICATIONS

Overview

VIRTUAL TOUR: ***DRAMALESS*** is a beautiful, well cared for Hatteras. The climate controlled aft deck is enclosed, plus it is equipped with a full service bar making this aft deck the perfect place to entertain guests. The yacht also has a functional cockpit and swim platform to easily dock your fishing boat, or to use as your personal beach club. The comfortable fly bridge makes an idea spot to enjoy the views. The main salon windows are large and low, allowing for excellent views of the scenery from the air-conditioned interior. Below deck, ***DRAMALESS*** offers her guests three en-suite staterooms. Separate crew quarters for up to four is located forward of the galley. Perfectly designed for Caribbean, Bahamian & coastal cruising. ***DRAMALESS*** can be your new Mothership for the island life.

Basic Information

Category: Motor Yacht

Sub Category: Flybridge

Model Year: 1980

Year Built: 1981

Dimensions

LOA: 82' (24.99mm)

Beam: 18.58

Max Draft: 5' 6" (1.68mm)

Speed, Capacities and Weight

Cruise Speed: 12 Knots Kts. (14 MPH) **Max Speed:** 18 Knots Kts. (21 MPH)

Water Capacity: 800 Gallons

Fuel Capacity: 1650 Gal Gallons

Accommodations

Total Cabins: 5

Total Heads: 5

Hull and Deck Information

Hull Material: Fiberglass

Engine Information

Engines: 2

Manufacturer: Detroit Diesel

Engine Type: Inboard

Fuel Type: Diesel

PHOTOS

Bow



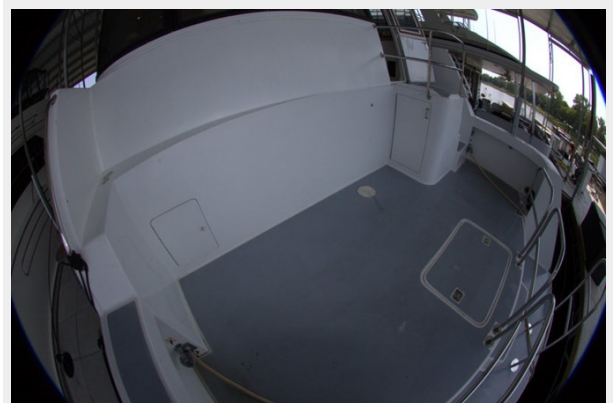
Foredeck



Starboard Side Deck



Cockpit



Swim Platform



Wet Bar



Aft Deck



Aft Deck



Salon



Salon



Wheelhouse



Formal Dining Salon



Galley



Master Stateroom



Master Bath



His and Hers Head



VIP Stateroom



VIP Head



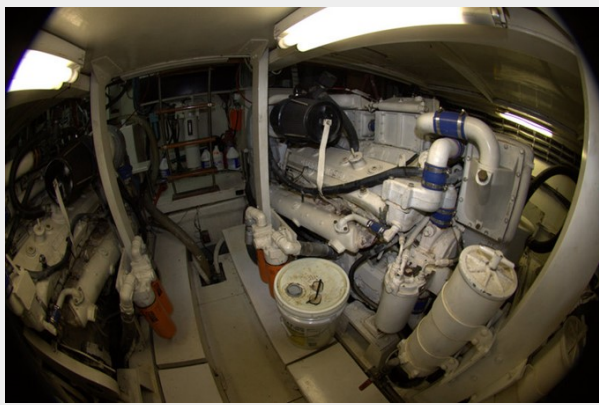
Guest Stateroom



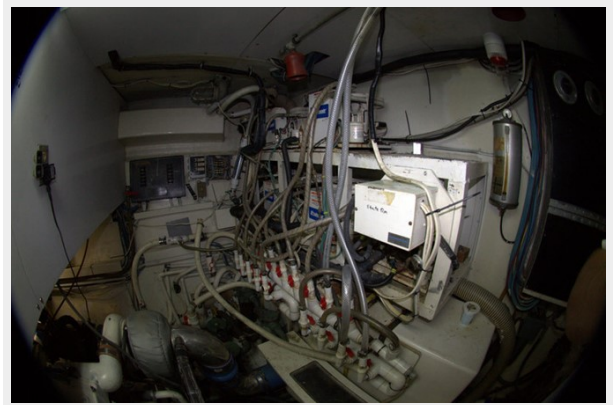
Engine Room



Engine Room



Engine Room



CONTACTS

Andrey Shestakov, leading yacht broker of the sales department of Shestakov Yacht Sales Inc. Shestakov Yacht Sales Inc., the official representative of the Miami/Fort Lauderdale FL headquarters.

Contact details

Email: **andrey@shestakovyachtsales.com**

Web: shestakovyachtsales.com/en/

Telephones

USA: **+1(954)274-4435**

Office hours

Monday – Saturday: **9:00 - 21:00** EDT

Sunday: **closed**

Address



Harbour Towne Marina, 850 NE 3rd St, STE 213, Dania, FL 33004