

AZIMUT 105 — AZIMUT



Builder: [AZIMUT](#)

Year Built: 2007

Model: Motor Yacht

Price: PRICE ON APPLICATION

Location: Italy

LOA: 105' 0" (32.00m)

Beam: 24' 0" (7.32m)

Max Draft: 6' 7" (2.01m)

Cruise Speed: 22 Kts. (25 MPH)

Max Speed: 25 Kts. (29 MPH)

Our experienced yacht broker, Andrey Shestakov, will help you choose and buy a yacht that best suits your needs **AZIMUT 105 — AZIMUT** from our catalogue. Presently, at Shestakov Yacht Sales Inc., we have a wide variety of yachts available on our sale's list. We also work in close contact with all the big yacht manufacturers from all over the world.

If you would like to buy a yacht **AZIMUT 105 — AZIMUT** or would like help answering any questions concerning purchasing, selling or chartering a yacht, please call **+1(954)274-4435**

TABLE OF CONTENTS

TABLE OF CONTENTS	2
SPECIFICATIONS	4
Overview	4
Basic Information	4
Dimensions	4
Speed, Capacities and Weight	4
Accommodations	5
Hull and Deck Information	5
Engine Information	5
DETAILED INFORMATION	6
Vessel equipment and upgrades	6
Mooring	7
Salon	7
Flybridge	7
Main Deck	8
Garage	8
Galley	8
On deck Master Cabin and bathroom	9
Vip Cabins	9
Guest Twin Cabin	9
Crew Quarters	10
Laundry room	10
Engine Room	10
Exclusions	11
Disclaimer	11
PHOTOS	12
photos are a reference, when she was delivered brand new	12
photos are a reference, when she was delivered brand new	12

photos are a reference, when she was delivered brand new	12
photos are a reference, when she was delivered brand new	13
CONTACTS	20
Contact details	20
Telephones	20
Office hours	20
Address	20

SPECIFICATIONS

Overview

2007 AZIMUT 105 @ Viareggio, Italy *photos are a reference, when she was delivered brand new*

Basic Information

Category: Motor Yacht

Sub Category: Flybridge

Model Year: 2007

Year Built: 2007

Country: Italy

Vessel Top: Hardtop

Fly Bridge: Yes

Cockpit: Yes

Dimensions

LOA: 105' 0" (32.00m)

Beam: 24' 0" (7.32m)

Max Draft: 6' 7" (2.01m)

Speed, Capacities and Weight

Cruise Speed: 22 Kts. (25 MPH)

Max Speed: 25 Kts. (29 MPH)

Water Capacity: 650 Gallons

Holding Tank: 375 Gallons

Fuel Capacity: 4200 Gallons

Accommodations

Total Cabins: 4

Total Berths: 6

Sleeps: 8

Total Heads: 4

Captain Cabin: True

Crew Cabin: 2

Crew Berths: 4

Crew Sleeps: 5

Crew Heads: 3

Hull and Deck Information

Hull Material: GRP

Engine Information

Engines: 2

Manufacturer: MTU

Model: 16V 2000 Series

Engine Type: Inboard

Fuel Type: Diesel

DETAILED INFORMATION

Vessel equipment and upgrades

2010 Full paint job in AwlGrip

Underwater Exhausts, make boat run cleaner and more quietly.

Rudder/ steering system upgrade.

Trac Stabilizers

Tropical environment package, Cruise Air, Air conditioning system.

1800 gallon per/day Aquamatic fully automated watermaker.

2 x A-Sea shorepower converters, connect to single or three phase power on shore, 50hz or 60hz from 208V to 480V.

3 cameras security CCTV with DVR system aft deck, sides and engine room. Monitors in pilothouse and crew area.

Six high power halogen underwater lights aft.

Panasonic Telephone and intercommunication system through-out boat (Units in Salon, Cpts. Cabin, Pilothouse, Master Cabin, all guest cabins)

Electronics

2 x Furuno Radars / GPS

Weather Fax

Furuno Depthsounders HF/LF

Azimut/Cantalupi ships monitoring computer, includes controls for lights, ships equipment and alarm monitoring.

Furuno VHF

Furuno loadhailer.

Vessel intercom system, (pilothouse, flybridge, engine room, lazarette, aft deck, bow)

ACR Spotlight

Sidepower Hydraulic Bow Thruster

Fleet 55 Sat Com.

Sea Tel satellite TV Dome.

Mooring

2 x Anchors with 400ft chain.

2 x Maxwell 6000, 3 phase electrical windlasses with frequency drive variable speed controls.

2 x Maxwell Capstans on aft deck.

Salon

Hidden TV, raises out of Cabinet, with plenty of room to store DVD's and Video Games.

Logitech remote controls Ipad, Blu Ray player, stereo radio, satellite systems, includes Bluetooth A/V system and 2 zones for Salon and exterior area.

Surround sound stereo + speakers.

Bar area with Ice Maker and sink.

Dining Table with seating for 10 people.

Flybridge

Flybridge helm station with Furuno navigational equipment, spotlight control, intercom.

Marble Bar area with icemaker, fridge and sink.

Jacuzzi, Hot Tub with teak surround and sun pad.

Dining area with seating for 8 people.

Lounging and sunbathing areas.

4 x Teak sunloungers

Teak Shower

Electric retractable sun awnings/ bimini tops fwd and aft.

Stainless steel BBQ and Marble counter top.

2 x EV 12 person liferafts

12 x lifejackets

Epirb

Main Deck

3 Emergency Fire Hose locations.

Sun Bathing area on Bow with separate stereo volume control.

Aft Deck dining table with seating

Teak Decks

Side gangway boarding ladder

Aft deck hydraulic passerelle.

Hydraulic Garage door opens to reveal lazarette and swimplatform area.

Shower.

Aft deck sink.

Day head with marble floor and vanity.

Garage

Hydraulic launching cradles for Jet Ski and Tender

Workbench with stainless steel fixed tool chest.

Hanging rails for dive equipment, lines various toys.

Emergency/direct line steering system.

Electrical room, with shorepower converters and steering system.

Hydraulic room, included air compressor and fire suppression system.

Glendenning electrical shorepower cord deployment/recovery system.

Galley

Miele electric stove.

Stainless steel counter tops.

Sub-zero stainless steel fridge.

2 x GE stainless steel fridge/freezers.

Microwave

Electric Oven.

2 x Sinks with Insinkerator garbage disposals.

Trash compactor.

Ice maker

Dishwasher

On deck Master Cabin and bathroom

Refit of woodwork 2013

TV, DVD, satellite and stereo system with Logitech remote control.

Large windows look out both sides for great view and natural light,

Electric curtains/blinds.

Jacuzzi tub in bathroom

His and hers marble vanities.

Marble floors and shower.

Vip Cabins

Large windows look out at water level for spectacular views

TV, DVD, Satellite and Stereo.

Ensuite bathroom with teak shower and marble vanity.

Guest Twin Cabin

TV, DVD, Satellite and Stereo.

Ensuite bathroom with teak shower and marble vanity.

Crew Quarters

CCTV monitoring display.

TV, DVD, satellite and stereo.

Seating and dining area for 5.

Miele washing machine and dryer.

Captains Cabin with ensuite bathroom, TV, DVD, satellite and stereo.

2 x Crew cabin with twin bunks

Crew head with shower.

Laundry room

Miele Washing machine

Miele Dryer

Engine Room

2 x MTU 16V 2000 series. M91 1850hp

65KW Kohler Generator 60hz 3531 hrs

39.5KW Kohler Generator 60hz 3544 hrs

50 gal clean/dirty oil storage tank

Oil change pump system.

Variable speed fan system with temperature sensitive automated speed controls.

Fresh Water pump system 220v 3 phase, 24V or dock pressure with filter.

Trac Stabilizers

Tropical environment package, Cruise Air, Air conditioning system.

1800 gallon per/day Aquamatic fully automated watermaker.

Fire/Bilge water pumps with interchangeable manifold for dual function usage.

Fuel transfer system.

Exclusions

Owner's personal belongings.

Disclaimer

The Company offers the details of this vessel or yacht in good faith but cannot guarantee or warrant the accuracy of this information nor warrant the condition of the vessel. A buyer should instruct his representatives, agents, or his surveyors, to investigate such details as the buyer desires validated. This vessel or yacht is offered subject to prior sale, price change, or withdrawal without notice.

PHOTOS

photos are a reference, when she was delivered brand new



photos are a reference, when she was delivered brand new



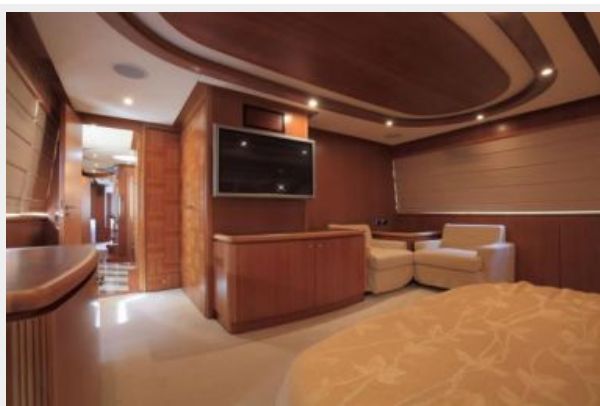
photos are a reference, when she was delivered brand new





photos are a reference, when she was delivered brand new



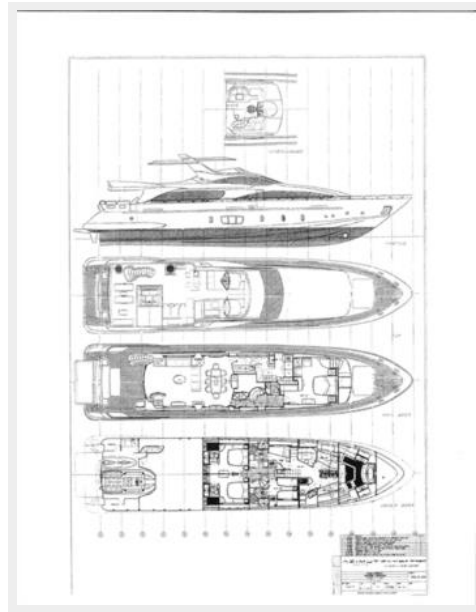












CONTACTS

Andrey Shestakov, leading yacht broker of the sales department of Shestakov Yacht Sales Inc. Shestakov Yacht Sales Inc., the official representative of the Miami/Fort Lauderdale FL headquarters.

Contact details

Email: andrey@shestakovyachtsales.com

Web: shestakovyachtsales.com/en/

Telephones

USA: +1(954)274-4435

Office hours

Monday – Saturday: **9:00 - 21:00** EDT

Sunday: **closed**

Address



Harbour Towne Marina, 850 NE 3rd St,
STE 213, Dania, FL 33004