

PAPA WHISKEY — HATTERAS



Судостроитель: HATTERAS

Год постройки: 2014

Модель: Моторная яхта

Цена: **ЦЕНА ЯХТЫ ПО ЗАПРОСУ**

Местонахождение: United States

Длина общая: 60' 11" (18.57m)

Ширина: 18' 2" (5.54m)

Мин. осадка: 4' 6" (1.37m)

Макс. осадка: 4' 6" (1.37m)

Крейс. скорость: 25 Kts. (29 MPH)

Макс. скорость: 31 Kts. (36 MPH)

Купить **Papa Whiskey — HATTERAS** а также выбрать подходящую вам яхту из нашего **каталога яхт** вам поможет опытный яхтенный брокер Андрей Шестаков. На сегодняшний день компания **Shestakov Yacht Sales Inc.** имеет большое количество яхт в **собственном списке продаж**, а также тесно сотрудничает со всеми крупными **яхтенными производителями** по всему миру.

Для того чтобы купить яхту **Papa Whiskey — HATTERAS** а также проконсультироваться по любому вопросу связанному с покупкой, продажей, чартером яхт позвоните по телефону **+7(918)465-66-44**.

ОГЛАВЛЕНИЕ

ОГЛАВЛЕНИЕ	2
ХАРАКТЕРИСТИКИ	4
Обзор	4
Основная информация	4
Размеры	4
Скорость, вместимость и масса	4
Размещение	5
Корпус и палуба	5
Информация о двигателе	5
ПОДРОБНОЕ ОПИСАНИЕ	6
Description	6
Additional Details	6
Exterior Finish & Construction	7
Hardware & Miscellaneous	8
Engine Compartment & Bilge	9
Performance Specifications	9
Electrical Systems	10
Flybridge & Bridge Deck	10
Aft Deck	11
Sport Deck	12
Galley	12
Salon	13
Companionway	13
Master Stateroom	13
Master Head	14
Bow Guest Stateroom	14
Port Guest Stateroom	15
Guest Head	15

Storage/Utility Room	15
Navigation	16
Исключения	16
Отказ от ответственности	16
ФОТОГРАФИИ	17
КОНТАКТЫ	26
Контактная информация	26
Телефоны	26
Время работы	26
Адрес	26

ХАРАКТЕРИСТИКИ

Обзор

New to the market. Only 60MY on the market with Sea Keeper Gyro's. In mint condition with only 235 hours. Loaded with lift, tender and all electronics and rigging.

Основная информация

Тип судна: Моторная яхта

Подкатегория: Flybridge with Euro Transom

Модельный год: 2014

Год постройки: 2014

Страна: United States

Верх: Hardtop

Открытая палуба мостика: Да

Размеры

Длина общая: 60' 11" (18.57m)

Длина по ватерлинии: 53' 4" (16.26m)

Ширина: 18' 2" (5.54m)

Мин. осадка: 4' 6" (1.37m)

Макс. осадка: 4' 6" (1.37m)

Скорость, вместимость и масса

Крейс. скорость: 25 Kts. (29 MPH)

Дальность на крейсерской скорости: 375

Макс. скорость: 31 Kts. (36 MPH)

Водоизмещение: 87000 Pounds

Чистый вес: 45000 Pounds

Вместимость воды: 250 Gallons

Вместимость сточного бака: 100 Gallons **Объем топливного бака:** 1200 Gallons

Размещение

Всего кают: 3

Всего коек: 4

Спальные места: 6

Всего ком. состава: 2

Корпус и палуба

Материал корпуса: Fiberglass

Материал палубы: Fiberglass Sandwich

Комплектация корпуса: Modified V-Hull

Цвет корпуса: Cloud White

Отделка корпуса: Fiberglass

Дизайнер корпуса: Hatteras Yachts

Дизайнер экстерьера: Hatteras Design Team

Дизайнер интерьера: Hatteras Yachts

Информация о двигателе

Двигатели: 2

Производитель: Caterpillar

Модель: C-18 1135

Тип двигателя: Inboard

Тип топлива: Diesel

ПОДРОБНОЕ ОПИСАНИЕ

Description

"Papa Whiskey" features a spacious interior with a wide-open salon/galley living area with a three-stateroom, two-head arrangement that includes a 130 sq. ft. full beam master stateroom midship, a VIP stateroom forward and guest bunks to port. Perhaps the most impressive thing about the Hatteras 60MY is how it feels like so much more...more room, more luxury, more everything.

Additional Details

A Cut Above. The best place to take in the sights on the 60 is clearly the flybridge, where beautiful views, fresh air, and easy-going entertainment areas provide a brilliant backdrop for any cruise. The standard layout features a centerline helm with twin chairs and space for multiple flat-screen displays and navigational aids. Guests can spread out and socialize on big benches to port and to the stern. Add an optional davit and dinghy (up to 10 feet) on the aft overhang, or enhance this space with a mega-sized sun lounge and sun pad.

Dynamic Aft Deck. Down from the flybridge, the 135 sq. ft. aft deck is bigger than those found on many larger motor yachts. A molded, curved settee runs the length of the transom and provides quick access to the swim platform from either side. A second aft deck design eliminates the standard aft bulkhead and instead uses stainless-steel railings and tempered, laminated glass to encase the deck. This arrangement provides more usable space and allows for the installation of an optional passerelle and davit to facilitate Mediterranean-style mooring and dinghy storage on the swim platform.

User-Friendly Exterior. Side decks measuring almost 13" across make working the lines easy and safe on the 60. These side decks also provide access to a storage locker on the port side and lead all the way forward to a molded bench seat on the bow deck.

Solid Fiberglass Hull. Like all Hatteras models, the 60 is founded on a solid fiberglass bottom that includes sturdy support in key areas like the hull tunnel, shaft log, and strut locations. Divinycell coring is infused into the hull sides, decks, and superstructure to add stiffness and reduce weight. The hull also benefits from an advanced variable-deadrise design that utilizes large propeller tunnels to reduce draft and increase efficiency.

Scenic Salon. A three-panel glass door framed in stainless steel slides opens to allow entrance to the 60's airy salon (the panels stack to port and create an extra large, patio-like portal to the aft deck). The salon itself features a large sofa opposite a smaller settee — perfect for casual conversation. A 36" flat-screen TV is mounted under the galley countertop, and oversized frameless windows provide an unobstructed, panoramic view of the horizon all around.

Galley & Country Kitchen. A single step up from the salon leads to the U-shaped galley and country kitchen. Highlights here include solid-surface countertops and backsplashes for long-lasting durability, as well as an upright refrigerator/freezer, two-burner cook top, convection/microwave oven, and stainless-steel sink. Custom cabinetry with a rich mahogany finish provides a luxury feel and loads of storage for food, silverware, and cookware. A large, circular dinette to port calls to mind a casual country kitchen typically found on larger yachts; it provides seating for six. For those who prefer a lower helm, one is available as an option in lieu of the country kitchen.

Full Beam Master. Owners who plan to spend a lot of time aboard will definitely appreciate the full-beam master stateroom with tapered king-sized berth, vanity to starboard, and large atmospheric portlights. Cedar-lined hanging lockers and twin dressers provide abundant storage for traveling clothes and gear, and the 19" flat-screen TV and stereo speakers offer low-key entertainment after a long day. To port, a private head with solid-surface countertops also includes a shower or full-size tub with tempered glass sliding door, owner's choice.

Hospitable Host. The 60 features two generous guest cabins, one in the bow and one to port, with a shared head on the starboard side. A spacious VIP stateroom forward features a tapered queen berth that lifts to reveal a cedar-lined storage compartment below. Another cedar-lined hanging locker and a pair of cabinets provide additional stowage for extended voyages. The remaining stateroom has twin crisscross bunks that are ideal for kids or crewmembers.

Enviably Engine Room. Whether entered through the aft deck hatch or the optional bustle door in the transom, the heart of the 60 lies in her spacious engine room. Overhead clearance is unbelievable, granting unhindered access to the twin CAT C18 diesel engines (1,135 hp). The fuel tank, located close to the center of buoyancy, distributes weight evenly for improved performance and efficiency as fuel is consumed.

Exterior Finish & Construction

- Isophthalic/NPG gel coat, exterior layer, white (all areas except hull)
- Blister resistant vinylester gel coat (hull)
- Painted hull and superstructure for improved cosmetics & increased durability
- Polymer/copper based anti-fouling bottom paint
- Painted boot stripe, linear polyester/polyurethane coating
- Decks, non-skid surface, polyurethane paint with polymeric beads
- Solid fiberglass, resin-infused hull bottom, with premium vinylester resins
- Hull sides of resin infused composite construction with PVC foam core and premium vinylester resins
- Solid fiberglass, resin-infused longitudinal stringers
- Steel resin infused into longitudinal stringers at key locations to create engine foundations
- Bulkheads, athwartship and interior decks of resin-infused composite construction using closed cell foam
- Painted black mask

- Bow deck freshwater washdown

Hardware & Miscellaneous

- **Prop removal/installation tool (upgrade)**
- **Bow deck cushions to convert forward seat to sunpad (upgrade)**
- **Bow seat cushion, C-worthy (upgrade)**
- **Watermaker thru hulls and wiring (upgrade)**
- Wood cabinetry with a satin polyester finish
- African mahogany and wenge trim
- Fabric headliner installed on track system for service access
- Fabric covered hullside(s) and bulkhead(s) installed on track system for service access
- Fixed frameless windows with tinted safety glass
- All interior hardware polished chrome
- Welded and polished stainless-steel anchor chute and roller
- 60-pound plow anchor and deck hawse pipe
- Windlass, RC10 with 25' of acculoy hot dipped galvanized chain and 300' of rope with deck mounted control switches
- Bow thruster, 26 hp electric, with a single 24 volt bank of heavy-duty, (2) 12 volt marine batteries and charger
- (4) polished stainless steel springline cleats with chafing strips, through bolted in aluminum backing plates
- (2) polished stainless-steel bow cleats, through bolted in aluminum backing plates
- Welded and polished stainless-steel rails on bow, side-deck and flybridge, drilled and tapped in aluminum backing plates
- Fog bell
- Horn
- Zincs on rudders and shafts
- Alloy 22 high-strength propeller shafts
- Manganese bronze dripless rudder seals
- Dripless shaft seals
- Portable “drychem” fire extinguishers in compliance with United States Coast Guard and ABYC standards
- Stainless steel trim tabs
- Manganese bronze struts
- Stainless-steel rudders
- Propellers, Nibral high performance
- Sea stairs with dedicated storage brackets
- Walk around side decks
- Stainless steel deck plates for fuel fill, water fill, and waste pump-out
- Engine exhaust exits through hull side near transom
- Anchor locker on bow deck
- Water delivery kit

Engine Compartment & Bilge

- **CAT C-18 1135 engines (upgrade)**
- **Generator exhaust/water separator (upgrade)**
- **Polyurethane painted engine room (upgrade)**
- **Cockpit underwater lights, Seavision (upgrade)**
- **Twin Sea Keeper Gyros, 8000 (upgrade)**
- **Enclosed Gyro cases and fully incorporated (upgrade)**
- Generator, Onan 21kw
- Water manifold with centralized shut-off valve for sinks and showers
- Pultruded fiberglass rudder shelf
- AC fluorescent lights
- DC lights
- DC exhaust blower
- FM200 fixed fire extinguishing system for engine compartment with automatic and remote manual controls, plus audible and visual discharge signals
- Polyethylene water lines
- Freshwater connection
- Dockside water inlet with pressure regulating valve
- 24 volt DC bilge and sump pumps: two at 2000 gph and three at 3700 gph, with heavy-duty float switches and protective guards
- Bronze/chrome ball-valves through-bolted in solid fiberglass on all underwater through hull fittings with electrical bonding throughout
- Pressurized 230 volt AC freshwater pump
- 230 volt AC 20 Gallon electric water heater
- Aluminum fuel tank
- Polyethylene water tank
- Polyethylene sewage holding tank with 24 volt DC sewage pump, plumbed for dockside pump-out with 3/4 full display and alarm as part of systems monitor programmable logic controller
- Fuel filter/water separator, generator
- Sealed shower sump, one each
- Fuel filter/water separator, engines
- Electric fuel priming pumps, engines
- United States Coast Guard approved fuel lines
- 1" stainless-steel steering tie bar with pivoting self-aligning ball joint connection at all cylinder and tie bar connections
- Insulation in salon deck
- Pick-up sea chests
- DC voltmeter in battery panel
- Engine start/stop switches and hour meter

Performance Specifications

RPM	Speed (Knots)	Fuel Cons.(Engines Only)	Range (Nautical Miles)	Hours at Speed
1800	20-22	66	363	17.3
2000	24-26	80	356	14.3
2100	26-28	87	360	13.1
2300	30-32	114	310	10.0

Electrical Systems

- (2) 24 volt banks of heavy-duty, 12 volt marine batteries mounted in fire retardant fiberglass boxes
- Tin-coated wiring with insulation, labeled and color coded
- 240 volt automatic battery charger, 50/60Hz
- Automatic battery paralleling system with switch at control console
- (2) 120/240 volt, 50 amp, shore cord inlets and cords with over-current protection (1 retractable, 1 fixed)
- DC LED lights
- AC duplex outlet(s) with ground fault protection
- Battery control panel with fuses and isolation switches
- DC electronics panel with magnetic circuit breakers
- AC and DC distribution panels with magnetic circuit breakers
- AC switching panel with source selector switches, volt meter, ammeter, frequency meter, generator start/stop controls, and distribution panel selector switches
- Navigation lights
- Ground fault protection on AC receptacles and AC lighting circuits
- Air conditioning, 64,000 BTU, with reverse-cycle heating
- TV antenna, Omni-directional
- Smoke and carbon monoxide detectors

Flybridge & Bridge Deck

- **Flybridge refrigerator/icemaker combo (upgrade)**
- **Flybridge grill with cabinet (upgrade)**
- **Aft deck hatch to flybridge (upgrade)**
- **Flybridge A/C (upgrade)**
- **Hardtop by Pipe Welders (upgrade)**
- **Flybridge table top by Release Marine (upgrade)**
- **Flybridge deck lounge furniture (upgrade)**
- **Flybridge lounge cushions, C-worthy (upgrade)**
- **Custom décor - flybridge helm chair upholstery and exterior throw pillows (upgrade)**
- **Seacrylic 4 sided enclosure (upgrade)**

- **Navigation lights in corners of**
- Systems monitor with programmable logic controller read-out, visual and audible signals for exhaust temperature, alternator, battery voltage, high bilge water, fire warning in engine compartment, fire extinguisher discharge in engine room, AC power loss, smoke detectors, carbon monoxide detectors, and holding tank 3/4 full monitor
- Icom VHF, digital depth and temp
- Welded and polished stainless-steel grab rails and stanchions
- Lounge with cushions and storage underneath
- Framed glass windshield
- Control station with all necessary switches and dimmable lighted instruments
- Painted aluminum radar arch with masthead light and anchor light
- Hardtop with acrylic enclosure
- Compass with dimmable light
- Single-lever clutch and throttle controls (electronic) with emergency back-up and engine synchronization
- Hydraulic power assisted steering
- A/C 32,000 BTU with reverse cycle
- Solid surface teak table
- Refrigerator and icemaker (combination unit)
- Outdoor grill with cabinet
- (1) companion chair
- DC AM/FM stereo receiver with CD player and speakers
- Molded-in stairs to aft deck
- DC low level lights
- Neutral interlock switches allowing engine to start in neutral only
- Fuel level gauge

Aft Deck

- **Bustle gates in lieu of standard gate (upgrade)**
- **Boarding ladder , Tide Ride Sea Stairs with storage bracket (upgrade)**
- **Utility room freezer, 7 cubic ft. chest style (upgrade)**
- **(2) Retractable shore cords (upgrade)**
- **Hand held shower (upgrade)**
- **Teak decking, natural finish (upgrade)**
- **Teak steps to boat deck (upgrade)**
- **Teak steps to swim platform (upgrade)**
- **Table top by Release Marine (upgrade)**
- **(2) deck chairs, Murray Products (upgrade)**
- **Deck cushions, C-worthy (upgrade)**
- **Aft deck hatch to flybridge (upgrade)**
- Molded bench seating with cushions and cover
- Molded fiberglass steps to flybridge

- Molded fiberglass steps with lights to sport deck port and starboard
- Chain gates from aft deck to sport deck steps
- Stainless steel bustle gates
- Refrigerator and icemaker (combination unit)
- Outdoor grill with cabinet
- Amplifier, speakers, and volume control integrate with salon stereo
- AC duplex outlet with ground fault protection
- A/C 32,000 BTU with reverse cycle
- DC lighting in hardtop
- Aft deck hatch to flybridge
- Electrically actuated access hatch to utility and engine compartment
- Freshwater wash down outlet
- Solid-surface teak table

Sport Deck

- **Fully hydraulic swim platform lift for tender (upgrade)**
- **ZAR Formenti Tender, Model ZF-1, with Yamaha 40; 11' x 6'2" beam, seats 5; with cover, fuel water separator, battery switch (upgrade)**
- Freshwater wash down outlet with hose connection
- Molded-in fiberglass steps with DC lights to aft deck
- (2) Pop-up cleats
- Stainless steel re-boarding ladder
- Watertight door to utility room and engine room
- Hand held shower

Galley

- **Oven, wine cooler, upright dishwasher and icemaker (upgrade)**
- **Appliance fronts constructed of matching wood (upgrade)**
- **Custom décor - faucet; blind pocket at aft salon door finished wood; countertops (upgrade)**
- **Dinette table top with Macassar Ebony high gloss wood by Release Marine (upgrade)**
- **Hullsiding by Whisper Wall (upgrade)**
- Bella Cera Dark Walnut flooring
- Dinette table, storage underneath with stainless steel pedestal
- Pantograph door with lock, starboard, to side deck
- "Titanium" stone countertops with undermount sink
- Storage cabinets made of finished wood
- (2) AC under counter refrigerator and freezer drawer units
- Garbage disposal

Salon

- **Custom décor - interior wood Walnut finish, flush fill with Wenge moldings on tops (upgrade)**
- **Sound down salon flooring (upgrade)**
- **Salon cocktail table by Release Marine (upgrade)**
- **Hullsiding by Whisper Wall (upgrade)**
- Salon/dinette throw pillows
- Inlaid carpeting with synthetic wood-style floor
- Flooring installed with sound down material
- Privacy blinds
- Welded and polished stainless-steel sliding door to aft deck
- 37" class TV
- BOSE Lifestyle home theater system with AM/FM, iPod Dock, and surround sound speakers
- Blu-ray disc player
- Sofa with storage and throw pillows
- End table
- HVAC control

Companionway

- **Washer and dryer (upgrade)**
- **Bulkheads and stairwell by Whisper Wall (upgrade)**
- Carpeting
- Flush panel doors with door stops to staterooms and head(s)
- Lighted stairway to galley
- Storage cabinets outboard

Master Stateroom

- King system 4 mattress with berth keeper, berth base, headboard, throw pillows, vanity stool **(upgrade)**
- Custom décor - bunk cover, pillow shams, sheets **(upgrade)**
- Mirrors **(upgrade)**
- Lamps **(upgrade)**
- Bedside lamps **(upgrade)**
- Wood A/C return grill **(upgrade)**
- Twin cedar-lined wardrobes with doors and automatic lights
- Fabric headliner installed on track system for service areas
- Fabric covered hull side(s) and bulkhead(s) installed on track system for service access
- Nightstands with drawers

- Dresser with drawers, port and starboard
- Carpeting
- 32" LCD TV
- BOSE 3-2-1 GS with AM/FM and DVD/CD with speakers
- Blu-ray disc player
- Full length mirror
- Private access to master head
- DC LED lighting
- DC low voltage lights under berth
- AC duplex outlets with ground fault protection
- Smoke detector
- Carbon monoxide detector
- Privacy blinds
- HVAC control
- Portlights, port and starboard
- Vanity

Master Head

- **Plexi mirrored ceiling (upgrade)**
- **Custom décor - faucets, towel bars, tissue holder, towel ring, robe hooks, passageway and privacy door hardware, sink, showerhead, shower tile, countertop, shower enclosure, shower seat top (upgrade)**
- **Custom wallcovering (upgrade)**
- Bella Cera Dark Walnut flooring
- Marble countertop "Autumn Ashes", backsplash, with vessel sink
- Hardwood baseboards
- Tile shower, "Autumn Ashes", with frameless glass doors
- Storage cabinet with mirror above sink
- Base cabinet with storage
- Freshwater toilet
- Recirculating fan
- Plexi-mirror around upper cabinet
- Holding tank 3/4 full indicator light

Bow Guest Stateroom

- **Custom décor - bunk cover, pillow shams, berth keeper, berth base, headboard, throw pillows (upgrade)**
- **20" LCD TV with DVD stereo (upgrade)**
- Carpeting
- Queen-sized tapered berth with cedar-lined storage underneath

- Upholstered berth base
- HMC mattress with mattress pad and sheets
- Cedar-lined hanging/storage locker with automatic light
- Nightstands, port and starboard
- DC AM/FM stereo receiver with CD player and speakers
- Full length mirror
- Private access to head
- HVAC control
- Screened overhead hatch with privacy cover

Port Guest Stateroom

- **Custom décor - bunk covers, pillow shams, throw pillows, berth keepers, berth bases (upgrade)**
- **Portlight with window treatment (upgrade)**
- Carpeting
- Criss/cross berths with storage under lower berth
- HMC mattress, mattress pad and sheets
- Cedar-lined hanging/storage locker with automatic light
- 22" class TV
- DC AM/FM stereo receiver with CD player and speakers
- Full length mirror
- HVAC control

Guest Head

- **Custom décor - faucet, towel bar, tissue holder, towel ring, robe hooks, privacy door hardware, showerhead, countertops (upgrade)**
- Bella Cera Dark Walnut flooring
- Marble countertop w/ full backsplash, "Autumn Ashes"
- Hardwood baseboards
- Stall shower with door and automatic sump pump
- Storage cabinet with mirror
- Base cabinet with storage
- Freshwater toilet
- Recirculating fan
- Holding tank 3/4 full indicator lights

Storage/Utility Room

- Ladder from aft deck

- Door to engine room
- Watertight door from sport deck

Navigation

- (2) Garmin GPSMap 8215 15" Touchscreen MFD
- (1) Garmin GMR604XHD 6 KW Marine Radar with 4' Open Array
- (1) Garmin AIS 600
- (1) Garmin GMS10 Network Port Expander
- (3) Garmin 20' Network Cable
- (2) Garmin 6' Network Cable
- (1) Hatteras Breaker Panel, 12 Volt
- (1) Orion 24/12 Volt Converter 70AMP
- (1) Hatteras 54' to 64' Standard Package Gear; ICOM 604 VHF/Antenna/Rupp Mount; Furuno RD33 Digital Depth/Xducer
- (1) GarminGHP20 with Smartpump Pilot System
- (1) Garmin GRF10 Rudder Feed Back
- (1) Hoses and Fittings for Hatteras AP
- (1) GPIRB – ACR: 2846 Globalfix Ipro CAT 1 EPIRB
- (1) KVH Tracvision HD7 Tri-America SAT TV System
- (1) KVH Tracvision HD7 Empty Dome/Baseplate
- (2) Scanstrut SC65-NAR Mount for Arch
- (4) KVH H25 HDTV DirecTV Receiver for HD7 and HD11 Only – US Service
- (4) Xantech IRDY4KIT IR System
- (5) Niles MS220B IR Sensor Surface Mount
- (1) APC 420 Smart UPS
- (2) HST 2-Way High Frequency Splitter

Исключения

При продаже яхты исключаются личные вещи владельца.

Отказ от ответственности

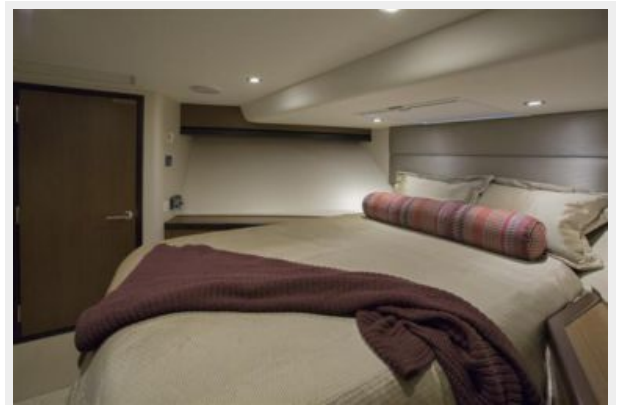
Компания предоставляет описание судна или яхты добросовестно, но не может гарантировать точность этой информации, а также не ручается за техническое состояние. Покупатель должен проинструктировать своих агентов или оценщиков исследовать представленную информацию более подробно, по собственному желанию. Продажа судна или яхты, изменение цены или снятие с продажи будет происходить без предварительного уведомления.

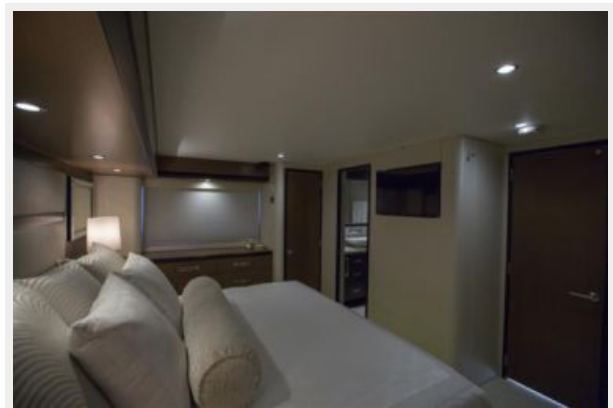
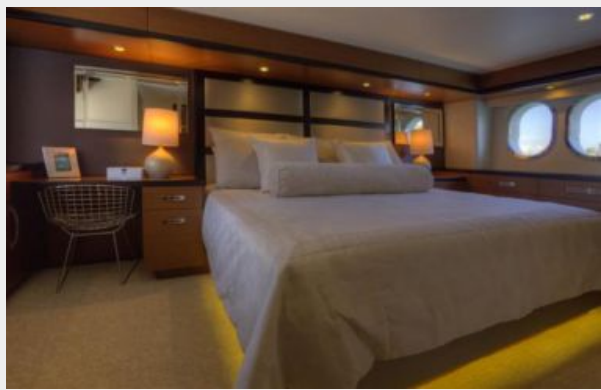
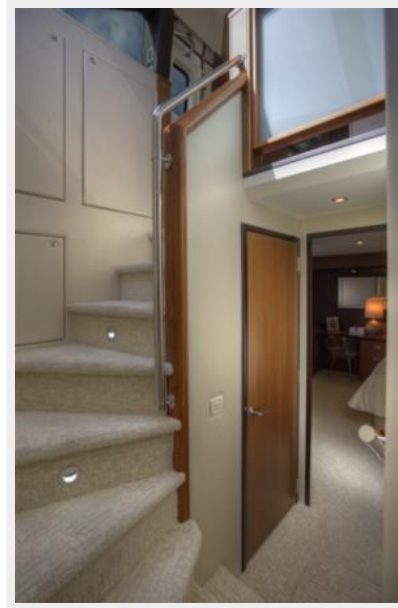
ФОТОГРАФИИ



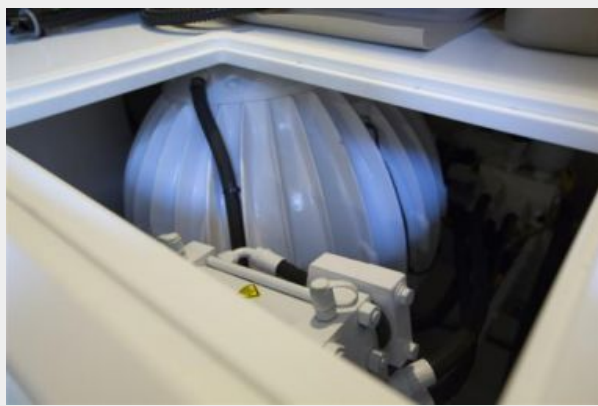
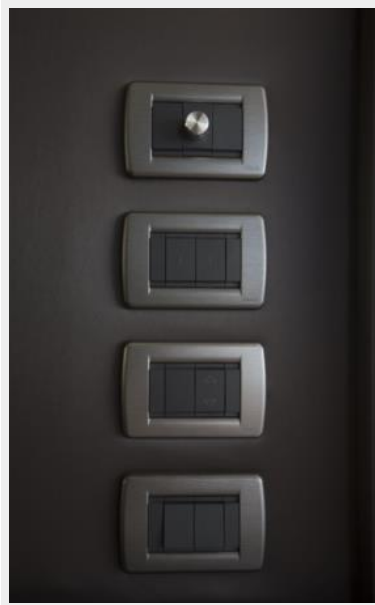




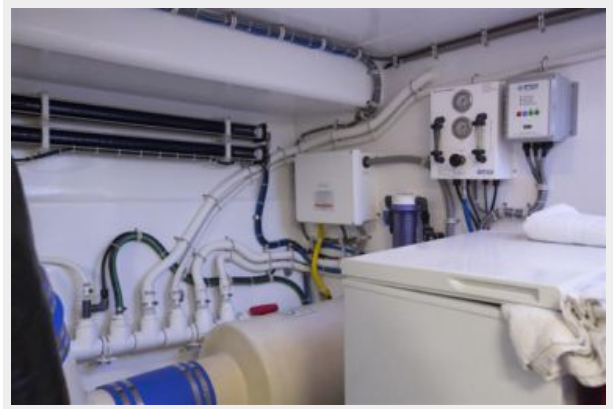












КОНТАКТЫ

Андрей Шестаков (Andrey Shestakov) – ведущий яхтенный брокер отдела продаж яхт и судов компании Shestakov Yacht Sales Inc. Официальный представитель Shestakov Yacht Sales Inc. для русскоговорящих клиентов в центральном офисе компании в Майами/Форт Лодердейл/Флорида/США.

Контактная информация

Email: andrey@shestakovyachtsales.com

Web: shestakovyachtsales.com

Телефоны

Краснодарский край: **+7(918)465-66-44**

США, Майами, Флорида: **+1(954)274-4435**

Время работы

Понедельник – Суббота: **9:00 - 21:00**
EDT

Воскресенье: **Закрето**

Адрес



Harbour Towne Marina, 850 NE 3rd St,
STE 213, Dania, FL 33004