

FISH CAMP — OCEAN YACHTS



Builder: [Ocean Yachts](#)

Year Built: 2003

Model: Sport Fisherman

Price: PRICE ON APPLICATION

Location: United States

LOA: 57' 0" (17.37m)

Beam: 16' 10" (5.13m)

Cruise Speed: 28 Kts. (32 MPH)

Max Speed: 32 Kts. (37 MPH)

Our experienced yacht broker, Andrey Shestakov, will help you choose and buy a yacht that best suits your needs **Fish Camp — Ocean Yachts** from our catalogue. Presently, at Shestakov Yacht Sales Inc., we have a wide variety of yachts available on our sale's list. We also work in close contact with all the big yacht manufacturers from all over the world.

If you would like to buy a yacht **Fish Camp — Ocean Yachts** or would like help answering any questions concerning purchasing, selling or chartering a yacht, please call **+1(954)274-4435**

TABLE OF CONTENTS

TABLE OF CONTENTS	2
SPECIFICATIONS	4
Overview	4
Basic Information	4
Dimensions	4
Speed, Capacities and Weight	4
Accommodations	5
Hull and Deck Information	5
Engine Information	5
DETAILED INFORMATION	6
Accommodations	6
Salon	6
Galley/Laundry	7
Master Stateroom	7
VIP Stateroom	8
Master & Guest Heads	8
Crew Quarters	9
Deck & Hull	9
Fly Bridge	11
Electrical Equipment	12
Electronics & Navigation	12
Engine & Mechanical	13
Cockpit	14
Fishing Equipment	14
Broker Comments	15
Exclusions	16
Disclaimer	16
PHOTOS	17

CONTACTS	30
Contact details	30
Telephones	30
Office hours	30
Address	30

SPECIFICATIONS

Overview

"Fish Camp" is extremely well maintained vessel with the preferred C-18 Caterpillar 1025 HP engines.

Some recent upgrades include:

- New Garmin 7212 Electronics - 2015
- Garmin Chirp Sounder - 2014
- Eskimo Icemaker - 2012
- Watermaker makes 800 gal per day - 2014
- All new interspring mattresses - 2011

The owner has found his new boat and needs to move "Fish Camp".

Basic Information

Category: Sport Fisherman

Sub Category: Convertible

Model Year: 2003

Year Built: 2003

Country: United States

Dimensions

LOA: 57' 0" (17.37m)

Beam: 16' 10" (5.13m)

Speed, Capacities and Weight

Cruise Speed: 28 Kts. (32 MPH)

Max Speed: 32 Kts. (37 MPH)

Displacement: 66269 Pounds

Water Capacity: 220 Gallons

Fuel Capacity: 872 Gallons

Accommodations

Total Cabins: 3

Hull and Deck Information

Hull Material: Fiberglass

Engine Information

Engines: 2

Manufacturer: Caterpillar

Model: C-18

Engine Type: Inboard

Fuel Type: Diesel

DETAILED INFORMATION

Accommodations

Couch with rod storage,
Amtico teak and holly flooring in galley and heads,
Amtico flooring at salon entrance,
Canvas rug runner,
Steps and companionway runner,
Trash Compactor,
Designer interior,
Accessory package.

Salon

Aluminum/sliding door with security lock,
Teak paneled bulkheads,
Carpeting,
Canvas rug runner,
Designer chair,
Designer sofa with rod storage,
Coffee table with storage,
Recessed 40" LCD Flatscreen TV with remote,
European push button hardware,
Custom decor selection,
Silhouette blinds with upholstered panel,
Bose Lifestyle 38 stereo with CD/DVD,
Central vacuuming system,

Zoned air conditioning with reverse cycle heating,
Tinted safety glass,
24V and 110V lighting.

Galley/Laundry

Teak flooring,
Sub zero Undercounter drawer Refrig & Freezer (4)
Convection/microwave oven,
Water tank level gauge,
Corian counters and sink top,
Trash compactor,
Recessed Range 3 burner, 220V,
Duplex electrical outlets,
Spacious drawers and cabinets,
Icemaker,
Dinette with hi-gloss top

Master Stateroom

Large berth with drawer storage,
Carpeting,
Innerspring mattress - New 2011
Bedsread and shams (2),
Pillows (2),
24V and 110V fixtures and receptacles,
Mirror,
Nightstands (2),

Headliner,

Drawers for clothes storage,

Overhead cabinets and hanging lockers,

Bose SA-3 stereo system (master only),

Stereo speakers,

Air conditioning/heat controls,

26" TV with remote,

Teak raised panel entrance door,

Dimmer switches,

Private head access,

Vanity with mirror and stool (master only).

VIP Stateroom

Large berth

Cabinetry

Large spring mattress - 2011

Shams / Pillows

Headliner

Nightstands (2)

Stereo System

Air Conditioning controls

26" TV/DVD

Dimmer switch

Private Head access

Master & Guest Heads

Teak flooring,
Custom wall covering,
Corian countertop,
Stall showers with door, automatic sump pump and light,
Medicine cabinet with mirror,
Linen storage,
Towel bars,
Vacu Flush toilet,
Exhaust blower,
Lights 24V and 120V,
Duplex outlets - 120V,
Ventilating hatch (Guest only),
Teak raised panel entrance door.

Crew Quarters

Twin berths with berth covers and drawer storage, Inner spring mattresses - New 2011
15" TV/DVD Player
Shams and pillows (2),
Carpeting,
Headliner,
Teak raised panel entrance door,
Overhead cabinets,
Hanging locker,
Dimmer switches.

Deck & Hull

Fiberglass Bow pulpit,

Under water Tri-colored lights (5)

Bow washdown - freshwater,

Side window rails (2), white Handrails- aluminum,

Docklines, 35' nylon (6),

Cleats, (2) stern, (2) bow and (2) springline,

Hawse pipes,

Forward deck hatch,

Fenders (2), 28" x 8 1/2",

Tinted safety glass,

Canvas step pad,

Anchor, S-2000 Danforth,

Anchor chain

Anchor line, 300' x 9/16",

Fog bell,

Deluxe electric air horns,

Fire extinguishers 2 1/2 lb. portable (3), 5 lb. (1) Fire and smoke detector,

First aid kit,

Life jackets Type 1 (6) and 20" ring buoy (1),

Olin flare kit,

Aluminum bow rail,

Aluminum bridge rail with ladder,

VHF radio with antenna,

Autohelm Tri-data System for speed, depth and water temperature,

Compass - flush mount,

Fuel shutoff valves -quick action ball type,

Seacocks, quick action ball type all through-hull fittings below waterline,
Bilge pumps, automatic (4),
Power steering,
Electronic controls,
Fuel gauges,
Engine alarm system for water temperature, oil pressure and high bilge water,
Full Stamoid cockpit cover w/ poles to use as Sunshade while anchored
Emergency bilge valves,
Anchor Windlass,

Fly Bridge

Hatch in hardtop,
Freezer,
EZ2CY(clearview) 3-sided enclosure,
Flush mount radio box for hardtop,
Flush mount radio/teaser reel box for hardtop,
Upper vents in enclosure,
Hardtop with 3-sided enclosure,
All wiring with circuit breakers for electronics,
U-shaped lounge seating forward of console with pleated vinyl-covered polyfoam cushions and rod storage,
Chart light,
Duplex electrical outlet 120V,
Rocket launchers (12), aft rail
"Release" helm and companion chairs.

Electrical Equipment

Generator, 15 KW water cooled with 2000 hours,

Heavy duty batteries, two banks, with automatic battery charger,

Battery parallel system,

Shoreline- 220V-50A with automatic cord reels Glenndinning,

Dyna plate ground system,

Electrical outlets, 120V duplex,

Electrical control and distribution panels, with circuit breakers, voltmeters and battery condition indicator,

Engine synchronizer,

Zoned air conditioning with reverse cycle heating,

Zinc anodes,

Navigation lights,

Cockpit courtesy lighting,

24V & 110V fixtures/receptacles,

Overhead lights,

Reading bunk lights,

Closet lights,

Engine room lights,

Circuit breakers throughout,

Back lighting on electrical center,

Panel and flybridge instruments

Electronics & Navigation

Auto Pilot: Simrad AP25,

Compass: Danforth,

Garmin 7212 (2) - New Sept 2015

SAT TV

Glenndinning controls

Alpine CD/Player with XM,

Garmin VHF/ICOM VHF

Raymarine tridata ST60,

Simrad - 68 mile radar

Jabsco Par spotlight (remote)

Garmin Chirp Sounder - 2014

Eskimo Icemaker - 2012

900 GPO Watermaker.-2014

Engine & Mechanical

Fully sound and heat insulated engine room,

Awlgrip engine room,

Twin C-18 Caterpillar diesel fresh water cooled engines,

Fuel filters main engines & generator

External sea strainers - large wedge type,

Automatic fire extinguisher system,

Fiberglass mufflers,

Fresh water spigot,

Blowers,

Nibral Propellers (2),

Aquamet 22 Shafts(2),

Bronze rudders,

Bronze Struts with bearings,

Trim tabs,
Electric oil exchange system,
Coolant recovery bottles - engines and generator,
Electrical outlet.

Cockpit

Fighting Chair 130LB Release class
Rod Locker
Refrigerated fish box
Cockpit Freezer
Freshwater washdown
Raw water washdown
Live well
Tuna tubes (2) - Custom made for the livewell
Rupp Out riggers
Cockpit Camera
6 Wing Rod holders
4 Gunnel Rod holders
2 Large In-deck Fish boxes
Flatline Cups
Courtesy lighting
Large tackle storage station
Bait prep counter w/ sink

Fishing Equipment

Gunnel Rod holders (4),

Cockpit side lockers,
Boarding step box,
Tackle locker,
Transom gate and hinged stern door,
Door to engine room,
Seawater and freshwater washdowns,
Bait center with freezer, sink and fresh water spigot,
Transom live well with Tuna Tube insert,
Hatch dunnage box,
Stereo speakers,
Lazarette access,
Release Fighting Chair,
Rupp Outriggers,
(1) Insulated fishbox with pumpout,
(1) Refrigerated fishbox with pumpout,
Underwater lights,
Camera system in engine room,
Cockpit recordable camera for tagging fish.

Broker Comments

Fish Camp is extremely well maintained vessel with the preferred C-18 Caterpillar 1025 HP engines.

Some recent upgrades include:

- New Garmin 7212 Electronics - 2015
- Garmin Chirp Sounder - 2014
- Eskimo Ice maker - 2012

- Watermaker makes 800 gal per day - 2014
- All new interspring mattresses - 2011

The owner has found his new boat and needs to move "Fish Camp".

Exclusions

Owner's personal belongings.

Disclaimer

The Company offers the details of this vessel or yacht in good faith but cannot guarantee or warrant the accuracy of this information nor warrant the condition of the vessel. A buyer should instruct his representatives, agents, or his surveyors, to investigate such details as the buyer desires validated. This vessel or yacht is offered subject to prior sale, price change, or withdrawal without notice.

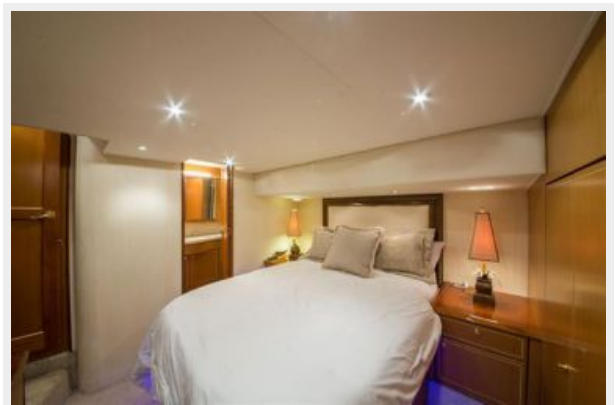
PHOTOS



























CONTACTS

Andrey Shestakov, leading yacht broker of the sales department of Shestakov Yacht Sales Inc. Shestakov Yacht Sales Inc., the official representative of the Miami/Fort Lauderdale FL headquarters.

Contact details

Email: andrey@shestakovyachtsales.com

Web: shestakovyachtsales.com/en/

Telephones

USA: +1(954)274-4435

Office hours

Monday – Saturday: **9:00 - 21:00** EDT

Sunday: **closed**

Address



Harbour Towne Marina, 850 NE 3rd St,
STE 213, Dania, FL 33004